

Multi-Bypass

PARTS LIST

Multi-Bypass

NOTE

1. Indicate parts number and machine model when placing an order.

eg.	Parts Number	Parts Name	Machine Model	Cycle	Quantity
	3A206440	MOUNT BASE,BYPASS	Multi-Bypass	60Hz	1

2. Service calls and freight will be charged separately.

3. Symbols in the "Parts Number" column.

- Parts with "•" are component parts or sub-assemblies of the assembly appearing immediately above them.

eg.	Parts Number	Parts Name	Parts Number	Parts Name
	3A227230	WIRE,BYPASS UNIT	•J0441160	RECEPTACLE,DF11-16DS-2C(HIROSE)
			•J0450030	PLUG,DF3-3S-2C(HIROSE)

- Parts with "⊙" indicates the service parts.

4. See the last page of this parts list for the classification of the screws in the illustrations.

Parts List

Multi-Bypass

———— CONTENTS ————

FIG.1	BYPASS UNIT I	2
FIG.2	BYPASS UNIT II	4
FIG.3	PACKAGING	6
	• INDEX	8

FIG. 1 BYPASS UNIT I

3A2-1

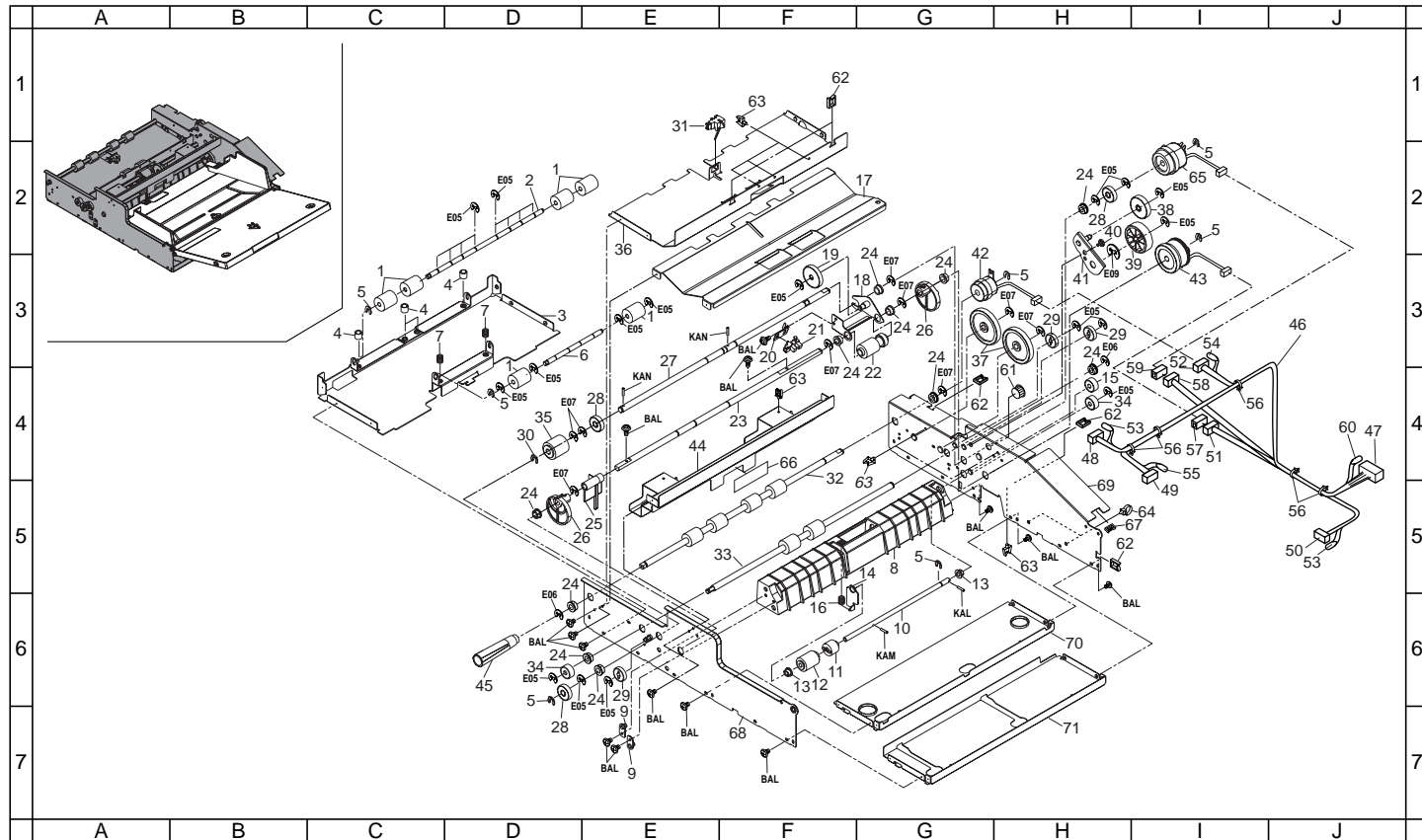


FIG. 1 BYPASS UNIT I

SP	Ref. No.	Part. No.	Description	Quantity USA(120V)
●	1	33906660	RIGHT PULLEY,FEED	6
	2	3A206430	SHAFT 2,BYPASS FEED	1
	3	3A206440	MOUNT BASE,BYPASS	1
●	4	3A206410	SPRING,BYPASS FEED	4
	5	34806150	STOPPER 5	7
	6	3A206300	SHAFT,BYPASS FEED	1
●	7	66106610	SPRING,FEED	2
	8	3A206050	LOWER GUIDE,BYPASS UNIT	1
	9	34922430	PIN,SCANNER RETAINING	2
	10	3A206240	SHAFT,RETARD	1
●	11	33906430	TORQUE LIMITER,BYPASS	1
●	12	2AR07230	PULLEY,SEPARATION	1
●	13	73210450	BUSH, 6	2
	14	3A206170	HOLDER,RETARD	1
●	15	72306440	GEAR 16,BYPASS,GRAY	1
●	16	3A206310	SPRING,RETARD	1
	17	3A206280	LOWER GUIDE,BYPASS	1
	18	3A206130	JOINT,BYPASS PICKUP	1
●	19	72321350	GEAR 30, FD EJECT IDLE	1
	20	3A206210	MOUNT,BYPASS PE SWITCH	1
●	21	35327400	SWITCH,FEED	1
●	22	2AR07240	PULLEY,LEADING FEED	1
	23	3A206230	SHAFT,BYPASS CAM	1
●	24	67322230	BUSHING 8	11
	25	3A206100	ARM,BYPASS PE	1
●	26	3A206110	CAM,BYPASS	2
	27	3A206221	SHAFT,BYPASS	1
●	28	45729416	GEAR,TONER ROLLER	3
●	29	18506140	LOWER GEAR 18,REGISTRATION	3
	30	34806480	STOPPER 6	1
●	31	68727040	SWITCH,DUPLEX PE	1
●	32	3A206090	ROLLER,BYPASS FEED	1
●	33	3A206400	ROLLER 2,BYPASS FEED	1
●	34	33906160	GEAR 16,PAPER FEED	2
●	35	61706770	UPPER PULLEY,BYPASS	1
	36	3A206270	UPPER GUIDE,BYPASS	1
●	37	45727505	GEAR 50T	2
●	38	75914571	GEAR 30,DEVELOPING UNIT DRIVE	1
●	39	3A206200	GEAR 39/18	1
	40	72918050	PIN,BLADE ARM	1

- Parts with "*" are component parts or sub-assemblies of the assembly appearing immediately above them.
- Parts with "●" indicates the service parts.

3A2-1

SP	Ref. No.	Part. No.	Description	Quantity USA(120V)
	41	3A206190	JOINT,BYPASS	1
●	42	36593270	PARTS CLUTCH H FEED(SP)	1
●	43	3A206120	CLUTCH,BYPASS CAM	1
●	44	3A206060	COVER,BYPASS PICKUP	1
	45	3A206180	DIAL,BYPASS FEED	1
	46	3A227230	WIRE,BYPASS UNIT	1
	47	•J0441160	RECEPTACLE,DF11-16DS-2C(HIROSE)	1
	48	•J0450030	PLUG,DF3-3S-2C(HIROSE)	1
	49	•J0150030	RECEPTACLE,175778-3(AMP)	1
	50	•J0450050	PLUG,DF3-5S-2C(HIROSE)	1
	51	•J5003020	RECEPTACLE,PHNR-02C-H(JST)	1
	52	•J0453030	PLUG,DF3-3EP-2C(HIROSE)	1
	53	•J0450900	SOCKET,DF3-2428SC(HIROSE)	7
	54	•J0452900	PIN,DF3-EP2428PC(HIROSE)	2
	55	•J0150900	CONTACTOR,175161-1(AMP)	3
	56	•M2607010	BINDING BAND,PLT1M	5
	57	•J5016020	CASE,BU02P-TR-PC-H(JST)	1
	58	•J5003030	RECEPTACLE,PHNR-03C-H(JST)	1
	59	•J5016030	CASE,BU03P-TR-PC-H(JST)	1
	60	•J0441900	CONTACTOR,DF11-2428SC	16
●	61	M1203200	OPEN BUSHING,OCB-375	1
●	62	M2104350	EDGING,EDS-0607M(KITAGAWA)	5
●	63	M2105740	MINIATURE CLAMP,UAMS-05S-2	6
●	64	M2107200	BAND,SG-110 V0(KITAGAWA)	2
●	65	2AC06230	CLUTCH,RESISTRATION	1
●	66	3A205010	LABEL,CAUTION GEAR	1
●	67	M2104210	EDGING,EDS-2	1
	68	3A206320	FRONT FRAME,BYPASS UNIT	1
	69	3A206330	REAR FRAME,BYPASS UNIT	1
	70	3A206340	STAY,BYPASS UNIT	1
	71	3A206450	STAY 2,BYPASS UNIT	1

FIG. 2 BYPASS UNIT II

3A2-1

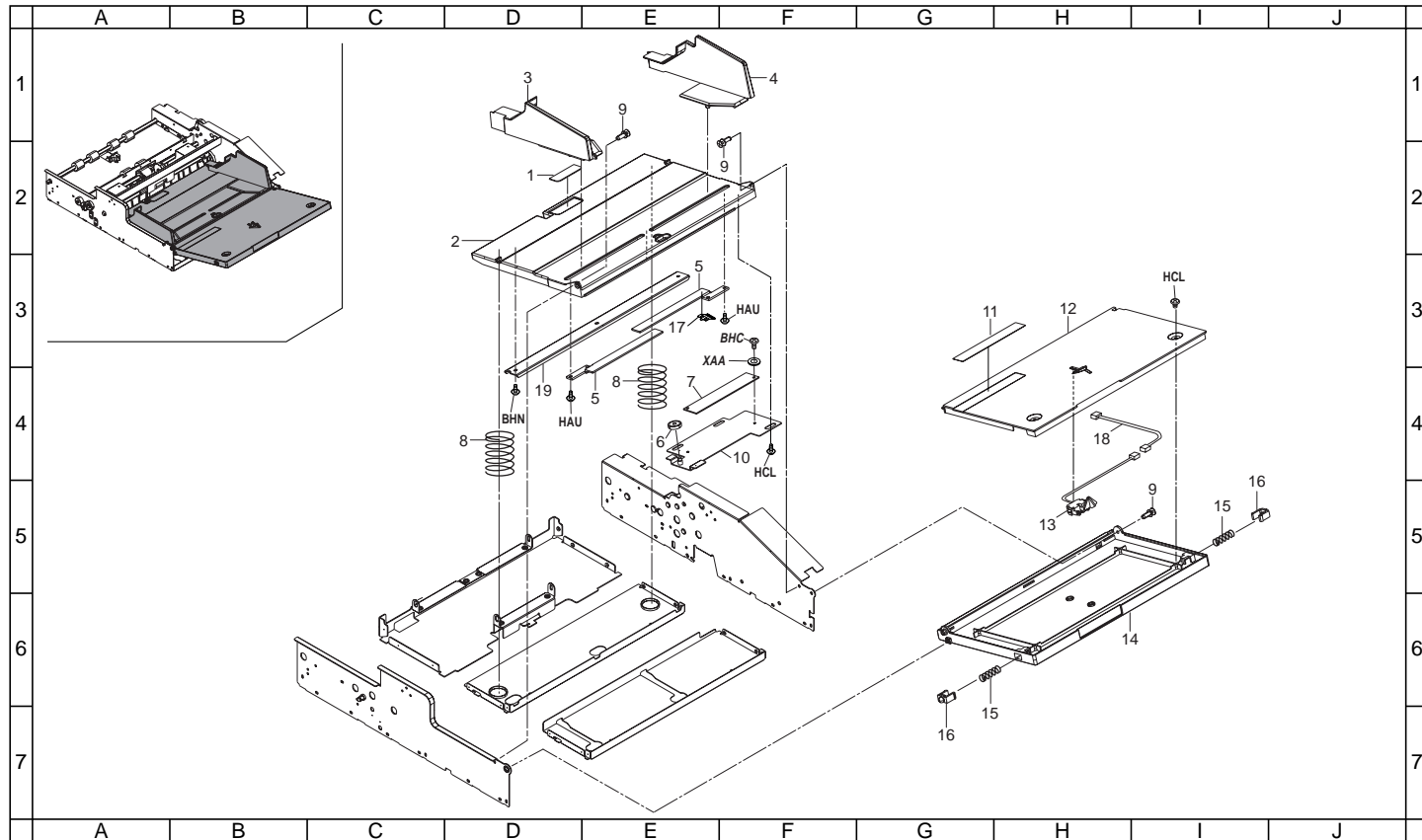


FIG. 2 BYPASS UNIT II

SP	Ref. No.	Part. No.	Description	Quantity USA(120V)
●	1	34806490	FRICITION PLATE,BYPASS LEADING FEED	1
	2	3A206080	LIFT PLATE,BYPASS	1
	3	3A206150	FRONT CURSOR,BYPASS	1
	4	3A206160	REAR CURSOR,BYPASS	1
	5	33907100	RACK,CASSETTE	2
●	6	65914120	GEAR 18,IDLE DEVELOPING	1
●	7	33928111	SIZE DETECTION PCB	1
●	8	34907380	SPRING,CASSETTE	2
	9	66007310	PIN,CASSETTE WORK PLATE	3
	10	3A206461	MOUNT,BYPASS PCB	1
●	11	18505180	ORIGINAL SIZE INDICATOR,BYPASS (INCH)	1
●	12	3A206290	TABLE,BYPASS	1
●	13	33906990	SWITCH,BYPASS SIZE DETECTION	1
●	14	3A206260	COVER,BYPASS TRAY	1
●	15	63516110	SPRING,TRANSFER	2
	16	33906880	STOPPER,BYPASS TABLE	2
	17	33907110	TERMINAL,PAPER SIZE PCB	1
	18	3A227320	WIRE,BYPASS TRAY	1
	19	3A206360	STAY,LIFT PLATE	1

- Parts with "*" are component parts or sub-assemblies of the assembly appearing immediately above them.
- Parts with "●" indicates the service parts.

FIG. 3 PACKAGING

3A2-1

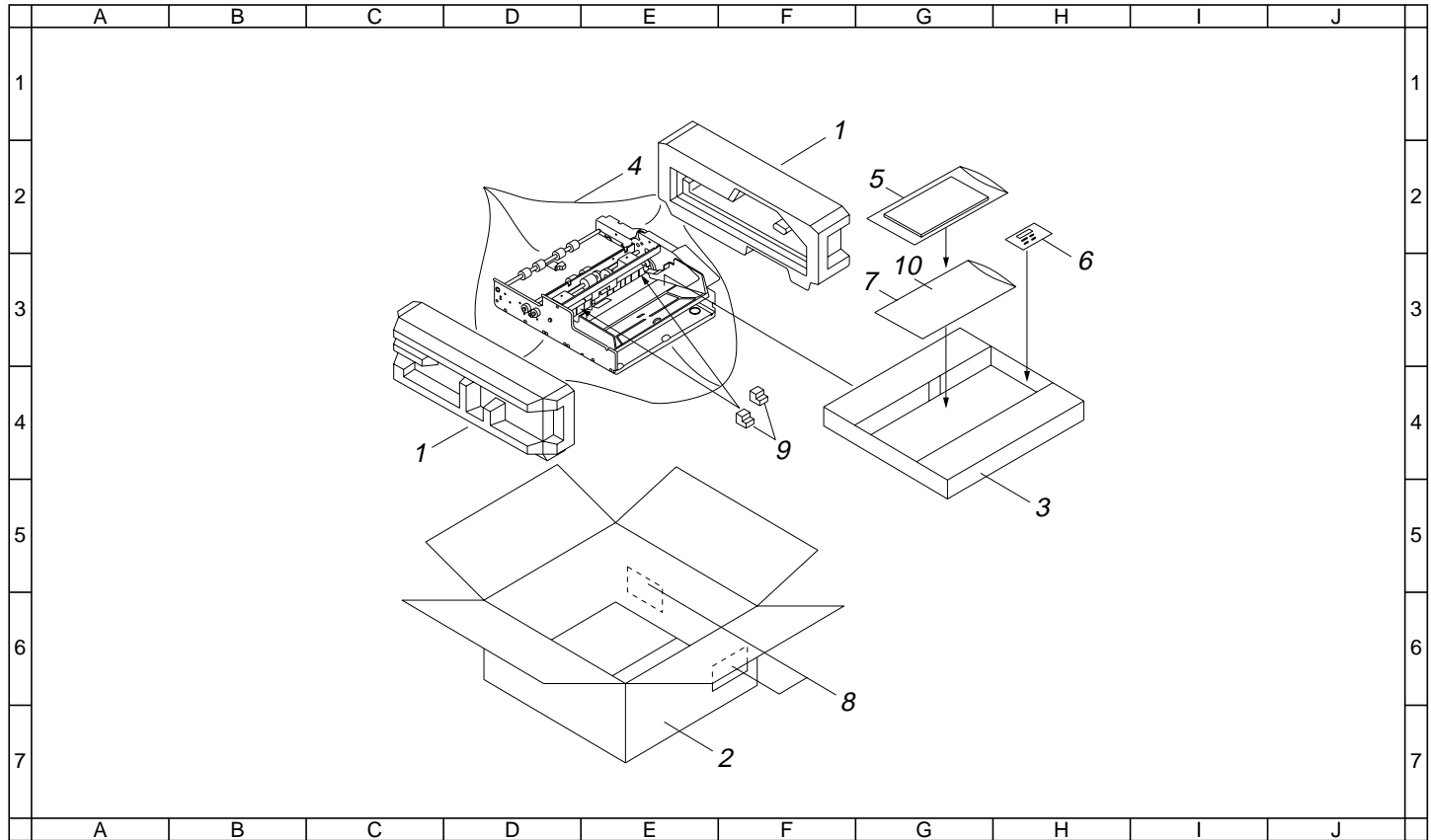


FIG. 3 PACKAGING

SP	Ref. No.	Part. No.	Description	Quantity USA(120V)
	1	3A278010	PAD	1
	2	3A278020	OUTER CASE	1
	3	3A278030	ACCESSORY RECEIVER	1
	4	75278090	POLYETHYLENE SHEET	1
	5	74378210	AIR CAP (380X380)	1
	6	PKP02120	VINYL BAG 70X110	1
	7	713P1110	POLYETHYLENE BAG FOR INSTALLATION PROCEDURE	1
	8	77778900	LABEL BAR CODE	2
	9	3A278040	SPACER	2
	10	3A280010	INSTALLATION PROCEDURE	1

- Parts with "*" are component parts or sub-assemblies of the assembly appearing immediately above them.
- Parts with "⊙" indicates the service parts.

CLASSIFICATION OF THE SCREWS IN ILLUSTRATION

<u>REF.</u>	<u>ITEM #</u>	<u>DESCRIPTION</u>
BAL	B1003050	BINDING SCREW CVM3X5
<i>BHC</i>	<i>B3024060</i>	<i>BINDING TAP-TIGHT SCREW M4X6</i>
BHN	B8013080	BINDING TAP-TIGHT SCREW M3X08
E05	D1000500	STOP RING (E-5)
E06	D1000600	STOP RING (E-6)
E07	D1000700	STOP RING (E-7)
E09	D1000900	STOP RING (E-9)
HAU	B4043080	TRIPLE TAP-TITE P SCREW M3X08
HCL	B4103060	TRIPLE SCREW M3X06(CHROMIUM)
KAL	E0020100	SPRING PIN 2X10
KAM	E0020120	SPRING PIN 2X12
KAN	E0020140	SPRING PIN 2X14
XAA	<i>C2804100</i>	<i>POLYESTER SLIDER WASHER 4.1X10X0.5T</i>

MITA COPYSTAR AMERICA, INC.

Headquarters:

225 Sand Road, P.O. Box 40008
Fairfield, New Jersey 07004-0008
TEL : (973) 808-8444
FAX : (973) 882-6000

New York Show Room:

149 West 51st street,
New York, NY 10019
TEL : (212) 554-2679
FAX : (212) 554-2625

Northeastern Region:

225 Sand Road, P.O. Box 40008
Fairfield, New Jersey 07004-0008
TEL : (973) 808-8444
FAX : (973) 882-4401

Midwestern Region:

225 Spring Lake Drive,
Itasca, Illinois 60143
TEL : (630) 250-7447
FAX : (630) 250-8787

Western Region:

14101 Alton Parkway,
P.O.Box 57006,Irvine,
California 92618-7006
TEL : (949) 457-9000
FAX : (949) 457-9119

Southeastern Region:

1500 Oakbrook Drive,
Norcross, Georgia 30093
TEL : (770) 729-9786
FAX : (770) 729-9873

Southwestern Region:

2825 West Story Road,
Irving, Texas 75038-5299
TEL : (972) 550-8987
FAX : (972) 570-4704

Dallas Parts Distribution Center & National Training Center:

2825 West Story Road,
Irving, Texas 75038-5299
TEL : (972) 659-0055
FAX : (972) 570-5816

MITA COPYSTAR CANADA, LTD.

6120 Kestrel Road,
Mississauga, Ontario L5T 1S8
TEL : (905) 670-4425
FAX : (905) 670-8116

MITA COPYSTER SOUTH AMERICA S.A.

Av. Mitre 1345 Florida (1602)
Pcia, Buenos Aires,Argentina
TEL : (54) 11-4730-1070
FAX : (54) 11-4760-2071

MITA COPYSTAR MEXICO, S.A. DE C.V.

Av. 16 de Septiembre #407
Col. Santa Inés,
Delegación Azcapotzalco
México, D.F. C.P. 02130
TEL : 3-83-27-41
FAX : 3-83-78-04

© 1999 MITA INDUSTRIAL CO., LTD.

MITA and *mita* are registered trademarks of MITA INDUSTRIAL CO., LTD.

Printed in U.S.A.