



# Parts List

*ST-2500*  
*PF-620*

## NOTE

1. Indicate parts number and machine model when placing an order.

eg.	Parts Number	Parts Name	Machine Model	Cycle	Quantity
	5GD20020	RIGHT COVER	ST-2500	60Hz	1

2. Service calls and freight will be charged separately.

3. Symbols in the "Parts Number" column.

- Parts with "●" indicates the spare parts and the parts without "●" can not be supplied.

4. See the last page of this parts list for the classification of the screws in the illustrations.

———— CONTENTS ————

FIG. 1 HOUSING .....	2
FIG. 2 PAPER TAKE-UP SECTION (A) .....	4
FIG. 3 PAPER TAKE-UP SECTION (B) .....	6
FIG. 4 DRIVE SECTION .....	8
FIG. 5 PAPER TRAY UNIT (A).....	10
FIG. 6 PAPER TRAY UNIT (B).....	12
• INDEX.....	14

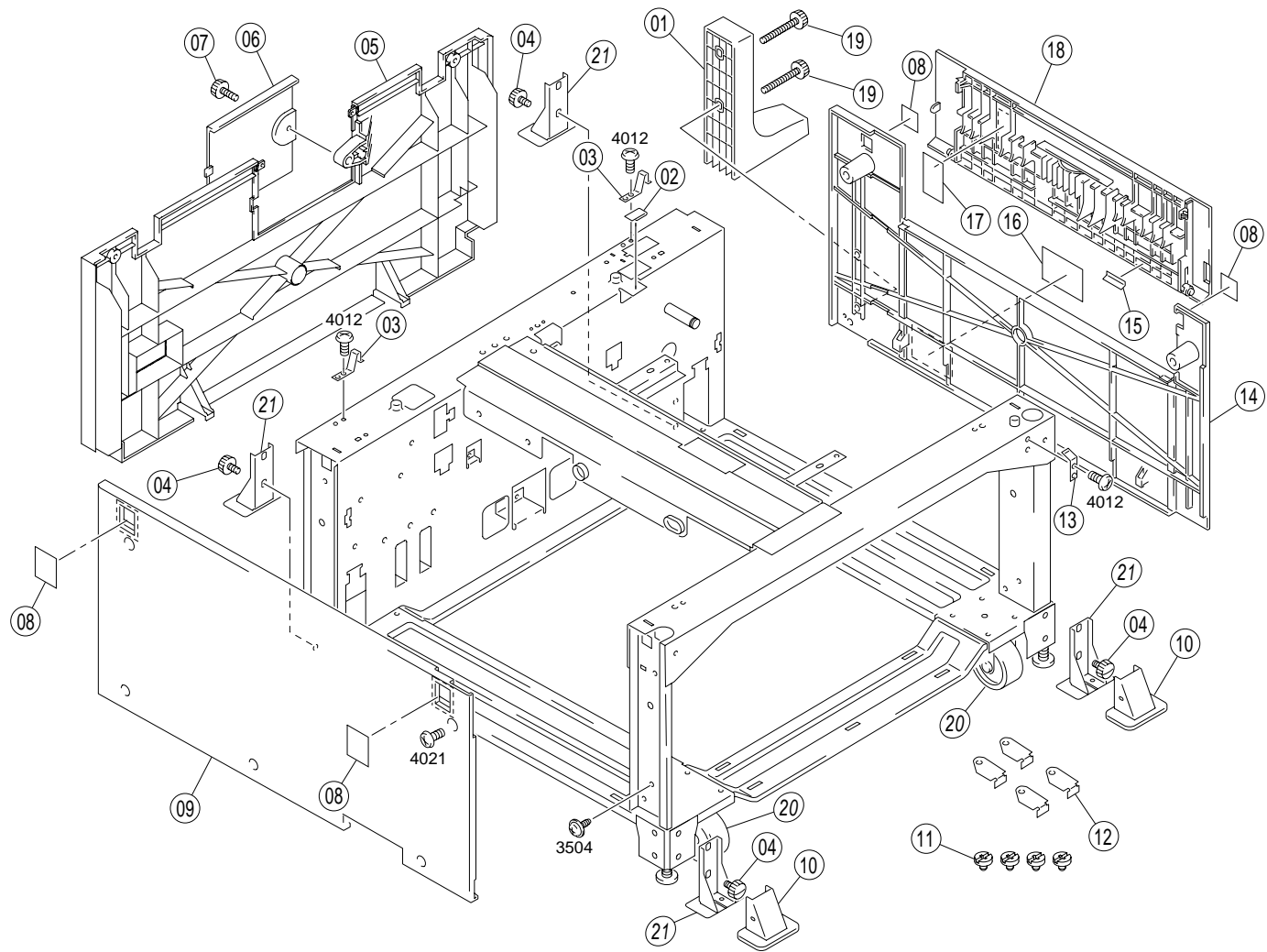


FIG. 1 HOUSING

5GD-1/5G5

SP	Ref. No.	Part. No.	Description	Quantity
	1	5GD20500	STOPPER	1
	2	5GD20050	SHEET	1
	3	5GD10100	EARTH GROUND	2
	4	5GD20470	SHOULDER SCREW	4
●	5	5GD10050	COVER	1
●	6	5GD10060	COVER	1
	7	5GD10080	SHOULDER SCREW	1
●	8	5GD10070	SEAL	4
●	9	5GD20030	LEFT COVER	1
	10	5GD20490	COVER	2
	11	5GD10190	SCREW	4
	12	5GC10420	STOP PLATE	4
	13	5GD10090	EARTH GROUND	1
●	14	5GD20020	RIGHT COVER	1
	15	5GD20320	SHEET	1
	16	5GD20460	LABEL WARNING	1
	17	5GD20310	SHEET	1
●	18	5GD20300	COVER	1
	19	5GD20480	SHOULDER SCREW	2
	20	5GD10250	CASTOR	4
●	21	5GD20720	BRACKET	4

• Parts with "●" indicates the spare parts.

FIG. 2 PAPER TAKE-UP SECTION (A)

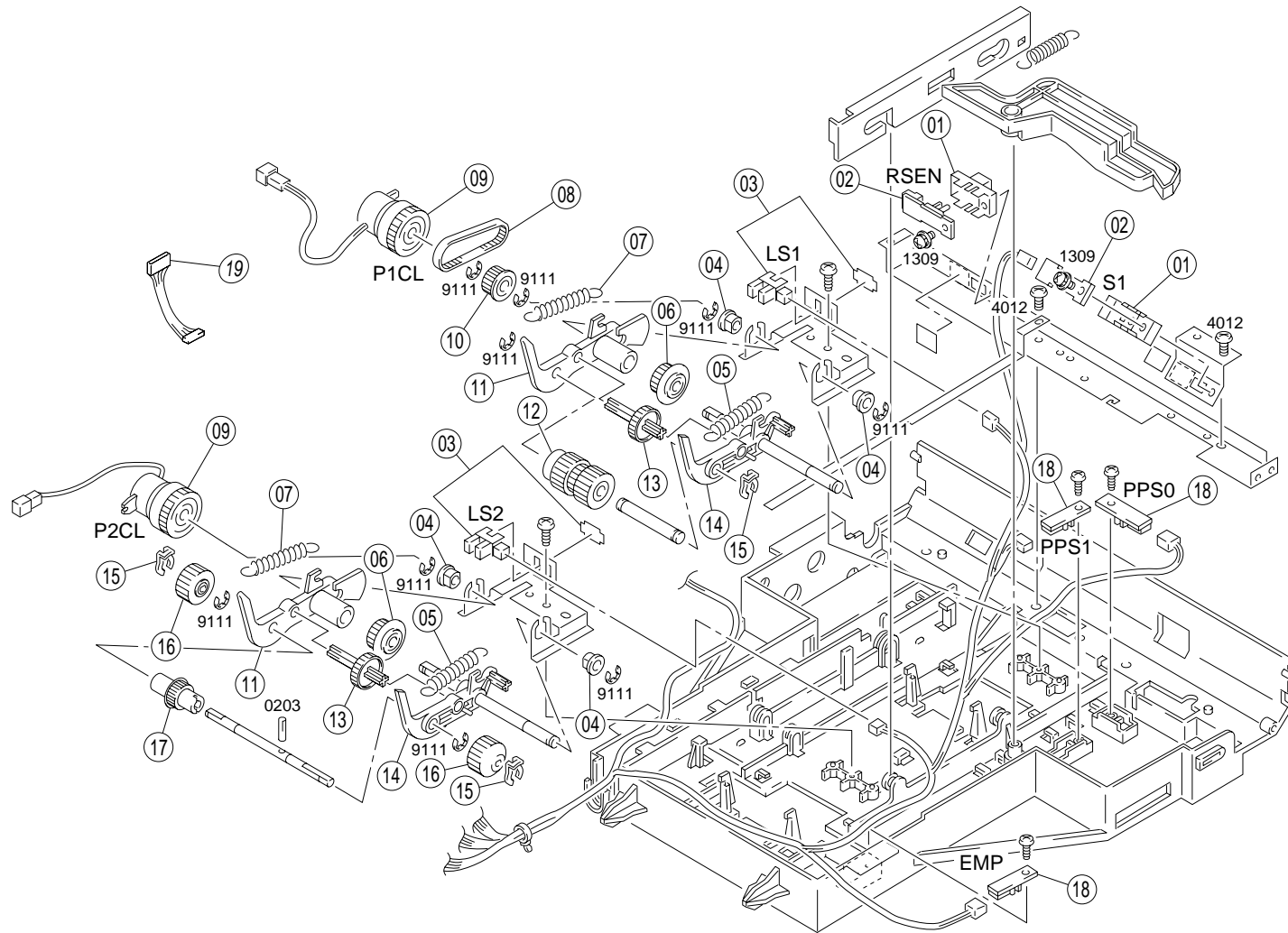


FIG. 2 PAPER TAKE-UP SECTION (A)

5GD-1/5G5

SP	Ref. No.	Part. No.	Description	Quantity
	1	5GD20270	HOLDER	2
●	2	5GD20350	PHOTO INTERRUPTER	2
●	3	5GD10020	PHOTO INTERRUPTER	2
●	4	5GD20130	BUSHING	4
	5	5GD20220	TENSION SPRING	2
●	6	5GD20210	PULLEY 20T	2
	7	5GD20230	TENSION SPRING	2
●	8	5GD20260	TIMING BELT	1
●	9	5GD20370	CLUTCH	1
●	10	5GD20240	PULLEY 18T	1
	11	5GD20200	ARM	2
●	12	5GD01020	ROLLER	1
●	13	5GD10180	GEAR	2
	14	5GD20190	ARM	2
	15	5GD20180	STOPPER RING	3
●	16	5GD01030	ROLLER	2
●	17	5GD20330	GEAR	1
●	18	5GD20340	PWB ASSY	3
●	19	5GD10310	WIRE HARNESS ASS'Y	1

• Parts with "●" indicates the spare parts.

FIG. 3 PAPER TAKE-UP SECTION (B)

5GD-1/5G5

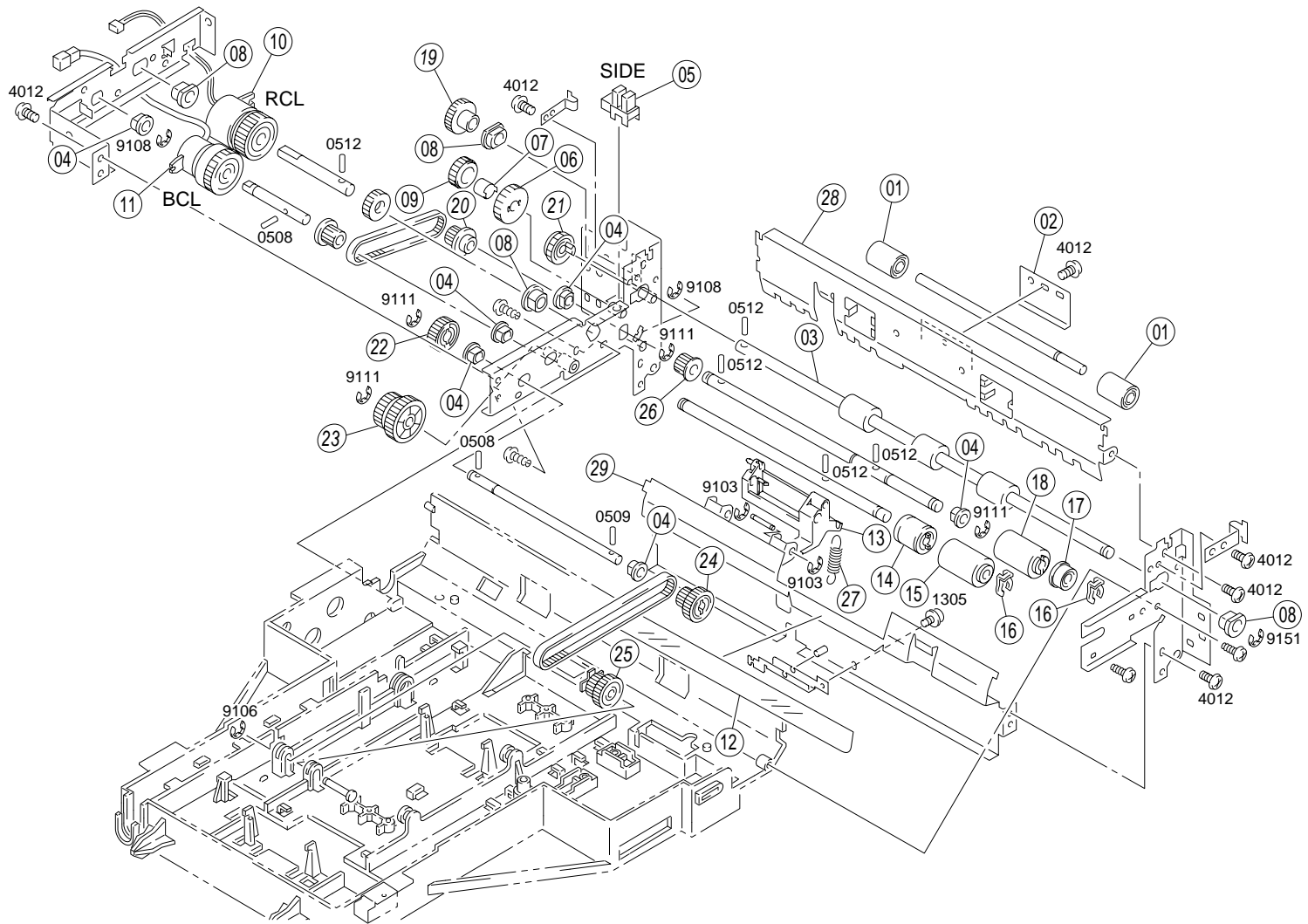


FIG. 3 PAPER TAKE-UP SECTION (B)

5GD-1/5G5

SP	Ref. No.	Part. No.	Description	Quantity
●	1	5GD20280	ROLLER	2
	2	5GD20290	PLATE SPRING	1
●	3	5GD10170	ROLLER	1
●	4	5GD20130	BUSHING	6
●	5	5GD20400	PHOTO INTERRUPTER	1
●	6	5GD10130	GEAR	1
	7	5GD10140	SLEEVE	1
●	8	5GD20150	BUSH	4
●	9	5GD10120	GEAR	1
●	10	5GD20380	CLUTCH	1
●	11	5GD20390	CLUTCH	1
	12	5GD10150	GUIDE	1
	13	5GD10160	LEVER	1
●	14	5GD01050	ARBOR ASSY	1
●	15	5GD01060	ROLLER	1
	16	5GD20180	STOPPER RING	2
●	17	5GD20250	ARBOR	1
●	18	5GD01040	ROLLER	1
●	19	5GD20560	GEAR 26T	1
●	20	5GD20570	PULLEY 20T	1
●	21	5GD20580	GEAR 18T	1
●	22	5GD20590	GEAR 24T	1
●	23	5GD20600	GEAR	1
●	24	5GD20610	PLY GEAR 14/26	1
●	25	5GD20620	PLY GEAR 14/26	1
●	26	5GD20630	PULLEY 14T	1
●	27	5GD20550	TENSION SPRING	1
●	28	5GD10270	METAL FRAME	1
●	29	5GD10350	FRAME ASSY	1

• Parts with "●" indicates the spare parts.

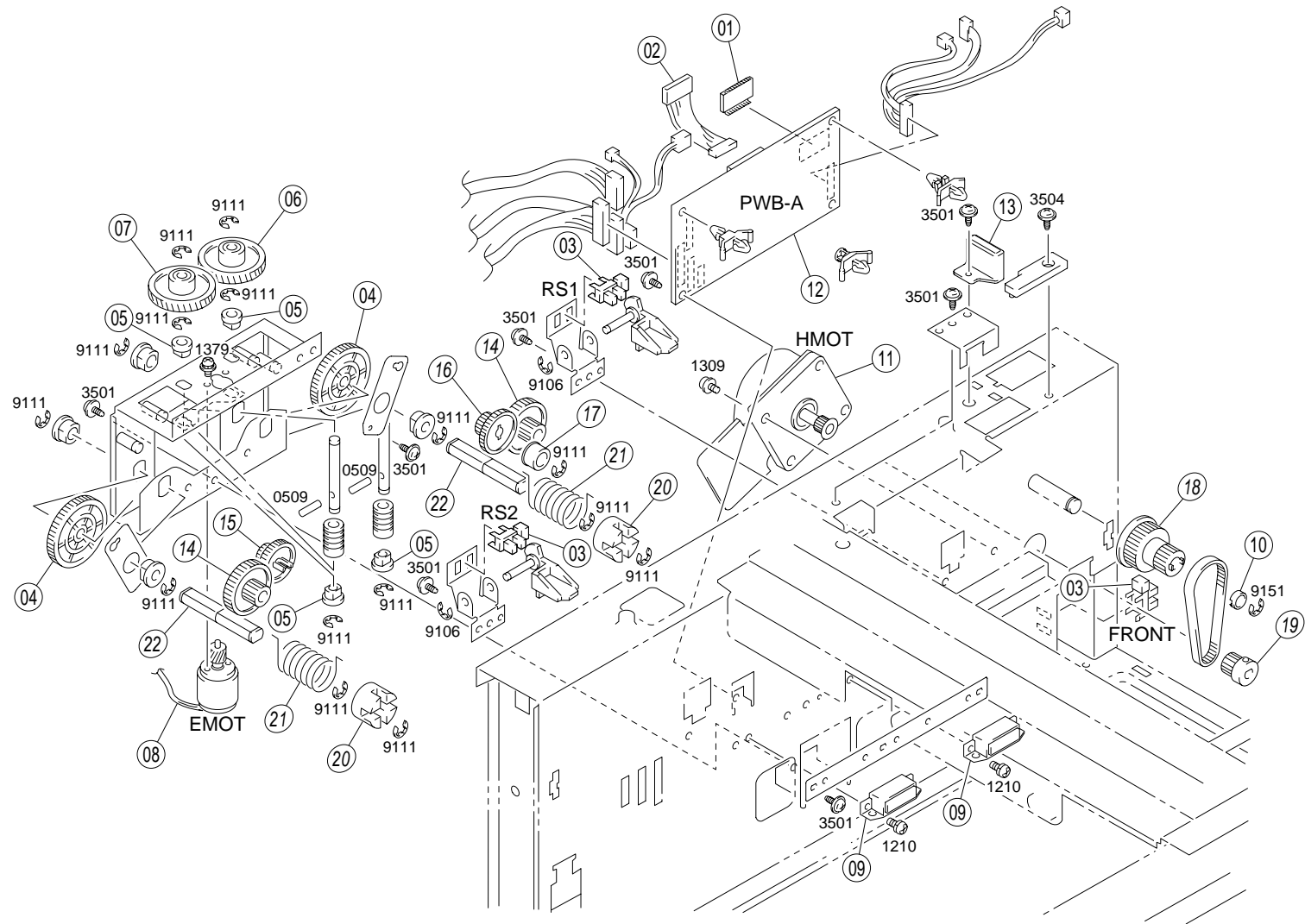


FIG. 4 DRIVE SECTION

5GD-1/5G5

SP	Ref. No.	Part. No.	Description	Quantity
●	1	5GD10220	IC (ST-2500)	1
●	1	5G510030	IC (PF-620)	1
	2	5GD10240	WIRE HARNESS ASSY	1
●	3	5GD20400	PHOTO INTERRUPTER	3
●	4	5GD20140	GEAR 58T	2
●	5	5GD20130	BUSHING	4
●	6	5GD20120	GEAR 72T	1
●	7	5GD20110	GEAR 72T	1
●	8	5GD20360	MOTOR	1
	9	5GD20060	MAGNET	2
●	10	5GD10200	PULLEY	1
●	11	5GD10210	MOTOR	1
●	12	5GD01070	PWB ASSY (PWB-A)	1
	13	5GD10110	GUIDE	1
●	14	5GD20640	GEAR 16/32T	2
●	15	5GD20650	GEAR 16/32T	1
●	16	5GD20660	GEAR 16/32T	1
●	17	5GD20670	ARBOR	1
●	18	5GD20680	GEAR	1
●	19	5GD20690	PULLEY 18	1
●	20	5GD10340	JOINT	2
●	21	5GD10330	PRESSURE SPRING	2
●	22	5GD10320	SHAFT	2

• Parts with "●" indicates the spare parts.

FIG. 5 PAPER TRAY UNIT (A)

5GD-1/5G5

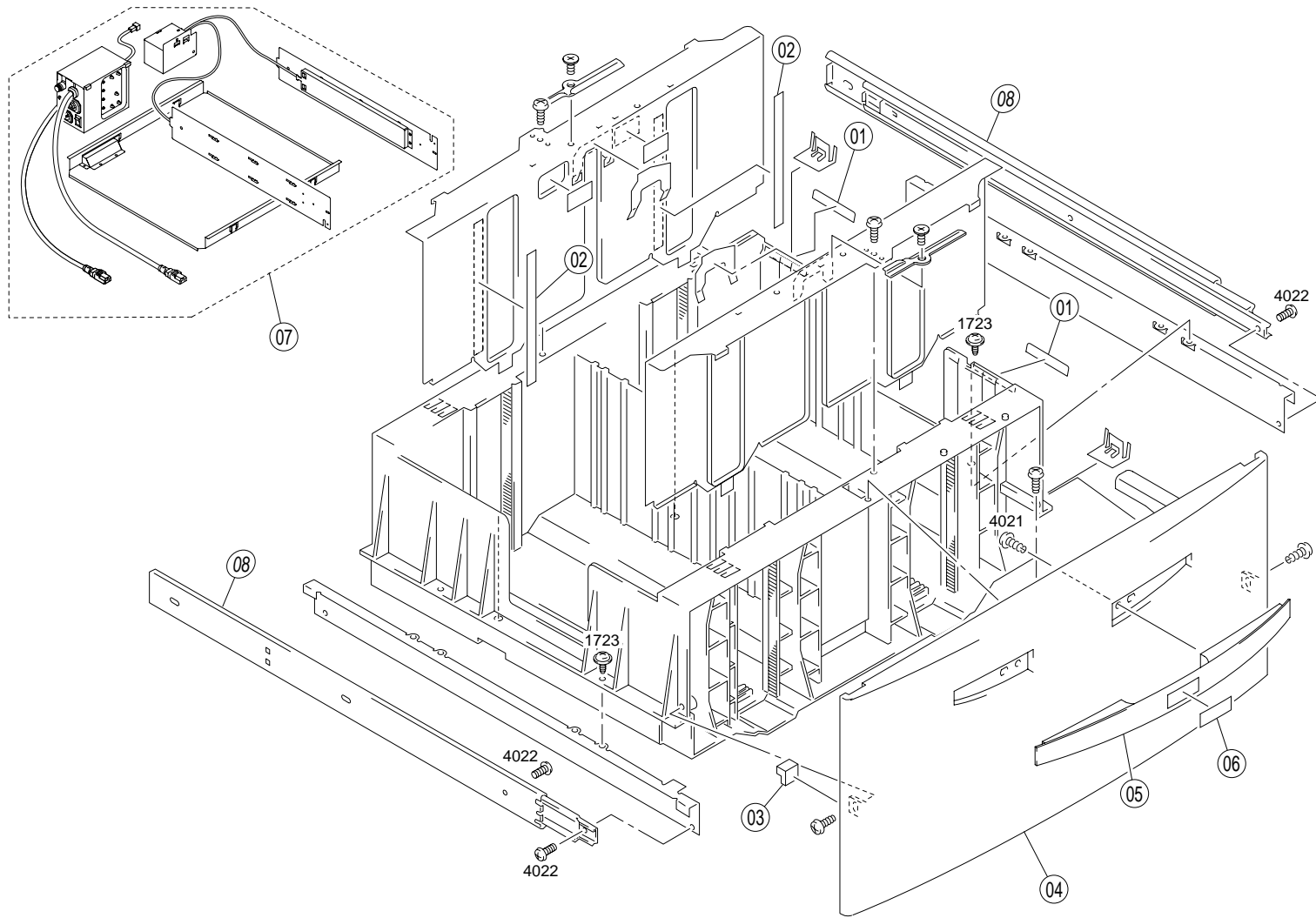


FIG. 5 PAPER TRAY UNIT (A)

5GD-1/5G5

SP	Ref. No.	Part. No.	Description	Quantity
	1	5GD20160	POLYESTER FILM	2
	2	5GD20170	GUIDE	2
	3	5GD20040	STOPPER	1
●	4	5GD10030	COVER	1
	5	5GD10040	HANDLE	1
	6	5GD20450	LABEL LETTER	1
●	7	5GD10010	HEATER ASSY	1
●	8	5GD10290	RAIL	2

• Parts with "●" indicates the spare parts.



FIG. 6 PAPER TRAY UNIT (B)

5GD-1/5G5

SP	Ref. No.	Part. No.	Description	Quantity
●	1	5GD01010	ROLLER ASSY	1
	2	5GD20080	TORSION SPRING	1
	3	5GD20070	TORSION SPRING	1
●	4	5GD20090	PULLEY	2
●	5	5GD20100	TIMING BELT	2
	6	5GD20410	WIRING SADDLE	2
	7	5GD20420	WIRING SADDLE	6
	8	5GD20010	WIRING SADDLE	1
	9	5GD20430	CORD CLAMP	4
	10	5BM09840	WIRING SADDLE	2
	11	5BM09880	CABLE TIE	3
	12	5GD20440	CORD CLAMP	1
	13	5GD10230	EDGE COVER	2
●	14	5GD20700	CAM	2
●	15	5GD20710	GEAR 24T	8

• Parts with "●" indicates the spare parts.

INDEX

5GD-1/5G5

SP	Part. No.	Description	Quantity	Fig. No.
	5BM09840	WIRING SADDLE	2	6
	5BM09880	CABLE TIE	3	6
	5GC10420	STOP PLATE	4	1
●	5GD01010	ROLLER ASSY	1	6
●	5GD01020	ROLLER	1	2
●	5GD01030	ROLLER	2	2
●	5GD01040	ROLLER	1	3
●	5GD01050	ARBOR ASSY	1	3
●	5GD01060	ROLLER	1	3
●	5GD01070	PWB ASSY (PWB-A)	1	4
●	5GD10010	HEATER ASSY	1	5
●	5GD10020	PHOTO INTERRUPTER	2	2
●	5GD10030	COVER	1	5
	5GD10040	HANDLE	1	5
●	5GD10050	COVER	1	1
●	5GD10060	COVER	1	1
●	5GD10070	SEAL	4	1
	5GD10080	SHOULDER SCREW	1	1
	5GD10090	EARTH GROUND	1	1
	5GD10100	EARTH GROUND	2	1
	5GD10110	GUIDE	1	4
●	5GD10120	GEAR	1	3
●	5GD10130	GEAR	1	3
	5GD10140	SLEEVE	1	3
	5GD10150	GUIDE	1	3
	5GD10160	LEVER	1	3
●	5GD10170	ROLLER	1	3
●	5GD10180	GEAR	2	2
	5GD10190	SCREW	4	1
●	5GD10200	PULLEY	1	4
●	5GD10210	MOTOR	1	4
●	5GD10220	IC (ST-2500)	1	4
	5GD10230	EDGE COVER	2	6
	5GD10240	WIRE HARNESS ASSY	1	4
	5GD10250	CASTOR	4	1
●	5GD10270	METAL FRAME	1	3
●	5GD10290	RAIL	2	5
●	5GD10310	WIRE HARNESS ASSY	1	2
●	5GD10320	SHAFT	2	4
●	5GD10330	PRESSURE SPRING	2	4

SP	Part. No.	Description	Quantity	Fig. No.
●	5GD10340	JOINT	2	4
●	5GD10350	FRAME ASSY	1	3
	5GD20010	WIRING SADDLE	1	6
●	5GD20020	RIGHT COVER	1	1
●	5GD20030	LEFT COVER	1	1
	5GD20040	STOPPER	1	5
	5GD20050	SHEET	1	1
	5GD20060	MAGNET	2	4
	5GD20070	TORSION SPRING	1	6
	5GD20080	TORSION SPRING	1	6
●	5GD20090	PULLEY	2	6
●	5GD20100	TIMING BELT	2	6
●	5GD20110	GEAR 72T	1	4
●	5GD20120	GEAR 72T	1	4
●	5GD20130	BUSHING	14	2,3,4
●	5GD20140	GEAR 58T	2	4
●	5GD20150	BUSH	4	3
	5GD20160	POLYESER FILM	2	5
	5GD20170	GUIDE	2	5
	5GD20180	STOPPER RING	5	2,3
	5GD20190	ARM	2	2
	5GD20200	ARM	2	2
●	5GD20210	PULLEY 20T	2	2
	5GD20220	TENSION SPRING	2	2
	5GD20230	TENSION SPRING	2	2
●	5GD20240	PULLEY 18T	1	2
●	5GD20250	ARBOR	1	3
●	5GD20260	TIMING BELT	1	2
	5GD20270	HOLDER	2	2
●	5GD20280	ROLLER	2	3
	5GD20290	PLATE SPRING	1	3
●	5GD20300	COVER	1	1
	5GD20310	SHEET	1	1
	5GD20320	SHEET	1	1
●	5GD20330	GEAR	1	2
●	5GD20340	PWB ASSY	3	2
●	5GD20350	PHOTO INTERRUPTER	2	2
●	5GD20360	MOTOR	1	4
●	5GD20370	CLUTCH	1	2
●	5GD20380	CLUTCH	1	3

• Parts with "●" indicates the spare parts.

SP	Part. No.	Description	Quantity	Fig. No.
●	5GD20390	CLUTCH	1	3
●	5GD20400	PHOTO INTERRUPTER	4	3,4
	5GD20410	WIRING SADDLE	2	6
	5GD20420	WIRING SADDLE	6	6
	5GD20430	CORD CLAMP	4	6
	5GD20440	CORD CLAMP	1	6
	5GD20450	LABEL LETTER	1	5
	5GD20460	LABEL WARNING	1	1
	5GD20470	SHOULDER SCREW	4	1
	5GD20480	SHOULDER SCREW	2	1
	5GD20490	COVER	2	1
	5GD20500	STOPPER	1	1
●	5GD20550	TENSION SPRING	1	3
●	5GD20560	GEAR 26T	1	3
●	5GD20570	PULLEY 20T	1	3
●	5GD20580	GEAR 18T	1	3
●	5GD20590	GEAR 24T	1	3
●	5GD20600	GEAR	1	3
●	5GD20610	PLY GEAR 14/26	1	3
●	5GD20620	PLY GEAR 14/26	1	3
●	5GD20630	PULLEY 14T	1	3
●	5GD20640	GEAR 16/32T	2	4
●	5GD20650	GEAR 16/32T	1	4
●	5GD20660	GEAR 16/32T	1	4
●	5GD20670	ARBOR	1	3
●	5GD20680	GEAR	1	4
●	5GD20690	PULLEY 18	1	4
●	5GD20700	CAM	2	6
●	5GD20710	GEAR 24T	8	6
●	5GD20720	BRACKET	4	1
●	5G510030	IC (PF-620)	1	4

• Parts with "●" indicates the spare parts.

## CLASSIFICATION OF THE SCREWS IN ILLUSTRATION

<u>REF.</u>	<u>ITEM #</u>	<u>DESCRIPTION</u>
0203	5F931490	PIN
0245	5GD20540	SPRING ROLL PIN
0508	50355060	PIN M20X10(STAINLESS)
0509	50355070	PIN M20X12(STAINLESS)
0512	50356100	PIN M20X8(STAINLESS)
0531	5GD20530	PIN
1210	50355140	SCREW M3X8 (P-ZN(C))
1305	50355160	SCREW M3X6 (P-ZN(C))
1309	50355180	SCREW M3X10 (P-ZN(C))
1723	5GD20510	SCREW
3501	50355570	TAPPING SCREW M3X6(P-ZN(C))
3504	50355590	TAPPING SCREW M3X8(P-ZN(C))
4012	50356260	TAPPING SCREW M3X6(P-ZN(C))
4021	50355830	TAPPING SCREW M3X8(P-CD)
4022	5GD20520	TAPPING SCREW
9103	5BM10010	RETAINING RING E-2
9106	5BM10020	RETAINING RING E-3
9108	5BM10030	RETAINING RING E-4
9111	5BM10040	RETAINING RING E-5
9151	5BM10060	RETAINING RING E-7

## **KYOCERA MITA AMERICA, INC.**

### **Headquarters:**

225 Sand Road, P.O. Box 40008  
Fairfield, New Jersey 07004-0008  
TEL : (973) 808-8444  
FAX : (973) 882-6000

### **New York Show Room:**

1410 Broadway 23rd floor  
New York, NY 10018  
TEL : (917) 286-5400  
FAX : (917) 286-5402

### **Northeastern Region:**

225 Sand Road, P.O. Box 40008  
Fairfield, New Jersey 07004-0008  
TEL : (973) 808-8444  
FAX : (973) 882-4401

### **Midwestern Region:**

201 Hansen Court Suite 119  
Wood Dale, Illinois 60191  
TEL : (630) 238-9982  
FAX : (630) 238-9487

### **Western Region:**

14101 Alton Parkway,  
Irvine, California 92618-7006  
TEL : (949) 457-9000  
FAX : (949) 457-9119

### **Southeastern Region:**

1500 Oakbrook Drive,  
Norcross, Georgia 30093  
TEL : (770) 729-9786  
FAX : (770) 729-9873

### **Southwestern Region:**

2825 West Story Road,  
Irving, Texas 75038-5299  
TEL : (972) 550-8987  
FAX : (972) 570-4704

### **Dallas Parts Distribution Center & National Training Center:**

2825 West Story Road,  
Irving, Texas 75038-5299  
TEL : (972) 659-0055  
FAX : (972) 570-5816

## **KYOCERA MITA CANADA, LTD.**

6120 Kestrel Road, Mississauga,  
Ontario L5T 1S8, Canada  
TEL : (905) 670-4425  
FAX : (905) 670-8116

## **KYOCERA MITA MEXICO, S.A. DE C.V.**

Av. 16 de Septiembre #407  
Col. Santa Inés,  
02130 Azcapotzalco  
México, D.F. México  
TEL : (55) 383-2741  
FAX : (55) 383-7804

© 2002 KYOCERA MITA CORPORATION

 **KYOCERA** is a trademark of Kyocera Corporation

**mita** is a registered trademark of KYOCERA MITA CORPORATION

Printed in U.S.A.