



**CN3102e PS Color Server**

CONFIGURATION GUIDE



## About the Documentation

This manual is part of a set of Fiery X3e™ documentation that includes the following manuals for users and system administrators:

- The *Quick Start Guide* summarizes the steps for configuring the Fiery X3e and printing. It also describes how to access the online documentation.
- The *User Software Installation Guide* describes how to install software from the User Software CD to enable users to print to the Fiery X3e, and also describes setting up printing connections to the Fiery X3e.
- The *Configuration Guide* explains basic configuration and administration of the Fiery X3e for the supported platforms and network environments. It also includes guidelines for setting up UNIX, Windows NT 4.0/2000, and Novell NetWare servers to provide printing services to users.
- The *Printing Guide* describes the printing features of the Fiery X3e for users who send jobs from their computers.
- The *Color Guide* provides information on managing the color output of the Fiery X3e. It explains how to calibrate your Fiery X3e and take advantage of the ColorWise® color management system, as well as features in ColorWise Pro Tools™.
- The *Fiery Color Reference* addresses concepts and issues associated with managing color output of the Fiery X3e and outlines key workflow scenarios. In addition, it offers information on printing color documents from popular Microsoft Windows and Apple Mac OS applications.
- The *Job Management Guide* explains the functions of the job management utilities, including Command WorkStation™ and DocBuilder Pro™, and how you can use them to monitor and control jobs on the Fiery X3e. This manual is intended for an operator or administrator, or a user with the necessary access privileges, who monitors and manages job flow, performs color calibration, and troubleshoots problems that may arise.
- *Release Notes* provide last-minute product information and workarounds for some of the problems you may encounter.

## Copyright © 2002 Electronics For Imaging, Inc. All rights reserved.

This publication is protected by copyright, and all rights are reserved. No part of it may be reproduced or transmitted in any form or by any means for any purpose without express prior written consent from Electronics For Imaging, Inc., except as expressly permitted herein. Information in this document is subject to change without notice and does not represent a commitment on the part of Electronics For Imaging, Inc.

The software described in this publication is furnished under license and may only be used or copied in accordance with the terms of such license.

This product may be covered by one or more of the following U.S. Patents: 4,500,919, 4,837,722, 5,212,546, 5,343,311, 5,424,754, 5,467,446, 5,506,946, 5,517,334, 5,537,516, 5,543,940, 5,553,200, 5,615,314, 5,619,624, 5,625,712, 5,666,436, 5,760,913, 5,818,645, 5,835,788, 5,867,179, 5,959,867, 5,970,174, 5,982,937, 5,995,724, 6,002,795, 6,025,922, 6,041,200, 6,065,041, 6,112,665, 6,122,407, 6,134,018, 6,141,120, 6,166,821, 6,185,335, 6,201,614, 6,215,562, 6,219,659, 6,222,641, 6,224,048, 6,225,974, 6,226,419, 6,238,105, 6,239,895, 6,256,108, 6,269,190, 6,289,122, 6,292,270, 6,310,697, 6,327,047, 6,327,050, 6,327,052, RE36,947, D406,117, D416,550, D417,864, D419,185, D426,206, D439,851, D444,793

### Trademarks

ColorWise, EDOX, EFI, Fiery, the Fiery logo, Fiery Driven and RIP-While-Print are registered trademarks of Electronics For Imaging, Inc. in the U.S. Patent and Trademark Office and/or certain other foreign jurisdictions.

The eBeam logo, the Electronics For Imaging logo, the Fiery Driven logo, the PrintMe logo, the Splash logo, AutoCal, ColorCal, Command WorkStation, DocBuilder, DocBuilder Pro, DocStream, eBeam, EFI Color Profiler, EFI Production System, EFI ScanBuilder, Fiery X2, Fiery X2e, Fiery X2-W, Fiery X3e, Fiery X4, Fiery ZX, Fiery Z4, Fiery Z5, Fiery Z9, Fiery Z16, Fiery Z18, Fiery Document WorkStation, Fiery Downloader, Fiery Driver, Fiery FreeForm, Fiery Link, Fiery Prints, Fiery Print Calibrator, Fiery Production System, Fiery Scan, Fiery ScanBuilder, Fiery Spark, Fiery Spooler, Fiery WebInstaller, Fiery WebScan, Fiery WebSpooler, Fiery WebStatus, Fiery WebTools, NetWise, PrintMe, PrintMe Networks, Print Me. Everywhere You Go, RIPChips, Splash, Velocity, Velocity Balance, Velocity Build, Velocity Design, Velocity Estimate, Velocity Scan, and VisualCal are trademarks of Electronics For Imaging, Inc.

All other terms and product names may be trademarks or registered trademarks of their respective owners, and are hereby acknowledged.

### Legal Notices

**APPLE COMPUTER, INC. ("APPLE") MAKES NO WARRANTIES, EXPRESS OR IMPLIED, INCLUDING WITHOUT LIMITATION THE IMPLIED WARRANTIES OF MERCHANTABILITY AND FITNESS FOR A PARTICULAR PURPOSE, REGARDING THE APPLE SOFTWARE. APPLE DOES NOT WARRANT, GUARANTEE, OR MAKE ANY REPRESENTATIONS REGARDING THE USE OR THE RESULTS OF THE USE OF THE APPLE SOFTWARE IN TERMS OF ITS CORRECTNESS, ACCURACY, RELIABILITY, CURRENTNESS, OR OTHERWISE. THE ENTIRE RISK AS TO THE RESULTS AND PERFORMANCE OF THE APPLE SOFTWARE IS ASSUMED BY YOU. THE EXCLUSION OF IMPLIED WARRANTIES IS NOT PERMITTED BY SOME STATES. THE ABOVE EXCLUSION MAY NOT APPLY TO YOU.**

**IN NO EVENT WILL APPLE, ITS DIRECTORS, OFFICERS, EMPLOYEES OR AGENTS BE LIABLE TO YOU FOR ANY CONSEQUENTIAL, INCIDENTAL OR INDIRECT DAMAGES (INCLUDING DAMAGES FOR LOSS OF BUSINESS PROFITS, BUSINESS INTERRUPTION, LOSS OF BUSINESS INFORMATION, AND THE LIKE) ARISING OUT OF THE USE OR INABILITY TO USE THE APPLE SOFTWARE EVEN IF APPLE HAS BEEN ADVISED OF THE POSSIBILITY OF SUCH DAMAGES. BECAUSE SOME STATES DO NOT ALLOW THE EXCLUSION OR LIMITATION OF LIABILITY FOR CONSEQUENTIAL OR INCIDENTAL DAMAGES, THE ABOVE LIMITATIONS MAY NOT APPLY TO YOU.** Apple's liability to you for actual damages from any cause whatsoever, and regardless of the form of the action (whether in contract, tort [including negligence], product liability or otherwise), will be limited to \$50.

### Restricted Rights Legends

For defense agencies: Restricted Rights Legend. Use, reproduction, or disclosure is subject to restrictions set forth in subparagraph (c)(1)(ii) of the Rights in Technical Data and Computer Software clause at 252.227.7013.

For civilian agencies: Restricted Rights Legend. Use, reproduction, or disclosure is subject to restrictions set forth in subparagraph (a) through (d) of the commercial Computer Software Restricted Rights clause at 52.227-19 and the limitations set forth in Electronics For Imaging's standard commercial agreement for this software. Unpublished rights reserved under the copyright laws of the United States.

**Part Number:** 45028509

### **FCC Information**

WARNING: FCC Regulations state that any unauthorized changes or modifications to this equipment not expressly approved by the manufacturer could void the user's authority to operate this equipment.

### **Class A Compliance**

This equipment has been tested and found to comply with the limits for a Class A digital device, pursuant to Part 15 of the FCC Rules. These limits are designed to provide reasonable protection against harmful interference when the equipment is operated in a commercial environment. This equipment generates, and uses, and can radiate radio frequency energy and, if not installed and used in accordance with the instruction manual, may cause harmful interference to radio communications. Operation of this equipment in a residential area is likely to cause interference in which case the user will be required to correct the interference at his own expense.

### **Industry Canada Class A Notice**

This Class A digital apparatus complies with Canadian ICES-003.

### **Avis de Conformation Classe A de l'Industrie Canada**

Cet appareil numérique de la Classe A est conforme à la norme NMB-003 du Canada.

### **CE Marking (Declaration of Conformity)**

This product complies with the following EU directives: 89/336/EEC, 73/23/EEC, and 93/68/EEC directives. This declaration is valid for the area of the European Union.

### **RFI Compliance Notice**

This equipment has been tested concerning compliance with the relevant RFI protection requirements both individually and on system level (to simulate normal operation conditions). However, it is possible that these RFI Requirements are not met under certain unfavorable conditions in other installations. It is the user who is responsible for compliance of his particular installation.

Dieses Gerät wurde sowohl einzeln als auch in einer Anlage, die einen normalen Anwendungsfall nachbildet, auf die Einhaltung der Funkstörbestimmungen geprüft. Es ist jedoch möglich, dass die Funkstörbestimmungen unter ungünstigen Umständen bei anderen Gerätekombinationen nicht eingehalten werden. Für die Einhaltung der Funkstörbestimmungen einer gesamten Anlage, in der dieses Gerät betrieben wird, ist der Betreiber verantwortlich.

Compliance with applicable regulations depends on the use of shielded cables. It is the user who is responsible for procuring the appropriate cables.

Die Einhaltung zutreffender Bestimmungen hängt davon ab, dass geschirmte Ausführungen benützt werden. Für die Beschaffung richtiger Ausführungen ist der Betreiber verantwortlich.

### **Software License Agreement**

YOU SHOULD CAREFULLY READ THE FOLLOWING TERMS AND CONDITIONS BEFORE USING THIS SOFTWARE. IF YOU DO NOT AGREE TO THE TERMS AND CONDITIONS OF THIS AGREEMENT, DO NOT USE THE SOFTWARE. INSTALLING OR USING THE SOFTWARE INDICATES THAT YOU AGREE TO AND ACCEPT THE TERMS OF THIS AGREEMENT. IF YOU DO NOT AGREE TO ACCEPT THE TERMS OF THIS AGREEMENT YOU MAY RETURN THE UNUSED SOFTWARE FOR A FULL REFUND TO THE PLACE OF PURCHASE.

### **License**

EFI grants you a non-exclusive license to use the software ("Software") and accompanying documentation ("Documentation") included with the Product. The Software is licensed, not sold. You may use the Software solely for your own customary business or personal purposes. You may not rent, lease, sublicense or lend the Software. You may, however, permanently transfer all of your rights under this Agreement to another person or legal entity provided that: (1) you transfer to the person or entity all of the Software and Documentation (including all copies, updates, upgrades, prior versions, component parts, the media and printed materials, and this Agreement); (2) you retain no copies of the Software and Documentation, including copies stored on a computer; and (3) the recipient agrees to the terms and conditions of this Agreement.

You may not make or have made, or permit to be made, any copies of the Software or portions thereof, except as necessary for backup or archive purposes in support of your use of the Software as permitted hereunder. You may not copy the Documentation. You may not attempt to alter, disassemble, decompile, decrypt or reverse engineer the Software.

### **Proprietary Rights**

You acknowledge that the Software is proprietary to EFI and its suppliers and that title and other intellectual property rights therein remain with EFI and its suppliers. Except as stated above, this Agreement does not grant you any right to patents, copyrights, trade secrets, trademarks (whether registered or unregistered), or any other rights, franchises or licenses in respect of the Software. You may not adopt or use any trademark or trade name which is likely to be similar to or confusing with that of EFI or any of its suppliers or take any other action which impairs or reduces the trademark rights of EFI or its suppliers.

**Confidentiality**

You agree to hold the Software in confidence, disclosing the Software only to authorized users having a need to use the Software as permitted by this Agreement and to take all reasonable precautions to prevent disclosure to other parties.

**Remedies and Termination**

Unauthorized use, copying or disclosure of the Software, or any breach of this Agreement will result in automatic termination of this license and will make available to EFI other legal remedies. In the event of termination, you must destroy all copies of the Software and all of its component parts. All provisions of this Agreement relating to disclaimers of warranties, limitation of liability, remedies, damages, and EFI's proprietary rights shall survive termination.

**Limited Warranty and Disclaimer**

EFI warrants to the original purchaser ("Customer") for thirty (30) days from the date of original purchase from EFI or its authorized retailer that the Software will perform in substantial conformance to the Documentation when the Product is used as authorized by EFI's specifications. EFI warrants the media containing the Software against failure during the above warranty period. EFI makes no warranty or representation that the Software will meet your specific requirements, that the operation of the Software will be uninterrupted or error free, or that all defects in the Software will be corrected. EFI makes no warranty, implied or otherwise, regarding the performance or reliability of any third party products (software or hardware) not provided by EFI. THE INSTALLATION OF ANY THIRD PARTY PRODUCTS OTHER THAN AS AUTHORIZED BY EFI WILL VOID THIS WARRANTY. IN ADDITION, USE, MODIFICATION, AND/OR REPAIR OF THE PRODUCT OTHER THAN AS AUTHORIZED BY EFI WILL VOID THIS WARRANTY.

EXCEPT FOR THE ABOVE EXPRESS LIMITED WARRANTY, EFI MAKES AND YOU RECEIVE NO WARRANTIES OR CONDITIONS ON THE SOFTWARE, EXPRESS, IMPLIED, STATUTORY, OR IN ANY OTHER PROVISION OF THIS AGREEMENT OR COMMUNICATION WITH YOU, AND EFI SPECIFICALLY DISCLAIMS ANY IMPLIED WARRANTY OR CONDITION OF MERCHANTABILITY OR FITNESS FOR A PARTICULAR PURPOSE OR NONINFRINGEMENT OF THIRD PARTY RIGHTS.

**Limitation of Liability**

TO THE MAXIMUM EXTENT PERMITTED BY LAW, EFI AND ITS SUPPLIERS SHALL NOT BE LIABLE FOR ANY DAMAGES, INCLUDING LOSS OF DATA, LOST PROFITS, COST OF COVER OR OTHER SPECIAL, INCIDENTAL, CONSEQUENTIAL OR INDIRECT DAMAGES ARISING FROM THE SALE, INSTALLATION, MAINTENANCE, USE, PERFORMANCE OR FAILURE OF THE SOFTWARE, HOWEVER CAUSED AND ON ANY THEORY OF LIABILITY. THIS LIMITATION WILL APPLY EVEN IF EFI HAS BEEN ADVISED OF THE POSSIBILITY OF SUCH DAMAGE. YOU ACKNOWLEDGE THAT THE PRICE OF THE PRODUCT REFLECTS THIS ALLOCATION OF RISK. BECAUSE SOME JURISDICTIONS DO NOT ALLOW THE EXCLUSION OR LIMITATION OF LIABILITY FOR CONSEQUENTIAL OR INCIDENTAL DAMAGES, THE ABOVE LIMITATION MAY NOT APPLY TO YOU.

**Export Controls**

You agree that you will not export or re-export the Software in any form in violation of any applicable laws or regulations of the United States or the country in which you obtained them.

**U.S. Government Restricted Rights:**

The Software and Documentation are provided with RESTRICTED RIGHTS. Use, duplication, or disclosure by the United States Government is subject to restrictions as set forth in subparagraph (c)(1)(ii) of the Rights in Technical Data and Computer Software clause at DFARS 252.227-7013 or subparagraphs (c)(1) and (2) of the Commercial Computer Software Restricted Rights at 48 CFR 52.227-19, as applicable.

**General**

The laws of the State of California govern this Agreement. You agree that this Agreement shall not be subject to the United Nations Convention on Contracts for the International Sale of Goods (1980). This Agreement is the entire agreement held between us and supersedes any other communications or advertising with respect to the Software. If any provision of this Agreement is held invalid, the remainder of this Agreement shall continue in full force and effect.

If you have any questions, please see EFI's web site at [www.efi.com](http://www.efi.com).

Electronics For Imaging  
303 Velocity Way  
Foster City, CA 94404



# Contents

## About the Documentation

### Introduction

---

About this manual	xi
-------------------	----

## Chapter 1: Connecting to the Network

---

<b>Fiery X3e on the network</b>	1-1
<b>Stages of installation on the network</b>	1-2
<b>Quick path to installation</b>	1-4
<b>Connecting network cable to the Fiery X3e</b>	1-11
Back view of the Fiery X3e	1-11
Ethernet connection	1-12
Parallel cable connection	1-12

## Chapter 2: Setting up Network Servers

---

<b>Fiery X3e on a TCP/IP network with Windows NT 4.0/2000/XP</b>	2-1
Tips for experts—Windows NT 4.0/2000/XP with TCP/IP	2-2
Configuring a Windows NT 4.0/2000 server to communicate with the Fiery X3e	2-3
<b>Fiery X3e on a NetWare 4.x or 5.x network</b>	2-7
Tips for experts—IPX networks	2-8
Overview of IPX printing to the Fiery X3e	2-8
Configuring a NetWare 4.x server for printing	2-9
<b>Fiery X3e on a NetWare 5.x network with NDPS</b>	2-13
Tips for experts—NetWare 5.x networks	2-13
Configuring a NetWare 5.x server for printing	2-14
<b>Fiery X3e on a network with UNIX workstations</b>	2-16
Tips for experts—UNIX workstations	2-16
Important note about the remote printer name	2-17
Setting up the Fiery X3e on TCP/IP networks	2-17
Managing print jobs	2-19

## Chapter 3: Preparing for Fiery X3e Setup

<b>Levels of access and control</b>	3-1
Fiery X3e print connections	3-1
Passwords	3-3
WebTools	3-4
Control level scenarios	3-6
<b>About Setup</b>	3-7
Network server setup requirements	3-8
Ensuring the copier connection	3-8

## Chapter 4: Performing Setup from the Control Panel

<b>Fiery X3e Setup from the Control Panel</b>	4-1
<b>Fiery X3e Control Panel</b>	4-2
Safety warnings	4-2
Accessing Setup options	4-3
About the Control Panel Setup interface	4-3
Types of Setup screens	4-4
<b>Server Setup options</b>	4-4
<b>Network Setup options</b>	4-7
Port Setup options	4-9
Protocol Setup options	4-11
Service Setup options	4-17
<b>Printer Setup options</b>	4-35
<b>PostScript Setup options</b>	4-37
<b>PCL Setup options</b>	4-39
<b>Color Setup options</b>	4-41
<b>PrintMe Setup options</b>	4-44
PrintMe Activation Code	4-45
Web Proxy Setup	4-45
<b>Administrative functions in the Setup menu</b>	4-47
Job Log Setup	4-48
Exit Setup	4-49

## Chapter 5: Setting up the Fiery X3e from a Windows Computer

<b>Accessing Setup</b>	5-1
Remote Fiery Setup	5-1
<b>General Setup options</b>	5-3
Job Log Setup	5-5
<b>Network Setup</b>	5-6
Adapters/Ports	5-7
Protocols	5-9
Services	5-14
Windows print sharing with Server Message Block (SMB)	5-24
<b>Printer Setup options</b>	5-30
Printer connections	5-30
PS (PostScript) Setup	5-31
<b>Setting up printing groups</b>	5-33
<b>Exiting Setup</b>	5-34
<b>Printing the Configuration page</b>	5-34

## Chapter 6: Configuring Fiery WebTools

<b>Configuring the Fiery X3e and clients for WebTools</b>	6-1
<b>Setting up WebTools</b>	6-2
<b>Setting the WebLink destination</b>	6-3

## Chapter 7: Administering the Fiery X3e

<b>Administrator functions</b>	7-1
<b>Setting passwords</b>	7-2
Passwords from the Control Panel	7-3
Passwords	7-4
<b>Clearing the Fiery X3e</b>	7-5
<b>Managing address books</b>	7-6
<b>Printing a Configuration page from the Control Panel</b>	7-8

---

<b>Maintaining optimal Fiery X3e performance</b>	7-9
<b>Shutting down, rebooting, and restarting the Fiery X3e</b>	7-10
Shutting down and rebooting the Fiery X3e	7-10
Restarting the Fiery X3e	7-12

## **Appendix A: Troubleshooting**

---

<b>Troubleshooting the Fiery X3e</b>	A-1
Troubleshooting during Setup from the Control Panel	A-1
Runtime error messages	A-7

## **Index**

## Introduction

This manual is intended for anyone who is responsible for integrating the Fiery X3e into a business environment that includes networked personal computers. After setting up the Fiery X3e and client workstations, individual users can print to the Fiery X3e as a high-performance PostScript or PCL printer.

This manual describes how to set up network servers and clients to use the Fiery X3e and how to install user software and set up printing from Microsoft Windows and Apple Mac OS computers. For general information on using the copier, your computer, your software, or your network, see the manuals that accompany those products.

**NOTE:** The term “Windows 9x” is used in this manual to represent Windows 98.

The Fiery X3e includes support for the Fiery WebTools™ and software for Command WorkStation, which allow an operator to manage all jobs sent to the Fiery X3e. Although it may not be the case at all sites, the documentation for this product assumes the presence of an operator who controls and manages jobs sent by users from remote workstations.

Any additional connectivity or administrative features specific to the copier are described in the *Printing Guide* or the *Release Notes*.

## About this manual

This manual covers the following topics:

- Basic configuration of the Fiery X3e to support printing over AppleTalk, TCP/IP, and IPX (Novell) networks
- Administering network printing

- Configuring Novell and Microsoft Windows NT 4.0/2000 servers and UNIX systems to provide Fiery X3e printing services
- Using the Fiery X3e in mixed network environments

**NOTE:** The network guidelines in this book are not intended to replace the services of an experienced network engineer.

This manual is organized as follows:

- [Chapter 1](#) illustrates the supported network configurations and shows the network connectors on the Fiery X3e.
- [Chapter 2](#) provides guidelines for setting up Windows network servers and UNIX systems for printing to the Fiery X3e and for using WebTools.
- [Chapter 3](#) describes how to prepare for Fiery X3e Setup™, including planning system security through access levels.
- [Chapter 4](#) describes Fiery X3e configuration (Setup) from the Control Panel.
- [Chapter 5](#) describes Fiery X3e Setup from a Windows computer.
- [Chapter 6](#) describes setting up the Fiery X3e for Fiery WebTools.
- [Chapter 7](#) summarizes some administrative features of Fiery X3e software that are available for IPX/SPX, TCP/IP, and AppleTalk networks, and offers troubleshooting hints.
- [Appendix A](#) describes issues that may occur in setting up the Fiery X3e and offers solutions.

**NOTE:** Administrator features described in other manuals are summarized on [page 7-1](#).

# 1

## Chapter 1: Connecting to the Network

This chapter summarizes the stages in setting up the Fiery X3e, and includes diagrams that refer you to other chapters or other manuals for completing your installation. Check those references to find the information you need quickly.

### Fiery X3e on the network

When the Fiery X3e is connected to a network, it behaves as a networked PostScript printer. The built-in Ethernet interface on the Fiery X3e supports the following network protocols:

- AppleTalk
- TCP/IP (the lpd, nbt, and http protocols)

TCP/IP stands for Transmission Control Protocol/Internet Protocol. The lpd protocol is the standard TCP/IP printing protocol. The nbt protocol supports Windows (SMB) printing. The port 9100 is the printer server port number to publish print connections between the print server and a remote computer. The http protocol is commonly used for Web pages on the Internet and on intranets. The http protocol also supports IPP printing.

- IPX/SPX (Novell)

IPX/SPX stands for Internetwork Packet Exchange/Sequenced Packet Exchange.

These protocols (rules that enable computers on a network to communicate with each other) are supported on Mac OS, Windows, and UNIX platforms and can run concurrently on the same cable. Workstations that use other protocols can print through a server that uses one of the protocols mentioned.

When you add the Fiery X3e to a network, it is assumed that a network administrator has already installed a network cabling system and connected workstations and servers.

## Stages of installation on the network

Installation can be performed by a network or printing administrator. The stages of a successful installation are:

- **Physically connecting the Fiery X3e to a functioning network**

Prepare a network node for the Fiery X3e—obtain cable, route it to the location where the Fiery X3e will be installed, and attach the cable to the network interface. For details, see [page 3-8](#).
- **Configuring the network server**

When network servers are required, you need to configure those servers to provide client access to the Fiery X3e as a PCL or PostScript printer. For information on configuring network servers in Windows and UNIX network environments, see [Chapter 2](#).
- **Setting up the Fiery X3e**

Configure the Fiery X3e for your particular printing and network environment. First read [Chapter 2](#), and then see subsequent chapters for details.
- **Preparing client workstations for printing**

Install the files needed for printing, install additional user software, and connect the client to the Fiery X3e over the network. These steps are described in the *User Software Installation Guide*, and some information is also provided in [Chapter 2](#).
- **Administering the Fiery X3e**

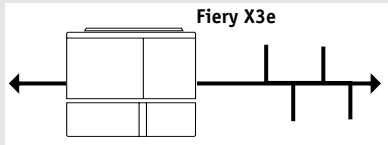
Monitor and maintain system performance and troubleshoot problems that arise. For details, see [Chapter 7](#) of this manual and the *Job Management Guide*.

# 1

## 1-3 Stages of installation on the network

### Summary of Fiery X3e network installation

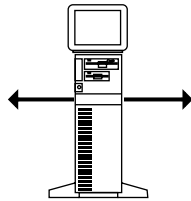
#### CONNECTION



Prepare a network node. Connect the Fiery X3e to the network. If you use a computer running Command WorkStation software, connect it to the network.

#### SERVER CONFIGURATION

##### Network server

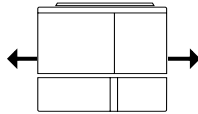


Configure UNIX, Windows NT 4.0/2000, and IPX (Novell) servers to specify Fiery X3e print queues and Fiery X3e users.

No special configuration of AppleShare servers is required.

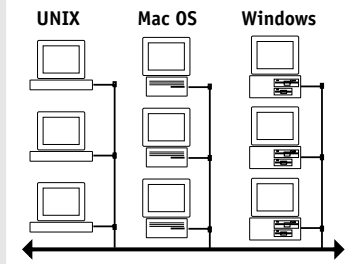
#### FIERY X3E SETUP

##### Fiery X3e



On the Fiery X3e Control Panel, configure, at a minimum, the Server Setup, Network Setup, and Printer Setup. Configure the remaining Setups.

#### CLIENT SETUP



At each computer from which users print to the Fiery X3e:

- Install the appropriate printer files and connect to one or more queues.
- Install Fiery® utilities and an Internet browser for those computers that will use them.
- Verify the Fiery X3e in the list of printers and run a test print.



Fiery X3e available on the network

## Quick path to installation

The diagrams on the following pages show typical systems you can use to print and run Fiery software from remote workstations. Find the page with your preferred platform and network type, and then look up the setup procedures referenced in the “Key to setup” in the upper-left corner of each diagram.

The diagrams describe devices that use the supported networking protocols. They are logical diagrams and are not intended to describe the physical arrangement (topology) of devices on the network. A variety of physical arrangements is possible with each logical arrangement. For example, twisted pair Ethernet networks commonly use a star configuration around a hub, rather than a bus arrangement. The design of physical networks is beyond the scope of this manual.

If your network uses more than one protocol or more than one type of workstation, combine the setups listed for each component of your system. Multiple protocols (shown in the diagrams as parallel lines) can run on the same cable. A solid connection from the Fiery X3e with an arrow indicates that other supported network types can be operational at the same time.

The protocols used in these diagrams are indicated as follows:



# 1

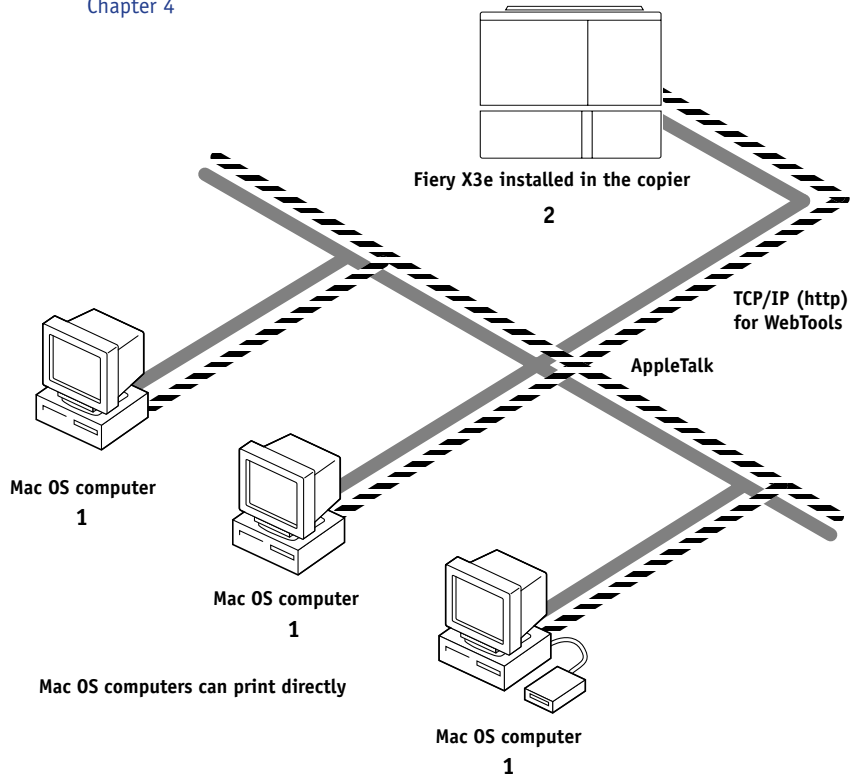
## 1-5 Quick path to installation

### Mac OS environment with AppleTalk

#### Key to setup:

- 1 Mac OS computer
- 2 Fiery Setup

*User Software Installation Guide*  
Chapter 4



#### Printing on this network

Mac OS computers can print directly using the AppleTalk protocol.

#### For using Fiery Utilities

Fiery utilities can be used with the AppleTalk protocol. To use ColorWise Pro Tools and Fiery Link™, TCP/IP is required.

#### For using Fiery WebTools

A Mac OS computer with TCP/IP (http) loaded.

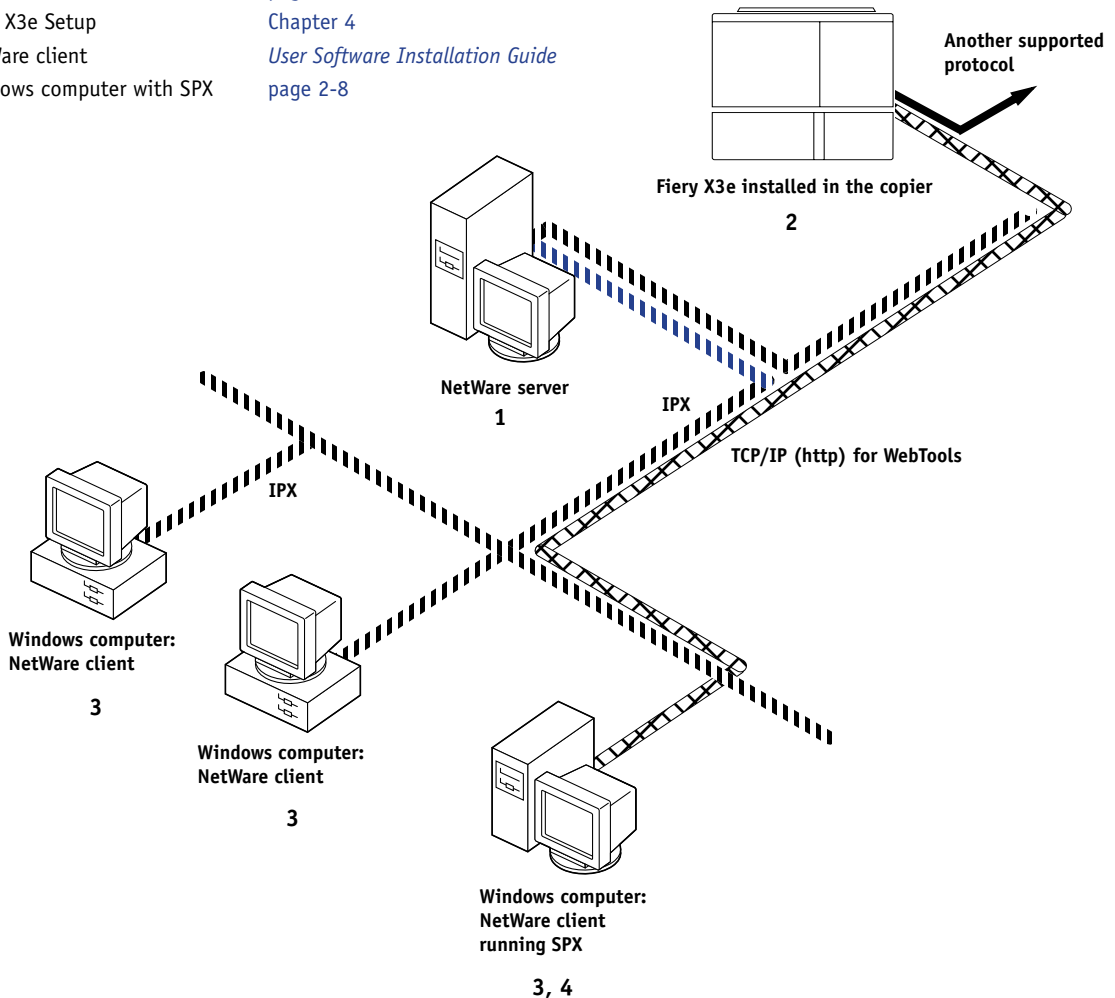


# 1

## Windows computers in a Novell environment

### Key to setup:

- 1 NetWare server [page 2-13](#)
- 2 Fiery X3e Setup [Chapter 4](#)
- 3 NetWare client [User Software Installation Guide](#)
- 4 Windows computer with SPX [page 2-8](#)



IPX protocol



SPX protocol (TCP/IP or AppleTalk possible)

### Printing on this network

All Windows computers can print through the NetWare server.

### For using Fiery WebTools

A Windows computer with TCP/IP (http) loaded.

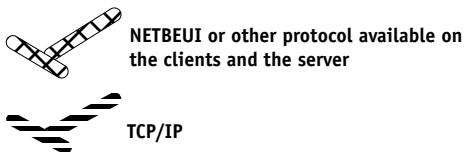
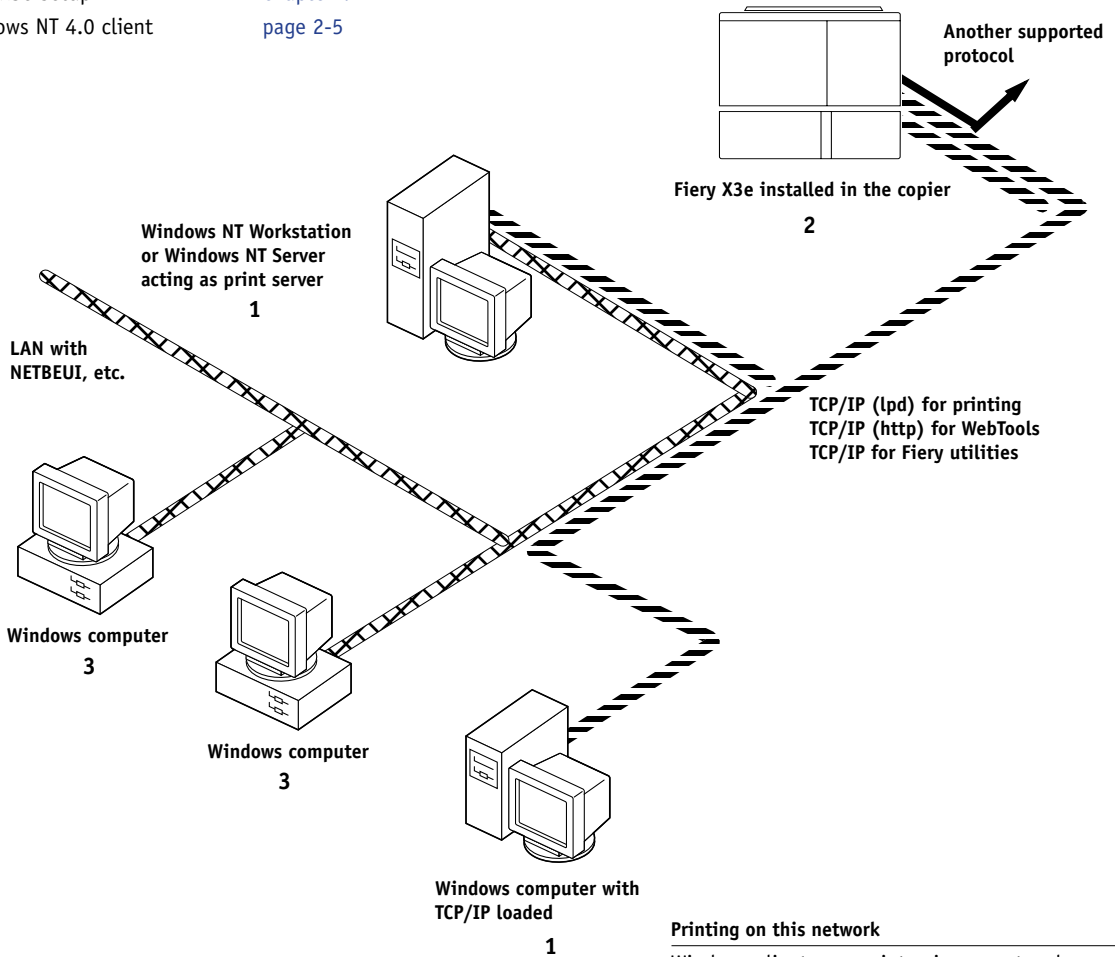
# 1

## 1-7 Quick path to installation

### Windows NT 4.0/2000 Server environment

#### Key to setup:

- 1 Windows NT 4.0 Server [page 2-3](#)
- 2 Fiery X3e Setup [Chapter 4](#)
- 3 Windows NT 4.0 client [page 2-5](#)



#### Printing on this network

Windows clients can print using a protocol available on the Windows NT 4.0/2000 print server.

Windows computers can print using TCP/IP with the lpd protocol.

#### For running Fiery utilities and Fiery WebTools

A Windows computer with TCP/IP loaded.

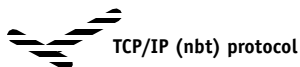
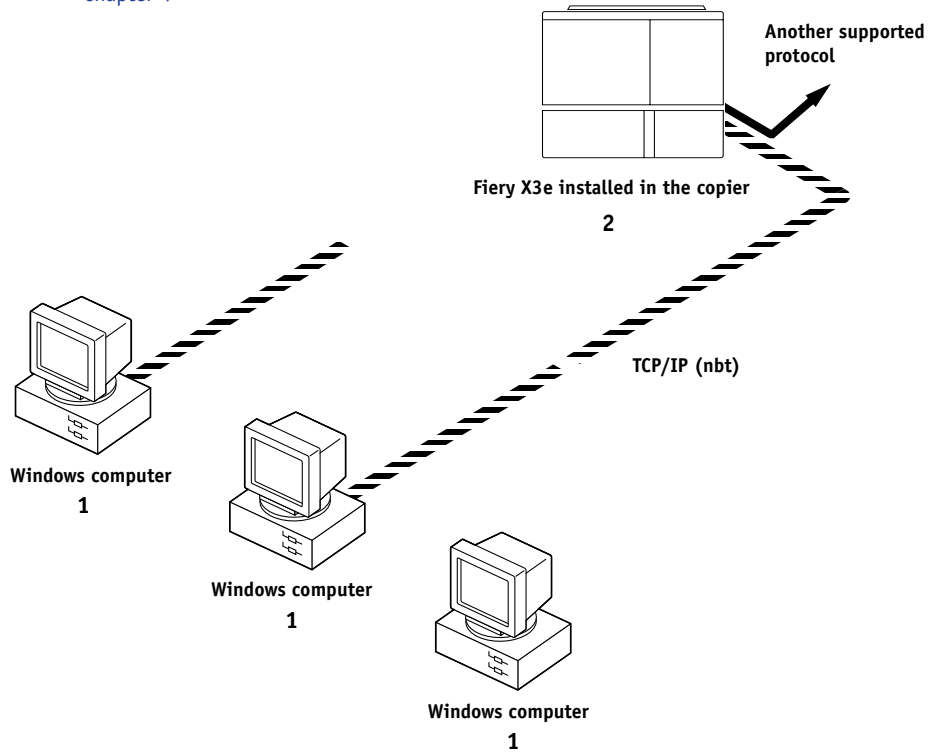
# 1

## Windows computers using Windows printing

### Key to setup:

- 1 Windows computer
- 2 Fiery X3e Setup

*User Software Installation Guide*  
Chapter 4



### For Windows printing

Windows (SMB) printing enabled on the Fiery X3e.

Windows NetBios and TCP/IP enabled on the computer.

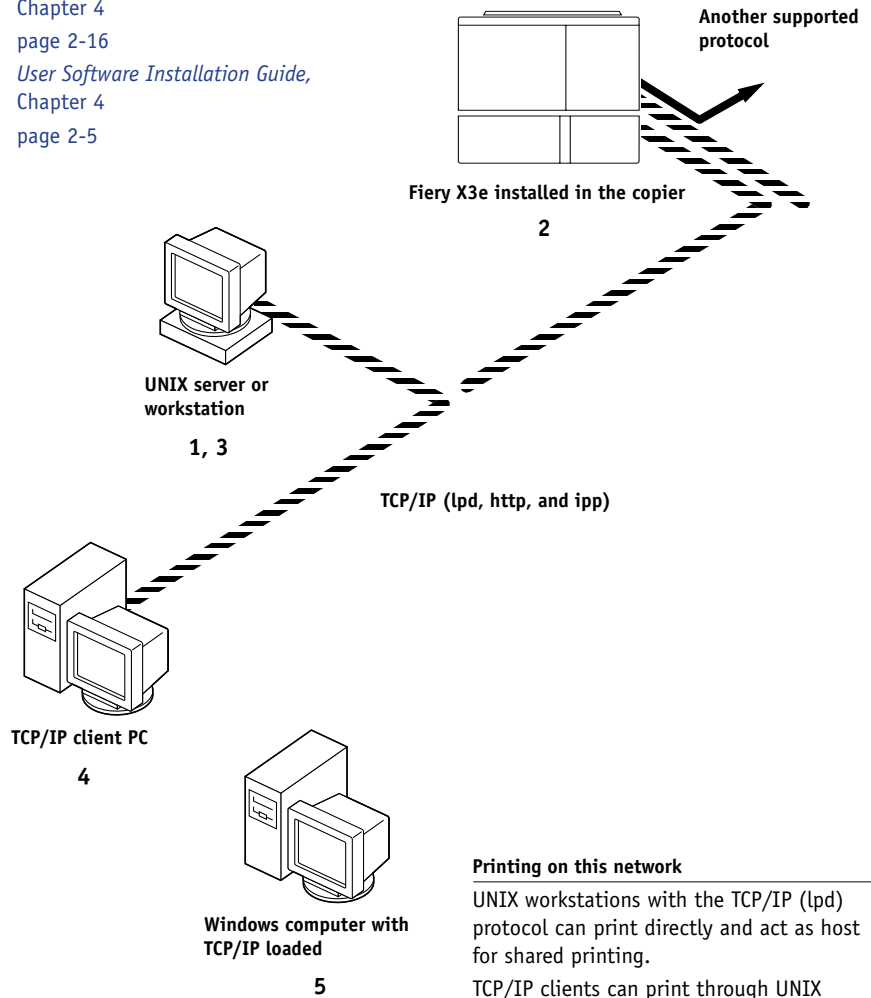
# 1

## 1-9 Quick path to installation

### UNIX workstations and Windows computers on a TCP/IP network

#### Key to setup:

- 1 UNIX server/host [page 2-16](#)
- 2 Fiery X3e Setup [Chapter 4](#)
- 3 UNIX workstation [page 2-16](#)
- 4 TCP/IP client [User Software Installation Guide, Chapter 4](#)
- 5 Windows NT 4.0 client [page 2-5](#)



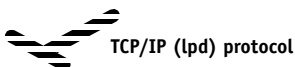
#### Printing on this network

UNIX workstations with the TCP/IP (lpd) protocol can print directly and act as host for shared printing.

TCP/IP clients can print through UNIX server or directly; requires TCP/IP and the lpr print service loaded.

#### For running Fiery utilities and Fiery WebTools

Windows computers with TCP/IP loaded can use these applications.



# 1

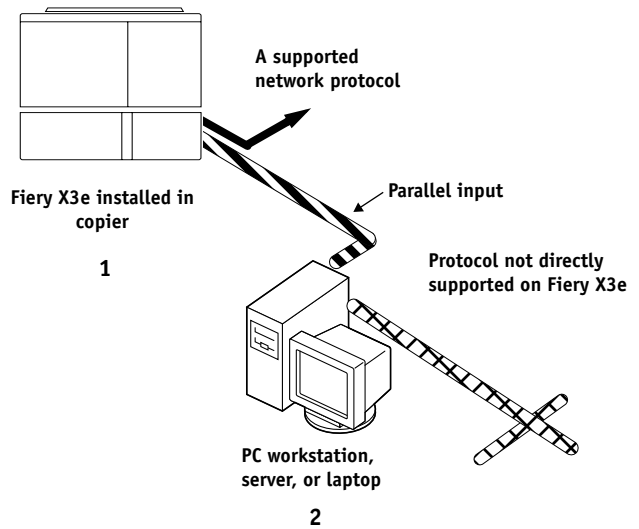
## Fiery X3e parallel port connection

### Key to setup:

- 1 Fiery X3e Setup
- 2 Windows computer

[Chapter 4](#)  
[Printing Guide](#)

With the parallel port enabled, the Fiery X3e can accept and print jobs sent to its parallel port



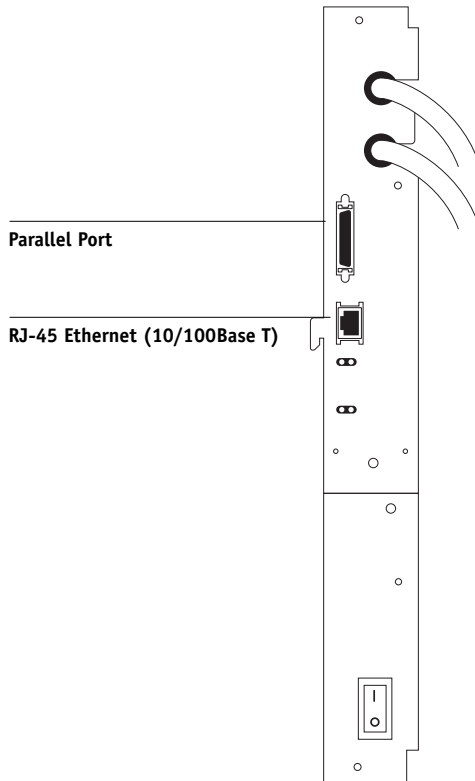
# 1

## 1-11 Connecting network cable to the Fiery X3e

### Connecting network cable to the Fiery X3e

In this section, the back panel of the Fiery X3e is illustrated, followed by information for connecting to the Ethernet board.

#### Back view of the Fiery X3e



## Ethernet connection

For Ethernet connections, the Fiery X3e supports cabling, defined as Category 5 for use with 100BaseT; or as Category 3, Category 4, or Category 5 for use with 10BaseT. The cable uses an 8-pin RJ-45 connector that plugs into the RJ-45 socket on the Fiery X3e.

**NOTE:** The 100BaseT type supported by the Fiery X3e is 100BaseTX, also known as Fast Ethernet. If an Ethernet hub is used, it must be a 100BaseTX hub. The term “100BaseT” is used to refer to 100BaseTX.

---

### TO CONNECT TO THE ETHERNET BOARD

- **Connect the network cable to the RJ-45 connector on the back of the Fiery X3e.**  
You must use a Category 5 unshielded twisted pair cable network cable for 100BaseT.

## Parallel cable connection

In addition to receiving print jobs over Ethernet or Token Ring, the Fiery X3e can accept print jobs from a Windows computer through its high-speed parallel port. This connection is advantageous for portable computers and for workstations on dedicated networks using protocols other than AppleTalk, TCP/IP, or IPX.

The parallel port connection can be active at the same time as the network ports.

**NOTE:** The parallel port cannot be used to connect the Fiery X3e with Command WorkStation or other Fiery utilities.

---

### TO USE PARALLEL CABLE

1. **With the Fiery X3e and the Windows computer turned off, attach the parallel cable to the parallel port of the Fiery X3e.**  
For the location of the parallel port, see the illustration on [page 1-10](#).
2. **Connect the other end of the cable to the parallel port on the Windows computer.**
3. **Turn on the computer and the Fiery X3e.**
4. **Proceed to Setup.**

## Chapter 2: Setting up Network Servers

This chapter describes environments that typically include one or more network servers—Novell NetWare servers and Windows NT 4.0/2000 servers—that share printing to the Fiery X3e. It describes setting up servers that use IPX/SPX or TCP/IP protocols for communicating with the Fiery X3e. In addition, it includes guidelines for setting up direct communication from Windows NT 4.0/2000/XP workstations or UNIX workstations, where a network server is optional. This chapter also outlines the requirements for users to print to the Fiery X3e and run Fiery utilities and Fiery WebTools.

The Fiery X3e can accept jobs concurrently from NetWare, Windows NT 4.0/2000, and AppleShare servers, as well as jobs sent directly from Windows NT 4.0/2000/XP or UNIX workstations. Because AppleShare servers require no special configuration, they are not discussed in this chapter, except for use in a Windows NT 4.0/2000 environment (see “[Fiery X3e on a TCP/IP network with Windows NT 4.0/2000/XP](#)” in the following section).

If your network is based on Windows NT 4.0/2000, proceed to the following section. For information on UNIX workstations, proceed to [page 2-16](#).

### Fiery X3e on a TCP/IP network with Windows NT 4.0/2000/XP

When a Windows NT 4.0/2000/XP computer is configured to connect to the Fiery X3e using TCP/IP, it can print directly to the Fiery X3e. If the computer shares the printer over the network, it is acting as a print server to Windows 9x/Me and Windows NT 4.0/2000/XP clients. Client computers print to the Fiery X3e by printing to the Windows NT 4.0/2000 print server. You can then monitor and control printing at the Windows NT 4.0/2000 server computer.

Typical system combinations are:

- Print server running Windows NT 4.0/2000 Server; clients running Windows NT 4.0/2000/XP Workstation and Windows 9x/Me
- Print server running Windows NT 4.0/2000/XP Workstation and clients running Windows 9x/Me

With TCP/IP protocols loaded, you can run Fiery utilities and WebTools from a Windows computer.

The Windows NT 4.0/2000 server can also use AppleTalk protocols to print to the Fiery X3e as an alternative to TCP/IP.

**NOTE:** When you create a printer to share with AppleTalk users, do not “capture” the printer. Capturing the printer forces all users to print to the server, rather than directly to the printer. If you capture the printer, Fiery X3e print connections will not appear in the Mac OS Chooser.

### Tips for experts—Windows NT 4.0/2000/XP with TCP/IP

Setting up printing from Windows NT 4.0/2000/XP using TCP/IP protocols is similar to setting up UNIX workstations with TCP/IP. When TCP/IP network connections are made from Windows NT 4.0/2000/XP workstations, note the following:

- **Make sure you have a valid IP address for the Fiery X3e and any workstations that will print to it or run the Fiery utilities.**
- **In Fiery X3e Setup, enable TCP/IP and enter the IP address, subnet mask, and gateway address for the Fiery X3e.**

You can enter these addresses manually or use DHCP or BOOTP protocols to assign them dynamically.

- **Make sure the Fiery X3e name and address are listed in a domain name server (DNS) or hosts name database used by your system.**
- **Make sure the system host table includes the correct internal name for the Fiery X3e as a remote printer.**

For more information, see [page 2-17](#).

- **For Windows NT 4.0/2000/XP, install the appropriate printer driver files (PCL or PostScript) on the Windows NT 4.0/2000 server.**

For more information, see the *User Software Installation Guide*.

- **Repeat the installation for all users who print to the Fiery X3e.**

Each server and workstation running the Fiery utilities with TCP/IP also needs the TCP/IP protocol and the Fiery utility software.

## Configuring a Windows NT 4.0/2000 server to communicate with the Fiery X3e

To configure a Windows NT 4.0/2000 server to communicate with the Fiery X3e, follow these general steps. More detail is provided in subsequent sections in this chapter and in your Microsoft documentation.

- **Load the TCP/IP network protocol on the server and configure it with an IP address, subnet mask, and gateway.**
- **Enter the host name of the Fiery X3e in the host database used by your system (see [page 2-4](#)).**
- **Perform Fiery X3e Setup.**
- **On the Windows NT 4.0/2000 server, create a printer for each Fiery X3e print connection, install the appropriate printer drivers, and (optionally) share the printer on the network (see [page 2-4](#)).**
- **Enter the host name and remote printer name of the Fiery X3e in the printer connection. For more information, see [page 2-17](#).**
- **If the Windows NT 4.0/2000 server is also a workstation, install Fiery utilities (see the [User Software Installation Guide](#)).**

### Adding the Fiery X3e to the TCP/IP network

If your TCP/IP network consists of Windows NT 4.0/2000 servers, and Windows NT 4.0/2000/XP clients, follow the procedures in this section. If the network also includes UNIX workstations, see the procedures on [page 2-17](#).

---

**TO ADD THE FIERY X3E TO A TCP/IP NETWORK  
WITH A WINDOWS NT 4.0/2000 SERVER****1. Register the IP address of the Fiery X3e in the host name database used by your system.**

For installations that do not have a network administrator or central host name database, add the Fiery X3e to the hosts file on the Windows NT 4.0/2000 server. Also add it to the hosts file on any workstations that have TCP/IP loaded and will use the Fiery utilities.

The Windows NT 4.0/2000 hosts file provides compatibility with the UNIX hosts file. The hosts file is used as a local Domain Name Services (DNS) equivalent. It has the same format as the `/etc/hosts` file on UNIX servers. The format of the hosts entry is:

IP Address<TAB>host name<TAB>#comments

where <TAB> indicates that you press the Tab key.

To determine the IP address and server name of your system, print a Configuration page (see page [page 7-8](#)).

**NOTE:** If the Fiery X3e has already been defined in an `/etc/hosts` file or equivalent host name database on a UNIX workstation on your network, we recommend you use the same host name here as you used for the name of the remote printer in the `/etc/printcap` file.

**2. Perform Fiery X3e Setup to support TCP/IP printing.**

Enter the options in Protocol Setup (IP address of the Fiery X3e, subnet mask, and gateway address).

**Installing the Fiery X3e as a shared printer**

The first step in creating a printer is installing the printer driver files, which give your applications access to printer features. You can use the installation instructions in the *User Software Installation Guide* for every workstation that will print directly and independently to the Fiery X3e. However, if you are an administrator running a Windows NT 4.0/2000 server or Windows NT 4.0/2000/XP computer, you can also create a printer and share it with clients on the network. This allows clients who do not have permission to establish an independent network connection to the Fiery X3e to print through the server.

You can specify sharing of the printer during installation of the Fiery X3e printer files. If you have not yet installed the Fiery X3e printer files on the Windows NT 4.0/2000 print server computer, do so now, following the instructions in the *User Software Installation Guide*. During installation, enter the information necessary to share the Fiery X3e.

If you have already installed the Fiery X3e printer files on the computer you are using as a Windows NT 4.0/2000 print server, see your Windows documentation for information about sharing the Fiery X3e.

If more than one Fiery X3e print connection is published (for example, if both the Print queue and the Hold queue are published), you may want to create a printer for each print connection, so you and other users can print to each connection directly. When prompted to specify the printer name, enter a name that indicates the Fiery X3e print connection.

### **Configuring clients of a Windows NT 4.0/2000 server**

Each client of a Windows NT 4.0/2000 server is already using a network protocol to communicate with the server. Each client can print to the Fiery X3e if it has been shared by a Windows NT 4.0/2000 server, or Windows NT 4.0/2000/XP computer. In that case, the client does not have to use the same network protocol to connect to the Windows NT 4.0/2000 server as the server uses to communicate with the Fiery X3e.

---

#### **TO CONNECT AND PRINT TO THE FIERY X3E SHARED BY A WINDOWS NT 4.0 SERVER**

- **For Windows 9x/Me clients: Before printing, double-click the Windows NT 4.0/2000 server icon in the Network Neighborhood window, and then double-click the printer name.**

You are prompted to set up the printer. When you choose to set it up, the Add Printer Wizard dialog box appears. Follow the procedures in the *User Software Installation Guide*.

- **For Windows NT 4.0 Workstation clients: Before printing, connect to the print server computer and select the Fiery X3e. Right-click and choose Open.**

When prompted, click Yes to have Windows set up the printer.

- **For Windows 2000/XP clients: Before printing, install the printer driver with the User Software CD and configure the port.**

After clients have selected the printer, they can choose it from the Print Setup, Page Setup, or Print dialog box of their application. Clients can change printing options for their own job, but printer properties appear dimmed, and unavailable for changing. When a client chooses Print, the job is transmitted to the Windows NT 4.0/2000 print server, and from there to the selected print connection on the Fiery X3e. The job is listed in the Print Manager on the client workstation, and the administrator can track it in the Fiery X3e window in the Print Manager on the Windows NT 4.0/2000 print server.

### **Configuring Windows computers without a Windows NT 4.0 server**

If your network does not have a Windows NT 4.0/2000 server, Windows 9x/Me and Windows NT 4.0/2000/XP workstations can still print to the Fiery X3e. This method of printing is called Windows, or SMB printing. In this type of network environment, computers running Windows 9x/Me and Windows NT 4.0/2000/XP Workstations operate in a peer-to-peer environment and communicate directly with the Fiery X3e when users send print jobs.

Many of the prerequisites for setting up printing through a Windows NT 4.0/2000 server also apply to setting up Windows printing where a server is not present. The prerequisites are summarized in the following list. More details are available in your Microsoft documentation.

- **Print a Configuration page (see [page 7-8](#)).**  
Use the information on this page to determine the current Fiery X3e settings.
- **Load the TCP/IP network protocol on the computer (for Windows 9x/Me, load File and printer sharing for Microsoft Network. For Windows 2000/XP load Client for Microsoft Networks).**
- **Verify the Workgroup name of the computer in the Windows Network control panel.**  
Make sure the Workgroup name is the same as the one listed in Fiery X3e Setup.
- **For Windows 9x/Me, in the File and printer sharing for Microsoft Network Properties dialog box, specify Automatic or Enabled for Browse Master, and select Yes for LM Announce.**

- For Windows 2000/XP, in the Client for Microsoft Networks Properties dialog box, configure the computer to allow file sharing, and then restart the computer.
- Ping the Fiery X3e to verify TCP/IP communication is successful (see [page 2-18](#)).

## Fiery X3e on a NetWare 4.x or 5.x network

The NetWise™ features built into the Fiery X3e support the following network operating environments:

- NetWare 4.x or 5.x—NDS (Novell Directory Services)
- Servers running NetWare 4.x or 5.x in bindery emulation mode

For Ethernet-based networks, the IPX/SPX protocol is supported.

**NOTE:** Setting up a NetWare environment correctly requires the presence and active cooperation of the Novell network administrator. You must have administrator privileges on the network to create new NDS or bindery objects.

The term “bindery server” is used to refer to a Novell file server running NetWare 4.x or 5.x in emulation mode. The term “NDS” is used to describe components of a NetWare operating system running NetWare 4.x or 5.x in native mode.

NetWare clients print to the Fiery X3e through the Novell network server. Server setup and client network setup are outlined in this chapter, client printing setup is described in the *User Software Installation Guide*, and printing is described in the *Printing Guide*.

The Fiery X3e can receive print jobs from NetWare clients over Ethernet network topologies. During Fiery X3e Setup, you select the frame type or types that will be used for communication between the Fiery X3e and network servers. Frame type refers to the format of a communications packet; frame types are specified in a startup file when the NetWare server (or any other workstation) loads its network drivers.

## Tips for experts—IPX networks

Setting up the Fiery X3e is similar to setting up any other PostScript printer on the network.

The Fiery X3e with IPX connections has the following characteristics:

- **A minimum connection to the Fiery X3e consists of a NetWare file server, a NetWare print server, and a NetWare queue.**
- **A single directory tree and up to eight bindery servers can be configured simultaneously.**
- **The Fiery X3e looks for print jobs on one NetWare print server per bindery server.**
- **Each print server can store jobs for any print connection on the Fiery X3e.**

## Overview of IPX printing to the Fiery X3e

NetWare file servers support the creation of print queues, which are storage areas for print jobs. When a client on a remote computer decides to print, the job is directed to a print queue on the NetWare file server and spooled to the NetWare server disk, freeing up the client workstation.

You must give the NetWare queue names a specific extension corresponding to the Fiery X3e print connection, as follows:

\_print  
\_hold  
\_direct

**NOTE:** These extension names must be in English and in all lowercase letters.

You do not need to rerun Setup when you add or remove a NetWare queue; however, you should restart the Fiery X3e after you create or remove a queue.

When the Fiery X3e is configured to connect to a NetWare server, it polls the NetWare server for jobs in each of its queues. If jobs are found, they are automatically transferred over the network to the matching connection on the Fiery X3e. For example, jobs from the NetWare queue with the `_print` extension are sent to the Fiery X3e Print queue. While a job is processed and printed, a record of the job is being created. You can access the Job Log containing these records at any time.

## Configuring a NetWare 4.x server for printing

The following sections explain how to set up a NetWare file server so networked users can print to the Fiery X3e from their workstations, and the Fiery X3e can obtain print jobs from the NetWare server.

For *each* NetWare file server that you configure, follow these general steps. More detail is provided in subsequent sections and in your NetWare documentation.

- Make sure the server is connected to a functioning IPX network.
- Log in as the Supervisor on a PC connected to the NetWare file server.
- For NetWare 4.x installations, set up an NDS connection (see [page 2-11](#)).
- For NetWare 4.x in emulation mode, set the bindery context (see [page 2-11](#)).
- For NetWare 4.x in bindery emulation, set up a file server, print server, and print queue for the Fiery X3e (see [page 2-12](#)).

With bindery services, you can route all Fiery X3e print jobs through the same NetWare file server, or you can configure more than one file server to handle Fiery X3e jobs.

The functions you perform on the Novell server, the Fiery X3e, and the client workstation are summarized in the following tables. The first table applies to NDS connections, and the second to bindery connections. Complete the operations in the left column, then the center column, then the right column.

### Configuring an NDS connection

#### Abbreviations:

FS = file server

PS = print server

PQ = print queue (on the NetWare server)

On NDS FS	In Setup from Command WorkStation	On client workstation
<p><b>In NETADMIN:</b></p> <p>Create NDS PQs</p> <p>Create NDS printer and assign PQs</p> <p>Create PS and assign the printer</p> <p>Configure users of the PQs</p>	<p><b>Port Setup</b></p> <p>Ethernet Setup</p> <p><b>Protocol Setup</b></p> <p>IPX/SPX Setup—select frame types</p> <p><b>Service Setup</b></p> <p>PServer Setup and NDS Setup</p> <p>Select Root</p> <p>Browse to select PS</p> <p>Specify PQ search root (optional)</p> <p>Set Polling Interval</p>	<p>Install user software.</p> <p>For printing:</p> <p>Connect client to PQs that you set up on the NetWare FS (associated with the PS selected in NDS Setup).</p> <p>For running Fiery utilities:</p> <p>Configure the connection to the Fiery X3e.</p>

### Configuring a bindery connection

On Bindery FS	In Setup from Command WorkStation	On client workstation
<p><b>In PCONSOLE:</b></p> <p>Select NetWare FS (up to 8)</p> <p>For each FS:</p> <p>Configure PS</p> <p>Configure PQ</p> <p>Configure users of the PQ</p>	<p><b>Port Setup</b></p> <p>Ethernet Setup</p> <p><b>Protocol Setup</b></p> <p>IPX/SPX Setup—select frame types</p> <p><b>Service Setup</b></p> <p>PServer Setup and Bindery Setup</p> <p>Add FS (up to 8)</p> <p>Set Polling Interval</p>	<p>Install user software.</p> <p>For printing:</p> <p>Connect client to PQs that you set up on the NetWare FS (associated with the PS selected in Bindery Setup).</p> <p>For running Fiery utilities:</p> <p>Configure the connection to the Fiery X3e.</p>

### Setting up an NDS connection

In NDS, all NetWare entities (objects) are organized in a hierarchical tree structure. Objects have a name, properties, and a context that defines the location of the object in the directory tree. For the Fiery X3e, you are mainly concerned with defining a printer, a print server object, and one or more print queue objects. Objects are created in NetWare administrator programs such as PCONSOLE, NETADMIN, or NetWare Administrator.

The top-level tree object is known as the [Root] object. The name of the [Root] object is also the name of the tree. Below the [Root] are other objects: either containers (which consist of other objects) or leaf objects (which do not contain other objects). Access to objects is controlled by rights that are defined as properties of each object. Rights are established by network administrators.

### Setting the NetWare 4.x bindery context

You can connect only one directory tree to the Fiery X3e. If you need to connect additional NetWare 4.x servers, you can do so by using bindery emulation. You can connect up to eight bindery servers to the Fiery X3e.

**NOTE:** The file server you select must not be in the same tree as the one you selected in NDS Setup.

In order to set up the NetWare 4.x server in bindery emulation mode for printing to the Fiery X3e, the network administrator must do the following:

- Determine the Directory Services path to the container in which the print server and the print queue for the Fiery X3e will be created.

The container defines the “bindery context” for your network structure.

- Edit the network startup file to set the bindery context.
- Activate the new bindery context.

### Setting up a NetWare print queue for bindery

For NetWare 4.x in emulation mode, the NetWare print server and print queue for the Fiery X3e are created and configured from NetWare Print Console (PCONSOLE), a NetWare utility that is stored in the NetWare PUBLIC directory.

As with NDS, you can create several NetWare entities on a Novell server, and then you can select them in Network Setup (see [page 4-17](#)).

### Setting up NetWare Windows clients for printing

Before setting up client workstations for printing, perform Network Setup (see [page 4-7](#)), and verify that the settings reflect the entities you created in the NetWare administrator utilities (see [page 2-9](#)).

**NOTE:** For printing to the Fiery X3e, connect all Windows clients to a NetWare server and permit them to connect to the Netware print server or servers on which you defined a NetWare print queue for the Fiery X3e.

After the Novell server and the Fiery X3e have been set up, client setup consists of:

- Installing the networking protocol, binding it to the network adapter card, and permitting the client to log in to the NetWare file server.

On Windows 9x/Me workstations, loading both the IPX/SPX-compatible protocol and the Client for NetWare Networks from the Network Control Panel.

On Windows NT 4.0/2000/XP workstations, installing Client Services for NetWare. Use the CSNW option in the Control Panel to set printing options and specify a preferred NetWare server.

- Setting up the Fiery X3e as a PostScript printer by installing a PostScript printer driver and the Fiery X3e PPD (PostScript printer description).
- Adding a network port and connecting the workstation to one or more NetWare queues that have been defined for the Fiery X3e.
- Installing Fiery X3e software.

For details, see the *User Software Installation Guide*.

## Fiery X3e on a NetWare 5.x network with NDPS

The Fiery X3e supports printing over a NetWare 5.x network running either the TCP/IP protocols or the IPX protocol. For pure IP printing, the Fiery X3e takes advantage of features in NDPS (Novell Distributed Print Services). For IPX printing, the Fiery X3e supports the PServer service in Bindery emulation or through NDS (Novell Directory Services). For more information on IPX-based printing, see [“Fiery X3e on a NetWare 4.x or 5.x network”](#) on page 2-7.

**NOTE:** Setting up a NetWare environment correctly requires the presence and active cooperation of the Novell network administrator. You must have administrator privileges on the network to create new NDS or bindery objects.

NDPS is not like earlier queue-based versions of NetWare printing. Instead, you use an NDPS Manager and a Printer Agent, which control the tasks previously handled by a print queue, print server, and spooler. You can also make the printer driver available for clients to download from Windows 9x/Me and Windows NT 4.0/2000/XP computers.

During Fiery X3e Setup, you select the frame type or types that will be used for communication between the Fiery X3e and network servers. Frame type refers to the format of a communications packet; frame types are specified in a startup file when the NetWare server (or any other workstation) loads its network drivers.

### Tips for experts—NetWare 5.x networks

Setting up the Fiery X3e in an NDPS environment is similar to setting up any other PostScript printer on the network. Refer to the following information when setting up the Fiery X3e in such an environment:

- **Make sure you have a valid IP address for the Fiery X3e and for any workstations that will print to it or run Fiery utilities.**
- **In Fiery X3e Setup, enable TCP/IP and enter the IP address, subnet mask, and gateway address for Fiery X3e. You can enter these manually or use DHCP or BOOTP protocols to assign the addresses dynamically.**
- **Bidirectional communication features in NDPS are not supported on the Fiery X3e.**

## Configuring a NetWare 5.x server for printing

### Before you begin

The following procedure assumes NDPS has been installed during NetWare 5.x installation and that a Broker is running on the server. Unless you have manually unloaded the Broker, it loads and runs when you install NDPS. Make sure you are using the latest NetWare 5.x service pack and Novell gateway. Finally, create an NDPS Manager. For more information, see your NetWare documentation.

In Fiery X3e Setup, make sure you have enabled TCP/IP (page 4-11) and LPD printing (page 4-17) on the Fiery X3e. You can ping the Fiery X3e (page 2-18) to verify that TCP/IP communication is successful.

### Setting up the Fiery X3e printer driver

You first need to create a directory for Windows NT 4.0/2000/XP or a folder for Windows 9x/Me in the NetWare server for NDPS to install the corresponding printer driver files from the User Software CD.

---

#### TO SET UP THE PRINTER DRIVER FOR WINDOWS NT 4.0/2000/XP

1. Log on to the Novell file server as a superuser or Administrator.
2. In the `SYS:ndps\resdir\Prndrv\NT4/2000/XP` directory, create a directory called `Fiery`.
3. From the User Software CD, copy the contents of the `ENGLISH\INSTALRS\PS_DRVR\WIN_NT/2000/XP` folder to the `Fiery` directory.

---

#### TO SET UP THE PRINTER DRIVER FOR WINDOWS 9X/ME

1. Log on to the Novell file server as a superuser or Administrator.
2. In the `SYS:ndps\resdir\Prndrv\Win9x/Me` directory, create a folder called `Fiery`.
3. From the User Software CD, copy the contents of the `ENGLISH\INSTALRS\PS_DRVR\WIN_9x/Me` folder to the `Fiery` directory.

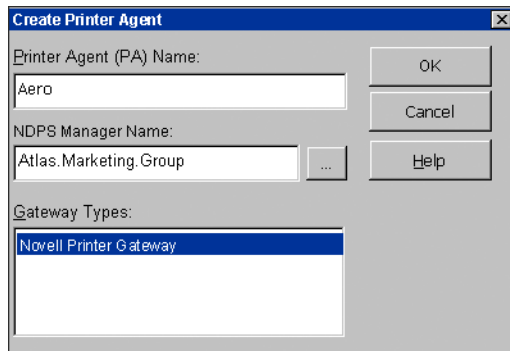
### Setting up the Fiery X3e on a NetWare 5.x network

Depending on the security needs at your organization, you can set up the Fiery X3e as a Public Access printer or a Controlled Access printer. The following procedure describes setting up a Public Access printer. You can then convert the printer to Controlled Access if necessary. For more information, see your NetWare documentation.

---

#### TO SET UP THE FIERY X3E AS A PUBLIC ACCESS PRINTER

1. In **NetWare Administrator**, double-click the **NDPS Manager** object you created.
2. In the **Details** window for the **NDPS Manager** object, click **Printer Agent List**.  
The list of Printer Agents appears.
3. Click **New**.
4. In the **Printer Agent (PA) Name** field, type a name.



5. Under **Gateway Types**, select **Novell Printer Gateway**, and click **OK**.
6. In the **Configure Novell PDS for Printer Agent** dialog box, select “((NONE))”, and click **OK**.
7. In the **Configure Port Handler** dialog box, choose “Remote LPR on IP” as the connection type, and click **Next**.
8. For **Host Address**, enter the IP address of the Fiery X3e.

9. **For Printer Name, enter the name of the Fiery X3e print connection you want users to print to, and click Finish.**

This name must be either print or hold.

10. **In the Select Printer Drivers dialog box, select the printer driver for Windows 9x/Me and the driver for Windows NT 4.0/2000/XP.**
11. **Click Continue, and then click OK.**

## Fiery X3e on a network with UNIX workstations

When a UNIX workstation is configured with the lpd protocol and connected to the Fiery X3e over a TCP/IP network, it can print directly to the Fiery X3e.

Setting up UNIX workstations requires an administrator with root privileges. After the initial configuration, UNIX users simply submit print jobs to a named printer.

The job management tools, along with the other Fiery utilities and Fiery WebTools, are unavailable on the UNIX platform. A Windows or Mac OS computer on the same network as the UNIX computer that is set up to use TCP/IP for printing to the Fiery X3e can use the job management tools to manage print jobs that originate from all workstations on the network.

### Tips for experts—UNIX workstations

Setting up the Fiery X3e in a UNIX environment has the same requirements as setting up any printer or new device:

- **A distinct IP address is required for the Fiery X3e as well as for each workstation on the network.**
- **A name must be selected for the Fiery X3e that goes with the IP address.**
- **The IP address of the Fiery X3e must be registered for the network in a host database, and also on the Fiery X3e itself.**
- **At least one print connection (Print or Hold) must be published.**

The following information applies especially to the Fiery X3e:

- **The Fiery X3e is a printer controller that understands lpd protocols.**
- **The Fiery X3e has a remote printer name you must use in order to communicate with it successfully.**

For details, see the following section.

### **Important note about the remote printer name**

Whichever UNIX system you use, the name used for the remote printer (or `rp` in the `/etc/printcap` file) in configuring the Fiery X3e must be one of the following:

`print`  
`hold`

The remote printer name is also used when setting up your Windows NT 4.0/2000 Server or Windows NT 4.0/2000/XP Workstation to connect to the Fiery X3e over TCP/IP. Enter the remote printer name when you set up your Windows NT 4.0/2000 printer, as the “Name of printer or print queue on that (lpd host) server” in the Add LPR Compatible Printer dialog box.

For the Windows 2000/XP printer driver, enter the remote printer name for Queue Name under LPR Settings in the Configure Standard TCP/IP Port Monitor dialog box.

### **Setting up the Fiery X3e on TCP/IP networks**

Every machine (host) on a TCP/IP network, including the Fiery X3e, must have a unique 32-bit internet address (IP address). Contact your network administrator to obtain an address for the Fiery X3e. Workstations on a TCP/IP network can print directly to the Fiery X3e as a remote printer, or can print to a Windows NT 4.0/2000 server or UNIX workstation acting as a print server. Since the Fiery X3e spools jobs and acts as a print server, there is no advantage in placing another print server between a workstation and the Fiery X3e. If you choose to do so, however, there is no difference in setup except that a client machine does not have its own spooling area.

**TO SET UP FIERY X3E PRINTING ON UNIX SYSTEMS****1. Specify the appropriate settings in Fiery X3e Server Setup.**

To access Fiery X3e Setup, see [page 4-3](#).

**2. Specify the appropriate settings in Fiery X3e Network Setup.**

Enter a valid IP address, subnet mask, and gateway address for the Fiery X3e.

**3. Specify the appropriate settings in Fiery X3e Printer Setup.**

Publish the Print queue and/or Hold queue.

---

**TO SET UP TCP/IP FOR COMMUNICATION WITH THE FIERY X3E**

- 1. A superuser (with root login) must add the Fiery X3e to the network's IP host table or other system database of network printers.**
- 2. In the file or utility used by your network, specify the remote printer name, the print server protocol, the queue, and the spool file for the Fiery X3e name you assigned.**
- 3. Make the Fiery X3e available as a printer to other network users.**
- 4. To verify the TCP/IP connection, ping the IP address or the host name. From any computer on the network, at the command prompt, type:**

```
ping <IP address>
```

Type the Fiery X3e IP address assigned in Fiery X3e Network Setup.

After the Fiery X3e is set up as a network printer, you can also ping the name you gave to the Fiery X3e:

```
ping <hostname>
```

The server should respond with a message such as:

```
Reply from <IP address> ...
```

Some systems will respond with a continuous display of output from the IP address. To stop the output, type Control-C. You can use the ping command at any time.

---

## TO PRINT TO THE FIERY X3E

- On a UNIX system running SunOS 4.x or other BSD-based variant, use the `lpr` command to send a job to the Fiery X3e.
- On a UNIX system running Solaris 2.x or any System V implementation of UNIX, use the `lp` command to send a job to the Fiery X3e.
- Windows NT 4.0/2000/XP users with the TCP/IP protocol loaded can send print jobs to the Fiery X3e from their applications or from a command prompt.

When Windows NT 4.0/2000/XP users print from applications, they can set print options with the driver but not from the UNIX command line.

### Managing print jobs

UNIX network administrators can use UNIX utilities for viewing the list of jobs, and for printing and removing jobs that are spooled on UNIX servers. If the network includes a Windows NT 4.0/2000/XP workstation that has TCP/IP protocols loaded, you can use Command WorkStation or Fiery Downloader™ to download fonts and files.

You can also use the job management tools to manage jobs from remote workstations. For more information, see the *Job Management Guide*.

Even without the Fiery utilities, you can:

- Set up the Fiery X3e to print a log of printed jobs automatically after every 55 jobs (see Job Log Setup on [page 4-48](#)).
- Print a Job Log manually at any time from the Command WorkStation Functions menu (see the *Job Management Guide*).



## Chapter 3: Preparing for Fiery X3e Setup

To prepare for printing at your site, you must do some initial Fiery X3e configuration, or Setup, to specify the network environment and the kind of printing you will do. Before you perform Setup, you must decide the levels of access you will implement for your site. Administrators and operators must also understand how Fiery X3e system software is structured in order to configure and use the Fiery X3e system correctly.

### Levels of access and control

When you configure the Fiery X3e during Setup, you (as system administrator) implement a particular level of control by enabling or not enabling print connections, passwords, and access to WebTools. The level of control you implement can range from minimum to moderate to maximum—or none at all.

- Minimum control might be appropriate for a small site where anyone on the local network can control all printing and Fiery X3e functions. Although there may be an administrator or operator charged with certain duties, all users have equal access to the system and job management tools.
- Maximum control might be appropriate for a high-volume printing environment where an administrator or operator controls the job flow and all printing; jobs sent by users are spooled (stored) to the Fiery X3e disk until the operator decides it is time to print them. In addition, only the administrator and operator have access to job management tools. This is the recommended level of control.

**NOTE:** The term “job management tools” is used in this manual to refer to Command WorkStation, Fiery Spooler™, and Fiery WebSpooler™.

### Fiery X3e print connections

The Fiery X3e supports three print connections: Hold queue, Print queue, and Direct connection. These print connections can be enabled, or “published,” to users on the network when you configure Printer Setup. All published connections are constantly checked for the presence of jobs. The Print queue and Direct connection give remote users more direct access to the Fiery X3e than the Hold queue. Therefore, do not publish the Print queue and the Direct connection in environments where maximum control is desired.

In addition, you can enable the Printed queue, which is a storage area for the most recent jobs from the Print queue. The Printed queue makes it convenient to reprint those jobs. In Setup, you can enable the Printed queue and specify the maximum number of jobs retained in the queue (see [page 4-6](#)). Reprinting jobs in the Printed queue requires the job management tools.

To use the Fiery utilities and WebTools, you must enable at least one of the print connections.

### Hold queue

Jobs sent to the Hold queue are spooled to the Fiery X3e hard disk for printing at a later time or for reprinting. Because the Hold queue is a storage place, jobs sent to it cannot proceed through the printing process until the operator intervenes using the job management tools (see the *Job Management Guide*).

### Print queue

This is the standard Fiery X3e queue. Jobs sent to the Print queue are processed and printed in the order they are received. Jobs prioritized by an operator with the job management tools and jobs sent via the Direct connection can take priority over jobs sent to the Print queue.

### Direct connection

The Direct connection transmits jobs directly to the Fiery X3e, but only when the Fiery X3e is Idle. If the Fiery X3e is busy, the job remains at the user workstation until the Fiery X3e is ready. The job is then processed as soon as the previous job is finished and before the next queued job is processed.

**NOTE:** The Direct connection is not supported for LPR printing.

Jobs sent to the Direct connection are not stored on the Fiery X3e hard disk, and cannot be selected for reprinting, moving, or deletion. Therefore, the Direct connection provides a measure of security for sensitive files. Jobs sent to the Direct connection *do* appear in the Job Log, for accounting purposes.

**NOTE:** To download fonts to the Fiery X3e, you must publish the Direct connection.

## Passwords

You can implement passwords as a means of controlling access to Fiery X3e functions. The Fiery X3e allows you to set the following passwords in Setup:

- Administrator—remotely from WebSetup or Command WorkStation, or locally from the Control Pane
- Operator—from Command WorkStation or Fiery WebSetup

**NOTE:** By default, *no* passwords are set on the Fiery X3e. If you do not specifically set passwords, all users will have administrator privileges, which include access to important functions such as Setup (including setting passwords), and job control. We *strongly recommend* that you set *at least* an Administrator password to protect the Fiery X3e from random or accidental changes to Setup.

## Administrator privileges

Administrator control, which confers control of Setup, is the highest level of control, since the person who has access to Setup can control the printing and job management environment. Administrator privileges include publishing print connections, setting passwords, deleting fonts, controlling print jobs from the job management tools, overriding job settings, clearing the Fiery X3e of all job data, performing calibration, defining default color profiles, and setting default values for print options.

When performing a function from the Fiery X3e Control Panel that prompts you for the Administrator password, you must enter it promptly. Otherwise, the Fiery X3e Control Panel returns to Idle, and you must start over again.

## Operator privileges

Operator control includes control of print jobs from the job management tools, including the ability to override job settings.

## Guest privileges (no password)

No password is needed for a user to log in as a Guest from the job management tools. A Guest can view the status of active jobs but cannot make changes to jobs or to the Fiery X3e state.

## WebTools

The Fiery X3e supports Internet or intranet access with WebTools from Windows and Mac OS computers. To enable use of WebTools, you must do the following in Setup:

- Enable TCP/IP.
- Set an IP address, subnet mask, and gateway address for the Fiery X3e.
- Enable Web Services.

For more information, see [Chapter 6](#).

You can set passwords to control access to WebTools features. If you do not specifically set these passwords, all users have access to all WebTools functions (see [page 3-3](#)).

WebTools include Status™, WebSpooler, WebLink™, WebScan™, WebDownloader™, WebSetup™, and Installer™.

## Status

The Status WebTool provides you with current information on the jobs processing and printing on the Fiery X3e. It is not affected by passwords. For more information, see the *Printing Guide*.

## WebSpooler

The WebSpooler interface is very similar to that of Command WorkStation. It allows remote users to preview, manipulate, reorder, reprint, and delete jobs currently spooling, processing, or printing on the Fiery X3e. It also allows the administrator and operator to edit and merge jobs (Thumbnails A and B) and view, print, or delete the Job Log.

WebSpooler access can be controlled by setting an Operator password in Setup. If you set a password, only users with that password can manipulate jobs from WebSpooler. A user who does not have the password can still log in to WebSpooler as a Guest with view-only access (see [page 3-3](#)). For more information, see the *Job Management Guide*.

### WebLink

WebLink provides all users with a link to an address on the Internet. To change the WebLink Internet address, see [page 6-3](#). This function requires the Administrator password, if one has been set (see “[Passwords](#)” on [page 3-3](#)).

**NOTE:** If you do not set the Administrator password, any user can change the WebLink address, which affects all users. For this reason, we *strongly recommend* that you set an Administrator password.

### WebScan

With WebScan, you can retrieve scanned documents from a computer on the Internet or your organization’s intranet. It is not affected by passwords. For more information, see the *Printing Guide*.

### WebDownloader

WebDownloader allows you to print PostScript, EPS, PDF, and TIFF files directly to the Fiery X3e without first opening the file in an application. It is not affected by passwords.

### WebSetup

WebSetup allows you to view and modify Fiery X3e Setup options from a remote workstation. This function requires an Administrator password. For more information, see [Chapter 5](#).

**NOTE:** WebSetup is supported on Windows computers only.

### Installer

The Installer WebTool allows users to download installers for printer drivers directly from the Fiery X3e. It is not affected by passwords. For more information, see the *User Software Installation Guide*.

## Control level scenarios

Typical scenarios of access and control, ranging from minimum control to maximum control, are described in this section. Choose the scenario that best matches your site requirements, and refer to the corresponding number in the following table for guidance on how to configure your system for those requirements.

**NOTE:** *We strongly recommend* that you set *at least* an Administrator password to prevent unauthorized changes to system settings.

### 1. No designated administrator or operator (Minimum control—*not recommended*)

All users have equal access to all system functions including Setup, clearing the Fiery X3e, deleting printer fonts, setting the WebLink address, performing calibration, printing to all Fiery X3e print connections, and managing all jobs from the job management tools.

### 2. An administrator but no operator

Only an administrator can perform Setup, calibration, and other administrator functions, but all other system functions are accessible to all users, including printing to all Fiery X3e print connections, and managing all jobs from the job management tools.

### 3. An administrator and an operator

Only an administrator can perform Setup, calibration, and other administrator functions, and only an operator or administrator can control jobs from the job management tools. Users can print to all Fiery X3e print connections.

### 4. An administrator and an operator; no WebTool access

Only an administrator can perform Setup, calibration, and other administrator functions, and only an operator or administrator can control jobs from the job management tools; users can print to the Hold queue and Print queue, but not to the Direct connection; the operator controls all job flow, but jobs sent to the Print queue may not require operator intervention; no access to WebTools.

**5. An administrator and an operator; operator controls all jobs; no WebTool access (Maximum control)**

Only an administrator can perform Setup, calibration, and other administrator functions, and only an operator or administrator can control jobs from the job management tools; users can print only to the Hold queue; the administrator and the operator have complete control of job flow; no access to WebTools.

Use these settings in Setup	1 (Minimum)	2	3	4	5 (Maximum)
Enable Direct connection	√	√	√		
Enable Print queue	√	√	√	√	
Enable Web Services	√	√	√		
Set an Administrator Password ( <i>strongly recommended</i> )		√	√	√	√
Set an Operator password			√	√	√

## About Setup

Setup configures the Fiery X3e to communicate with other devices and manage print jobs. You must perform Setup the first time you turn on the Fiery X3e after new system software is loaded, or any time Server software is reinstalled. An initial Setup using default settings is adequate for allowing users to print to the Fiery X3e and use the WebTools. When your network or user printing environment changes, you can change Setup options accordingly.

The first time you perform Setup, you must use the Fiery X3e Control Panel. Configure, at a minimum, Server Setup, Network Setup, and Printer Setup, in that sequence. After the initial Setup, you can change Setup options from the Control Panel (page 4-2) or Command WorkStation. Most Setup options can be set using any of these methods.

If you do not configure the remaining Setups, the Fiery X3e uses default settings. You need to make settings appropriate for the printing environment at your site.

### Network server setup requirements

For Novell, and Windows NT 4.0/2000 (using TCP/IP) networks, you must configure the network servers for printing to the Fiery X3e *before* you configure Fiery X3e network settings in Setup. For chapter references to information about network server Setup, see the diagrams in [Chapter 1](#).

To configure network settings in Setup, you must have a live network connection, so the Fiery X3e can query the network for zones, servers, and server-based queues.

Whenever the configuration of the Fiery X3e, the copier, or the network itself changes at your site, you can alter individual settings to correspond to the changed environment. Changing network or port settings may require that you make changes to other Setup options, as well.

**NOTE:** You must configure the Fiery X3e with the correct Windows NT/2000 domain name. This is especially important for Windows printing, also known as SMB printing.

**NOTE:** The Fiery X3e does not support the Windows 2000 Active Directory Service. When you use the Fiery X3e in a Windows 2000 server environment, assign the Fiery X3e to a Domain or Workgroup.

### Ensuring the copier connection

Complete the following steps *before* you configure the Fiery X3e and the workstations that will print to the Fiery X3e. A service technician will have performed some initial installation.

---

**TO PREPARE FOR FIERY X3E CONFIGURATION**

1. **Print a copier Test Page to verify the copier is functioning normally.**
2. **Turn off the copier and connect the interface cable from the copier to the Fiery X3e.**
3. **To confirm this connection, turn on the copier and the Fiery X3e, and print a Test Page from the Fiery X3e Control Panel.**

To print a Test Page, press the Menu button on the Control Panel to display the Functions menu. Choose Print Pages, and then choose Test Page.

4. **With both the Fiery X3e turned off, connect the network cable to the Fiery X3e, as described in [Chapter 1](#).**

The network should already be installed and operational.

5. **Turn on the copier and then the Fiery X3e.**

Proceed to Fiery X3e Setup, described in Chapter 4.



## Chapter 4: Performing Setup from the Control Panel

Setup is required the first time the Fiery X3e is turned on after new system software is loaded. In this initial Setup, you (or the service technician who loads the software) choose the language for Fiery X3e Control Panel menus and messages. If you do not configure a particular Setup option, the Fiery X3e uses default settings. Make sure the settings are appropriate for the printing environment at your site.

### Fiery X3e Setup from the Control Panel

Setup performed from the Control Panel configures the Fiery X3e to communicate with other devices and manage print jobs sent to it.

Setup provides these groups of options:

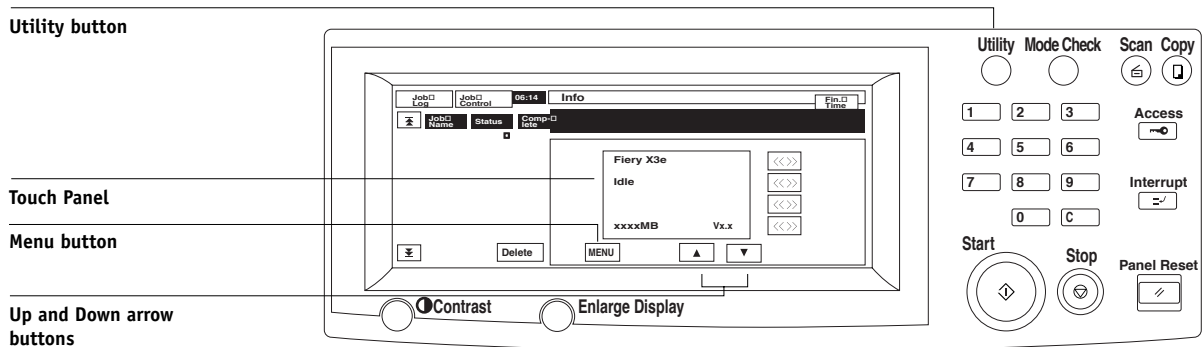
- Server Setup to specify system options
- Network Setup to specify all the active network systems that transmit print jobs to the Fiery X3e
- Printer Setup to specify how print jobs and queues are managed
- PS Setup to specify PostScript settings
- PCL Setup to specify PCL settings
- Color Setup to specify color settings
- Job Log Setup to specify how the Fiery X3e handles its log of printed jobs
- PrintMe™ Setup to specify remote printing options

The Change Password option in the Setup menu allows you to create and change the Administrator password on the Fiery X3e.

The Control Panel on the front of the Fiery X3e allows you to set options and view information about jobs printed to the Fiery X3e. It comprises the following parts:

- Display window—shows status information and options for setting up the Fiery X3e
- Up, down, left, and right arrow buttons—scroll menus, options, and settings

### Fiery X3e Control Panel



### Fiery X3e Control Panel

Use the Fiery X3e Control Panel to view status information, print special pages, and set up printing. While most elements in the Control Panel display have counterparts in Command WorkStation, you can view current functions on the Control Panel even when Command WorkStation is not connected to the server or is not running.

### Safety warnings

The Fiery X3e display window is a liquid crystal display (LCD) made of glass, and it can break. Do not subject it to strong shocks.

If the display window breaks and the liquid crystal material leaks out, do not inhale, ingest, or touch it. If the material gets on your skin or clothing, wash it off with soap and water immediately.

Do not touch or put pressure on the display window. This will change the color of the window.

## Accessing Setup options

---

### TO ACCESS SETUP WHEN THE FIERY X3E IS READY

1. **Make sure the information screen on the Control Panel reads Ready.**

If Printing or RIPping appears, the Fiery X3e is processing, and you must wait until the system finishes and reaches the Idle state.

2. **Press the Utility button on the Control Panel.**
3. **In the Touch Panel, press the Controller Detail button.**
4. **Press the Menu button.**
5. **Use the down arrow button to scroll to Run Setup.**

At the main Setup window, press the button for the Setup you want to access.

For first-time Setup, you must perform at least these Setups in this order: Server Setup, Network Setup, and Printer Setup. After performing these Setups, you can continue with the remaining Setups, or exit Setup and save your changes.

### About the Control Panel Setup interface

When you perform Setup from the Control Panel, you can select one menu after another and enter information about your Fiery X3e and your network and printing environment.

In each Setup screen, the last line of the display window shows the name of the current Setup menu.

## Types of Setup screens

There are two types of Setup options:

### Multiple choice questions

You are given choices (for example, Yes or No, or a list of options from which to choose). Only one choice is displayed at a time. The currently selected (or default) value appears first.

Use the up and down arrow buttons to scroll through the choices, and choose OK when the correct information is displayed.

### Information entry options

You must specify the information for your site (the printer name or IP address). Use the up and down arrow buttons to scroll through the alphanumeric symbols to make your selection.

When you enter text, enter it from left to right. The left arrow button acts as a delete key as well as a cursor-moving key.

When you have entered the settings, you must save the changes. You are usually prompted to do so. If you choose Yes, your settings overwrite previous settings. If you choose No, your previous settings are retained. If necessary, the Fiery X3e restarts after you exit from the Setup menu.

## Server Setup options

The Server Setup menu lets you specify system information that pertains to the Fiery X3e and all users. To access the menu, follow the instructions on [page 4-3](#).

When you choose Server Setup, the options appear in sequence, as follows. Default values, where applicable, appear in square brackets. Words shown in italics indicate that a product- or site-specific value is displayed.

**Server Name*****Default server name***

Enter a name for the Fiery X3e (up to 15 characters long). This name appears in the Chooser on an AppleTalk network.

**System Date**

Enter the correct system date in the standard form for your use. The date appears on the Job Log.

**System Time**

Enter the correct system time. Enter the time based on the 24-hour clock in the form HH:MM (Hours:Minutes). The time appears on the Job Log.

**Time Zone**

Specify the correct time zone. Select from a list of major cities and standard time zones.

**Print Start Page****Yes/No [No]**

Specify whether the Fiery X3e should print a start page every time it restarts. The start page displays information about the Fiery X3e, including the server name, current date and time, amount of memory installed in the Fiery X3e, network protocols enabled, and connections published.

**Use Character Set****Macintosh/DOS/Windows [Macintosh]**

Specify whether the Control Panel and Command WorkStation should use the Macintosh, DOS, or Windows character set for displaying file names. This is important if file names include accented or composite characters (such as é or æ).

For mixed-platform networks, choose the option that gives the best overall representation of the special characters you use.

**Enable Printing Groups****Yes/No [Yes]**

Specify whether to enable printer groups for Member Printing. If you enable this option, you must use Command WorkStation to define user groups and passwords. Users must then enter their group name and password when they print.

**No Account Printing  
Disable/Enable [Disable]**

Specify whether to enable account printing.

**Enable Printed Queue  
Yes/No [Yes]**

Specify whether to enable the Printed queue, which creates a storage location on the Fiery X3e disk for recent jobs that were printed from the Print queue. Users with Administrator or Operator access to the job management tools can reprint jobs from the Printed queue without resending them to the Fiery X3e. If you select No, jobs are deleted from the Fiery X3e disk immediately after they are printed.

**Jobs Saved in Printed Queue  
1-99 [10]**

This option appears only if Enable Printed Queue is set to Yes. Specify the number of jobs to be stored in the Printed queue. Jobs in the Printed queue take up space on the Fiery X3e hard disk. If disk space is low, use a smaller value for saved jobs.

**Clear Each Scan Job  
After 1 day/Now/Manually/After 1 week [After 1 day]**

Specify how you want to remove scanned data from the hard disk. If you select Manually, the scanned data remains on the hard disk until specifically deleted, or until all scanned jobs are cleared by the Administrator.

**Enable Mailbox Passwords  
Yes/No [Yes]**

Select Yes to allow users to access mailboxes with passwords.

**Save Changes  
Yes/No [Yes]**

Select Yes to activate any changes made in the Server Setup; select No to return to the main Setup menu without making any changes.

## Network Setup options

When you perform Network Setup, you configure the Fiery X3e to receive print jobs over the network systems that are used at your site.

In the Setup menu, choose Network Setup, where you specify network addresses and names to be used by workstations, servers, and the Fiery X3e when they communicate with each other.

The Network Setup menu includes three submenus that allow you to choose port types, protocols, and network services. You must perform Port Setup and enable at least one port.

For each item you enable, you are prompted to enter settings for that item. Default values, where applicable, appear in this manual with square brackets.

You should display and select options only for the network systems that are currently used at your site. If your network requirements change, you can change Network Setup at any time.

If the Fiery X3e is configured to enable more than one protocol, it automatically switches to the correct protocol when it receives a print job. When the parallel port and one or two network ports are enabled, print jobs can be received over all of those ports at the same time.

The available network types, and the Setup areas that pertain to them, are summarized in the following table.

For this Network or Connection Type	Use this Port Setup	Use this Protocol Setup	Use this Service Setup
AppleTalk over Ethernet	Ethernet Setup	AppleTalk Setup	AppleTalk printing (PAP) is enabled automatically.
TCP/IP over Ethernet	Ethernet Setup	TCP/IP Setup: Ethernet Setup	LPD Setup Web Services Setup Windows Setup Port 9100 Setup IPP Setup (Windows 9x/Me/2000/XP)
IPX/SPX over Ethernet	Ethernet Setup	IPX/SPX Setup	PServer Setup (NDS, Bindery, or both)
Parallel	Parallel Port Setup	—	—

---

#### TO ACCESS NETWORK SETUP OPTIONS

1. **Confirm that the network cable is connected to the Fiery X3e.**  
During Network Setup, the Fiery X3e queries the network for zones, servers, and server-based queues. If you perform Network Setup without a connected and functioning network, default settings are used that may not meet your needs.
2. **Choose Network Setup from the main Setup menu.**
3. **Choose Port Setup from the Network Setup menu.**
4. **To use Ethernet, choose Ethernet Setup from the Port Setup menu, and enter the appropriate settings.**
5. **To print to the parallel port, choose Parallel Port Setup from the Port Setup menu, and enter the appropriate settings.**
6. **When you have finished entering port settings, choose Exit Port Setup, and then choose Protocol Setup.**
7. **Enter the appropriate settings for the protocol or protocols you will use.**

# 4

## 4-9 Network Setup options

8. When you have finished entering protocol settings, choose **Exit Protocol Setup**, and then choose **Service Setup**.
9. Enter the appropriate settings for the services you will use.

The options are described in detail in the following pages.

---

### TO EXIT NETWORK SETUP

1. When you have finished entering service settings, choose **Exit Network Setup**.
2. Choose **Yes** when prompted to save changes.
3. From the main **Setup** menu, choose another **Setup** or choose **Exit Setup**.

### Port Setup options

You can enable Ethernet and parallel communication simultaneously. To configure the Fiery X3e, choose each port type you use and enter the settings for that port. Since network setups are nested, the names of higher-level menus are shown in this chapter to the left of each menu heading.

Network Setup  
Port Setup



#### **Ethernet Setup**

##### **Enable Ethernet** **Yes/No [Yes]**

Select **Yes** if you have Ethernet cabling connected to the Fiery X3e.

##### **Ethernet Speed** **Auto Detect/100 Mbps/10 Mbps [Auto Detect]**

Select **Auto Detect** if your network environment is mixed or if you do not know the network speed. If you know the speed of the network to which the Fiery X3e is attached (10 Mbps or 100 Mbps), select it.



### Parallel Port Setup options

You must enable the parallel port in order to enter the Parallel Port Setup options and print to the parallel port.

#### Parallel Port Setup

##### Enable Parallel Port

Yes/No [No]

Select Yes if you want to print through the parallel port. You can connect a single Windows computer to the parallel port and print directly to the Fiery X3e.

##### Port Timeout in Seconds

5–60 [5]

This option appears only if Enable Parallel Port is set to Yes. Your setting determines how long (in seconds) the Fiery X3e waits without receiving data from the parallel port before deciding that the current job is complete. Until the timeout, the Fiery X3e cannot receive new jobs through the parallel port, but it can continue to receive network print jobs.

##### Ignore EOF Character

Yes/No [Yes]

This option appears only if Enable Parallel Port is set to Yes. This option specifies that the Fiery X3e should ignore end-of-file (EOF) messages in a file. This option must be set to Yes to print PostScript files in binary format (not ASCII); under normal circumstances, it should be set to No. When this option is set to Yes, the Fiery X3e uses the parallel port timeout value to determine when the end of the file has been reached. If you experience printing problems, set this option to No.

**NOTE:** If you use a PC with Windows XP or Windows 2000, printing over the parallel port may succeed but you may need to install and use a utility that fixes ECP mode. Without the fix, ECP mode on those platforms runs very slowly. Contact your authorized service support center for more information.



## Protocol Setup options

To configure the Fiery X3e, choose each protocol and enter the settings for that protocol. You can enable AppleTalk, TCP/IP, and IPX/SPX communication simultaneously.

### AppleTalk Setup

#### Enable AppleTalk Yes/No [Yes]

Select Yes if you have an AppleTalk network connected to the Fiery X3e. This setting enables the Fiery X3e to communicate over AppleTalk networks.

#### AppleTalk Zone

##### *List of zones*

The Fiery X3e searches the network for AppleTalk zones in your network segment. Scroll through the list to select the AppleTalk zone in which you want the Fiery X3e to appear. If your segment has only one zone, the Fiery X3e is assigned to that zone automatically.

The message “No AppleTalk zone found” may mean your network has no zones, or the network cable is not connected (see [Appendix A](#)). Choose OK to dismiss the message.

### TCP/IP Setup options

To configure the Fiery X3e for TCP/IP, choose TCP/IP Setup.

Choose Ethernet Setup and enter the appropriate settings. Choose each network type you use (Ethernet) and enter the appropriate settings.

When you set an IP address, subnet mask, or gateway address for the Fiery X3e during Setup, you can allow the Fiery X3e to get these addresses automatically from a DHCP or BOOTP server. First, turn on or restart the Fiery X3e and allow it to reach Idle. Make sure the DHCP or BOOTP server is running, and then perform Fiery X3e Setup.

Network Setup  
Protocol Setup  
TCP/IP Setup



## TCP/IP Setup with Ethernet

### Ethernet Setup

#### Enable TCP/IP for Ethernet

##### Yes/No [Yes]

Select Yes if you have a TCP/IP network connected to the Fiery X3e over Ethernet cabling.

**NOTE:** If you are using TCP/IP for printing from Windows computers, enabling TCP/IP here also enables you to use Fiery utilities from Windows computers using TCP/IP protocols.

#### Enable Auto IP Configuration

##### Yes/No [Yes]

Select Yes to allow the Fiery X3e to obtain its Ethernet IP address by searching the network. Depending on your network and the protocol you select in the following option (DHCP or BOOTP), the IP address can change. Select No to assign the Fiery X3e a static IP address. If you select No, you proceed to the IP Address option, where you manually set the IP address.

#### Select protocol

##### DHCP/BOOTP [DHCP]

This option appears only if you answered Yes to Enable Auto IP Configuration. Select the protocol over which the Fiery X3e should search for its IP address. Both DHCP and BOOTP allow the Fiery X3e to obtain the Ethernet IP address and Subnet Mask automatically.

Depending on your network, the Fiery X3e might be assigned a different address after you restart the Fiery X3e. With the DHCP setting, the Fiery X3e can be assigned a different address even if it is not restarted. Make sure the network is already configured properly for the protocol you select.

#### Get Gateway Address Automatically

##### Yes/No [Yes]

Use this option to assign the gateway address automatically for printing with TCP/IP.

**IP Address**  
**[127.0.0.1]**

Enter the Fiery X3e IP address for Ethernet. This IP address, unlike an IP address set automatically, remains the same if you restart the Fiery X3e. You must change the default to a valid address for your network. For information about setting up printing with TCP/IP, see [Chapter 2](#).

**Subnet Mask**

This option lets you modify the subnet mask for printing with TCP/IP over Ethernet. To set the subnet mask, enter one of the following values:

- 255.0.0.0 if the IP address starts with a number less than 128
- 255.255.0.0 if the IP address starts with a number from 128 through 191
- 255.255.255.0 if the IP address starts with a number greater than 191

**NOTE:** Confirm the subnet mask setting with your network administrator before proceeding. In some cases, the required setting may be different from that listed.

**Gateway Address**  
**[127.0.0.1]**

This option appears only if you answered No to Get Gateway Address Automatically.

Use this option to set the gateway address for printing with TCP/IP. If your network uses a gateway, you must change the default to a correct gateway address for your network.

# 4

4-14

## Performing Setup from the Control Panel

Network Setup  
Protocol Setup  
DNS Setup



### DNS Setup

#### DNS Setup

##### Enable DNS Yes/No [No]

Select Yes to allow the Fiery X3e to resolve a name to an IP address. This option must be enabled to use PrintMe services.

##### Get DNS Automatically Yes/No [No]

Select Yes to allow the Fiery X3e to resolve a name to an IP address automatically.

##### Primary DNS Server IP Address 255.255.255.255

This option only appears if you have selected No to Get DNS Automatically. Specify the IP address of the primary DNS server.

##### Domain Name

Enter the DNS domain name.

##### Host Name

Enter the DNS host name of the Fiery X3e.

### IPX/SPX Setup options

To specify the frame types the Fiery X3e uses for IPX/SPX protocols, choose IPX/SPX Setup from the Protocol Setup menu. You must choose at least one frame type to enable IPX/SPX protocols. The Fiery X3e supports the following frame types for IPX/SPX:

- For Ethernet—Ethernet 802.2, Ethernet 802.3, Ethernet II, and Ethernet SNAP

For protocols other than IPX/SPX, the frame type is automatically enabled and does not require setup, as follows:

<b>With this protocol</b>	<b>And these printing services</b>	<b>This frame type is automatically enabled</b>
AppleTalk	PAP (Printer Access Protocol)	Ethernet SNAP
TCP/IP with Ethernet	LPD (Line Printer Daemon)	Ethernet II

### Select Frame Types

#### Enable IPX Auto Frame Type

Yes/No [No]

Specify whether the Fiery X3e should try to bind to all available frame types automatically. The Fiery X3e does so whether or not all frame types are appropriate. To determine the frame types that were successfully bound, save your changes, exit Setup, restart the Fiery X3e, and print a Configuration page. The Configuration page lists only one of the frame types that were successfully bound.

If you answer No to this option, you can select frame types manually. You must choose at least one frame type to enable IPX/SPX protocols.

The frame selection screen allows you to make multiple selections. Depending on your Port Setup selection, only Ethernet frame types or all frame types are displayed.

Press OK for each frame type used on your IPX/SPX network. An asterisk (\*) appears beside each selected frame type. Press the line selection button again to cancel a selected frame type. Use the up and down arrow buttons to scroll to additional frame types. The Fiery X3e binds to each frame type as you select it.

When you have selected all the frame types used, choose Exit IPX/SPX Setup.

#### Clear Frame Types

You can clear all frame types at once by choosing Exit IPX/SPX Setup, choosing IPX/SPX Setup, and then choosing Clear Frame Types.

## Service Setup options

PServer is a program in the Fiery X3e software that services the Novell print queues assigned to the Novell print servers set up for printing to the Fiery X3e. When you choose PServer Setup and enable PServer, you can set up NDS (Novell Directory Services), Bindery Services, or both. NDS is used with NetWare 4.x; Bindery Services are used with NetWare 3.x or 4.x in bindery emulation mode.

### LPD Setup options

Network Setup  
Service Setup  
LPD Setup



#### Enable LPD Yes/No [Yes]

Select Yes to allow lpd printing. For more information, see [“Setting up the Fiery X3e on TCP/IP networks”](#) on page 2-17.

### PServer Setup options

Network Setup  
Service Setup  
PServer Setup



#### Enable PServer Yes/No [No]

Select Yes if you have a Novell network connected to the Fiery X3e.

Choose NDS Setup if your network uses NetWare in native mode. Choose Bindery Setup if your network uses NetWare in bindery emulation mode.

If your network uses *both* NDS and Bindery, set up NDS first. If you set up NDS after Bindery, you will overwrite Bindery Setup.

If your network uses both NDS and Bindery, and uses NetWare servers in bindery emulation, note that the Fiery X3e cannot service NDS and bindery emulation servers on the same NDS tree.

Network Setup ▶  
Service Setup ▶  
PServer Setup ▶

### **NDS Setup**

Before entering NDS settings, make sure the Fiery X3e is connected to the network and that you have configured an NDS directory tree with a Printer, Print Server, and one or more Print Queue objects for Fiery X3e jobs (see [page 2-12](#)).

To perform NDS Setup, you may need permission to browse the NDS tree. If access to the Print Server is restricted, you need a login password.

The main objective of NDS Setup is to specify the Print Server object. In addition, you can indicate the location of the Fiery X3e print queues.

**NOTE:** The terms NetWare server, Novell server, and IPX server are in common use and are used here interchangeably to mean the server on an IPX network running Novell NetWare networking software.

#### **Enable NDS**

##### **Yes/No [No]**

Select Yes if the NetWare servers you will use to print to the Fiery X3e are running NetWare in native mode.

#### **Select NDS Tree**

##### **List of trees**

Use the up and down arrow buttons to browse the list of NDS trees available to the Fiery X3e. Choose OK when you have displayed the tree that contains the Printer, Print Server, and Print Queue objects you previously defined for the Fiery X3e.

Your new NDS tree selection automatically overwrites any previous tree selection. If you change the NDS tree selection and there are also current Bindery settings, you are alerted that they will be deleted. If you continue with NDS Setup, you can replace Bindery settings later. If you do not want to continue, press the Menu button to exit NDS Setup.

**Is user login needed to browse NDS tree?****Yes/No [No]**

Select No if no password is required to browse the tree. You can proceed to navigate to the Print Server object.

Select Yes if network permissions require that you log in to browse the NDS tree and see the Print Server object you want to select. If you select Yes, you are prompted to navigate to the User Login object.

**Navigate the NDS tree to User Login object.**

This message is displayed if you selected Yes for the previous option. Choose OK and browse the NDS tree, as described in the following paragraphs.

***NDS Tree name******Object list, “..”***

Browsing to find the User Login object begins with the NDS tree that you selected previously (with Select NDS Tree). Use the up and down arrow buttons to scroll through a list of objects in the tree beneath the [Root] in the hierarchy, or use the navigation symbol “..” to go up one level at a time.

In each subsequent browse screen, the top line represents your current location. The second line contains:

- A list of objects in the current container directly below your current location
- The symbol “..” to go up one level

With an object selected, choose OK to travel down the tree, or choose “..” to go up the tree. When you select an object and choose OK, that object is displayed on the top line, and the second line lists objects directly below it.

Continue to browse the NDS tree until the User Login object is displayed in the second line. Choose OK.

**Enter Password**

Enter the login password for the NDS tree, using the up and down arrow buttons to select characters, and the left and right arrow buttons to move the cursor. Choose OK.

**Navigate NDS Tree to the Print Server.**

Choose OK to browse the NDS tree to the Print Server object.

Browsing to find the Print Server object begins with the NDS tree that you selected previously (with Select NDS Tree). In each subsequent browse screen, the top line represents your current location. The second line contains:

- A list of objects in the current container directly below your current location
- The symbol “..” to go up one level

With a container object selected, choose OK to travel down the tree, or choose “..” to go up the tree. When you select an object and choose OK, that object is displayed on the top line, and the second line lists objects directly below it.

When the Print Server is displayed in the second line, choose OK.

**Enter Print Server Password**

Enter the Print Server password, using the up and down arrow buttons to enter characters, and the left and right arrow buttons to move the cursor. Choose OK. (If no password is required, choose OK.)

**Server should look for print queues in:****Entire NDS Tree/Specif. Subtree [Entire NDS Tree]**

By default, the Fiery X3e searches the entire NDS tree for Fiery X3e print connections. This option lets you restrict the search for Fiery X3e print jobs to a subtree (the Print Queue root) in which the Fiery X3e print connections have been defined. This makes the search more efficient. Select Entire NDS Tree if the tree is small. Select Specif. Subtree to restrict the search and specify the subtree.

If you select Entire NDS Tree, choosing OK returns to PServer Setup. Proceed with Bindery Setup (see [page 4-22](#)), set the Polling Interval (see [page 4-27](#)), or choose Exit PServer Setup to return to the Service Setup menu.

**Browse to the root of the Print Queue Subtree.**

This message is displayed if you selected Specified Subtree in the previous option. Choose OK to browse the NDS tree to the Print Queue subtree.

Browsing to find the container object begins with the NDS tree that you selected previously (with Select NDS Tree). In each subsequent browse screen, the top line represents your current container. The second line contains:

- A list of objects directly below your current location
- The symbol “..” to go up one level
- The symbol “.” to select the current container object (displayed in the top line) without traveling down the tree

With an object selected, choose OK to travel down the tree, or choose “..” to go up the tree. When you select an object and choose OK, that object is then displayed on the top line, and the second line lists objects contained within.

When the container that contains print queues is displayed in the second line, choose OK. In the next screen, choose “.” and choose OK to select the object in the top line.

When the Fiery X3e displays the container name, choose OK to return to PServer Setup.

Proceed with Bindery Setup (see [page 4-22](#)), set the Polling Interval (see [page 4-27](#)), or choose Exit PServer Setup to return to the Service Setup menu when prompted.

Network Setup  
Service Setup  
PServer Setup



## Bindery Setup options

### Bindery Setup

Use Bindery Setup if you have already configured one or more bindery servers (file servers running NetWare in bindery emulation) with a Print Server and a Print Queue for Fiery X3e jobs. Before entering bindery settings, be sure the Fiery X3e is connected to the network and the NetWare file server is running. If Guest Login is not supported, you need a valid user name and password.

**NOTE:** The terms NetWare server, Novell server, and IPX file server are in common use and are used here interchangeably to mean the server on an IPX network running Novell NetWare networking software.

### Bindery Setup menu

Because you can set up more than one Novell server to handle Fiery X3e print jobs, an additional menu is displayed for this purpose. The options are:

- Add File Server—creates a new file server connection to the Fiery X3e. You can set up a maximum of eight file server connections. After you have finished adding a new server, you return to the Bindery Setup menu, where you can set up another server.
- View Server List—displays the list of file servers that have already been selected to communicate with the Fiery X3e.
- Edit Connection—lets you change the NetWare Print Server that will print to the Fiery X3e.
- Remove File Server—lets you disconnect the Fiery X3e from a file server to which it is currently connected. Remove a file server when you want to reduce the number of connections to the Fiery X3e or reassign the connection to a different NetWare file server.
- Exit Bindery Setup—lets you exit this menu after you have added all servers, viewed a list of file servers, or removed a file server from the list.

**NOTE:** If you change your mind about any of the menus you have selected, use the Menu button to escape and return to the main Bindery Setup menu. To cancel all changes, exit Network Setup and select No to Save Changes.

- Network Setup ▶
- Service Setup ▶
- PServer Setup ▶
- Bindery Setup ▶

## Add File Server

This option gives you two ways to add a Novell NetWare file server.

### Select File Server

#### From List/Search by Name [From List]

You may select the file server from a scrollable list, or by a name search.

Choose From List if your network does not have a large number of file servers.

Choose Search by Name if the number of file servers is so large that scrolling through the list would take a long time.

If you selected **From List**:

#### Add Server

##### *List of all servers*

The Fiery X3e obtains a list of NetWare file servers by querying the IPX network. Use the up and down arrow buttons to select a NetWare file server from the list. Choose the server on which you have configured a print server and print queue to handle Fiery X3e print jobs.

If you selected **Search by Name**:

#### Enter First Letters of Server Name

Use the up and down arrow buttons to enter the first letters of the name of the file server you want to use, and then choose OK.

#### Add Server

##### *List of servers matching the search*

This option is displayed if you entered letters to search. Scroll through the list to select the serve you want.

Once you have chosen a file server, the Fiery X3e immediately tries to log in as a guest without a password. If it succeeds, it skips to the NetWare Print Server option.

If you try to add a file server but all Fiery X3e connections are already in use, you are prompted to remove a file server (see “[Remove File Server](#)” on page 4-26).

**File Server Login**  
**administrator/supervisor/Enter Login Name [supervisor]**

This option appears only if a password is required for login, or if there is no guest account, or the guest account is restricted. Choose Enter Login Name to enter your own login name and password or log in as a guest. Choose administrator or supervisor if you have those privileges.

**Enter Your Login Name**  
**[guest]**

This option and the next appear only if you selected Enter Login Name for the File Server Login. Enter your login name or select guest.

**Enter Your File Server Password**

Enter the password for logging in to your NetWare file server.

**NetWare Print Server**  
***Print Server Name***

Select the name of the print server that you configured in the NetWare utility PCONSOLE. This print server will route print jobs to the Fiery X3e from computers on IPX networks.

**Print Servr Password**

This option appears only if your NetWare print server is set up to require you to log in with a password. Enter your print server password.

Choose Add Server again until you have connected each NetWare file server you have configured for printing to the Fiery X3e. When you have added all the IPX file servers for your site, choose Exit Bindery Setup.

- Network Setup ▶
- Service Setup ▶
- PServer Setup ▶
- Bindery Setup ▶

### **View Server List**

#### ***Supported servers***

This option allows you to view the list of file servers currently connected to the Fiery X3e—that is, servers you have added in Bindery Setup. You are notified if there are none. When you choose OK, you return to the Bindery Setup menu.

- Network Setup ▶
- Service Setup ▶
- PServer Setup ▶
- Bindery Setup ▶

### **Edit Connection**

On each connected NetWare file server, you have defined a print server to handle Fiery X3e print jobs. Choose this option to change the print server assigned to the Fiery X3e.

#### **Choose File Server**

##### ***File server name***

From the list of connected NetWare file servers, choose the file server whose print server you want to change.

#### **NetWare Print Server**

##### ***List of print servers on selected file server***

Choose the name of the print server to use. This is the print server that will route print jobs to the Fiery X3e from computers on IPX networks.

If you do not want to make any changes, press the Menu button to return to the Bindery Setup menu.

**Enter Your Print Server Password**

This option appears only if your NetWare print server is password-protected. Enter your print server password.

The Bindery Setup menu is displayed again. You can edit other connections, choose another Bindery Setup option, or choose Exit Bindery Setup.

- Network Setup ▶
- Service Setup ▶
- PServer Setup ▶
- Bindery Setup ▶

**Remove File Server****Remove support for  
*File server name***

This option allows you to select a NetWare file server from a list of connected file servers and remove the connection to it. You are notified that you have removed the connection, and the Bindery Setup menu is displayed again. If you change your mind and do not want to remove any of the file servers, press the Menu button.

You can choose another Bindery Setup option (such as adding another file server) or choose Exit Bindery Setup and proceed to set the polling interval.

- Network Setup ▶
- Service Setup ▶
- PServer Setup ▶
- Bindery Setup ▶

**Exit Bindery Setup**

Choose Exit Bindery Setup after you view a list of IPX file servers, remove a file server from the list, or connected all the configured NetWare file servers. After you select Exit Bindery Setup, you return to the PServer Setup menu.

Network Setup  
Service Setup  
PServer Setup



### Polling Interval options

#### Polling Interval

Whether you use NDS or Bindery services, choose Polling Interval from the main PServer Setup menu. If you do not reset the interval, the default value of 15 seconds is used.

#### NetWare Server Poll Interval in Seconds 1–3600 [15]

Specify the interval, in seconds, at which the Fiery X3e communicates with the Novell print server to see if there are print jobs waiting.

**NOTE:** If you select a short interval, the amount of network traffic increases. This may slow down other network jobs.

### Windows Setup options

Network Setup  
Service Setup  
Windows Setup



#### Enable Windows Printing Yes/No [Yes]

Enabling Windows Printing enables Server Message Block (SMB), the file and printer sharing protocol built into Windows. Enabling SMB allows the Fiery X3e to be listed on the network so that Windows clients can print to a particular print connection (Hold, Print, or Direct) on the Fiery X3e without any other networking software. For information on setting up a Windows computer for Windows printing, see the *User Software Installation Guide*. Windows printing runs via TCP/IP, so you must configure TCP/IP on the Fiery X3e and on all computers that use Windows printing.

**Use Automatic Configuration****Yes/No [No]**

This option appears if you chose DHCP or BOOTP as the protocol for automatically obtaining the IP address of the Fiery X3e.

Choose Yes and the Fiery X3e uses a WINS name server and automatically obtains its IP address. Make your choice and proceed to the Server Name option.

Choose No to proceed to the Use WINS Name Server option, where you specify whether to use a WINS name server, and then to the WINS IP Address option, where you specify its IP address.

**Use WINS Name Server****Yes/No [No]**

Broadcasts from SMB devices cannot pass across a router without a WINS name server. Setting up the WINS name server is outside the scope of this manual. To find out if a name server is available, contact your network administrator.

**Point and Print Drivers****PS/PCL [PS]**

Select the type of driver to download when setting up a printer for Windows printing.

**WINS IP Address****[127.0.0.1]**

This option appears only if you choose Yes for WINS Name Server. Change the default address to the correct IP address for the WINS Name Server. Obtain the correct address from your network administrator.

**Server Name*****Default Name***

The server name is the name that will appear on the network for accessing the Fiery X3e via SMB. The default name is the same as the server name assigned in Server Setup (see [page 4-4](#)).

**Server Comments**

Server comments (optional) can contain information about the printer. These comments are listed in the Fiery X3e Properties in Network Neighborhood and can be up to 15 characters.

**Set Domain Name****Select from list/Enter manually [Select from list]**

This option provides two ways to specify the workgroup or domain in which you want the Fiery X3e to appear.

If you selected **Select from list:**

**Choose Domain****List of domains**

Select the workgroup or domain from the list.

If you selected **Enter manually:**

**Workgroup or Domain**

Enter the name of the workgroup or domain. For more information about entering text and characters, see “Types of Setup screens” on page 4-4.

**Web Services Setup**

- Network Setup ▶
- Service Setup ▶
- Web Services Setup ▶

**Enable Web Services****Yes/No [Yes]**

Select Yes to make the WebTools available to users (see [page 6-1](#)). TCP/IP must be enabled on the Fiery X3e and on user workstations. The WebTools include WebSpooler, Status, WebLink, WebScan, WebDownloader, WebSetup, and Installer.

A Java-enabled Web browser and a valid IP address or DNS host name are required for each user. For details on browser choice and workstation requirements, see the [User Software Installation Guide](#).

**IPP Setup**

- Network Setup ▶
- Service Setup ▶
- IPP Setup ▶

**Enable IPP****Yes/No [Yes]**

Select Yes to enable printing with the Internet Printing Protocol (IPP). You must enable Web Services. For information on setting up user computers to use IPP printing, see the [User Software Installation Guide](#).

### Port 9100 Setup

- Network Setup ▶
- Service Setup ▶
- Port 9100 Setup ▶

#### Enable Port 9100 Yes/No [No]

This option enables applications to open a TCP/IP socket to the Fiery X3e at Port 9100 to download a print job.

#### Port 9100 Queue Direct/Print Queue/Hold Queue [Print Queue]

Specify the Fiery X3e print connection for downloading jobs to Port 9100. Only the print connections you have enabled in Printer Setup are available.

### E-mail Setup

- Network Setup ▶
- Service Setup ▶
- E-mail Setup ▶

#### Enable E-mail Services Yes/No/Restore Settings [No]

This option enables the Fiery X3e to use e-mail as a means of communication for a variety of purposes. The Fiery X3e serves as a messenger between the copier and the e-mail recipient. Choose Restore Settings to restore the previous settings.

#### Enable Print via E-mail Yes/No [No]

Choose Yes to enable printing through e-mail.

#### Enable Remote Diagnostics Yes/No [No]

Enabling this option allows the service technician to remotely run diagnostics through e-mail. See your copier documentation for more information.

#### RD Outgoing Server 127.0.0.1

This option appears only if you have selected Yes to Enable Remote Diagnostics. See your copier documentation for more information.

**RD Incoming Server**  
**127.0.0.1**

This option appears only if you have selected Yes to Enable Remote Diagnostics. See your copier documentation for more information.

**RD Server Type**  
**POP3/IMAP [POP3]**

This option appears only if you have selected Yes to Enable Remote Diagnostics. See your copier documentation for more information.

**RD E-mail User Name**

This option appears only if you have selected Yes to Enable Remote Diagnostics. See your copier documentation for more information.

**RD E-mail Domain Name**

This option appears only if you have selected Yes to Enable Remote Diagnostics. See your copier documentation for more information.

**RD Account Name**  
***youraccount***

This option appears only if you have selected Yes to Enable Remote Diagnostics. See your copier documentation for more information.

**RD Password**

This option appears only if you have selected Yes to Enable Remote Diagnostics. See your copier documentation for more information.

**RD Admin User Name**  
***youremail***

This option appears only if you have selected Yes to Enable Remote Diagnostics. Enter the user name of the Administrator e-mail account. This is typically the part of the e-mail address that precedes the @ symbol. For example, in the address pat@test.com, the user name is pat. See your copier documentation for more information.

**RD Admin Domain Name**  
**yourdomain.com**

This option appears only if you have selected Yes to the previous option, Enable Remote Diagnostics. Enter the name of the Fiery domain where the administrator has an account. This is typically the part of the e-mail address that follows the @ symbol. For example, in the address pat@test.com, the domain name is test.com. See your copier documentation for more information.

**Outgoing Server**  
**[127.0.0.1]**

Enter the IP address of the server on your network that handles outgoing e-mail.

**Incoming Server**  
**[127.0.0.1]**

Enter the IP address of the server on your network that handles incoming e-mail.

**Server Type**  
**POP3/IMAP [POP3]**

Choose the type of mail server.

**Fiery E-mail User Name**

Enter the user name of the e-mail account. This is typically the part of the e-mail address that precedes the @ symbol. For example, in the address pat@test.com, the user name is pat.

**Fiery E-mail Domain Name**

Enter the name of the domain in which the user has an account. This is typically the part of the e-mail address that follows the @ symbol. For example, in the address pat@test.com, the domain name is test.com.

**Account Name**

Enter the account name. This is the internal name your network recognizes, which is not necessarily the same as User Name.

**Password**

Enter the password for the e-mail account.

**Administrator E-mail User Name**

Enter the administrator name of the administrator e-mail account. This is typically the part of the e-mail address that precedes the @ symbol. For example, in the address pat@test.com, the administrator e-mail user name is pat.

**Administrator E-mail Domain Name**

Enter the name of the domain in which the administrator has an account. This is typically the part of the e-mail address that follows the @ symbol. For example, in the address pat@test.com, the domain name is test.com.

The administrator authorizes a unique e-mail address to remotely administer Fiery E-mail Services via e-mail. If an error occurs while you are executing a scan to e-mail, the e-mail service sends an error message to that administrator e-mail address. The administrator can authorize additional e-mail addresses as administrators from this e-mail address.

**Timeout (sec)****30–300 [60]**

Enter the length of time, in seconds, the Fiery X3e should try to connect to each e-mail server before determining that the connection is unsuccessful.

**Poll Interval (sec)****1–3600 [15]**

If you have enabled auto-checking for new messages in the previous option, enter the interval in seconds at which the Fiery X3e should automatically check for new e-mail.

**Max Scan File Size****0–15000 [1000]**

Specify the maximum file size the Fiery X3e can send scans as an attachment. If the scan file exceeds this maximum, the file is automatically sent as a URL.

Network Setup  
Service Setup  
FTP Setup



## FTP Setup

### Enable FTP Services Yes/No [Yes]

This option enables users to scan jobs from the Fiery X3e to an FTP site.

### Enable Proxy Setup No/Yes [No]

Select Yes to enable the following proxy server setup options for security purposes when scanning to an FTP site. Selecting No returns you to the main Network Setup menu.

### Proxy Server IP Address 127.0.0.1

Enter the IP address of the proxy server on your network. This option appears only if you have selected Yes to Enable Proxy Setup.

### Proxy Server Port Number 0-9999 [0]

Enter the port number of the proxy server on your network. This option appears only if you have selected Yes to Enable Proxy Setup. This port number must be entered at the Fiery X3e when scanning jobs to a secure FTP site.

### Proxy Server Timeout (sec) 0-999 [0]

Enter the length of time, in seconds, that the Fiery X3e should try to connect to each proxy server before determining that the connection is unsuccessful. This option appears only if you have selected Yes to Enable Proxy Setup.

Network Setup  
Service Setup



### Proxy Server User Name

Enter the user name for the proxy server. This option appears only if you have selected Yes to Enable Proxy Setup.

### Proxy Server User Password

Enter the user password for the proxy server. This option appears only if you have selected Yes to Enable Proxy Setup.

### Exit Service Setup

This returns you to the main Network Setup menu. Choose Exit Network Setup.

### Save Changes

Yes/No [Yes]

Select Yes to activate any changes made in Network Setup; select No to return to the main Setup menu without making any changes.

## Printer Setup options

Printer Setup configures the connections and printing behavior associated with a particular printing device. For more information on Fiery X3e print connections, see [page 3-1](#).

---

### TO ACCESS PRINTER SETUP OPTIONS

1. In the main Setup menu, choose **Printer Setup**.
2. Enter the options appropriate to the printing requirements at the site.
3. When you have finished, save changes.

In the following list of options, default values, where applicable, appear in brackets.

**NOTE:** For users to use the Fiery utilities and WebTools or print to the Fiery X3e over a TCP/IP network, you must publish at least the Hold queue or the Print queue.

**Publish Direct Connection****Yes/No [Yes]**

This option allows users to print (or download) jobs to the Fiery X3e without spooling. Jobs printed to the Direct connection are not saved in the Printed queue.

If you plan to download fonts to the Fiery X3e, you must publish the Direct connection.

**Publish Print Queue****Yes/No [Yes]**

This option allows users to print (or download) jobs to the Print queue. Jobs that are printed to the Print queue are spooled to the Fiery X3e disk and printed on a first-in, first-out basis. Only queues published in the Printer Setup are available to users.

**NOTE:** To print to the Fiery X3e over the parallel port, you must publish a queue or publish the Direct connection.

**Publish Hold Queue****Yes/No [Yes]**

Use this option to allow users to print (or download) jobs to the Hold queue. Jobs in the Hold queue can only be printed by copying or moving the jobs to the Print queue with the job management tools.

**Personality****Auto/PCL/PostScript [Auto]**

In PCL or PostScript mode, the Fiery X3e is restricted to PCL or PostScript jobs, respectively. Jobs sent to the Fiery X3e that do not match the personality selected on the Fiery X3e are not printed. In Auto mode, the Fiery X3e switches to the appropriate page description language for each job.

**Save Changes****Yes/No [Yes]**

Select Yes to activate any changes made in the Printer Setup; select No to return to the main Setup menu without making any changes.

## PostScript Setup options

PS (PostScript) Setup allows you to set defaults for the Fiery X3e. Users can override most of these defaults on a job-by-job basis. However, users printing from UNIX or DOS command lines cannot override defaults from their applications. Therefore, you must set defaults in PostScript Setup. For information about these defaults, see the *Printing Guide*.

---

### TO ACCESS POSTSCRIPT SETUP OPTIONS

1. In the main Setup menu, choose PS Setup.
2. Enter the options appropriate to the printing requirements at the site.
3. When you have finished, save changes.

In the list of options that follows, default values, where applicable, appear in square brackets.

#### Default Paper Sizes

**US/Metric [US in the United States, Metric elsewhere]**

Specify whether to print on US paper sizes (for example, Letter, Legal, 11x17), or Metric paper sizes (for example, A4 or A3) by default. When no page size is defined within a PostScript file, jobs are printed on Letter paper if you selected US; or A4 paper if you selected Metric.

#### Convert Paper Sizes

**No Letter/11x17->A4/A3 A4/A3->Letter/11x17 [No]**

Specify whether to convert paper sizes in documents automatically to the default paper sizes specified. For example, if you select Letter/11x17->A4/A3, a letter size document is automatically printed on A4 paper.

**NOTE:** This option works in conjunction with the Default Paper Sizes option. For example, if Convert Paper Sizes is set to Letter/11x17->A4/A3, and Default Paper Sizes is set to US, then jobs are printed A4/A3 size. This also includes Fiery X3e system pages such as the Start Page, Test Page, and Job Log.

**Color Mode**  
**CMYK/Grayscale [CMYK]**

Specify whether to print color (CMYK) or Grayscale images to the Fiery X3e by default. CMYK gives you full color prints. Select CMYK as the Color Mode before performing calibration on the Fiery X3e. Grayscale converts all colors into shades of gray.

**Print to PS Error**  
**Yes/No [No]**

Specify whether the Fiery X3e should print the available portion of a print job when it encounters a PostScript error. Select Yes to print the portion of the job that was processed before the error occurred; select No to cancel the print job entirely when a PostScript error is encountered. Leave this option at No unless you encounter printing problems.

**Allow Courier Substitution**  
**Yes/No [Yes]**

Specify whether to substitute Courier for fonts that are unavailable when you download files to the Fiery X3e, or when you print a document for which you do not have the corresponding printer font. If this option is set to No, jobs with fonts that are unavailable on the Fiery X3e hard disk generate a PostScript error and do not print. This setting does not apply to PDF files; font substitution occurs automatically in PDF files.

**Print Cover Page**  
**Yes/No [No]**

Specify whether the Fiery X3e prints a cover page (job summary) at the end of each print job. If you select Yes, each print job is followed by a page containing the name of the user who sent the job, the document name, the server name, the time the job was printed, the number of pages printed, and the status of the job. If a PostScript error occurs and the Print to PS Error option is set to Yes, the cover page lists the PostScript error message instead of the job status.

**Save Changes**  
**Yes/No [Yes]**

Select Yes to activate any changes made in PS Setup; select No to return to the main Setup menu without making any changes.

## PCL Setup options

PCL Setup allows you to set defaults to control printer output. These defaults can be overridden by the user from within an application, but they determine how a job will be printed in the absence of other information.

**NOTE:** PCL printing is supported for Windows computers only. Mac OS computers must use the PostScript driver.

---

### To ACCESS PCL SETUP OPTIONS

1. In the main Setup menu, choose PCL Setup.
2. Enter the options appropriate to the printing requirements at the site.
3. When you have finished, save changes.

In the list of options that follows, default values, where applicable, appear in square brackets.

#### Default Tray

**Auto/Tray 4, Tray 3, Tray 2, Tray 2 [Auto]**

Specify the default paper tray.

#### Default Duplex

**Off/Top-Bottom/Left [Off]**

Select Off for simplex (single-sided) printing. Select Top-Bottom for duplex (double-sided) printing with the back side upside down. Select Left for duplex printing with both sides using the same top edge.

#### Default Copies

**1-999 [1]**

Specify the default number of copies the Fiery X3e will print for PCL jobs.

#### Paper Size

**A3wide+/A3wide/A3/A4/A5/A6/ISO B4/JIS B4/ISO B5/JIS B5/JIS B6/Hagaki/  
12.25x18/12x18/11x17/11x14/Legal/Letter/5.5x8.5/4x6/Exe./FLS1/FLS2/FLS3/  
FLS4/C10/C5/DL/Monarch [Letter in the United States, A4 elsewhere]**

Specify the default paper size that the Fiery X3e uses to print PCL jobs.

**Default Orientation**  
**Portrait/Landscape [Portrait]**

This option determines whether the text or image will be oriented along the short edge of the paper (portrait) or along the long edge of the paper (landscape).

**Form Length (lines)**  
**5-128 [60]**

This option sets the number of lines to be printed per page.

**Font Size (pt)**  
**4.0-999.75 [012.00]**

When the number selected in Font Number represents a proportionally spaced scalable font, the Font Size option appears, allowing you to determine the point size (height) of the default font.

**Font Pitch (char/in)**  
**0.44-99.99 [010.00]**

When the number selected in Font Number represents a fixed pitch scalable font, the Font Pitch option appears, allowing you to determine the width of scalable type. Pitch is measured by characters per inch, so 10-pitch type fits ten characters per inch.

**Symbol Set**  
**ASCII/Roman-8/ECMA-94 L1/PC-8... [Desktop]**

This option lets you choose the symbol set that best matches the needs of users printing to the Fiery X3e.

**Font Number**  
**0-999 [0]**

The font number designates the default font for the Fiery X3e.

To determine font numbers, print the internal PCL Font List. The standard fonts are listed in order. The font numbers, however, are not displayed.

**Paper Size for System Pages**  
**US/Metric [US in United States, Metric elsewhere]**

Specify the paper size that PCL system pages print on. System pages are pages that you print from the Control Panel, such as the PCL Font List.

**Save Changes**  
**Yes/No [Yes]**

Select Yes to activate any changes made in PCL Setup; select No to return to the main Setup menu without making any changes.

## Color Setup options

Color Setup allows you to set defaults the Fiery X3e uses to control color output. Mac OS and Windows users who use the printer drivers provided on the User Software CD can override most of these defaults on a job-by-job basis. However, users printing from UNIX or DOS command lines cannot override defaults from their applications. Therefore, you must set defaults in Color Setup.

The preferred method for setting color defaults is to use Color Setup, part of the ColorWise Pro Tools. The color options are described in this section for your reference. For more information about these defaults, see the *Printing Guide* and *Color Guide*.

**NOTE:** In addition to the defaults described in this section, additional settings are available to Mac OS and Windows users from the printer drivers.

---

### TO ACCESS COLOR SETUP OPTIONS

In the following list of options, default values, where applicable, appear in square brackets.

**RGB Source Profile**  
**EFIRGB/sRGB (PC)/Apple Standard/None [EFIRGB]**

The RGB source is the color space used to control color for conversion from monitor to printed output. EFIRGB is based on the reference points used in the creation of the Fiery X3e software. sRGB is based on an average of a large number of PC monitors. Apple Standard is the standard reference point for Apple's ColorSync software.

**Rendering Style****Photographic/Presentation/Abs. Colorimetric/Rel. Colorimetric [Presentation]**

The color rendering dictionary (CRD) defines how colors are converted from the RGB color space to device CMYK. Photographic, designed for images, retains the relative balance between colors to maintain the overall appearance of the image. Presentation, designed for bright colors, produces the saturated prints needed for most business presentations, but handles photographic images the same way as the Photographic CRD. Absolute Colorimetric provides the closest match to the CMYK device being simulated, including rendering the paper color as the background. Relative Colorimetric provides a close match to the CMYK device being simulated, regardless of the media used.

**CMYK Simulation Profile****SWOP-Coated (EFI)/DIC (EFI)/Euroscale (EFI)/None [SWOP-Coated (EFI) in North America, Euroscale (EFI) elsewhere]**

CMYK simulation allows color correction to simulate printed output on a commercial press, so that the Fiery X3e output can be used for proofing. The SWOP-Coated standard is used in the United States, DIC in Japan, and Euroscale in Europe. Custom simulations are user defined and named. The simulations provided with the Fiery X3e have the designation “EFI” after their names.

If users create and load custom simulations on the Fiery X3e with ColorWise Pro Tools, these also appear in the list of simulations. A custom simulation can be selected as the default simulation. For more information about custom simulations, see the *Color Guide*.

**CMYK Simulation Method****Quick/Full (Source GCR)/Full (Output GCR) [Full (Output GCR)]**

Quick simulation assumes that the copier toners match the printer’s inks, and all changes affect only one color (C, M, Y, or K) at a time. Full (Source GCR) simulation allows for more flexibility in matching toner to ink and all changes interact to maintain a better color balance. Full (Output GCR) offers accurate proofing by providing a colorimetric conversion of all four plates. In this simulation method, the black (K) plate is mixed into the CMY plates, then re-separated based on the Output profile.

**RGB Separation  
Output/Simulation [Output]**

This option defines how the Fiery X3e processes RGB jobs. Select Output for RGB jobs that you print to the final output device. Select Simulation to simulate an output device that is not the device to which you are printing.

**Pure Black Text/Graphics  
On/Off [On]**

The Pure Black Text/Graphics option optimizes black text and line art. The option also minimizes toner use for documents consisting of both color and black-only pages.

With this option On, black text and line art are printed with black toner only.

With the option Off, black text and line art are printed using all four colors of toner.

For more information, see the *Color Guide*.

**Black Overprint  
On/Off [On]**

With this option On, black text overprints on colored backgrounds. With this option Off, black text knocks out color backgrounds. Generally this option should be On.

For more information, see the *Color Guide*.

**Spot Color Matching  
On/Off [On]**

With this option On, the Fiery X3e uses an internal lookup table to print the best equivalents of PANTONE colors. With this option Off, PANTONE colors are printed using the CMYK values defined in the original applications. For more information, see the *Color Guide*.

**Save Changes  
Yes/No [Yes]**

Select Yes to activate any changes made in Color Setup; select No to return to the main Setup menu without making any changes.

## PrintMe Setup options

PrintMe allows users to access and print their e-mail messages, Internet content, and other documents anytime, anywhere, from any device, to the Fiery X3e.

**NOTE:** Jobs sent with a PrintMe account are only sent through the Fiery X3e Direct connection.

For more information about PrintMe, go to [www.printme.com](http://www.printme.com).

---

### TO ACCESS PRINTME SETUP OPTIONS

1. In the main Setup menu, choose **PrintMe Setup**.
2. Enter the options appropriate to the printing requirements at the site.
3. When you have finished, save changes.

In the following list of options, default values, where applicable, appear in square brackets.

#### **Enable PrintMe** **Yes/No [No]**

To enable PrintMe, you must first set up DNS. For information on DNS Setup, see [page 4-14](#). Select Yes to enable PrintMe, select Save, and exit Setup.

The Fiery X3e restarts and acquires the 16-digit activation code required to proceed with PrintMe Setup. Immediately after the Fiery X3e restarts, a PrintMe activation page is printed with the Fiery X3e PrintMe activation code.

From any web enabled computer, go to [www.printme.com](http://www.printme.com) and click Activate Stations. Enter the 16-digit activation code that was printed on the PrintMe confirmation page.

**NOTE:** We highly recommend that you enter your PrintMe activation code within an hour from the time it is printed. Your activation code may become invalid if you try to enter your code after this time elapses. If this happens, you must disable PrintMe in Setup, allow the Fiery X3e to restart, and go through PrintMe Setup again to get a valid activation code.

## PrintMe Activation Code

- PrintMe Setup ▶
- Activation Code ▶

### Activation Code

This displays the PrintMe activation code. If no activation code is available, PrintMe is not enabled. You must first enable PrintMe and follow the instructions on the previous page.

## Web Proxy Setup

Specify proxy settings if your network uses a proxy server to access external web sites.

- PrintMe Setup ▶
- Web Proxy Setup ▶

### Web Proxy Setup

#### Proxy Type

**None, Auto Detect, HTTP, Socksv4, Socksv5 [None]**

Specify the proxy type used.

#### Proxy Server

##### Proxy Server By

**DNS Name/IP Address [DNS Name]**

Select DNS if your Proxy server is assigned a name. Select IP address if no DNS name is assigned.

##### By DNS Name

Enter the DNS name of your proxy server. This option appears only if you selected DNS Name in the previous option.

##### By IP Address

Enter the IP address of your proxy server. This option appears only if you selected IP address in the Proxy Server By option.

**Proxy Port Number****Proxy Port Number****0-65535 [0]**

Enter the proxy port number assigned to PrintMe Services.

In addition, some proxy servers require a user name and password for access. If the proxy server in your environment has such requirements, you must configure PrintMe services with a valid user name and password to use when accessing the proxy server. Some Microsoft proxy servers also require that you specify the Windows domain for which the user name and password are valid.

**Proxy Server Domain****Proxy Server Domain**

Enter the name of the proper domain for use with the proxy server.

**Proxy User Name****Proxy User Name**

Enter the user name for use with the proxy server.

**Proxy Password****Proxy Password**

Enter the password for use with the proxy server.

**Verify New Password**

Reenter the password assigned to the proxy server.

**Save Changes****Yes/No [Yes]**

Select Yes to activate any changes made in PrintMe Setup; select No to return to the main Setup menu without making any changes.

## Administrative functions in the Setup menu

The remaining choices in the Setup menu are intended to help you manage print jobs and color output, but are not required for printing.

- **Job Log Setup** allows you to specify whether the Fiery X3e prints and clears its log of printed jobs automatically.
- **Change Password** allows you to create or change an Administrator password on the Fiery X3e so that casual users cannot enter the Setup menus and change settings without permission. The Administrator password also controls many functions available from the job management tools.
- **Clear Server** clears all queued print jobs from the server—jobs in the Fiery X3e Print, Hold, and Printed queues. Clear Server also clears the Job Log, all jobs archived on the Fiery hard disk, the index of archived jobs, and all Fiery FreeForm masters and the index of Fiery FreeForm masters.
- **Factory Defaults** clears all queued jobs and resets the Fiery X3e Setup options to the factory defaults. Once the Fiery X3e is reset, you select the language in which to display Setup menus and system messages.

---

### TO SET JOB LOG OPTIONS

1. In the main Setup menu, choose **Job Log Setup**.
2. Enter the options, as described in the following section.
3. When you have finished, save changes.

## Job Log Setup

The Job Log is a record of all jobs processed or printed on the Fiery X3e, whether they originate from a user workstation, a networked server, or the Fiery X3e. You can print the Job Log from the Control Panel or from the job management tools.

The printed Job Log lists accounting information about each job, including user name, document name, time and date printed, and number of pages. Windows and Mac OS users can enter job-specific notes that appear in the Job Log.

By default, the Job Log is not printed or cleared automatically. You can change these defaults in Job Log Setup. You can also print and clear the Job Log from the job management tools.

Default values for the following options, where applicable, appear in square brackets.

### **Auto Print Job Log Every 55 Jobs**

**Yes/No [No]**

Use this option to specify whether the Fiery X3e prints the Job Log after every 55 jobs. Setting the Job Log for automatic printing is useful if accounting for each printed page is important at your site.

### **Auto Clear Job Log Every 55 Jobs**

**Yes/No [No]**

Use this option to specify whether to clear the Job Log after every 55 jobs. If you do not enable this option, and do not clear the Job Log from the Fiery X3e or from a remote workstation, the Fiery X3e saves a record of all jobs.

**NOTE:** If Auto Print Job Log is set to No, setting this option to Yes has no effect.

**Job Log Page Size****Tabloid/A3 Letter/A4 [Tabloid/A3]**

Select the paper size for printing the Job Log. Regardless of page size, 55 jobs are listed on a page. The paper size used depends on the Default Paper Sizes setting in PS Setup. If the Default Paper Sizes setting is US, the Job Log is printed on Tabloid or Letter size paper, with Tabloid the default.

**Save Changes****Yes/No [Yes]**

Select Yes to activate any changes made in Job Log Setup; select No to return to the main Setup menu without making any changes.

**Exit Setup**

Choose Exit Setup from the first screen of the main Setup menu when you have finished making Setup changes.

The Fiery X3e restarts and any changes you saved during the Setup take effect.



## Chapter 5: Setting up the Fiery X3e from a Windows Computer

After you perform initial Setup (Server, Network, and Printer Setup) from the Control Panel, you can change most Setup options from a Windows computer.

### Accessing Setup

In addition to using the Control Panel, you can set up the Fiery X3e remotely. You can perform remote Setup from a Windows computer using WebSetup or Command WorkStation.

To use the Setup applications (WebSetup or Command WorkStation), you must enter the Fiery X3e Administrator password. This is set either from the local Setup at the Control Panel, or remote Setup from WebSetup or Command WorkStation.

### Remote Fiery Setup

Remote Setup is performed from a Windows computer using WebSetup or Command WorkStation.

---

#### TO ACCESS WEBSETUP

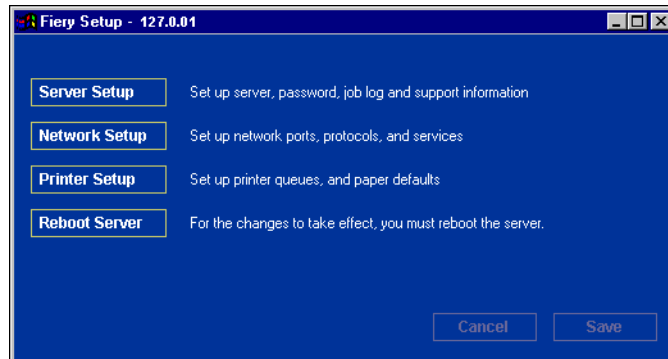
1. Start your Internet browser and enter the IP address of the Fiery X3e.
2. Click the Fiery WebTools icon in the lower-left corner of the window.
3. Log in as Administrator.
4. When the Fiery X3e home page appears, click WebSetup.

---

**TO ACCESS SETUP FROM COMMAND WORKSTATION**

1. **Start Command WorkStation.**
2. **Log on as Administrator.**
3. **Choose Setup from the Server menu.**

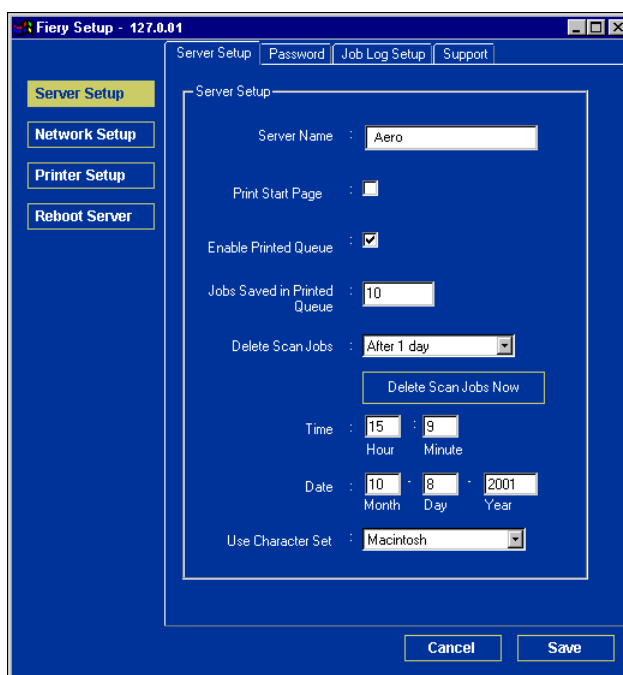
Regardless of how you access Setup remotely, the following dialog box appears.



**NOTE:** The interface of remote Setup from Command WorkStation and WebSetup is identical. The Setup illustrations in this chapter are displayed from Command WorkStation.

## General Setup options

You can specify Fiery X3e system settings that affect all users, such as the name of the Fiery X3e, system date and time, passwords, and Job Log printing.



**Server Name**—Specify a name for the Fiery X3e. This is the name that appears in the Chooser on an AppleTalk network.

**NOTE:** Do not use the device name (31C-M) as the server name. If you have more than one Fiery X3e, do not assign them the same name. Windows NT 4.0 does not support more than one computer with the same name in the same workgroup or domain.

**Date and Time**—Specify the system date and time, which are recorded on the Job Log.

**Enable Printed Queue**—Specify whether to enable the Printed queue, a storage location on the Fiery X3e disk for recently printed jobs. You can reprint jobs from the Printed queue without resending them to the Fiery X3e. If the Printed queue is not enabled, jobs are deleted from the Fiery X3e disk immediately after they are printed.

**Jobs Saved in Printed Queue**—Specify the number of jobs to be stored in the Printed queue. Jobs in the Printed queue take up space on the Fiery X3e hard disk.

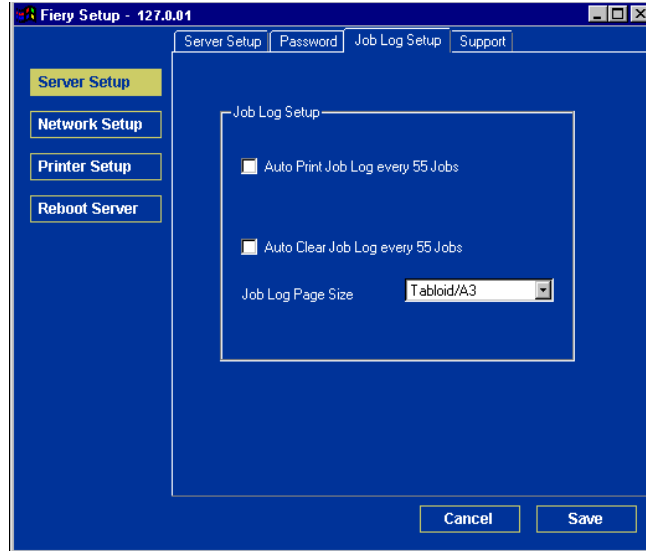
**Delete Scan Jobs**—Specify how often to delete scan jobs from the Fiery X3e hard disk. Choose Manually to delete scan jobs manually on a job-by-job basis. Click Delete Scan Jobs Now to delete all scan jobs immediately.

**Use Character Set**—Specify whether the Control Panel and the job management tools should use the Macintosh, DOS, or Windows character set for displaying file names. This is important if a file name includes accented or composite characters (such as é or æ). For mixed-platform networks, select the setting that gives the best overall representation of the special characters you use.

**Print Start Page**—Specify whether the Fiery X3e should print a start page when it is turned on or restarted. The Start Page displays information about the Fiery X3e, including server name, current date and time, amount of memory installed, network protocols enabled, and print connections published.

**Support**—Enter names, phone numbers, and e-mail addresses of contact people at your organization who provide support for the Fiery X3e and the copier. In remote Setup, use the Support tab.

## Job Log Setup



**Auto Print Job Log Every 55 Jobs**—Specify whether the Fiery X3e prints the Job Log after every 55 jobs. The Job Log lists the last 55 jobs processed on the Fiery X3e, with accounting information about each one, including user name, document name, time and date printed, number of pages, and other job information.

**Auto Clear Job Log Every 55 Jobs**—Specify whether the Fiery X3e clears the Job Log after every 55 jobs. If you do not select this option, the Fiery X3e saves a file containing a record of all jobs ever printed. Since this file takes up space on the Fiery X3e hard disk, clearing the Job Log frees up additional disk space.

You can clear the Job Log manually at any time with the job management tools.

**Job Log Page Size**—Select a paper size for the printed Job Log.

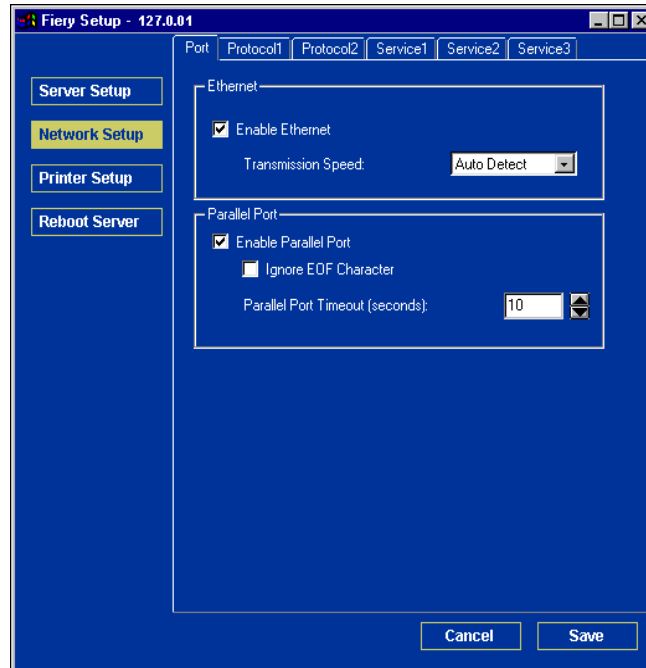
## Network Setup

Network Setup configures the Fiery X3e to receive print jobs over the networks used at your site. If the Fiery X3e is configured to enable more than one protocol, it automatically switches to the correct protocol when it receives a print job. When the parallel port and one or two network ports are enabled, print jobs can be received over all ports at the same time.

You can view and specify the following network settings in Network Setup:

- Adapters and ports—view currently configured network adapters and port settings
- Protocols—including AppleTalk, IPX/SPX, and TCP/IP
- Print Services—including LPD printing (TCP/IP), NetWare printing (PServer), Windows print sharing (SMB), HTTP support (WWW), Internet Printing Protocol (IPP) printing, and Port 9100 printing
- E-mail Service—specify the Fiery E-mail Service

## Adapters/Ports



### Ethernet (Port Setup)

**Enable Ethernet**—Select to connect the Fiery X3e to an Ethernet network.

**Transmission Speed**—Choose Auto Detect if your network environment is mixed, or choose the speed of the network to which the Fiery X3e is attached (10 Mbps or 100 Mbps).

**Parallel Port (Port Setup)**

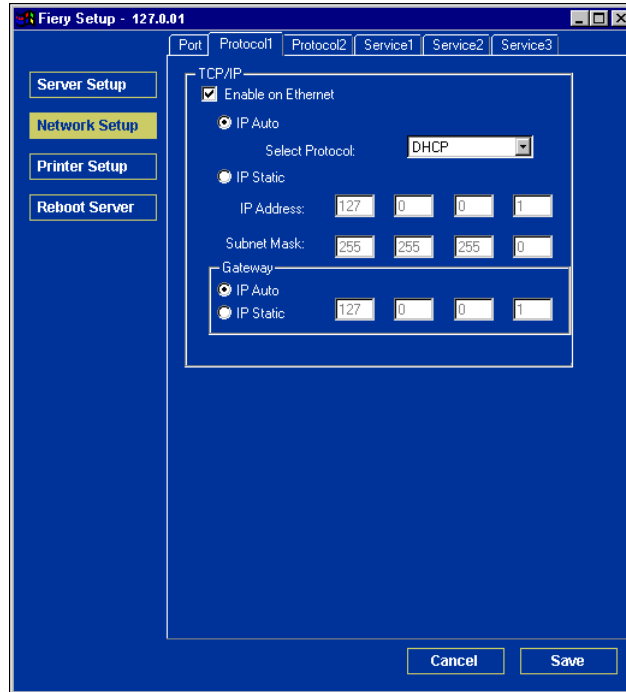
**Enable Parallel Port**—Specify whether you want to print through the parallel port. You can connect a single Windows computer to the parallel port and print directly to the Fiery X3e.

**NOTE:** Enabling the parallel port does not conflict with using Ethernet or Token Ring communication with the Fiery X3e.

**Ignore EOF Character**—Available only if Enable Parallel Port is selected, this option specifies that the Fiery X3e should ignore end-of-file (EOF) messages. Select this option to print PostScript files in binary format (not ASCII); under normal circumstances, this option should not be selected. When this option is selected, the Fiery X3e uses the parallel port timeout value to determine when the end of the file has been reached.

**Parallel Port Timeout (seconds)**—Available only if Enable Parallel Port is selected, this setting determines how long the Fiery X3e waits without receiving data from the parallel port before deciding that the current job is complete. Until the timeout, the Fiery X3e cannot receive new jobs through the parallel port, but it can continue to receive network print jobs.

## Protocols

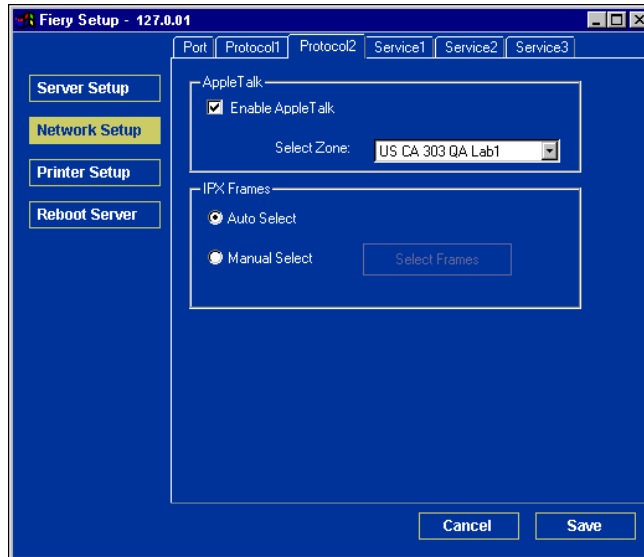


You can change AppleTalk, IPX/SPX, and TCP/IP protocol settings for the Fiery X3e. Change these settings on the Protocol1 and Protocol2 tabs.

# 5

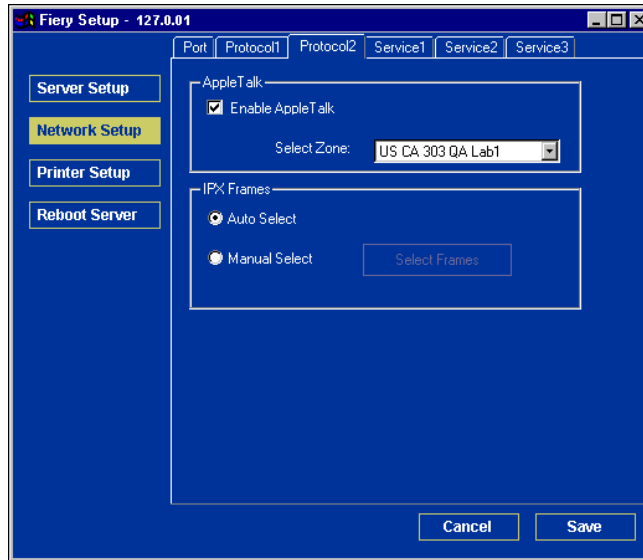
## AppleTalk

The current AppleTalk zone is displayed.



### IPX/SPX

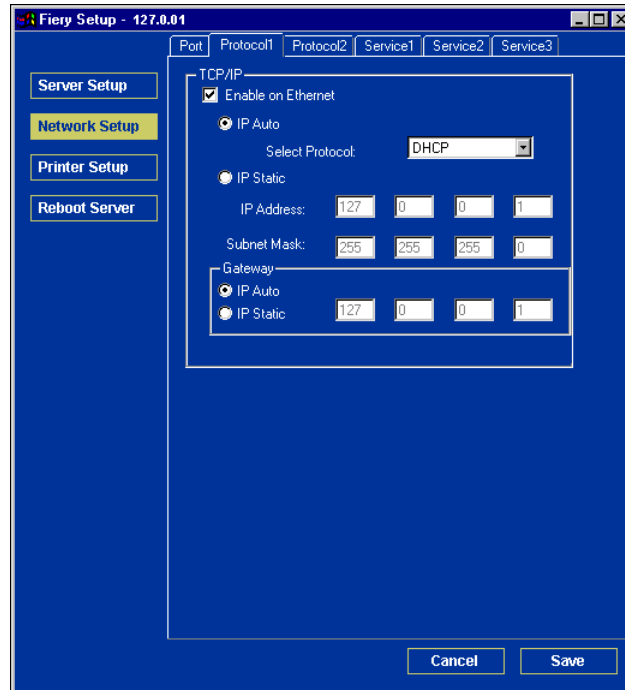
Use this option to specify IPX/SPX frame types.



The Fiery X3e supports the following Ethernet frame types for IPX/SPX: Ethernet 802.2, Ethernet 802.3, Ethernet II, and Ethernet SNAP. You can also allow the Fiery X3e to select the frame type automatically.

## TCP/IP

Specify TCP/IP settings. The current settings for IP address, subnet mask, and default gateway address are displayed. For information about setting up printing with TCP/IP, see Chapter 2.



The Fiery X3e requires a unique, valid IP address. You can set a static address or specify that the Fiery X3e obtains the IP addresses automatically.

**NOTE:** If you specify the DHCP or BOOTP protocol, the Fiery X3e restarts when you save your changes and exit Setup. Allow the Fiery X3e to restart and return to Idle before printing a Configuration page or proceeding with any other operations.

To set the subnet mask, enter one of the following values:

255.0.0.0 if the IP address starts with a number less than 128

255.255.0.0 if the IP address starts with a number from 128 through 191

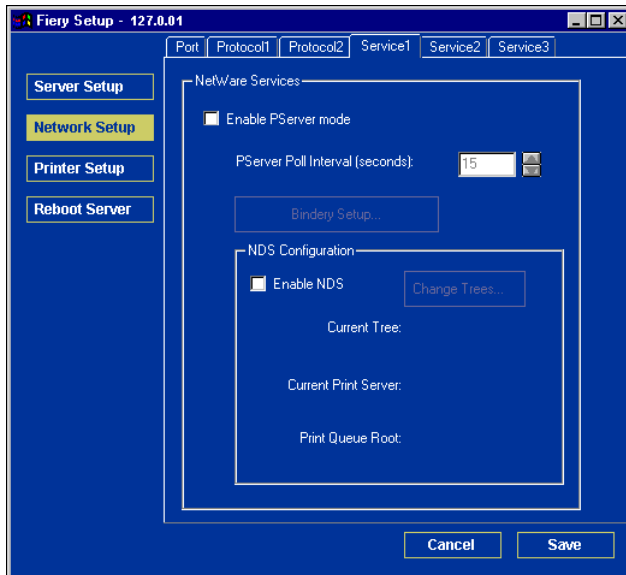
255.255.255.0 if the IP address starts with a number greater than 191

**NOTE:** Confirm the subnet mask setting with your network administrator before proceeding. In some cases, the required setting may be different from those listed.

If your TCP/IP network has a gateway and users outside the gateway plan to print to the Fiery X3e using TCP/IP, enter the gateway address.

**NOTE:** The Fiery X3e stores assigned IP addresses, even if you later disable TCP/IP. If you must assign the Fiery X3e IP address to another device, first set the Fiery X3e address to a null address.

## Services



You can configure the following network services:

- LPD Printing (TCP/IP)—enable or disable LPD print services.
- NetWare Printing (PServer)—specify NDS and Bindery services (see [page 5-16](#)).
- Windows Print Sharing (SMB)—enable or disable SMB print services.
- HTTP Support (WWW)—enable or disable support for Fiery WebTools.
- Port 9100—enable or disable support for Port 9100 printing.
- E-mail Service—specify the Fiery E-mail Service.
- FTP Service—enable or disable FTP services.

## LPD Printing

Fiery Setup - 127.0.0.1

Port Protocol1 Protocol2 Service1 Service2 Service3

Server Setup

Network Setup

Printer Setup

Reboot Server

Windows Printing Service

Enable Windows Printing Service

Server Name:

Comment:

Domain or Workgroup:

Auto IP

Use WINS Server

IP Address:

Enable Services

Enable LPD Printing Service

Enable Port 9100

Port 9100 Queue:

Enable FTP Services

Enable Web Services

Enable IPP

Cancel Save

**Enable LPD Print Services**—Select to enable or disable LPD printing services.

**Enable Web Services**—Select to enable or disable web services.

**Enable FTP Services**—Select to enable or disable FTP services.

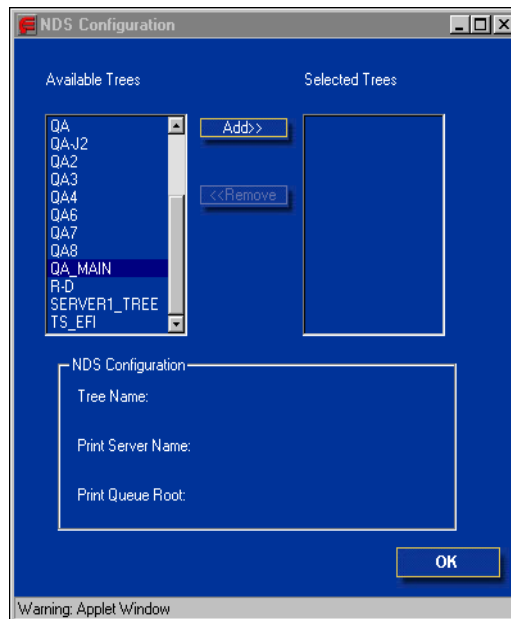
### NetWare Printing options

Use this option to specify NDS and Bindery services.

---

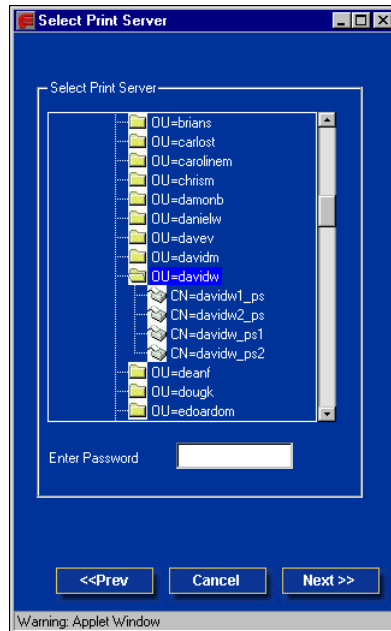
#### TO SPECIFY THE NDS TREE SETTING FROM REMOTE FIERY X3E SETUP

1. Select Enable NDS and click Change Trees.
2. In the NDS Configuration dialog box that appears, double-click an NDS tree in the Available Trees list.



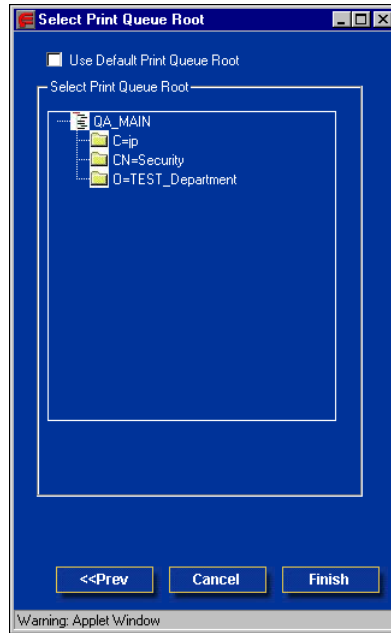
3. In the Select User Login window, select Use Default User Information or enter your password, and click Next.
4. Navigate to the NDS container, select it, and click Next.

If necessary, enter the password.



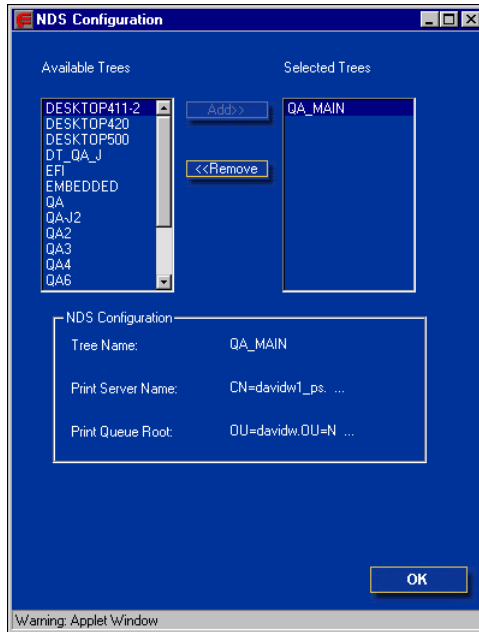
# 5

5. Select Use Default Print Queue Root or navigate to the Print Queue Root and click Finish.



**6. Click OK.**

The NDS Configuration dialog box appears, displaying information about the print server.



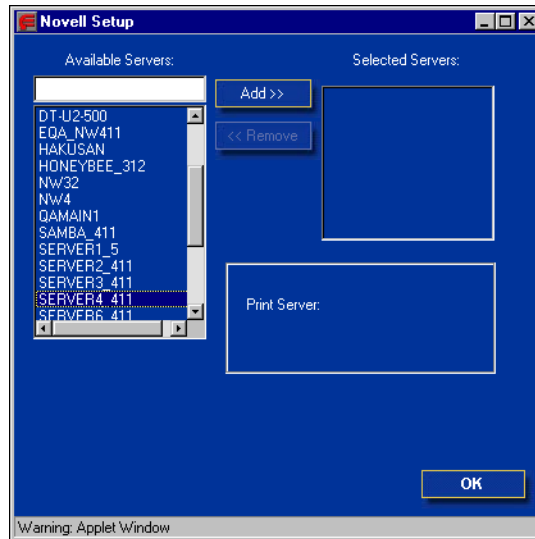
### Bindery Setup

Use this option to specify Bindery services.

---

#### TO ADD BINDERY CONNECTIONS FROM REMOTE FIERY X3E SETUP

1. Select Enable PServer mode from the Service1 tab.
2. Click Bindery Setup.
3. Select a file server from the Available Servers list.



If the File Server User Name and Password dialog box appears, enter the appropriate user name and password to log on to the selected file server.

**4. Select a print server from the list and click Finish.**

If necessary, enter the appropriate password in the Print Server Password dialog box to log on to the selected file server.

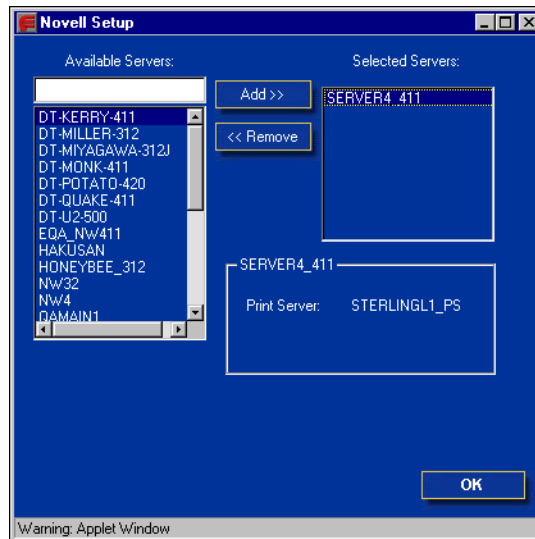
The name of the newly added server appears in the Selected Servers list.



**5. When you finish adding servers, click Finish.**

**TO REMOVE BINDERY CONNECTIONS FROM REMOTE FIERY X3E SETUP**

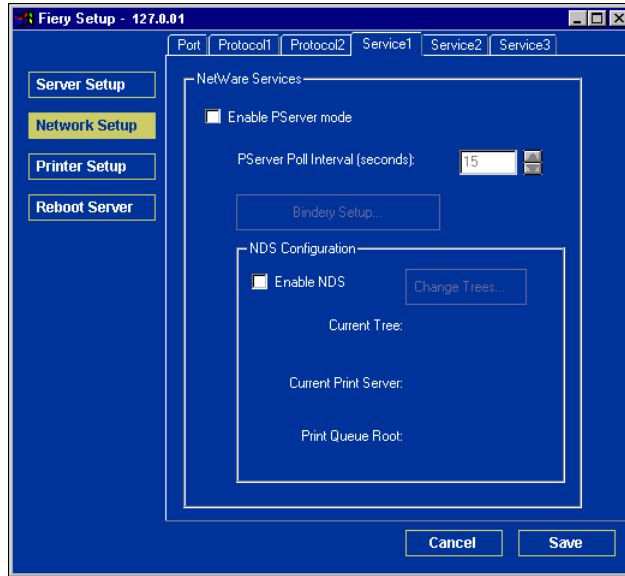
1. **Select Enable PServer mode from the Service1 tab.**
2. **Click Bindery Setup.**  
The Novell Setup dialog box appears.
3. **Make your selection in the Selected Servers list.**



4. **With the file server selected in the Selected Servers list, click Remove.**
5. **Click OK.**

### PServer Poll Interval

Specify the polling interval (in seconds) for NetWare printing.



## Windows print sharing with Server Message Block (SMB)

To set up the Windows printing service, text fields may include uppercase letters, numerals, spaces, and the following characters:

- \_ . ~ ! @ # \$ % ^ & ( ) { } \ ' , "

**NOTE:** Lowercase letters are *not* allowed, except in the Comment field.

The screenshot shows the 'Fiery Setup - 127.0.01' window with the 'Network Setup' tab selected. The 'Windows Printing Service' section is active, showing the following configuration options:

- Enable Windows Printing Service
- Server Name:
- Comment:
- Domain or Workgroup:
- Auto IP
- Use WINS Server
- IP Address:

The 'Enable Services' section is also visible, with the following options:

- Enable LPD Printing Service
- Enable Port 9100
- Port 9100 Queue:
- Enable FTP Services
- Enable Web Services
- Enable IPP

Buttons for 'Cancel' and 'Save' are located at the bottom right of the window.

**Enable Windows Printing Service**—Select to enable SMB (Server Message Block), the file and printer sharing protocol built into Windows. Enabling SMB lists the Fiery X3e on the network so that Windows clients can print to a particular print connection (Hold, Print, or Direct) on the Fiery X3e without any other networking software. For information on setting up a Windows client for Windows printing, see the *User Software Installation Guide*.

**NOTE:** Windows (SMB) printing runs over TCP/IP, so you must configure TCP/IP on the Fiery X3e and any computers that use Windows printing.

**Server Name**—Enter the server name that will appear on the network. You can use the same name as the server name assigned to the Fiery X3e (see [page 5-3](#)), or choose another name.

**Comment**—Enter information about the printer, up to 15 characters. These comments are listed in the Properties of the Fiery X3e in Network Neighborhood. Lowercase letters are allowed in this field.

**Domain or Workgroup**—Enter the workgroup or domain where the Fiery X3e should appear.

**Auto IP**—If you have already enabled IP Auto in Protocol Setup, and selected either DHCP or BOOTP as the protocol for obtaining an IP address, select this option to allow the Fiery X3e to obtain the IP address automatically for the WINS Name Server. If you do not select this option, use the following two options to specify whether to use a WINS Name Server and its IP address.

**Use WINS Server**—Select to use a WINS name server. Broadcasts from SMB devices cannot be routed beyond their original network segment without a WINS name server. Setting up the WINS name server is outside the scope of this manual. To find out if a name server is available, contact your network administrator.

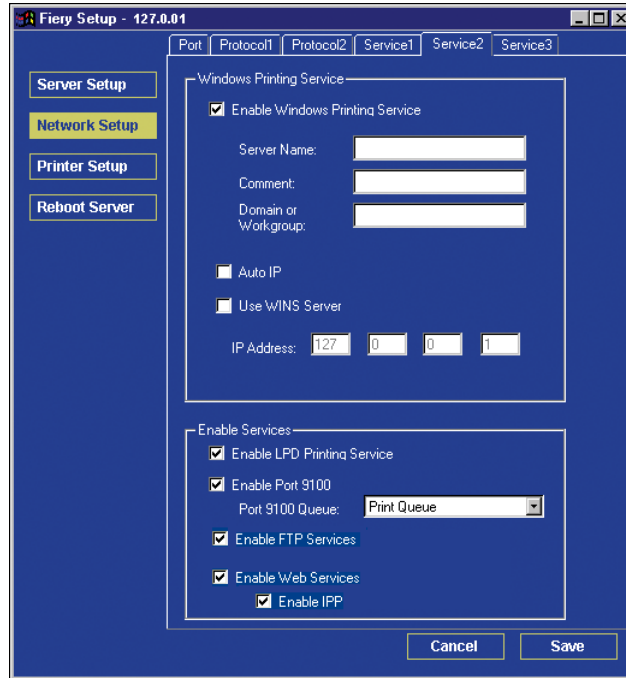
**IP Address**—Enter the IP address of the WINS name server.

### HTTP Connection Support (WWW)

**Enable Web Services**—Select to make the WebTools available to users (see [page 6-2](#)). TCP/IP must already be enabled on the Fiery X3e and on users' computers. The WebTools include WebSpooler, Status, WebLink, WebSetup, WebDownloader, WebScan, and Installer. A Java-enabled Web browser and a valid IP address are required for each user. For details on supported browsers and workstation requirements, see the *User Software Installation Guide*.

**Enable Internet Printing Protocol (IPP)**—Select Yes to enable printing with the IPP. You must enable Web Services. For information on setting up users' computers to use IPP printing, see the *User Software Installation Guide*.

## Port 9100 printing



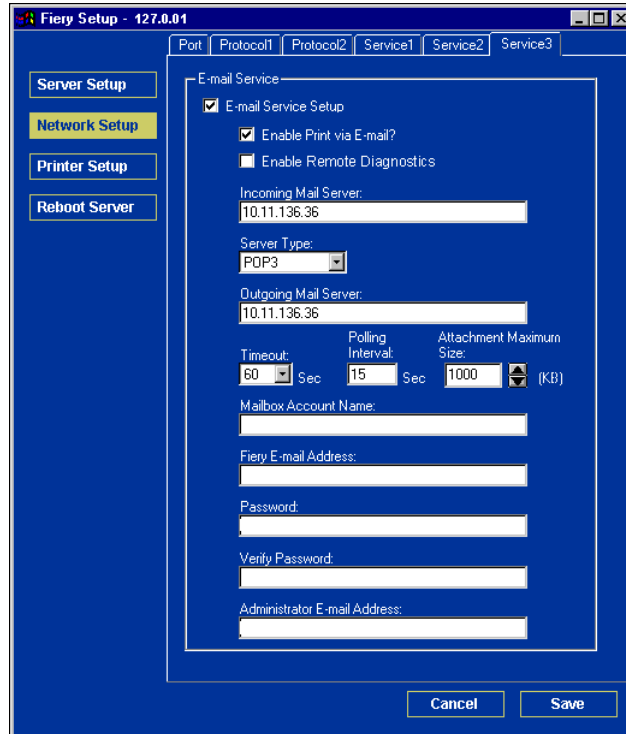
**Enable Port 9100**—Enables applications to open a TCP/IP socket to the Fiery X3e at Port 9100 to download a print job.

**Port 9100 Queue**—Allows you to attach Port 9100 to any of the published Fiery X3e print connections.

### FTP Services

**Enable FTP Services**—Allows users to send jobs to an FTP server where other users can retrieve it.

## E-mail Service Setup



**E-mail Service Setup**—Enabling e-mail services is required for all e-mail client services.

**Enable Print via E-mail**—If selected, print jobs sent via e-mail are accepted. If this option is cleared, print jobs sent via e-mail are ignored.

**Enable Remote Diagnostics**—Selecting this option allows the service technician to remotely run diagnostics through e-mail.

**Incoming Mail Server**—Specify the IP address or server name that communicates the appropriate mail server and contact information to the Fiery X3e.

**Server Type**—Specify the e-mail protocol used to communicate with the incoming mail server.

**Outgoing Mail Server**—Specify the IP address or server name that communicates the appropriate mail server and contact information to the Fiery X3e.

**NOTE:** You must define both an Incoming and Outgoing mail server. If an Outgoing mail server is not defined, the E-mail Service assumes that the incoming and outgoing server names are the same.

**Timeout (seconds)**—Specify the maximum amount of time that will elapse as the Fiery X3e attempts to connect to the mail server.

**Polling Interval**—Specify how often the Fiery X3e checks the mail server for relevant e-mail.

**Attachment Maximum Size**—Specify the maximum file size of a scan for the Fiery X3e to send as an attachment. If the scan file exceeds this maximum, the file is automatically sent as a URL.

**Mailbox Account Name**—Enter the mailbox name specified on the mail server. This name tells the Fiery client mail service which account contains e-mail messages for the Fiery X3e.

**NOTE:** The account name entered in this field must first be specified on the mail server by the administrator.

**Fiery E-mail Address**—Enter the name of the e-mail account. For example, pat@test.com.

**Password**—Enter a password for accessing the mailbox account on the mail server.

**Verify Password (remote Setup only)**—Reenter your password.

**Administrator E-mail Address**—Enter the user name specified in Fiery X3e setup.

The administrator authorizes a unique e-mail address to remotely administer e-mail services. If an error occurs while you are performing a scan to e-mail, E-mail Service sends an error message to the Administrator E-mail Address specified. The administrator can authorize additional administrator e-mail addresses from this e-mail address.

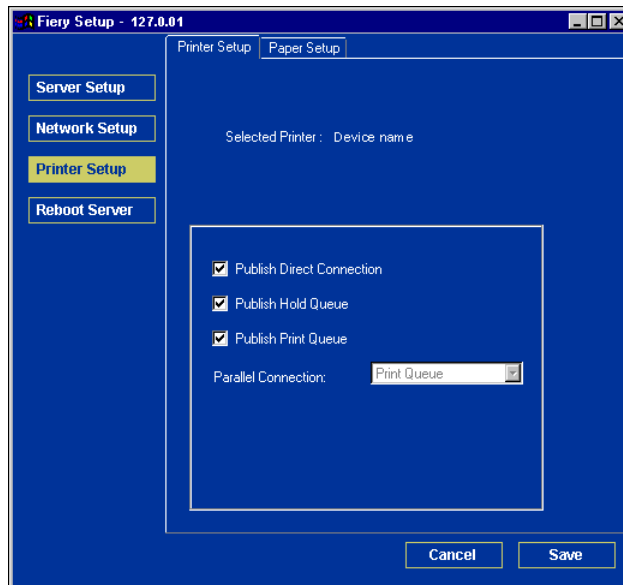
## Printer Setup options

From this dialog box, you can access the Printer Setup and Paper Setup tabs.

**NOTE:** In the following illustrations, “Device name” represents the model of the copier connected to the Fiery X3e, which is 31C-M.

## Printer connections

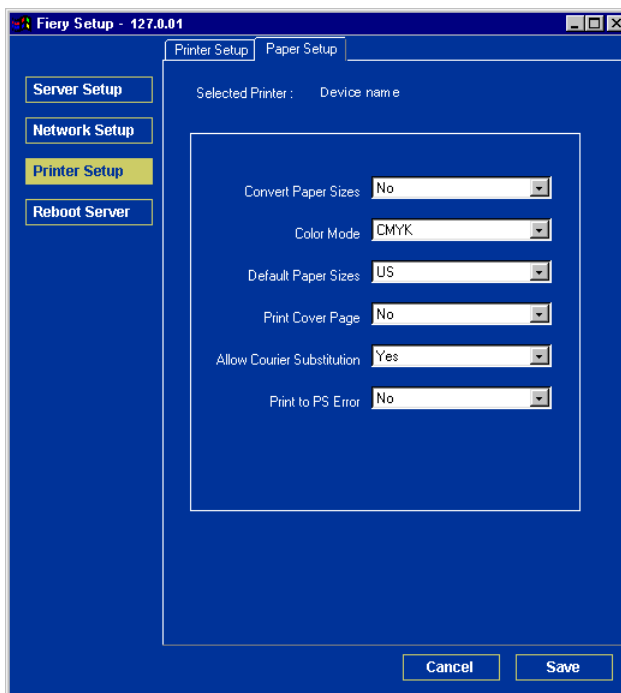
Specify whether to publish the Print queue, Hold queue, or Direct connection.



## PS (PostScript) Setup

The options in the PS Setup menu in local Setup are located on the Paper Setup tab in remote Setup.

**NOTE:** In the following illustrations, “Device name” represents the model of the copier connected to the Fiery X3e, which is 31C-M.



**Convert Paper Sizes**—Specify whether to convert paper sizes automatically to the default paper sizes specified. For example, if you select Letter/11x17->A4/A3, a letter size job is automatically printed on A4 paper.

**Color Mode**—Specify whether to print color (CMYK) or Grayscale images to the Fiery X3e by default. CMYK gives you full color prints. Select CMYK as the Color Mode before performing calibration on the Fiery X3e. Grayscale converts all colors to shades of gray.

**Default Paper Sizes**—Specify whether to print on US paper sizes (for example, Letter, Legal, Tabloid), or Metric paper sizes (for example, A4 or A3) by default. When no paper size is defined within a PostScript file, jobs are printed on Letter-size paper if you select US, or A4 paper if you select Metric.

**Print Cover Page**—Specify whether the Fiery X3e prints a cover page (job summary) at the end of each print job. If you choose Yes, each print job is followed by a page containing the name of the user who sent the job, the document name, the server name, the time the job was printed, the number of pages printed, and the status of the job. If a PostScript error occurs and the Print to PS Error option is set to Yes, the Cover Page lists the PostScript error message instead of the job status.

**Allow Courier Substitution**—Specify whether to substitute Courier for unavailable fonts. When you choose Off, jobs requiring fonts unavailable on the Fiery X3e hard disk generate a PostScript error and do not print. This setting does not apply to PDF files; font substitution occurs automatically for PDF files.

**Print to PS Error**—Specify whether the Fiery X3e should print the available portion of a print job when it encounters a PostScript error. In general, this option should be No.

- When you choose No, the printing of the entire job is canceled when a PostScript error occurs, but the processed portion of the job and the PostScript error information are stored on the Fiery X3e. You can view the job and the error information from the job management tools.
- When you choose Yes, the portion of the job processed before the error occurred is printed.

## Setting up printing groups

The Fiery X3e administrator can arrange users into groups and allow members of a group to print only if they supply a password at print time. This method of printing is known as Printing Groups, or Member Printing.

This section describes how to set up groups and passwords. For information about how to enable Printing Groups, see [page 4-5](#). For more information about using the Printing Groups feature, see the *Printing Guide*.

**NOTE:** Printing Groups is not supported with Windows 2000/XP.

**NOTE:** To change the Group Name or Group Password settings for a job that a user has already sent from the printer driver, use Command WorkStation, Fiery Spooler, or WebSpooler.

---

### TO SET UP PRINTING GROUPS AND PASSWORDS

1. Select **Printing Groups** from the **Command WorkStation Server** menu.
2. Click **Create**.
3. In the **Group Name** field, enter a group name for the printing group.
4. In the **Password** field, enter a password for the group, and reenter the password in the **Verify Password** field.
5. Click **Add** to move the new group into the window.

---

### TO CHANGE PRINTING GROUPS AND PASSWORDS

1. Select **Printing Groups** from the **Command WorkStation Server** menu.
2. Select the printing group name in the **Printing Groups Setup** dialog box and click **Modify**.
3. Make the necessary changes.
4. Click **OK**.

---

**TO REMOVE PRINTING GROUPS AND PASSWORDS**

1. **Select Printing Groups from the Command WorkStation Server menu.**
2. **Select the printing group name in the Printing Groups Setup dialog box and click Remove.**
3. **Click OK.**

## Exiting Setup

When you have finished specifying Setup options, click OK and close the Setup dialog box. You are notified that the Fiery X3e must be restarted for the new settings to take effect. You can restart now or later. If Command WorkStation is running, the connection to the Fiery X3e is lost and you must log on again when the server restarts.

After you have completed Setup and restarted the Fiery X3e for the first time, install the user software for printing on remote workstations, as described in the *User Software Installation Guide*. To confirm the network connection and your Setup, print a test job from a remote workstation.

## Printing the Configuration page

The Configuration page lists the settings in effect for the current Setup. After you have performed Setup, print a Configuration page to confirm your settings.

The other pages you can print from Command WorkStation include the test page, Job Log, color charts, and Font List. For information on these Fiery X3e pages, see the *Job Management Guide*.

---

**TO PRINT THE CONFIGURATION PAGE**

1. **In Command WorkStation, choose Print Pages from the File menu.**
2. **Click Configuration.**
3. **Click Print.**

Post the current Configuration page near the server for quick reference. Users need the information on this page, such as the current printer default settings.

## Chapter 6: Configuring Fiery WebTools

Fiery WebTools allow you to manage your Fiery X3e remotely from the Internet or from your company's intranet. The Fiery X3e has its own home page, from which you can select a variety of functions, including Status, WebSetup, WebSpooler, WebLink, Installer, WebScan, and WebDownloader.

For more information on using Fiery WebTools, see the *Printing Guide*.

### Configuring the Fiery X3e and clients for WebTools

The WebTools provide access to many Fiery X3e functions via the Internet (or intranet), providing additional flexibility in remote management. You can access the WebTools from a Windows or Mac OS computer.

---

#### TO SET UP WEBTOOLS ON THE FIERY X3E

1. In Fiery X3e Network Setup, enable TCP/IP.
2. Set a valid, unique IP address for the Fiery X3e, and then set the subnet mask. Set a gateway address, if required.
3. Enable Web Services.
4. In Fiery X3e Printer Setup, confirm that the Print Queue is published.

---

#### TO SET UP WEBTOOLS ON A COMPUTER

1. Enable TCP/IP networking.
2. Assign the workstation a valid, unique IP address and subnet mask, and a gateway address, if required.
3. Install an Internet browser that supports the Java language and frames.

Make sure Java is enabled. For more information on supported browsers and WebTools requirements, see the *User Software Installation Guide*.

**TO ACCESS WEBTOOLS**

1. **Start your Internet browser.**
2. **Enter the IP address or DNS name of the Fiery X3e.**
3. **Press Enter.**

The Fiery X3e home page appears.

4. **Click the Fiery WebTools icon in the lower-left corner of the window.**
5. **Click the name of a particular WebTool.**
6. **Click Configure to enable specific WebTools for users.**

## Setting up WebTools

In order for network users to access and use WebTools, you must set certain Fiery X3e options in Network Setup and Printer Setup. You also must prepare each user's workstation to communicate with the Fiery X3e over the Internet or intranet.

For more information about Network Setup, see [Chapter 2](#).

---

**TO SET UP WEBTOOLS ON THE FIERY X3E**

1. **Set Enable Ethernet to Yes in Network Setup > Port Setup > Ethernet Port Setup.**
2. **Set Enable TCP/IP for Ethernet to Yes in Network Setup > TCP/IP Ethernet Setup.**
3. **Set Enable Web Services to Yes in Network Setup > Network Service Setup > Web Services Setup.**
4. **Exit Network Setup, and choose OK to Save Changes.**
5. **Exit Printer Setup, and choose OK to Save Changes.**

# 6

## Setting the WebLink destination

You can change the pre-set WebLink destination; this function requires the Administrator password, if one has been set.

---

### TO CHANGE THE WEBLINK DESTINATION

1. **Start your Internet browser.**
2. **Enter the IP address or the DNS name of the Fiery X3e.**  
The Fiery X3e home page appears.
3. **Click the Fiery WebTools icon in the lower-left corner of the window.**
4. **Enter the Administrator password, if required, and click OK.**
5. **Press the Control key (Mac OS) or Ctrl key (Windows) as you click WebLink.**  
The Update WebLink dialog box appears.
6. **Enter the new WebLink address (URL) and click OK.**



## Chapter 7: Administering the Fiery X3e

This chapter provides tips on managing Fiery X3e printing.

### Administrator functions

Administration features are included with the user software and are built into the Fiery X3e. The following table describes where to find information on these features (page references refer to this manual).

For these operations	And these tasks	See
Setting up network servers	Setting up servers to manage and share printing services	This manual
Connecting and setting up the Fiery X3e	Connecting the Fiery X3e and performing Fiery X3e Setup	This manual
	Setting up the Fiery X3e to allow user access to WebTools	This manual <i>Release Notes</i>
Setting up the printing environment	Setting printer defaults, including modes, imaging, paper size handling, error handling	Printer Setup, pages 4-35,5-30 PS Setup, pages 4-37 and 5-31 <i>Color Guide</i> <i>Printing Guide</i>
Setting up the job environment	Publishing the Direct connection, Print queue, or Hold queue to end users on various platforms	Printer Setup, Chapter 2, pages 4-35 and 5-30
Protecting integrity of users' jobs, maintaining consistency of Fiery X3e settings	Setting the Administrator password	Passwords, page 7-2 Chapter 3
Setting up all new users	Setting up printing, including installing PostScript printer drivers and PPD files for the printer Installing optional user software Preparing users to access WebTools	This manual <i>Release Notes</i>
Getting users started with printing	Printing to the Fiery X3e Setting job-specific options Using Fiery utilities	<i>Printing Guide</i>  <i>Job Management Guide</i>

For these operations	And these tasks	See
Controlling the job flow	Using WebTools, Command WorkStation and Fiery utilities and for managing job priorities, tracking current jobs, canceling jobs, printing jobs in the Hold queue, and reprinting from the Printed or Hold queue	<i>Printing Guide</i> <i>Job Management Guide</i> <i>Release Notes</i>
Job accounting	Viewing, printing, and exporting the Job Log, user notes Setting automatic printing and clearing for the Job Log	<i>Job Management Guide</i>
Color management	Printing with CMYK simulations Printing color samples and swatch pages Installing color profiles	<i>Color Guide</i> <i>User Software Installation Guide</i>
Maintaining optimal Fiery X3e performance	Tips Deleting jobs, clearing queues	page 7-9, also <i>Job Management Guide</i>
Troubleshooting	Troubleshooting Fiery X3e Setup	Appendix A

## Setting passwords

You can set or change the Administrator password for the Fiery X3e. Anyone with the Administrator password can modify the Setup options, and control the flow and order of print jobs with the job management tools.

When the Fiery X3e is installed, there is no password. If you do not create an Administrator password, users are not required to enter a password to modify the Setup or use the administrator functions in the job management tools. If an Administrator password has been set previously, you are required to enter it when you run Setup. Use the up and down arrow buttons to select the characters and the left and right arrow buttons to move between them (see “Types of Setup screens” on page 4-4).

## Passwords from the Control Panel

For more information on Administrator access privileges, see [page 3-3](#). For information on controlling print jobs with the job management tools, see the *Job Management Guide*.

**NOTE:** The Operator password can be set and changed only from Fiery WebSetup, local Setup, or Command WorkStation.

---

### TO CHANGE THE FIERY X3E PASSWORD

1. Scroll through the main Setup menu and choose **Change Password**.
2. Enter and confirm the password, as follows.

#### **New Password**

Use the up and down arrow buttons to select the characters and the left and right arrow buttons to move between them. Enter characters from left to right, since the left arrow button is also a Delete key. The password can be any combination of letters and numbers up to 19 characters. Choose OK when you are done. Be sure to keep track of the password.

**NOTE:** The only way to remove a password that you cannot remember is to reinstall the system software.

#### **Verify New Password**

Reenter the new password, exactly as you entered it initially. If you make a mistake, you are prompted to enter the password again. The new password is effective after you save changes and restart the Fiery X3e.

## Passwords

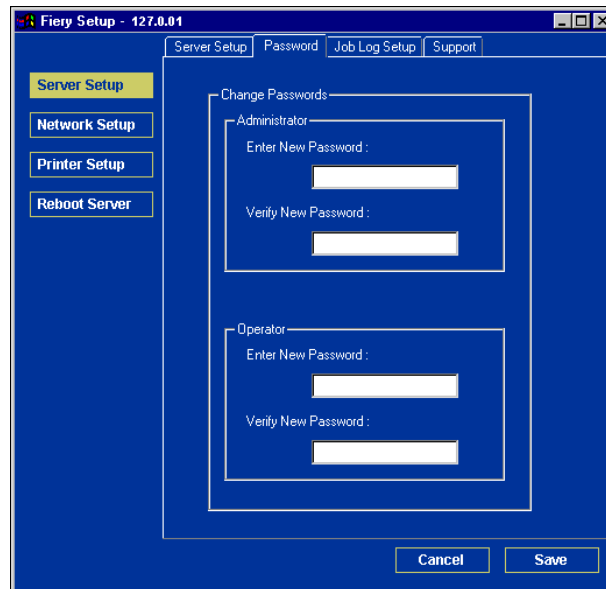
You can set, change, and remove passwords for the Fiery X3e. These passwords, specific to the Server process, have different uses than the Windows NT Administrator and Operator passwords. Keep track of the passwords you set for each.

**Administrator**—Controls access to Setup; Administrator privileges also include Operator privileges.

**Operator**—Controls access to job management functions via the job management tools.

**NOTE:** For more information on Fiery X3e passwords and the access privileges they allow, see [page 3-3](#).

By default, *no* passwords are set. If you do not specifically set passwords, all users will have access to important functions such as Setup (including setting passwords) and job control. We *strongly recommend* that you set at least an Administrator password to protect the Fiery X3e from unauthorized changes to Setup.



---

**TO SET OR CHANGE A PASSWORD**

1. **Select the password you want to change.**
2. **Type the password in both the Enter New Password and Verify New Password fields.**

Passwords are case-sensitive and can be any combination of letters and numbers up to 19 characters. You must enter the password *exactly* the same way both times. The new password remains in effect until you change it.

---

**TO REMOVE A PASSWORD**

1. **Select the password you want to delete.**
2. **Delete the asterisks (\*) in both the Enter New Password and Verify New Password fields.**

If you forget the Administrator password, contact your authorized service representative to reinstall Fiery X3e system software. This clears the Administrator password and allows you to set a new one.

## Clearing the Fiery X3e

The Clear Server command allows you to clear all queued print jobs from the Fiery X3e—jobs in the Fiery X3e Print, Hold, and Printed queues. Jobs can also be deleted, either individually or as a group, using the job management tools. Clear Server also clears all jobs archived on the Fiery X3e hard disk, the index of archived jobs, and finally, all Fiery FreeForm masters and the index of Fiery FreeForm masters.

To clear the Fiery X3e, scroll through the Setup menu and choose Clear Server. You are asked to confirm your selection. If the Administrator password has been set, you are prompted to enter it.

## Managing address books

The E-mail Service feature allows an administrator to import a list of e-mail addresses to the Fiery X3e by sending e-mail messages to the Fiery X3e.

**NOTE:** E-mail messages can be sent only from an administrator account.

The Fiery X3e supports the following address books:

- **User**—a generic address book used primarily for Scan to E-mail. This address book is used for outgoing e-mail only.
- **Admin**—includes users with administrative access. Administrative access allows you to modify the address book, get the current address book from the Fiery X3e, and cancel or status any print job.
- **Print**—includes users who have print access. Only users whose e-mail addresses are in the Print address book are authorized to submit jobs via e-mail to the Fiery X3e. Unauthorized users receive an e-mail reply that their job was not accepted by the Fiery X3e for printing.
- **Fax**—an address book used for Scan to Internet FAX. This address book is used for outgoing e-mail only.

E-mail Service also allows the administrator to overwrite the address book, append new addresses, remove addresses, and retrieve current addresses on the Fiery X3e.

When a print job is submitted via e-mail, the Fiery X3e first checks the Print address book. If the user's e-mail address does not match any entry in the Print address book, the job will not print. Instead, the user will receive an e-mail stating that the print job was not accepted.

The default wildcard character "@" is stored in the Print address book. This allows any user to print to the Fiery X3e until the administrator adds the first entry in the Print address book.

The administrator can manage the address books by sending an e-mail to the Fiery X3e with command codes in the Subject and Message fields. The Fiery X3e responds by e-mail to these commands with information about each request. When managing address books, see the following table.

Task	Administrator subject field	Administrator message field	Fiery e-mail response subject field	Fiery e-mail response message field
To retrieve a specific address book	#GetAddressBook <i>name of address book</i>  For example: #GetAddressBook Admin		Address Book <i>name of address book</i>  For example: Address Book Admin	List of addresses in the specified address book.
To add an address to an address book	#AddAddressTo <i>name of address book</i>  For example: #AddAddressTo Print	name@domain or "display name" <name@domain>	Added to Address Book <i>name of address book</i>  For example: Added to Address Book Print	List of addresses added to the address book.  The Fiery X3e also lists any addresses that cannot be added and includes the reason.
To clear an address book	#ClearAddressBook <i>name of address book</i>  For example: #ClearAddressBook User		Address Book <i>name of address book</i> cleared or Address Book <i>name of address book</i> not cleared  For example: Address Book User cleared	If the address book is not cleared, the reason is given.

Task	Administrator subject field	Administrator message field	Fiery e-mail response subject field	Fiery e-mail response message field
To delete an address from an address book	#DeleteAddressFrom <i>name of address book</i>  For example: #DeleteAddressFrom User	name@domain or “display name” <name@domain>	Removed from Address Book <i>name of address book</i>  For example: Removed from Address Book User	Deleted Address 1 Deleted Address 2 The Fiery X3e also lists any addresses that cannot be deleted and includes the reason.
To receive help for Fiery X3e e-mail services	#Help		RE: Help	Provides troubleshooting e-mail syntax.

## Printing a Configuration page from the Control Panel

The Configuration page lists all the settings in effect in the current Setup.

After you have finished running Setup, print a Configuration page to confirm your settings. You can also print the Configuration page from Command WorkStation (for details, see [page 5-34](#)).

After you make changes to Setup and choose Exit Setup, the Fiery X3e restarts. This allows the Fiery X3e to recognize the new settings and display them properly on the Configuration page. Allow the Fiery X3e to restart and return to Idle before printing a Configuration page. In particular, the restart is necessary if you specified the DHCP or BOOTP protocol to obtain an IP address automatically for the Fiery X3e.

Post the current Configuration page near the server for quick reference. Users need the information on this page, such as the current printer default settings.

Other pages you can print from the Control Panel of the Fiery X3e or from Command WorkStation include the Test Page, Font List, and Job Log. For information on these pages, see the *Job Management Guide*.

---

**TO PRINT THE CONFIGURATION PAGE****1. Make sure the information screen on the Control Panel reads Idle.**

If Printing or RIPping appears, the Fiery X3e is processing, and you must wait until the system finishes and reaches the Idle state.

**2. Press the Utility button on the Control Panel.****3. In the Touch Panel, press the Controller Detail button.****4. Press the Menu button.****5. Select Print Pages.****6. Choose Configuration.**

## Maintaining optimal Fiery X3e performance

The Fiery X3e does not require maintenance. Beyond the obvious requirements of servicing and maintaining the copier and replenishing consumables, you can improve the overall performance of your system by doing the following:

- **Make the best use of your network connections**

Publish only connections that will be used; the Fiery X3e constantly checks all published connections, even if they are inactive. Match the NetWare polling interval and the number of queues or connections to the demand for printing.

Review the published connections by printing a Configuration page. Eliminate the connections that are not being used. It is easy to re-establish them when needed.

- **Leave less urgent jobs to times when there is less network traffic or printing**

You can print recurring print jobs or jobs that are not urgent to the Hold queue. At low-traffic times, the administrator or a user of the job management tools with Operator privileges can move (or copy) all the Hold queue jobs to the Print queue for printing.

- **Reduce unnecessary Two-way Communication**

Large numbers of users running Fiery utilities, especially with frequent updates, may have a significant effect on Fiery X3e performance.

- **Make sure you have adequate disk space on the Fiery X3e**

Periodically review the list of jobs in the Hold queue, and the number of jobs being retained in the Printed queue.

An administrator can print or delete jobs that are in the Printed queue and Hold queue. Consider printing or offloading inactive jobs. If disk space on the Fiery X3e is frequently low, you can disable the Printed queue (in Server Setup) and choose not to publish the Hold queue (in Printer Setup).

To move or remove queued jobs, use the job management tools. When you free up disk space by removing inactive jobs, new jobs are spooled and printed more quickly.

## **Shutting down, rebooting, and restarting the Fiery X3e**

Generally, you can leave the Fiery X3e and the copier running all the time. This section describes how to reboot, shut down, and restart the Fiery X3e when necessary.

### **Shutting down and rebooting the Fiery X3e**

You may need to shut down the Fiery X3e for service, or reboot the entire Fiery X3e system. When you do so, fonts that have been downloaded to the hard disk are not deleted. Print jobs in the Hold queue, the Printed queue, and jobs that have been processed but not printed are not deleted; they will be available for printing when you restart the Fiery X3e.



---

#### TO SHUT DOWN THE FIERY X3E

1. Make sure that no jobs are being processed or printed (the activity light should be off).
2. Press the Utility button on the Control Panel.
3. In the Touch Panel, press the Controller Detail button.
4. Press the Menu button.
5. Use the down arrow to scroll to Shut Down.
6. Select Shut Down System.
7. It is now safe to turn off the copier using the main power switch.

**NOTE:** After turning off the copier, wait at least three seconds before turning it back on.

---

#### TO REBOOT THE FIERY X3E

1. Press the Utility button on the Control Panel.
2. In the Touch Panel, press the Controller Detail button.
3. Press the Menu button.
4. Use the down arrow to scroll to Shut Down.
5. Select Reboot System.

The Fiery X3e will reboot.



## Restarting the Fiery X3e

Restarting the Fiery X3e resets the Fiery X3e system software, but does not reboot the entire system. Network access to the Fiery X3e is temporarily interrupted and all currently processing jobs are aborted.

---

### TO RESTART THE FIERY X3E

1. Turn on the copier using the main copier power switch.
2. Press the Utility button on the Control Panel.
3. In the Touch Panel, press the Controller Detail button.
4. Press the Menu button.
5. Use the down arrow to scroll to Shut Down.
6. Select Restart Server.



## Appendix A: Troubleshooting

This chapter provides troubleshooting tips.

### Troubleshooting the Fiery X3e

Startup diagnostics are described in the *Installation and Service Guide* for service technicians. Contact your authorized service/support center if you see startup error messages on Command WorkStation or if the Fiery X3e does not reach the Idle state.

### Troubleshooting during Setup from the Control Panel

The following section explains some error and alert messages you may see during Setup that might not be self-explanatory.

#### Network Setup messages

After this Setup screen	This message	Means
Enable AppleTalk (Network Setup>Protocol Setup>AppleTalk Setup)	No AppleTalk zone found.	The Ethernet network cable is not attached to the connector on the Fiery X3e, or the network cable is not plugged into the hub or network. If your AppleTalk network has zones, and you want to specify a zone for the Fiery X3e, you must connect the network cable to the Fiery X3e before performing AppleTalk Setup. Could also mean the AppleTalk network does not have zones. Zones are not required for printing to the Fiery X3e. Press OK to continue.
Protocol Setup or Service Setup (Network Setup)	You must first enable a network port.	Enable at least one network port (Ethernet) in Port Setup before beginning Protocol Setup or Service Setup.
Frame Type selection (Network Setup>Protocol Setup>IPX/SPX Setup)	Invalid frame size.	The network hub is not connected to a Novell machine when the Fiery X3e tries to bind.
	Warning! IPX network number is zero.	No other IPX machine can be found on the network, or the network hub is not connected to the network when the Fiery X3e tries to bind. When this occurs, the network number defaults to zero.



After this Setup screen	This message	Means
Enable NDS (Network Setup>Service Setup>PServer Setup>NDS Setup)	No NDS trees found.	No NDS trees were found on the Novell network. Check to see that the frame types on the Fiery X3e are properly configured.
Select NDS Tree (Network Setup>Service Setup>PServer Setup>NDS Setup)	Warning! Selecting a new NDS tree deletes Bindery setup.	You have previously connected the Fiery X3e to a different NDS tree. NetWise supports only a single NDS tree connection. To avoid a potential conflict with an existing tree connection (for example, if the connection was made through a NetWare 4.x server in emulation mode), all bindery settings will be deleted.  If you choose OK, and choose Yes in the following message (Delete Bindery setup and continue?), bindery settings are deleted and have to be re-entered in Bindery Setup.  To avoid deleting the bindery settings, press the Menu key, or select OK and choose No in the following message (Delete Bindery setup and continue?).  Repeat NDS Setup without changing the NDS tree, or exit to Bindery Setup to review your current bindery settings.
Navigating NDS tree (Network Setup>Service Setup>PServer Setup>NDS Setup)	___ is empty.	The chosen container contains no sub-containers or objects relevant to the current mode of navigation.
Bindery Setup (Network Setup>Service Setup>PServer Setup>Bindery Setup)	If you also plan to use NDS, set up NDS before Bindery.	No NDS settings are present. You are reminded to perform NDS Setup before Bindery Setup in case your network includes both NDS and bindery servers.
Select File Server From List (Network Setup>Service Setup>PServer Setup>Bindery Setup)	Error. Cannot open bindery connection to NDS server.	Select this server through NDS setup or disable NDS and select it through bindery.
	No NetWare file server found.	No file server was found when Fiery X3e queried the network to create a list of supported servers or a list of all servers.  Check cable connections and make sure the NetWare server is turned on.



<b>After this Setup screen</b>	<b>This message</b>	<b>Means</b>
Enter First Letters of Server Name (Network Setup>Service Setup>PServer Setup>Bindery Setup)	File server name not found. Try again?	No file server with those letters was found when Fiery X3e queried the network. Check the name of the NetWare file server, check cable connections, and make sure the NetWare server is turned on.
View Server List, Edit Connection (Network Setup>Service Setup>PServer Setup>Bindery Setup)	No file server is selected.	No file server has been added in Bindery Setup.
Add File Server (Network Setup>Service Setup>PServer Setup>Bindery Setup)	All connections used. Remove server?	You have added the maximum number of bindery servers, which is eight. You now have the option of disconnecting one of those servers, so as to add another.



After this Setup screen	This message	Means
Add Server, Enter Your Login Name, Enter Your File Server Password (Network Setup>Service Setup>PServer Setup>Bindery Setup)	No NetWare print server found.	No print server was found when Fiery X3e queried the file server you selected. You must configure a print server and a print queue for every NetWare file server that will handle Fiery X3e print jobs (see <a href="#">page 2-9</a> ).
Any Bindery Setup screen	Novell error code, followed by a message.	Novell NetWare has reported an error. Command WorkStation reports the error number and displays a brief message. For the most common errors (listed in the following table), a screen is displayed that allows you to retry the action that evoked the error, such as adding a server. If that is not possible, you are prompted to notify the Novell administrator, who will need to troubleshoot the network. Consult NetWare Administrator documentation for further explanation of Novell error codes.

In Network Setup, when you configure the IPX (Novell) connection, the Fiery X3e queries the network for Novell file servers and trees, and attaches to them temporarily. If a guest login is enabled, it is used. If not, you are prompted to log in from Command WorkStation.

If the selected NetWare file server or tree does not have a guest account, or if the guest account has expired or been disabled by the NetWare supervisor, you are prompted to notify the IPX (Novell) administrator. In that case, there are two options:

- Enable a guest account on the NetWare server or tree for the purpose of setup.
- Log in with a different account. At the ENTER LOGIN NAME screen, change the default name (guest) to supervisor or enter another valid login name. When you are prompted for a password, enter the correct password for the account you named.



For any Novell error, make sure:

- Your IPX (Novell) network is connected to the Fiery X3e.
- The NetWare server you are trying to access is running.
- The Novell network has been configured with at least one print server and queue for the Fiery X3e.
- You have the appropriate permissions and login information, including user name and password, if necessary.
- The Fiery X3e is configured with the correct frame types for communication with the desired Novell servers.

### Novell error messages

Novell error	Cause	Suggested action or exit
220 Guest account not available.	The guest account, which you have chosen for initial login, has expired or has been disabled by the NetWare supervisor.	Enable a guest account on the NetWare server for the purpose of Setup. Alternatively, log in to a different account. In the ENTER LOGIN NAME screen, change the default name (guest) to supervisor or another valid login name. When you are prompted for a password, enter the correct password for the account you named.
222 Unable to log in to server. Password has expired for login name.	The server has connected to a file server, but is unable to log in to the file server or print server because the password has expired for the login account name or the named print server.	Select a different login account or print server. The error screen exits to the File Server Login screen (if login to file server failed) or NetWare Print Server screen (if login to Print Server failed). Pressing the Menu button returns to the PServer Setup screen.
252 Unable to log in to server. Login does not exist.	The server has connected to a file server, but is unable to log in to the server because the selected login account does not exist on the file server.	Select a different login account. The error screen exits to the File Server Login screen. Pressing the Menu button returns to the PServer Setup screen.



Novell error	Cause	Suggested action or exit
<p>255 Unable to connect to file server. File server is down or out of connections.</p>	<p>The Novell file server is down or out of connections. This error occurs while the server is trying to connect to the requested file server.</p>	<p>Select a different file server (or try to get someone else to log off). Pressing the Menu button returns to the PServer Setup screen.</p>
<p>nnn Notify IPX (Novell) Administrator.</p>	<p>Indicates other network errors when the Fiery X3e is already connected to a file server. Something unexpected has happened and the user generally cannot recover without intervention of the network administrator. Error #197 indicates that you have exceeded the number of login attempts permitted for this account on the NetWare file server. Error #255 usually indicates a hard failure.</p>	<p>Notify the Novell administrator and report the error number. The error screen exits to the PServer Setup screen.</p>



## Runtime error messages

For error messages related to canceling jobs and printing, including the Disk Full message and alerts to load media, see the *Job Management Guide*. These messages are reported by the job management tools.

You can turn on PostScript error reporting as a print option from Mac OS applications.

## Printer not found

Most failures to find a printer on the network are due to conflicting or missing name or address settings for the Fiery X3e. You must enter names in specific places. The required names are:

- TCP/IP host name (also known as the DNS name), which is defined by your organization.

Enter the host name as the Server Name in Fiery X3e Setup.

- Remote printer (internal machine) name. Use one of the following:

print  
hold

**NOTE:** If you change the DNS name (also known as the TCP/IP host name) of the Fiery X3e, you must reconfigure one of the Fiery utilities on each workstation.



See the following table for the appropriate name.

In this location	For this item	IPX/SPX networks	TCP/IP networks	See
Server Setup	Server Name option	Administrator defines name	Administrator defines name	<a href="#">page 4-4</a>
Windows NT hosts file	host name	—	DNS name (TCP/IP host name)	<a href="#">page 2-1</a>
Windows NT setup for TCP/IP	lpd host name	—	DNS name (TCP/IP host name)	<a href="#">page 2-1</a>
	Name of printer on lpd host machine	—	print or hold	
UNIX /etc/printcap file (BSD)	rp line	—	print or hold	<a href="#">page 2-16</a>
Solaris	lpadmin queuename	—	print or hold	
NetWare administration utility	print queues (must be all lowercase and in English)	_direct _print _hold	—	<a href="#">page 2-7</a>
Add New Server dialog box, when configuring a Fiery utility	New Device	Utilities are not supported over IPX/SPX.	31C-M	<i>User Software Installation Guide</i>
	Server Name	Utilities are not supported over IPX/SPX.	DNS name (TCP/IP host name)	

**Cannot connect to Fiery X3e with Fiery utilities**

If users cannot connect to the Fiery X3e, check the following:

- Fiery X3e Setup—the appropriate network protocol must be enabled, with the correct parameters (for example, for TCP/IP, the IP address), and you must publish either the Print queue or Hold queue.

You can check these settings quickly by printing a Configuration page.

- On the client workstation—the appropriate network protocol(s) must be loaded, and your Windows directory should contain a configured Efnl.ini file.

**Cannot connect to the Fiery X3e with Command WorkStation**

If there is a problem connecting to the Fiery X3e, an error message is displayed.

The problem can occur when:

- The Fiery X3e is initially turned on
- The Fiery X3e restarts
- You have changed settings affecting the server address and have not reconfigured the connection to the server

If you see this problem, try the following solutions, in this order:

- A remote workstation running Fiery utilities or WebTools may be interfering by obtaining status information. If possible, close the remote application, and try to connect again.
- Restart the Command WorkStation software and try to connect again.
- Check the configuration of the connection and modify it, if necessary, or delete the Efnl.ini file and start over with the process of configuring the connection, as described in the *User Software Installation Guide*. For Windows9x/Me, the Efnl.ini file is located in the \WINDOWS directory. For Windows NT 4.0/2000/XP, the Efnl.ini file is located in the \WINNT directory.
- Restart the Fiery X3e.

For information on other error conditions, see the *Job Management Guide*.



# Index

## Numerics

- 100BaseT connector 1-12
- 10BaseT 1-12
- 8-pin RJ-45 connector 1-12

## A

- access level scenarios 3-6
- access to network and software 3-1
- accessing Setup
  - from Control Panel 4-2
  - from Windows computer 5-1
- Account Name option, E-mail Setup 4-32
- Adapters/Ports information, Setup 5-7
- Add File Server, Bindery
  - Setup 4-22, 4-23, 5-20
- administrator
  - features of server 4-47
  - functions 7-1 to 7-2
  - installing the server 1-2
  - managing print jobs 7-1
  - password 7-2
- Administrator E-mail Domain Name option, E-mail Setup 4-33
- Administrator E-mail User Name option, E-mail Setup 4-33
- Administrator password
  - changing from Control Panel 7-2
  - changing from Windows computer 7-5
  - for setting the WebLink
    - destination 3-5, 6-3
  - privileges 3-3
- Allow Courier Substitution
  - option 4-38, 5-32
- AppleTalk 1-5
  - network diagram 1-5
  - protocol setup 4-11, 5-9
  - server name 4-5, 5-3
  - with Windows NT 2-2

- AppleTalk Setup
  - from Control Panel 4-11
  - from Control Panel, summary 4-8
  - from Windows computer 5-10
- AppleTalk zone 4-11, 5-10
- Auto Clear Job Log Every 55 Jobs
  - option 4-48, 5-5
- Auto Print Job Log Every 55 Jobs
  - option 4-48, 5-5

## B

- binary data, printing via parallel port 4-10, 5-8
- Bindery file servers
  - connecting 4-23, 5-20
  - defined 2-7
  - emulation mode 2-7, 4-17, 5-14
  - setting up context 2-11 to 2-12
- Bindery Setup
  - adding Bindery connections 4-23, 5-20
  - on server 4-22 to 4-26, 5-20
  - removing Bindery
    - connections 4-26, 5-22
    - requirements for NetWare server 4-22
- Black Overprint option 4-43
- BOOTP protocol 4-11, 4-12
- broken LCD 4-2
- Broker, NDPS printing 2-14

## C

- changing
  - Administrator password 7-2, 7-5
  - Bindery connection 4-25
  - host name or DNS name A-7
  - Novell print server, Bindery 4-22, 4-25
- characters
  - used on Control Panel 4-5, 5-4

- Choose File Server for editing Bindery connection 4-25
  - Chooser
    - AppleTalk 4-5, 5-3
  - choosing a Bindery Server to connect 4-23, 5-20
  - Clear Frame Types, IPX/SPX Setup 4-16
  - Clear Server option 7-5
  - clearing the Job Log 4-48, 5-5
  - client setup
    - Fiery WebTools 6-1
    - network printing 2-4 to 2-6, 2-12 to 2-16
    - overview 1-2
  - CMYK printing by default 4-38
  - CMYK Simulation Method option 4-42
  - CMYK Simulation Profile option 4-42
  - Color Mode option 4-38
  - Color Setup 4-41
  - Command WorkStation xi
    - problems connecting to server A-9
  - Comment option, Windows printing 4-28, 5-25
  - Configuration page
    - determining IPX frame types bound 4-16
    - printing 5-34, 7-8
    - troubleshooting connection problems A-9
  - Configure button, Fiery WebTools 6-2
  - configuring network clients
    - NetWare 2-12
    - Windows NT 2-5
  - configuring network servers
    - NetWare 2-8, 2-9
    - UNIX 2-18
    - Windows NT 2-3
  - configuring servers
    - from Control Panel 4-9 to 4-49
    - from Windows computer 5-1 to 5-34
    - preparing for 3-9
  - connected Novell servers, Bindery 4-25
  - connecting
    - copier interface cable 3-9
    - network cable 1-11
    - parallel cable 1-12
    - to a Bindery file server 4-23, 4-24
    - to multiple Bindery file servers 4-22
  - control levels 3-6
    - scenarios 3-6
    - setting 3-1
  - Control Panel
    - accessing Setup 4-2
    - Change Password option 4-47
    - Clear Server option 7-5
    - Color Setup 4-41
    - illustrated 4-2
    - Job Log Setup 4-47
    - Network Setup 4-7
    - Printer Setup 4-35
    - PS (PostScript) Setup 4-37
    - Server Setup 4-4
  - Convert Paper Sizes option 4-37, 5-31
  - Courier font, substitution with 4-38, 5-32
  - cover page, printing at end of job 4-38, 5-32
- D**
- date, setting 4-5, 5-3
  - Default Paper Sizes option 4-37, 5-32
  - Delete Scan Jobs option 5-4
  - destination, Fiery WebLink 6-3
  - device name 5-3, 5-30, 5-31, A-8
  - DHCP protocol 4-11, 4-12
  - diagrams of network setup 1-4 to 1-10
  - Direct connection
    - described 3-1, 3-2
    - publishing 4-36, 5-30
    - required for downloading fonts 3-2
  - disconnecting a Bindery file server 4-22, 4-26
  - disk space 7-10
  - DNS (Domain Name Server) 2-2, 2-4, A-7

DNS setup 4-14  
 Domain or Workgroup option, Windows printing 4-29, 5-25  
 downloading fonts, Direct connection requirement 3-2  
 drivers, Point and Print 4-28

## E

Edit Connection, Bindery Setup 4-25  
   explained 4-22  
 E-mail Service Setup option 5-28  
 E-mail Setup 4-30  
 Enable AppleTalk option 4-11  
 Enable Auto IP Configuration option 4-12  
 Enable E-mail Services option 4-30  
 Enable Ethernet option 4-9, 5-7  
 Enable FTP Services 5-27  
 Enable IPP option 4-29, 5-26  
 Enable LPD option 4-17, 5-15  
 Enable NDS option 4-18, 5-16  
 Enable Parallel Port option 4-10, 5-8  
 Enable Port 9100 Print Services option 4-30, 5-27  
 Enable Print via E-mail option 5-28  
 Enable Printed Queue option 4-6, 5-3  
 Enable Printing Groups option 4-5  
 Enable PServer option 4-17  
 Enable TCP/IP for Ethernet option 4-12, 5-12  
 Enable Web Services option 4-29, 5-26  
 Enable Windows Printing option 4-27, 5-25  
 enabling  
   client utilities 4-12  
   Fiery WebTools 4-29, 5-26  
 end-of-file (EOF) character, parallel communication 4-10, 5-8  
 Enter First Letters of Server Name (search option), Bindery Setup 4-23

Enter Your File Server Password, Bindery Setup 4-24  
 Enter Your Login Name, Bindery Setup 4-24  
 Enter Your Print Server Password, Bindery Setup 4-24, 4-26  
 error messages 4-38, A-1  
   “No AppleTalk zone found” 4-11  
   during Setup A-1  
   during startup A-4  
   NetWare A-4  
   runtime A-7  
 Ethernet 1-12  
   frame types 5-11  
   network 2-7  
   Port Setup 4-9  
 Ethernet Setup from Control Panel 4-8  
   Ethernet Speed 4-9  
   in Port Setup 4-9  
   in Protocol Setup 4-12  
 Ethernet Setup from remote Setup Port Setup 5-7  
 Ethernet Speed option 4-9, 5-7  
 Exit Bindery Setup 4-26, 4-35  
   explained 4-22  
 exiting Setup, Control Panel 4-49

## F

Fiery E-mail Domain Name option, E-mail Setup 4-32  
 Fiery E-mail User Name option, E-mail Setup 4-32  
 Fiery WebDownloader, described 3-5  
 Fiery WebLink 3-5  
   setting the destination 6-3  
 Fiery WebSetup, described 3-5  
 Fiery WebSpooler  
   described 3-4  
   reprinting jobs in Printed queue 4-6

- Fiery WebTools 6-1 to 6-2
    - enabling 4-29, 5-26
    - enabling only certain WebTools 6-2
    - Installer 3-5
    - setting up 6-2
    - Status 3-4
  - File Server 5-20, 5-21, 5-22
  - File Server Login option, Bindery 4-24
  - File Server Password (Bindery) 4-24
  - File Server, Bindery 5-20
  - file types and parallel port setup 4-10, 5-8
  - font substitution 4-38, 5-32
  - frame types supported
    - AppleTalk 4-15
    - IPX/SPX 4-15
    - IPX/SPX, Ethernet 4-15, 5-11
    - TCP/IP 4-15
  - From List option (adding a file server) 4-23
  - FTP Setup 4-34
- G**
- gateway address, setting 4-13
  - General Setup options 5-3 to 5-5
  - guest login (Novell)
    - in Bindery Setup 4-23
    - in Network Setup A-4
  - Guest privileges (no password) for WebSpooler 3-4
- H**
- Hold queue 4-36, 5-30
    - described 3-1, 3-2
  - host name 2-2, 2-3, 2-4, A-7
    - database 2-2
- I**
- Ignore EOF Character option 4-10, 5-8
  - improving server performance 7-9
  - Incoming Server option, E-mail Setup 4-32, 5-28
  - Installer WebTool, *see* Fiery WebTools
  - installing server on network 1-2
  - Internet
    - accessing server with Fiery WebTools 3-4
    - WebLink access 6-3
  - Internet Printing Protocol, enabling 4-29
  - IP address
    - assigning automatically 4-12
    - for Ethernet Setup 4-13
    - for WINS Name Server 5-26
    - required for TCP/IP printing 2-17
  - IPP Setup 4-29
  - IPX (Novell) 2-7 to 2-12
    - Bindery file server, connecting 4-22
    - NDS (Novell Directory Services) 2-11, 4-17, 5-14
    - NetWare client setup 2-12
    - NetWare server setup 2-9
    - network diagram 1-6
    - overview of printing 2-8
    - setting up printing 2-9
    - terms used to describe 4-22
    - tips for experts 2-8
  - IPX/SPX
    - polling interval 5-23
    - protocol setup 4-15
    - selecting frame types 4-16
    - Setup 4-15
    - summary of Setup options 4-8
- J**
- Java to support Internet browser 6-1
  - Job Log
    - clearing automatically 4-48
    - clearing jobs from 7-5
    - default options 4-48
    - defined 4-48
    - printing automatically 4-48
    - setting the page size used 4-49, 5-5

- Job Log Setup
    - from Control Panel 4-48
    - from Windows computer 5-5
  - job management tools
    - defined 3-1
    - deleting jobs with 7-5
    - printing Job Log 4-48
  - Jobs Saved in Printed Queue option 4-6, 5-4
- L**
- LCD 4-2
  - lpd (TCP/IP) 2-16
    - printing 4-17, 5-15
    - setup summary 2-17 to 2-18
- M**
- Mac OS computers
    - on AppleTalk network 1-5
    - with Windows NT 2-2
  - maintaining server performance 7-9
  - maximum server connections, Bindery 4-22
  - Member Printing 4-5
  - messages, *see* error messages
  - multiple Bindery file servers,
    - connecting 4-22
- N**
- naming the server 4-5, A-7
  - NDPS (Novell Distributed Print Services) 2-13
  - NDPS Manager 2-13
  - NDS (Novell Directory Services) 2-11, 4-17, 5-14
    - defined 2-7
    - enabling 4-18
    - print queue subtree 4-21
    - Setup on server 4-18 to 4-21
    - setup requirements 4-18
  - NDS Setup 4-18
  - NDS tree
    - browsing 4-18, 4-19
    - browsing to print queue root 4-20
    - browsing to Print Server 4-20
    - browsing to User Login object 4-19
    - password 4-19
  - NETADMIN 2-10
  - NETBEUI 1-7
  - NetWare
    - Bindery and NDS on the same
      - network 4-17
    - Bindery Services 4-17
    - Directory Services 4-17, 5-14
    - error messages A-4, A-5
    - NDS (Novell Directory Services) 2-11
    - print server poll interval 4-27
    - setting up network on the Control
      - Panel 4-17
  - NetWare File Server, Bindery
    - connecting 4-22, 4-23
    - finding available servers 4-23
    - removing connection 4-26
    - selecting for editing 4-25
    - setting up more than one 4-22
  - NetWare Print Console 2-12
  - NetWare Print Server poll interval 4-27
  - NetWare Print Server, Bindery 4-24, 4-25
    - changing the selection 4-22, 4-25
    - connecting 4-24, 4-25
    - password 4-24
  - NetWare Server Poll Interval 4-27
  - NetWare, supported networking
    - environments 2-7
  - network
    - AppleTalk 1-5
    - cable 3-9
    - installation diagrams 1-2 to 1-10
    - installation summary 1-3

- IPX (Novell) 1-3, 1-4, 1-6
- lpd (TCP/IP) 1-3, 1-4, 1-9
- protocols supported 1-1
- using multiple protocols 1-4
- with Windows NT 1-7

- Network Setup
  - exiting 4-9
  - from Control Panel 4-7 to 4-35
  - from Windows computer 5-6 to 5-27
  - part of initial Setup 5-1
  - troubleshooting A-4

- New Password option 7-3

- Novell, *see* NetWare

## O

- Operator password 3-4, 7-3
  - privileges 3-3
- Outgoing Mail Server option, E-mail Setup 5-29
- Outgoing Server option, E-mail Setup 4-32

## P

- paper size used by default 4-37
- Paper Sizes option 5-32
- parallel port
  - cable 1-12
  - connecting 1-12
  - diagram 1-10
- Parallel Port Setup from Control Panel 4-8, 4-10
  - options 4-10
  - summary 4-8
- Parallel Port Setup, remote 5-8
  - timeout setting 5-8
- Password, E-mail Setup 4-32, 5-29
- passwords 7-4
  - Administrator privileges 3-3
  - Administrator, changing 7-2
  - Bindery print server 4-24
  - Fiery WebTools 3-4
  - for WebLink destination 3-5

- for WebSpooler 3-4
- NDS Tree 4-19
- Novell file server, Bindery 4-24
- Operator privileges 3-3
- Print Server 4-20
  - setting 3-3

- PC compatibles
  - on IPX (Novell) network 1-6
  - on TCP/IP network 1-9

- PCL (Printer Control Language) Setup 4-39, 4-44

- PCONSOLE (NetWare utility) 4-24

- PDF files, font substitution in 4-38, 5-32

- Point and Print Drivers option 4-28

- Polling Interval
  - E-mail Setup 4-33, 5-29

- polling interval for NetWare print jobs 4-27, 5-23

- Port 9100 printing 5-27

- Port 9100 Queue option 5-27

- Port 9100 Setup 4-30

- Port Setup from Control Panel 4-8
  - Ethernet Setup 4-9

- Port Timeout in Seconds option 4-10, 5-8

- portable computers 1-12

- PostScript error 4-38

- PostScript files, printing 4-10, 5-8

- PostScript Setup, *see* PS Setup

- Print Cover Page option 4-38, 5-32

- Print queue 3-2, 4-6, 4-36, 5-30
  - described 3-1, 3-2
  - publishing 4-36

- print queues 4-6

- NDS 4-21

- NetWare server (Bindery) 4-23

- Print Server

- adding 5-21

- selecting 5-21

- Print Server password 4-20

- Print Start Page option 4-5, 5-4

- Print Start Page, printing 5-4

- Print to PostScript Error option 4-38, 5-32
  - Printed queue 3-2, 4-6
  - printer
    - connection failure A-7
    - not found A-7
    - not in Chooser A-7
  - Printer Agent, NDPS 2-13
  - Printer Setup
    - from Control Panel 4-35
    - from Windows computer 5-30
    - part of initial Setup 5-1
    - Printed queue options 5-3
  - printing
    - CMYK by default 4-38
    - Configuration page from Control Panel 7-8
    - connections 3-1
    - connections and queues 4-35
    - cover page for each job 4-38
    - directly to parallel port 4-10, 5-8
    - Job Log automatically 4-48
    - PostScript files 4-10, 5-8
    - reprinting previously printed jobs 3-2
    - start page at startup 4-5, 5-4
  - printing connections 3-1
  - Printing Groups 5-33
  - printing groups
    - defining members of 5-33
    - defining passwords for 5-33
    - editing printing groups and passwords 5-33
    - removing printing groups and passwords 5-34
  - problems, *see* troubleshooting
  - protocols
    - for assigning IP address
      - automatically 4-12
    - network 1-1
    - setting up 4-11, 5-9
      - See also* AppleTalk, IPX, IPX/SPX, TCP/IP
  - PS (PostScript) Setup 4-37, 5-31
  - PServer
    - defined 4-17
  - PServer Setup
    - options 4-17
  - Publish Direct Connection
    - option 4-36, 5-30
  - Publish Hold Queue option 4-36, 5-30
  - Publish Print Queue option 4-36, 5-30
  - publishing connections, overview 3-1
  - Pure Black Text/Graphics option 4-43
- ## Q
- queues
    - clearing all 7-5
    - publishing 4-36, 5-30
- ## R
- Remove File Server, Bindery Setup 4-26
    - explained 4-22
  - removing
    - Bindery file server connection 4-26
  - Rendering Style option 4-42
  - reprinting jobs 3-2
  - RGB Separation option 4-43
  - RGB Source option 4-41
  - RJ-45 connector 1-12
  - root login 2-18
- ## S
- safety 4-2
  - Save Changes
    - Color Setup, Control Panel 4-43
    - Job Log Setup, Control Panel 4-46, 4-49
    - Network Setup, Control Panel 4-9, 4-35
    - PCL Setup 4-41
    - Printer Setup, Control Panel 4-36, 4-38
    - Setup, Control Panel 4-6
  - Search Name option (adding a file server) 4-23

- Select File Server option 4-23
  - Select Frame Types option 4-16
  - Select NDS Tree option 4-18
  - Select protocol (Setup option) 4-12
  - selecting
    - Bindery servers 4-25
    - default paper size 4-37, 5-32
  - server
    - back view showing connectors 1-11
    - Control Panel 4-2
    - display window 4-2
    - maintaining and improving
      - performance 7-9
    - naming 4-5, 5-3
    - network installation summary 1-3
    - power switch 1-11
    - Setup, *see* Setup
  - Server Name option 4-5, 5-3
  - Server Name option, Windows
    - printing 4-28, 5-25
  - Server Setup 3-7
    - exiting 5-34
    - from Control Panel 4-4
    - from Windows computer 5-3
    - part of initial Setup 5-1
  - Server Type option, E-mail Setup 4-32, 5-28
  - Service Setup options 4-17, 5-14
  - setting up NDS connection 2-11
  - Setup
    - PCL Setup 4-39, 4-44
    - screen types 4-4
    - See also* Server Setup, Network Setup, Printer Setup, PS Setup, Job Log Setup
  - Setup from Control Panel
    - accessing 4-2
    - administrative functions 4-47
    - Color Setup 4-41
    - error messages A-1
    - Job Log Setup 4-48
    - Network Setup 4-7
    - Port Setup 4-9
    - Printer Setup 4-35
    - Protocol Setup 4-11 to 4-15
    - Server Setup 4-4
    - Service Setup 4-17
      - summary 4-1
  - SMB, *see* Windows printing
  - Spot Color Matching option 4-43
  - Start Page, printing 4-5
  - Status WebTool, *see* Fiery WebTools
  - Subnet Mask option 4-13
  - superuser 2-18
  - Support option 5-4
  - Supported Servers, Bindery Setup 4-25
  - System Date option 4-5, 5-3
  - System Time option 4-5, 5-3
- ## T
- TCP/IP
    - adding server to network 2-3
    - Ethernet Setup from Control Panel 4-12, 4-45
    - host name A-7
    - http protocol 1-1
    - lpd printing 5-15
    - lpd protocol 1-1
    - nbt protocol 1-1
    - network diagram 1-9
    - protocol setup 4-11
    - published connections 4-35
    - setting up printing from Windows NT 2-2 to 2-6
    - settings 5-12
    - Setup from Control Panel 4-11
      - summary 4-8
      - with UNIX workstations 2-16
    - terminology, Novell 4-22
    - time, setting 4-5, 5-3
    - Timeout option, E-mail Setup 4-33, 5-29
    - Transmission Speed (Ethernet) option 5-7

troubleshooting  
 Command WorkStation connection  
   problems A-9  
 connection to printer fails A-7  
 Printer not found in the selection list of  
   Fiery utilities A-9  
 Printer not found—TCP/IP or IPX  
   networks A-7  
 Setup, Control Panel A-1  
 twisted pair cable 1-12

**U**

UNIX  
 managing print jobs 2-19  
 on TCP/IP network 1-9, 2-16  
 printcap file A-8  
 printing to server 2-19  
 remote printer name A-8  
 setting up printing to server 2-18  
 tips for experts 2-16  
 Use Character Set option 4-5, 5-4  
 Use WINS Name Server option 4-28  
 utilities  
   enabling protocol on the server 4-12  
   required print connections 4-35

**V**

View Server List, Bindery Setup 4-25  
 explained 4-22

**W**

warning  
   display window breakage 4-2  
 Web Services Setup 4-29, 5-26  
 WebDownloader, *see* Fiery WebDownloader  
 WebLink, *see* Fiery WebLink  
 WebSetup, *see* Fiery WebSetup  
 WebSpooler, *see* Fiery WebSpooler  
 WebTools, *see* Fiery WebTools  
 Windows 9x/Me  
   printing in Windows NT  
     environment 2-5  
 Windows computers, printing without a  
   Windows NT 4.0 server 2-6  
 Windows NT  
   network environment 1-7  
   setting up Windows NT server 2-3  
   with TCP/IP 1-7, 1-9  
 Windows  
   printing 1-1, 2-6, 4-27, 5-14, 5-25  
     domain issues 3-8  
     selecting drivers for 4-28  
     setting domain or workgroup 4-29, 5-25  
 WINS IP Address option 4-28, 5-26  
 WINS name server 4-28

