

Supplement

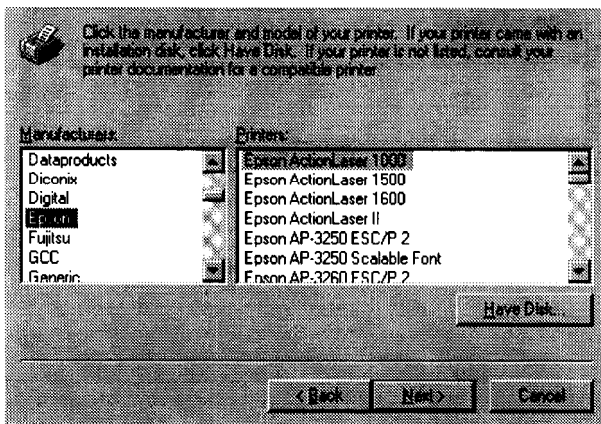
This sheet covers new information for Windows NT 4.0 users only.

Installing the Printer Driver for Windows NT 4.0

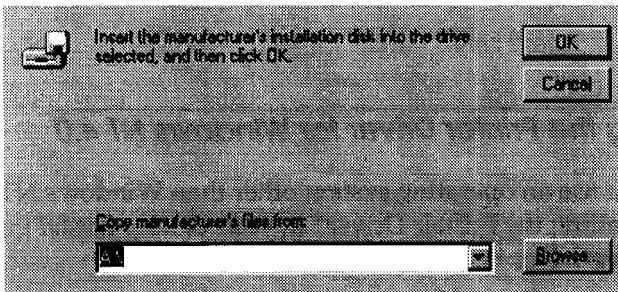
If you use an operating system other than Windows NT 4.0, see “Installing the Printer Driver” in your *Getting Ready!* guide for printer driver installation information.

Follow the steps below to install the printer driver.

1. Make sure Windows NT 4.0 is running.
2. Insert the EPSON driver disk into drive A (or B).
3. Click Start, point to Settings, and then click Printers.
4. Double-click Add Printer, then follow the instructions on the screen.
5. When the following dialog box appears, click the Have Disk button.



6. Make sure the correct floppy drive directory (A: \ or B: \) is shown in the Copy manufacturer's files from box, and click OK.



7. Select your printer as the Printer Model and click Next. Then follow the on screen instructions.

Note:

If your printer is EPL-5500+, select EPL-5500 when you see the screen below.

