

TOSHIBA

SERVICE MANUAL
INTERNET FACSIMILE (FOR DP120F/125F)

GD-1040



Copyright 2001

TOSHIBA TEC CORPORATION

TABLE OF CONTENTS

Chapter 1. FEATURES AND SPECIFICATIONS

1.	Summary	1-1
2.	Features	1-1
3.	I-Fax Disposition	1-3
3.1	POP and SMTP	1-3
3.2	Precaution for Internet Transmission	1-4
3.3	Confirmed E-mail Server	1-4
4.	Internet Transmission Overview	1-5
4.1	Internet Fax to Internet Fax	1-5
4.2	Internet Fax to/from Client Computers	1-5
4.3	Onramp Gateway Transmission	1-6
4.4	Offramp Gateway Transmission	1-6
5.	Facsimile Unit Description	1-7
5.1	Rear View	1-7
5.2	Operation Panel	1-8
6.	Specifications	1-9
6.1	Transport Protocol	1-9
6.2	Phonebook	1-9
6.3	Data Format	1-9
7.	Limitations	1-11

Chapter 2. INSTALLATION

1.	I-FAX Kit Installation	2-1
1.1	Before Installing the Internet Fax Kit	2-1
1.2	Installing the Internet Fax Kit	2-1

Chapter 3. FUNCTION SETTINGS

1.	TCP/IP Configuration Setup	3-2
1.1	BootP/DHCP	3-3
1.2	IP Address	3-3
1.3	Subnetmask	3-4
1.4	Default Gateway	3-4
1.5	Host Name	3-5
2.	E-mail Account Setup	3-6
2.1	E-mail Address	3-6
2.2	Error E-mail Forward Address	3-7
2.3	Receive Mode	3-7
2.4	POP Server Address	3-8
2.5	POP Time	3-8
2.6	POP Login Name	3-9
2.7	POP Password	3-9
2.8	SMTP Server Address	3-10
3.	E-mail Properties Setup	3-11
3.1	Print Text Body	3-13
3.2	Body Page Limit	3-13
3.3	Send Disposition	3-14
3.4	Print Header	3-14
3.5	Print E-mail Error	3-15
3.6	Print DSN	3-15
3.7	Print Disposition	3-16
3.8	Request DSN	3-17
3.9	E-mail to FAX Gateway	3-17
3.10	Gateway Print	3-18
3.11	Gateway Security	3-18
3.12	Confirmation Timer	3-19
3.13	Set Confirmation Time	3-20
3.14	MSG Size Limit	3-20
4.	Onramp Gateway Setup	3-22

4.1	How the Onramp Gateway transmission works	3-22
4.2	How to setup for the Onramp Gateway	3-22
5.	Offramp Gateway Setup	3-23
5.1	How the Offramp Gateway transmission works	3-23
5.2	How to send a document using Offramp Gateway	3-24
5.3	How to setup for the Offramp Gateway	3-25
6.	Additional Functions	3-26
6.1	FTP Server Login Name	3-26
6.2	FTP Server Login Password	3-27
6.3	LAN FAX	3-27
6.4	IPX/SPX Protocol	3-28
6.5	Frame Type	3-28

Chapter 4. MAIL SERVER SETUP

1.	Lotus Domino	4-1
1.1	Installing Domino Server	4-1
1.2	Configuring Domino Server	4-3
1.3	Creating Notes User	4-8
1.4	Memorandum on Domino Environment	4-9
2.	Sendmail and Qpopper	4-10
2.1	Configuring Sendmail	4-10
2.2	Configuring Qpopper	4-13
3.	Qmail	4-15
3.1	Configuring Qmail	4-15
4.	Microsoft Exchange Server	4-19
4.1	Configuring DNS Server	4-19
4.2	Configuring Microsoft Exchange Server	4-20
5.	About Client MUA	4-22

Chapter 5. TROUBLESHOOTING

1.	Error Message	5-1
1.1	Input/Output Image Error	5-1
1.2	I-FAX Receive Error	5-1
1.3	I-FAX Send Error	5-2
1.4	Output Trap Error	5-2
1.5	Analyzing MIB Error	5-2
1.6	Operation Error	5-3
1.7	E-mail Check Error	5-4
1.8	Battery Error	5-4
1.9	Others	5-4
1.10	Test ErrorChap	5-5
2.	Error Codes Printed on Reports	5-6
2.1	Error Codes for Receiving I-Fax	5-6
2.2	Error Codes for Transmitting I-Fax	5-7

Chapter 6. UPDATING THE FIRMWARE

1.	Updating the Firmware in I-FAX PC Board	6-1
1.1	Updating the Firmware using TOSHIBA Viewer	6-1
1.2	Updating the firmware by FTP Download	6-3
2.	Updating the Firmware in Network Interface Card	6-4
2.1	Updating the Firmware using FTP Download	6-4
2.2	UPdaitng the Firmware using Flash Update	6-5

Chapter 7. APPENDIX

1.	List and Report	7-1
1.1	E-mail Notification Reports Print Format	7-1
1.2	List and Report Print Format	7-5
2.	User Function Setting Initial Value List	7-19
2.1	TCP/IP Configuration	7-19
2.2	E-mail Account	7-19
2.3	E-mail Properties	7-19
2.4	Options	7-20

Chapter 1. FEATURES AND SPECIFICATIONS

1. Summary
2. Features
3. I-Fax Disposition
 - 3.1 POP and SMTP
 - 3.2 Precaution for Internet Transmission
 - 3.3 Confirmed E-mail Server
4. Internet Transmission Overview
 - 4.1 Internet Fax to Internet Fax
 - 4.2 Internet Fax to/from Client Computers
 - 4.3 Onramp Gateway Transmission
 - 4.4 Offramp Gateway Transmission
5. Facsimile Unit Description
 - 5.1 Rear View
 - 5.2 Operation Panel
6. Specifications
 - 6.1 Transport Protocol
 - 6.2 Phonebook
 - 6.3 Data Format
7. Limitations

Chapter 1 Features and Specifications

1. Summary

The Internet Fax enables your machine to transmit the document through the Internet or Intranet. This enables the machine to transmit the document as an E-mail between other Internet Fax machines and computers.

2. Features

The Internet Fax Unit has following features.

Sending a document as an E-mail through the Internet:

This machine can send a document as an E-mail through the Internet. The scanned image is transferred to the TIFF images and sent as attached file of an E-mail.

Automatic receiving and manual receiving of an E-mail:

This machine can automatically or manually check the email server to see whether an E-mail has been delivered. If an E-mail has been received, the machine will print out the E-mail.

73 one touch key to E-mail:

The remote party's E-mail address data can be registered to a one touch key. E-mail options can be registered for each address.

300 abbreviated dial numbers to E-mail:

E-mail addresses can be assigned to 300 abbreviated dial numbers in the range from No. 001 to 999.

Multi-address transmission function to E-mail:

Transmissions of the same document to multiple E-mail addresses (up to 373 addresses) are possible using one operation sequence, in which preset abbreviated dial numbers (300), and one touch dial keys (73) can be used. When the multi-key is specified, key pad dialing of up to 1000 digits, or 100 locations, is also possible.

Relay transmission to E-mail (Onramp Gateway Transmission):

The DP120F/DP125F can serve as a relay station in relay transmission transactions to E-mail address end stations.

Offramp Gateway Transmission:

The DP120F/DP125F can be used as a Hub Station to forward E-mails from your client computer or Internet Fax machine to the any facsimiles through the public switched telephone network.

Error E-mail Transmission:

The E-mail that cannot be printed by the machine can be forwarded to another E-mail address.

Supporting DSN (Delivery Status Notification):

Transmission result is retrieved from received DSN message and stored into Activity Report as a transmission report. This machine automatically print the DSN message.

Supporting MDN (Message Disposition Notification):

An MDN request is added in the mail header of E-mails. If the machine receives the image data which exceeds the capability of this machine, the machine responds with a failure in the MDN message back to the original sender.

Additional Functions:

Enables to configure the FTP (File Transfer Protocol) login name and the password for the LAN-FAX utility, and frame type for the Novell communication, etc.

3 Internet Fax Disposition

Before connecting the network, read this section to understand the Internet Fax functions.

3.1 POP and SMTP

The available functions depend on whether this machine is set up to use the POP or SMTP for retrieving E-mail from a mail server.

POP (Post Office Protocol) and SMTP (Simple Mail Transfer Protocol):

“SMTP” is a server protocol for sending E-mail messages between servers. Usually the E-mail systems that transfer E-mails over the Internet use SMTP to send messages from one server to another. Then the E-mail message can be retrieved with an E-mail client using either “POP” or “IMAP”. “POP” is a protocol used to retrieve E-mail from a mail server.

When this machine use POP for the Receive Mode:

This machine works as a POP client (MUA). Similar to most e-mail applications, this machine use POP for receiving an E-mail message and SMTP for sending an E-mail message.

When this machine use SMTP for the Receive Mode:

This machine works as one of the mail servers (MTA). The machine can transfer an E-mail message in the SMTP transmission.

The following table shows the available functions according to the type of the protocols set for the Receive Mode.

Functions	Receive Mode	
	POP	SMTP
Send a document as an E-mail	Yes	Yes
Automatic receiving of an E-mail	Yes	Yes
Manual receiving of an E-mail	Yes	No
One Touch Keys to E-mail	Yes	Yes
Abbreviated Dial Numbers to E-mail	Yes	Yes
Multi-address transmission to E-mail	Yes	Yes
Relay Transmission to E-mail (Onramp Gateway)	Yes	Yes
Offramp Gateway	No	Yes
Error E-mail Transmission	Yes	Yes

If the use of the Offramp Gateway function is not necessary, it is recommended that the Receive Mode is set to “POP” because some settings will be required to be set on the mail server if the Receive Mode is set to “SMTP”. For more information about the Offramp Gateway function, see “Chapter 3 FUNCTION SETTINGS - Offramp Gateway Setup”.

3.2 Precaution for Internet Transmission

Transmission using the Internet Fax function are the same as E-mail transmissions. Before you start to use the Internet Fax function, it is recommended that you read this section and understand the precautions for Internet Transmission.

- The Internet Fax sends a document to the email server of Internet and it does not send via the PSTN alike regular facsimile transmissions.
- An error mail is sent back from the mail server when the E-mail document fails to be forwarded to the recipient.
- An error mail sometimes is not sent back even if the E-mail has failed. It is highly recommended to confirm that the document has been received by the recipient.
- The Internet transmission has low security. It is recommended that you use regular facsimile transmission when a confidential document is sent.
- It may take a considerable amount of time for the recipient to receive the document because of the line traffic in the Internet.
- If the document being transmitted has a large amount of data it may not be successfully sent due to the configuration of the E-mail server.

3.3 Confirmed E-mail Server

The following table shows the list of E-mail servers supported with the Internet Fax kit.

	Server Name	Version
1	Sendmail	8.9.1
	Qpopper	3.0.2
2	Sendmail	8.9.3
	Qpopper	3.0.2
3	Microsoft Exchange	5.5
4	Qmail	1.03
5	LotusDomino	5.0.1a _(Intl)

NOTE:

The mail server listed above may, or may not be used depending on your environment.

4. Internet Fax Transmission Overview

The following is an overview of the various transmissions that can be performed using the Internet Fax function.

4.1 Internet Fax to Internet Fax

The machine can send a document to another Internet Fax machine through the Internet or Intranet. The document is sent as an E-mail to the Internet Fax machine.

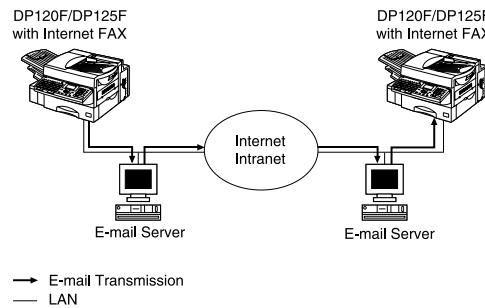


Fig. 4-1-1

4.2 Internet Fax to/from Client Computers

The machine can send a document to the client computers through the Internet or Intranet. The client computers can send the E-mail to the machine as well.

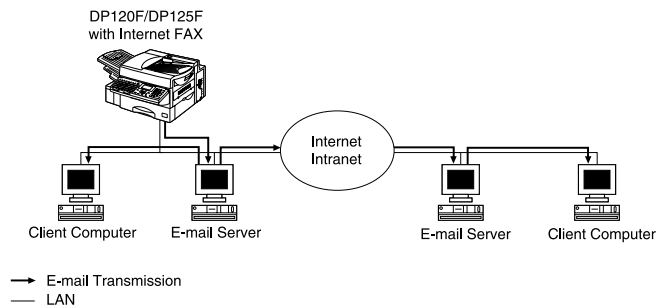


Fig. 4-2-1

NOTE:

- The client computer receives TIFF-FX images when the machine sends a document using the Internet Fax function.
- The machine can only print out text files and the TIFF-FX images. When sending E-mail from the client computer to this machine using the E-mail application, files other than text or TIFF-FX images cannot be sent.

4.3 Onramp Gateway Transmission

Using the Internet Fax function, E-mail addresses can be assigned to the ITU-T Mailbox in this machine. Therefore, the ITU-T F-code compliant facsimiles can send the document to the ITU-T Mailbox in this machine and this machine forwards the received document to E-mail recipients assigned to the Mailbox using the relay function.

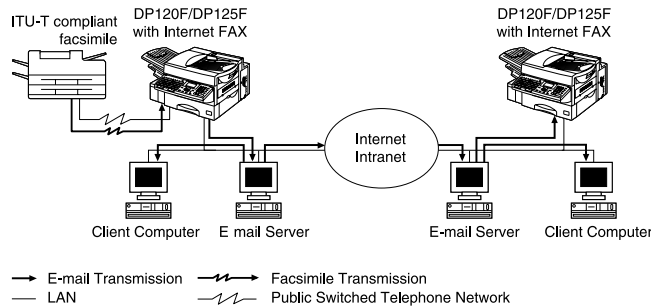


Fig. 4-3-1

NOTE:

- Documents sent as an Internet Fax will be received as a TIFF-FX image on the client computer.

For further details about the Onramp Gateway, see “Setup Flow - Onramp Gateway Setup”.

4.4 Offramp Gateway Transmission

The machine can forward received E-mail documents to any facsimile through the public telephone line using Offramp Gateway transmission. If another Internet Fax machine or client computer sends a document to the Internet Fax machine through the Internet or Intranet, then the Internet Fax machine can forward the document to another facsimile through the PSTN.

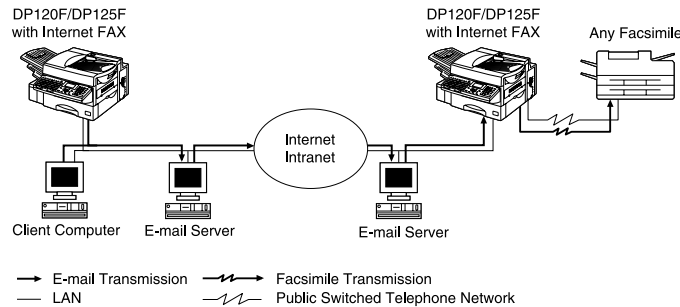


Fig. 4-4-1

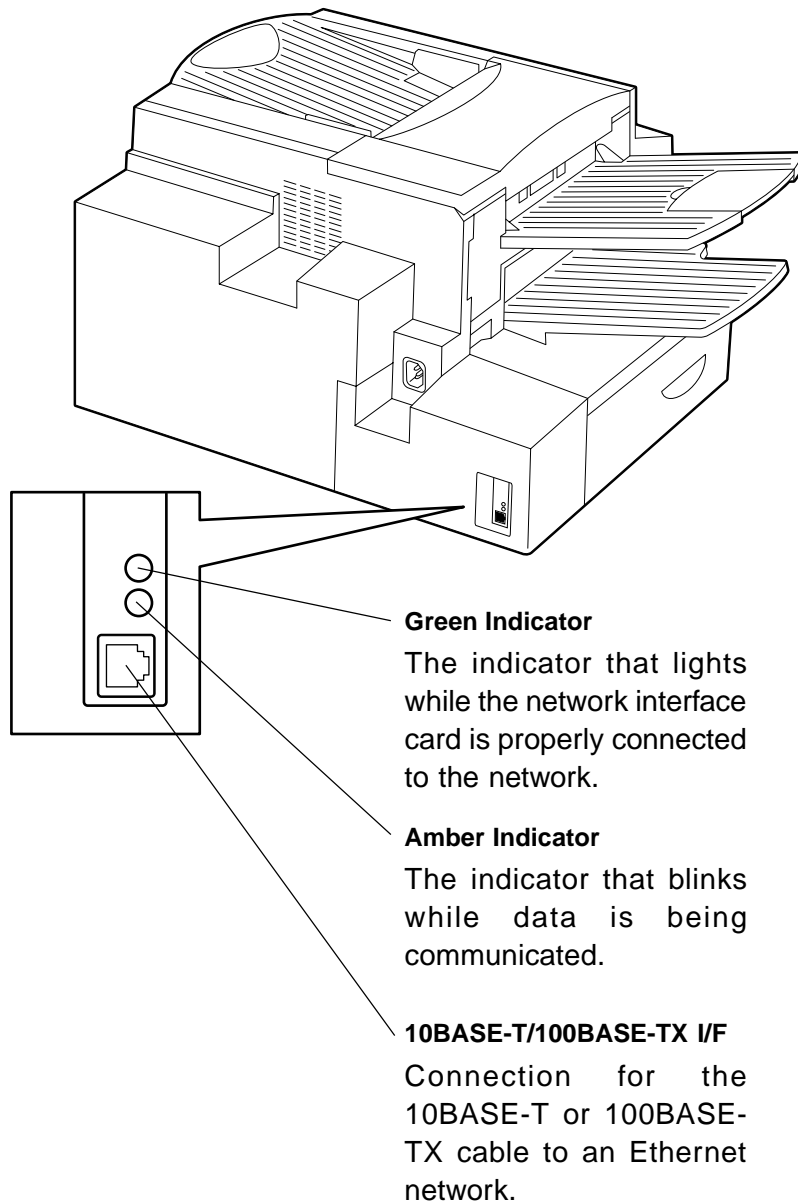
NOTE:

- To operate in this transmission, the machine must be set up to enable SMTP transmission. It is also required to configure the some settings on the mail server on your network.
- Documents sent as an Internet Fax will be received as a TIFF-FX image on the client computer.

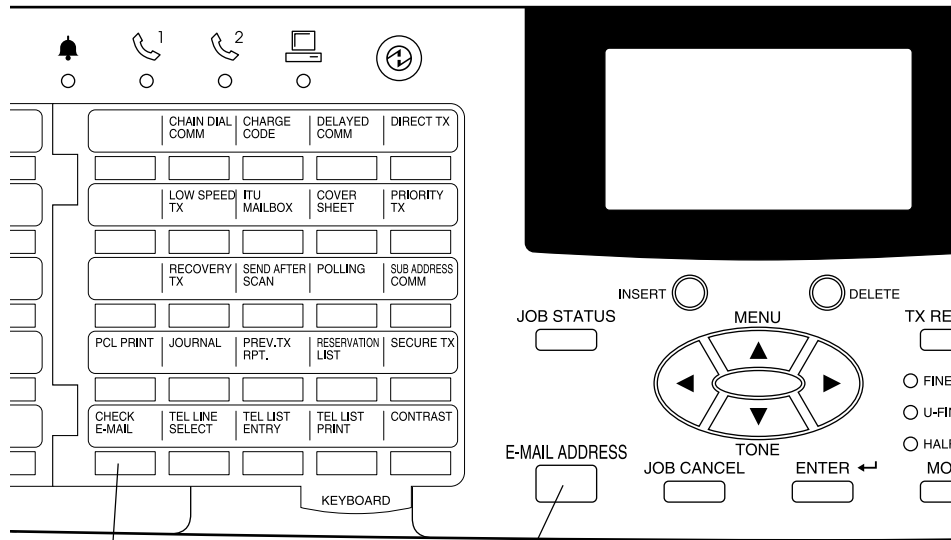
For further details about the Onramp Gateway, see “ Setup Flow - Offramp Gateway Setup”.

5. Facsimile Unit Description

5.1 Rear View



5.2 Operation Panel



CHECK E-MAIL

Used to receive an E-mail immediately.

E-MAIL ADDRESS Key

Used to program E-mail addresses when programming One Touch Key or Abbreviated Numbers. By pressing this key prior to a transmission, an E-mail address can be entered for an Internet Fax transmission.

6. Specifications

6.1 Transport Protocol

Outgoing I-FAX message: ESMTTP, SMTP

Incoming I-FAX message: POP3, ESMTTP, SMTP

- NOTES:**
- If the Receive Mode is set to "SMTP", the machine use the ESMTTP for forwarding and receiving I-FAX messages. If the forward MTA does not support the ESMTTP, this machine changes the protocol to the SMTP.
 - If the Request DSN is set to OFF, this machine use the SMTP to forward the I-FAX message.

6.2 Phonebook

6.2.1 Local Phonebook

A Local Phonebook is one of the E-mail address books which lists all the E-mail addresses of the receivers entered in One Touch Dial and Abbreviated Dial.

6.2.2 History Address Book

Sending and Receiving History Address Books are the part of the E-mail address book.

Sending History Address Book: latest 50 maximum E-mail address stored

Receiving History Address Book: latest 50 maximum E-mail address stored

6.3 Data Format

6.3.1 MIME Content-type

Text: ALL (plain richtext, html, etc.)

Multipart: mixed, report, alternative

Message: Delivery-status, rfc822, disposition-notification

Image: Tiff-FX

6.3.2 I-FAX Document Resolution

The result resolutions vary according to the combination of default settings for the resolution in the Scan Mode and resolution set for the receiver capability.

Scan Mode	Receiver Capability	Result Scanning	Result
Standard	200 x 100 dpi	200 x 100 dpi	200 x 100 dpi
	200 x 200 dpi	200 x 100 dpi	200 x 100 dpi
	200 x 400 dpi	200 x 100 dpi	200 x 100 dpi
	400 x 400 dpi	200 x 100 dpi	200 x 100 dpi
Fine	200 x 100 dpi	200 x 200 dpi	200 x 100 dpi
	200 x 200 dpi	200 x 200 dpi	200 x 200 dpi
	200 x 400 dpi	200 x 200 dpi	200 x 200 dpi
	400 x 400 dpi	200 x 200 dpi	200 x 200 dpi
U-Fine	200 x 100 dpi	400 x 400 dpi	200 x 100 dpi
	200 x 200 dpi	400 x 400 dpi	200 x 200 dpi
	200 x 400 dpi	400 x 400 dpi	200 x 400 dpi
	400 x 400 dpi	400 x 400 dpi	400 x 400 dpi

NOTE:

When the Receiver Capability is skipped to be selected, the machine use "200 x 200 dpi" for the receiver capability resolution.

7. Limitations

The limitations for operating the Internet Fax functions are described below.

- a. The machine can print the files of text format or TIFF-FX format. Therefore, Any E-mail sent to the Internet Fax should contain only the body text in text format and attached files in TIFF-FX format. Also, when the body text fo an E-mail is sent to the Internet Fax in html format, the Internet Fax prints out the html source of the html message.
- b. The machine can print only the TIFF-FX images whose resolution is either 200x100, 200x200, 200x400, or 400x400.
- c. The parallel interface of the machine is disabled when the optional Internet Fax unit is installed to the machine.
- d. The Offramp Gateway transmission to the international call cannot be performed.
- e. The Offramp Gateway transmission to the multiple destinations cannot be performed. If the machine receives the Offramp Gateway E-mail to several destinations, this machine forwards the facsimile to only the first fax number.
- f. If the mail server does not support the ESMTP, the DSN request has been denied.
- g. This machine can be used as a mail server to enable the Offramp Gateway transmission. However, this machine does not support a full MTA service.

Chapter 2. INSTALLATION

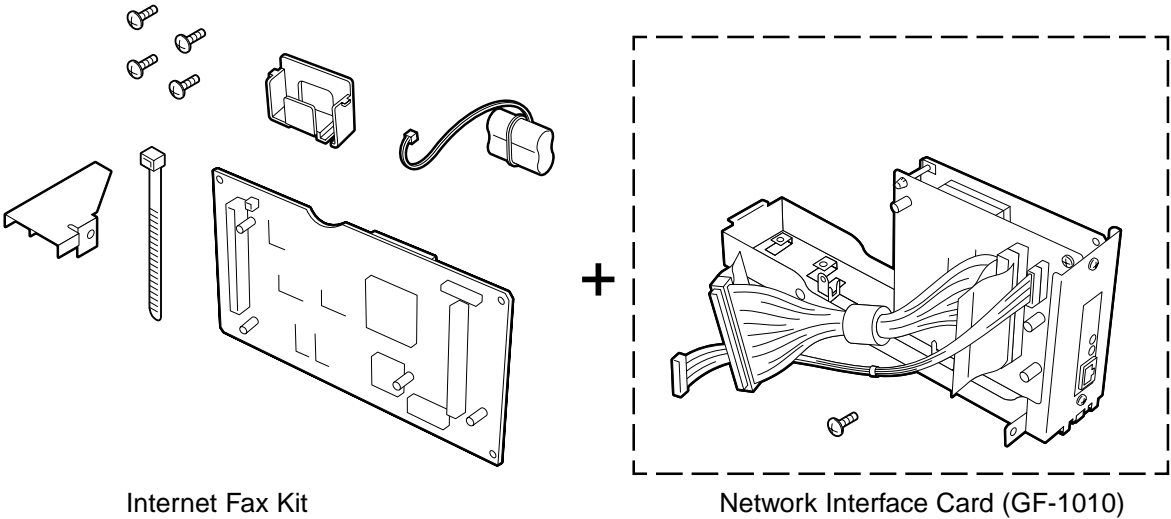
- 1. I-FAX Kit Installation
 - 1.1 Before Installing the Internet Fax Kit
 - 1.2 Installing the Internet Fax Kit

Chapter 2 Installation

1. I-FAX Kit Installation

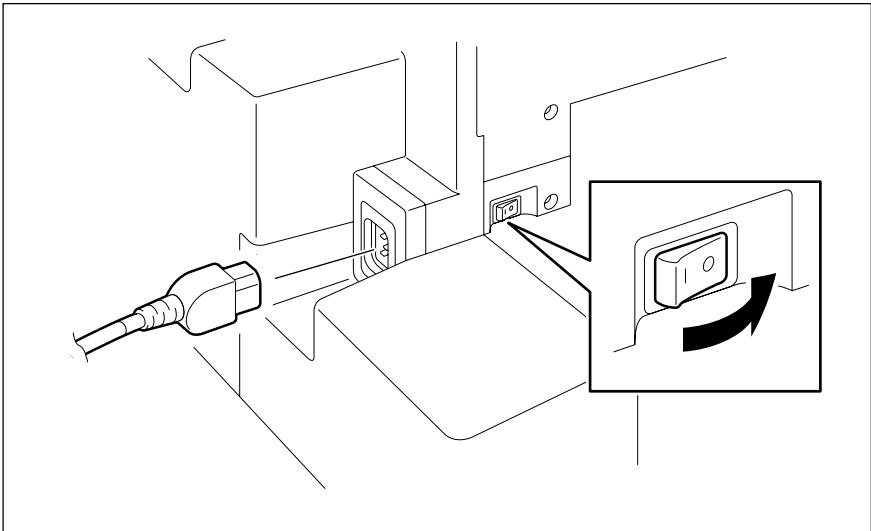
1.1 Before Installing the Internet Fax Kit

The following figures show the contents for Internet Fax kit. You also need the Network Interface Card (GF-1010) to install the Internet Fax kit to your DP120F/DP125F.

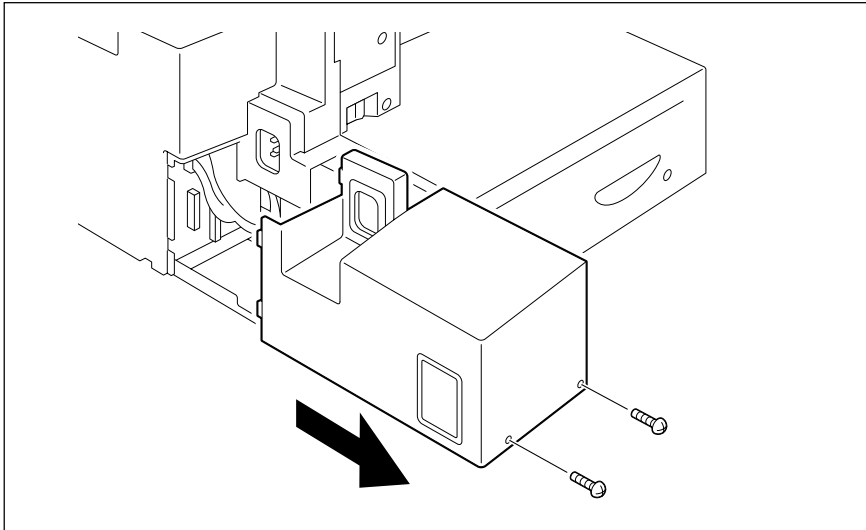


1.2 Installing the Internet Fax Kit

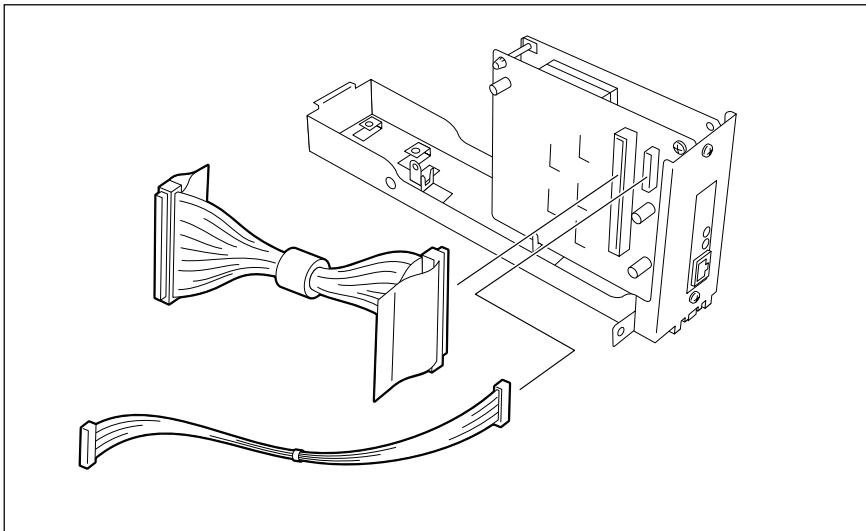
(1)



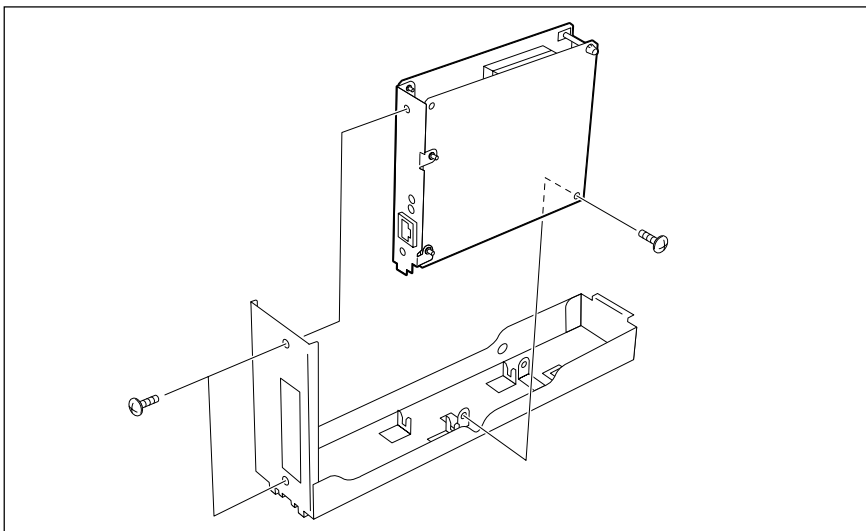
(2)



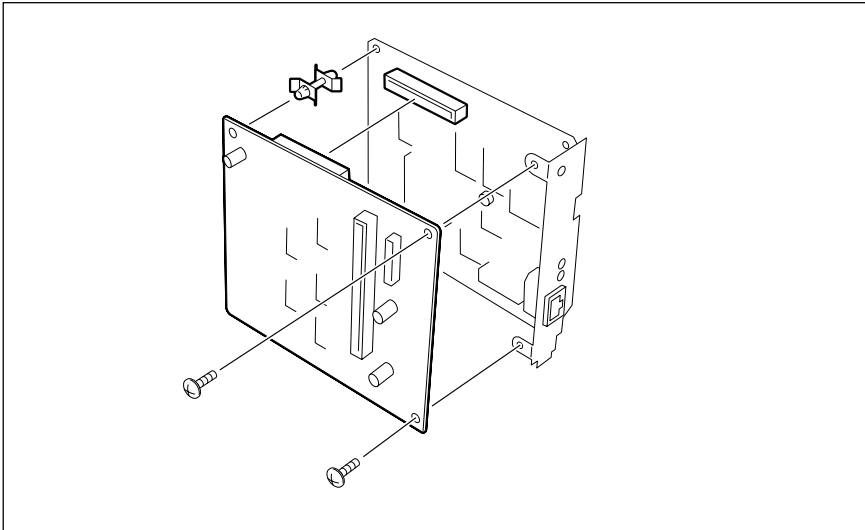
(3)



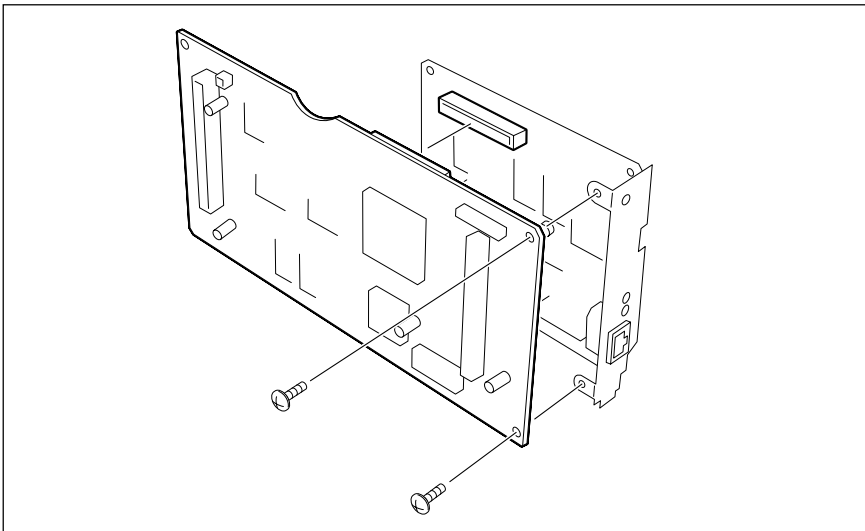
(4)



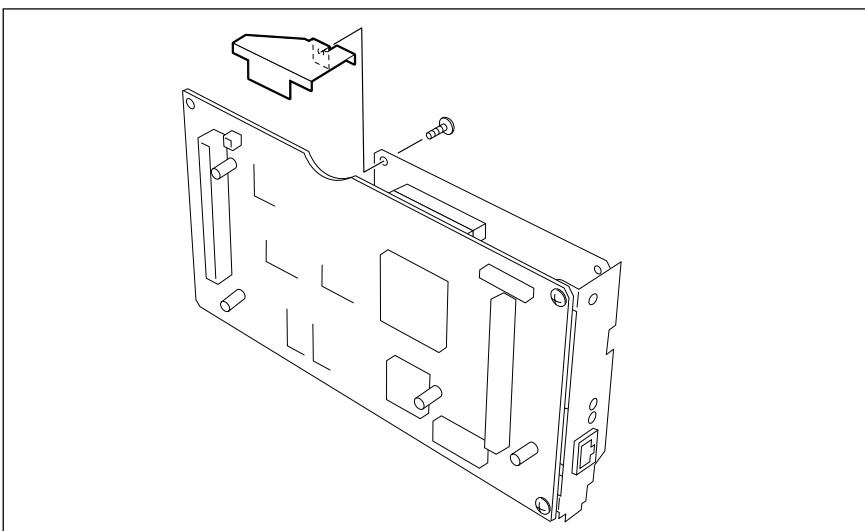
(5)



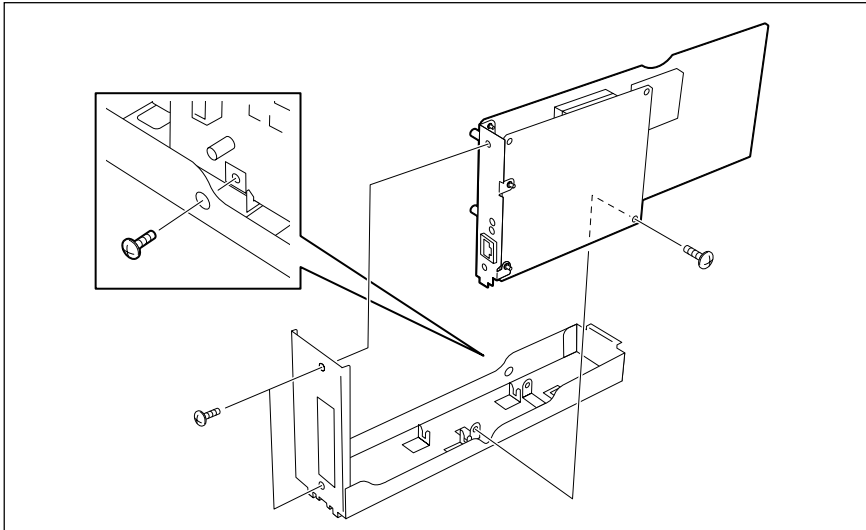
(6)



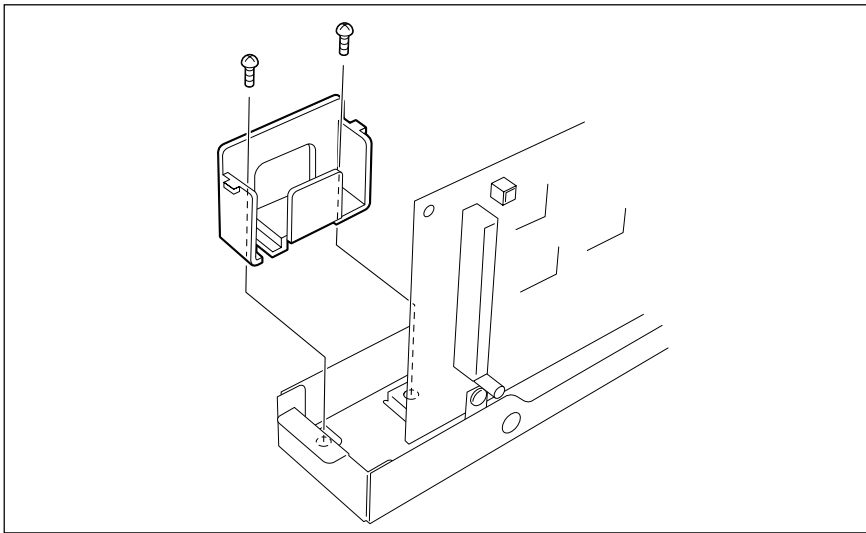
(7)



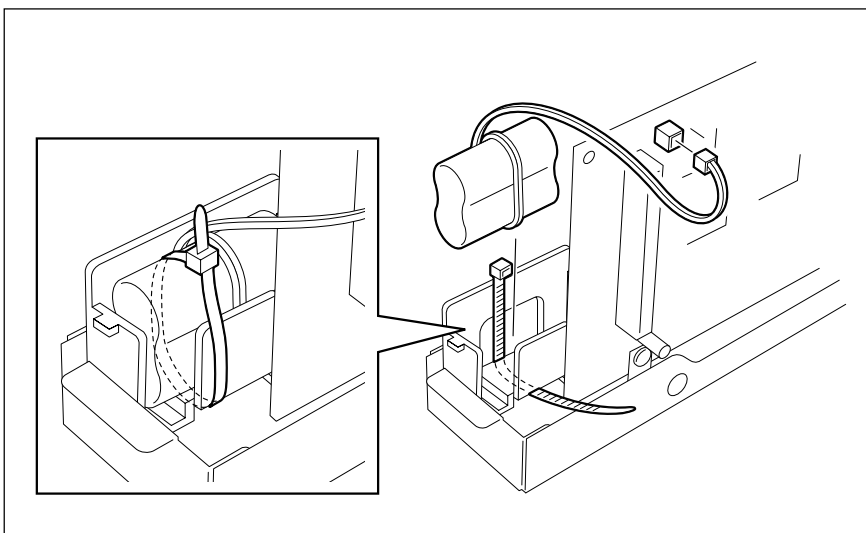
(8)



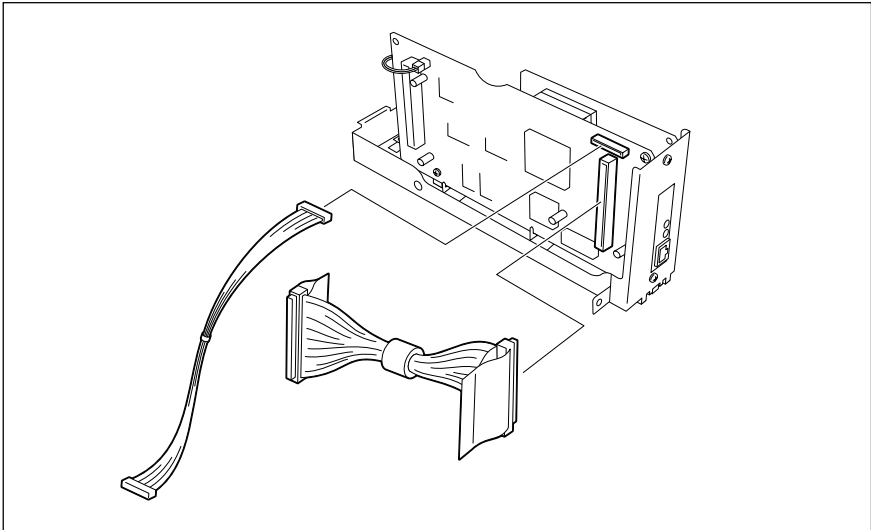
(9)



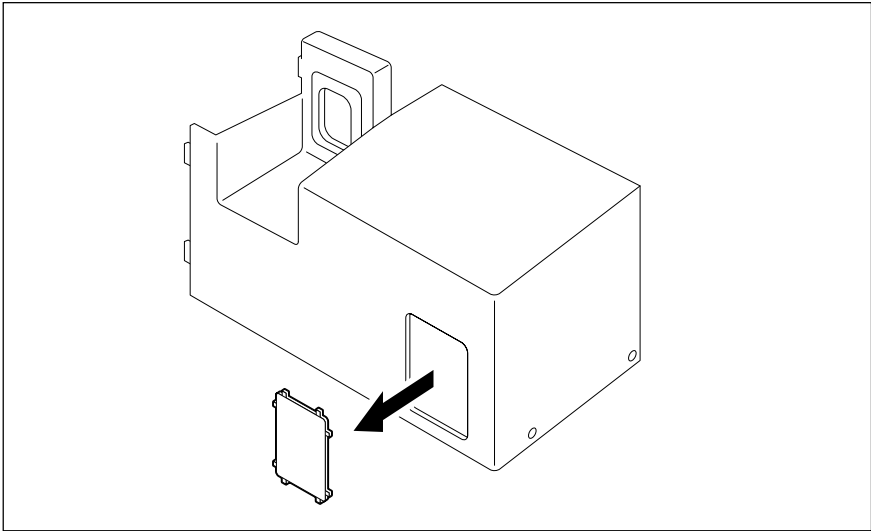
(10)



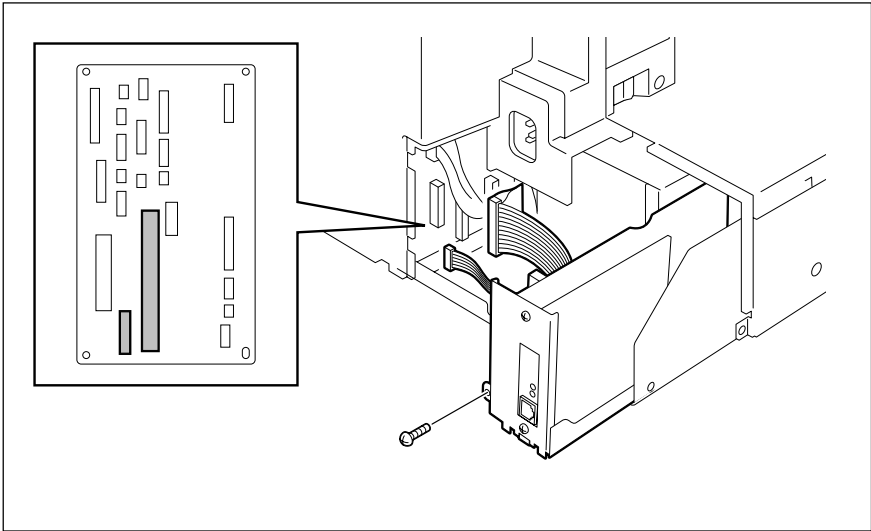
(11)



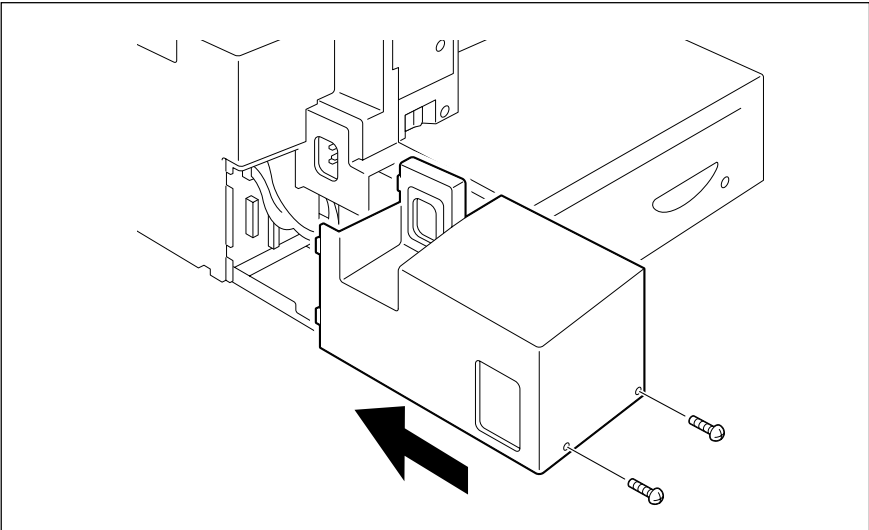
(12)



(13)



(14)



Chapter 3. FUNCTION SETTINGS

- 1. TCP/IP Configuration Setup
 - 1.1 BootP/DHCP
 - 1.2 IP Address
 - 1.3 Subnetmask
 - 1.4 Default Gateway
 - 1.5 Host Name
- 2. E-mail Account Setup
 - 2.1 E-mail Address
 - 2.2 Error E-mail Forward Address
 - 2.3 Receive Mode
 - 2.4 POP Server Address
 - 2.5 POP Time
 - 2.6 POP Login Name
 - 2.7 POP Password
 - 2.8 SMTP Server Address
- 3. E-mail Properties Setup
 - 3.1 Print Text Body
 - 3.2 Body Page Limit
 - 3.3 Send Disposition
 - 3.4 Print Header
 - 3.5 Print E-mail Error
 - 3.6 Print DSN
 - 3.7 Print Disposition
 - 3.8 Request DSN
 - 3.9 E-mail to FAX Gateway
 - 3.10 Gateway Print
 - 3.11 Gateway Security
 - 3.12 Confirmation Timer
 - 3.13 Set Confirmation Time
 - 3.14 MSG Size Limit
- 4. Onramp Gateway Setup
 - 4.1 How the Onramp Gateway transmission works
 - 4.2 How to setup for the Onramp Gateway
- 5. Offramp Gateway Setup
 - 5.1 How the Offramp Gateway transmission works
 - 5.2 How to send a document using Offramp Gateway
 - 5.3 How to setup for the Offramp Gateway
- 6. Additional Functions
 - 6.1 FTP Server Login Name
 - 6.2 FTP Server Login Password
 - 6.3 LAN FAX
 - 6.4 IPX/SPX Protocol
 - 6.5 Frame Type

Chapter 3 Function Settings

The Function Settings are used to set various requirements for the user. The function setting is done by either a menu-selection method or by setting the numeric value. It is possible to select any function by pressing the [MENU] key, then the [↑] and [↓] keys, then [ENTER], or the numeric key for that function. For the initial value list, refer to “Chapter 12 APPENDIX”.

- <Remarks> To select a menu item, you may use the [↑] and [↓] keys to highlight the required item followed by pressing the [ENTER] key, as described above, or you may directly enter the item number through the numeric key.
- <Remarks> If the first item is highlighted, the [↑] key will not have any effect. If the last item is highlighted, the [↓] key will not return to the first item.
- <Remarks> The keystrokes needed to access the various function settings will be shown with uppercase letters and brackets. For example, [MENU] or [ENTER] means to press the Menu Key or the Enter Key.

1 TCP/IP Configuration Setup

This section describes the procedures to configure the TCP/IP for the Network Interface Card to connect to the Internet.

The items and the parameter values for the TCP/IP Configuration Setup differs whether the IP address of this machine is obtained from a DHCP server or assigned manually.

Setup Item	Use DHCP Server	Assign IP Address
BootP/DHCP	Set to ON	Set to OFF
IP Address	Not required	Required
Subnetmask	Not required	Required if necessary
Default Gateway	Not required	Required if necessary
Host Name	Required	Required

- **BootP/DHCP**
Set to enable or disable the BootP/DHCP whether obtaining the IP address from the DHCP server. When the TCP/IP settings of this machine are provided by the DHCP server, set this to ON. Set this to OFF when you want to assign the TCP/IP settings manually.
- **IP Address**
Assign the IP address of this machine. Do not set this when the IP address is obtained from the DHCP server. The machine uses the IP address here even if the BootP/DHCP is set to be enabled.
- **Subnetmask**
Assign the Subnetmask if required.
- **Default Gateway**
Assign the Default Gateway address when the machine is used in the network through a router.
- **Host Name**
Set the name of this machine. This name is used as the sender name for E-mails.

NOTE:

- Please ask network administrator for the values of the TCP/IP settings.
- If the optional PCL Print Kit is installed on your machine, you can also use the MAP program to setup the TCP/IP configuration. Refer to the service manual for PCL Print Kit for the information of the TCP/IP Setup using the MAP.

1.1 BootP/DHCP [MENU], [3], [5], [0], [1], [0], [2]

This settings is used to enable the BootP/DHCP to obtain the IP address, Subnetmask, and Default Gateway address from the DHCP server, when the TCP/IP settings of this machine are provided by the DHCP server. Set this to disable the BootP/DHCP when you want to assign the TCP/IP settings manually.

- (1) Use the [↑] or [↓] keys to select the desired option (ON or OFF), then press the [ENTER] key.

BOOTP/DHCP 1.ON 2.OFF

ON

Selected to enable the BootP/DHCP function.

OFF

Selected to disable the BootP/DHCP function.

- (2) After the "OPERATION COMPLETED" message is displayed, the display return to the TCP/IP menu.
- (3) Continue to set another item, or press [0] + [1] to select "1.DONE" to exit the menu operation mode and return to the Standby Mode. The Network Interface Card starts initializing. Wait for few minutes until the Network Interface Card completes initializing.

1.2 IP Address [MENU], [3], [5], [0], [1], [0], [3]

This setting is used to assign the IP address of this machine. Do not set this when the IP address is obtained from the DHCP server. The machine uses the IP address here even if the BootP/DHCP is set to be enabled.

- (1) Enter the IP address, then press the [ENTER] key.

IP ADDRESS 000.000.000.000

IP ADDRESS

Enter the IP address of this machine. "000.000.000.000" cannot be assigned for the IP address.

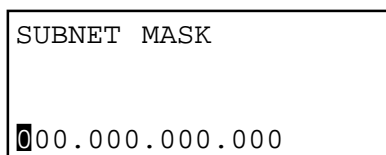
- (2) After the "OPERATION COMPLETED" message is displayed, the display return to the TCP/IP menu.

- (3) Continue to set another item, or press [0] + [1] to select "1.DONE" to exit the menu operation mode and return to the Standby Mode. The Network Interface Card starts initializing. Wait for few minutes until the Network Interface Card completes initializing.

1.3 Subnetmask [MENU], [3], [5], [0], [1], [0], [4]

This setting is used to assign the Subnetmask if required.

- (1) Enter the Subnetmask, then press the [ENTER] key.



A screenshot of a menu titled "SUBNET MASK". Below the title, the default value "000.000.000.000" is displayed. The text is in a monospaced font and is enclosed in a rectangular border.

SUBNET MASK

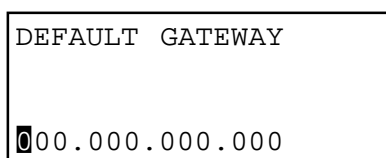
Enter the subnet mask to determine what subnet an IP address belongs to if required. "000.000.000.000" and "255.255.255.255" cannot be assigned for the Subnetmask.

- (2) After the "OPERATION COMPLETED" message is displayed, the display return to the TCP/IP menu.
- (3) Continue to set another item, or press [0] + [1] to select "1.DONE" to exit the menu operation mode and return to the Standby Mode. The Network Interface Card starts initializing. Wait for few minutes until the Network Interface Card completes initializing.

1.4 Default Gateway [MENU], [3], [5], [0], [1], [0], [5]

This setting is used to assign the Default Gateway address when the machine is used in the network through a router.

- (1) Enter the Default Gateway address, then press the [ENTER] key.



A screenshot of a menu titled "DEFAULT GATEWAY". Below the title, the default value "000.000.000.000" is displayed. The text is in a monospaced font and is enclosed in a rectangular border.

DEFAULT GATEWAY

Enter the address of a router on the network if the machine is used in the network through a router.

- (2) After the "OPERATION COMPLETED" message is displayed, the display return to the TCP/IP menu.
- (3) Continue to set another item, or press [0] + [1] to select "1.DONE" to exit the menu operation mode and return to the Standby Mode. The Network Interface Card starts initializing. Wait for few minutes until the Network Interface Card completes initializing.

1.5 Host Name [MENU], [3], [5], [0], [1], [0], [6]

This setting is used to set the name of this machine. This name is used as the sender name for E-mails.

- (1) Enter the Host Name, then press the [ENTER] key.

HOST NAME
(MAX 254:)
█

HOST NAME

Enter the name to identify this machine.

- (2) After the "OPERATION COMPLETED" message is displayed, the display return to the TCP/IP menu.
- (3) Continue to set another item, or press [0] + [1] to select "1.DONE" to exit the menu operation mode and return to the Standby Mode. The Network Interface Card starts initializing. Wait for few minutes until the Network Interface Card completes initializing.

2. E-mail Account Setup

This section describes the procedures to set the E-mail account information on the machine so that you can send and receive E-mails with this machine.

NOTE:

Before you set up the E-mail account information, your E-mail account must be created on the E-mail server.

The items and the parameter values for the E-mail Account Setup differs whether the machine use POP or SMTP for the Receive Mode. Available functions vary according to the type of the Receive Mode.

If you do not prefer to use the Offramp Gateway function, it is recommended that the Receive Mode is set to "POP" because some settings will be required on the mail server if the Receive Mode is set to "SMTP".

Setup Item	When set to POP for Receive Mode	When set to SMTP for Receive Mode
E-mail Address	Required	Required
Error E-mail Forward Address	Required	Required
Receive Mode	Set to "POP"	Set to "SMTP"
POP Server Address	Required	Not required
POP Time	Required	Not required
POP Login Name	Required	Not required
POP Password	Required	Not required
SMTP Server Address	Required	Required

NOTE:

- When the IP address is obtained from the DHCP server, the Receive Mode cannot be set to SMTP.
- In order to use the Offramp Gateway function, it is required to setup the E-mail properties. For more information about the Offramp Gateway function, see "Offramp Gateway Setup".

2.1 E-mail Address [MENU], [3], [5], [0], [2], [0], [1]

This sets the E-mail address of the machine.

NOTE:

When the Receive Mode is set to SMTP, the domain of the E-mail address becomes a name added the sub-address for this machine and domain name of the SMTP server. You can use any username for the E-mail address.

For example, if the domain name of the mail server is "toshiba.com" and host name of this machine is "au1", the domain of the E-mail address for this machine will be a FQDN that the host name is added to this domain. [username@au1.toshiba.com]

- (1) Enter the E-mail address, then press the [ENTER] key.

E-MAIL ADDRESS (MAX 254 :) █

E-MAIL ADDRESS

Enter the E-mail address for this machine that provided by the administrator of the mail server.

- (2) When the "E-MAIL" menu is displayed, press the [STOP] key to return to the Standby Mode screen.

2.2 Error E-mail Forward Address [MENU], [3], [5], [0], [2], [0], [2]

This sets the E-mail address to forward the received E-mail when an error occurs and the machine cannot print the E-mail.

NOTE:

The machine recognizes an error if the E-mail contains files of other than text format or TIFF-FX format. The machine can forward this E-mail to another E-mail address when this happens. It is recommended to set the address to forward the E-mail to a personal computer because the personal computer may normally view the files.

- (1) Enter the E-mail address, then press the [ENTER] key.

ERR EMAIL FW ADDRESS (MAX 254 :) █

ERR EMAIL FW ADDRESS

Enter the E-mail address to forward the E-mail when an error occurs.

- (2) When the "E-MAIL" menu is displayed, press the [STOP] key to return to the Standby Mode screen.

2.3 Receive Mode [MENU], [3], [5], [0], [2], [0], [3]

This sets the type of protocols used for receiving E-mail. The available functions vary according to that this is set to "POP" or "SMTP".

NOTE:

To perform the Offramp Gateway transmission, the Receive Mode must set to "SMTP".

- (1) Enter the E-mail address, then press the [ENTER] key.

RECEIVE MODE 1 . POP 2 . SMTP

POP

Selected to use the POP for receiving E-mails from the mail server.

SMTP

Selected to use the SMTP for receiving E-mails from the mail server.

- (2) After the "OPERATION COMPLETED" message is displayed, press the [STOP] key to return to the Standby Mode screen.

2.4 POP Server Address [MENU], [3], [5], [0], [2], [0], [4]

This sets the IP address of the POP server. This must be set when "POP" is selected in "Receive Mode."

- (1) Enter the IP address of the POP server, then press the [ENTER] key.

POP SERVER ADDRESS 000.000.000.000

POP SERVER ADDRESS

Enter the IP address of the POP server.

- (2) After the "OPERATION COMPLETED" message is displayed, press the [STOP] key to return to the Standby Mode screen.

2.5 POP Time [MENU], [3], [5], [0], [2], [0], [5]

This sets the time interval to check whether or not new E-mail has been received at the POP server. This setting is valid when "POP" is selected in "Receive Mode."

- (1) Use the [↑] or [↓] keys to select the desired option, then press the [ENTER] key.

POP TIME 01 . 1MIN 02 . 2MINS 03 . 5MINS	04 . 10MINS 05 . 30MINS 06 . 1HR 07 . 2HRS	07 . 2HRS 08 . 6HRS 09 . 12HRS 10 . 24HRS
---	---	--

1MIN - 24HRS

Select the time interval from the time list to check for new E-mail at the POP server.

- (2) After the "OPERATION COMPLETED" message is displayed, press the [STOP] key to return to the Standby Mode screen.

2.6 POP Login Name [MENU], [3], [5], [0], [2], [0], [6]

This sets the user name to log in the POP server. This must be set when "POP" is selected in "Receive Mode."

NOTE:

The user name to log in the POP server is provided by the administrator of the E-mail server. Ask your administrator for the user name if you do not know it.

- (1) Enter the POP login name, then press the [ENTER] key.

POP LOGIN NAME (MAX 32:) public

POP LOGIN NAME

Enter the user name to login to the POP server. "public" has been set as a default POP login name.

- (2) When the "E-MAIL" menu is displayed, press the [STOP] key to return to the Standby Mode screen.

2.7 POP Password [MENU], [3], [5], [0], [2], [0], [7]

This sets the password to log in the POP server. This must be set when "POP" is selected in "Receive Mode."

NOTE:

The password to log in the POP server is provided by the administrator of the E-mail server. Ask your administrator for the password if you do not know it.

- (1) Enter the POP password, then press the [ENTER] key.

POP PASSWORD (MAX 32:) pass

POP PASSWORD

Enter the password to login to the POP server. "pass" has been set as a default POP login password.

- (2) When the "E-MAIL" menu is displayed, press the [STOP] key to return to the Standby Mode screen.

2.8 SMTP Server Address [MENU], [3], [5], [0], [2], [0], [8]

This sets the IP address of the SMTP server which used for an Outgoing E-mail server.

NOTE:

When "SMTP" is selected in "Receive Mode", the machine also retrieving E-mails from the SMTP server assigned here using the SMTP transmission. In this case, this machine works as one of the mail servers.

- (1) Enter the IP address of the SMTP server, then press the [ENTER] key.

SMTP SERVER ADDRESS
000.000.000.000

SMTP SERVER ADDRESS

Enter the IP address of the SMTP server.

- (2) After the "OPERATION COMPLETED" message is displayed, press the [STOP] key to return to the Standby Mode screen.

3. E-mail Properties Setup

This section describes the procedures to set the E-mail properties on how the machine activates the Internet Fax function.

The following table describes the E-mail properties that can be set up.

Properties Name	Description	Default
Print Text Body	This is to set On or Off for printing the body section of the received E-mail. However, when the received E-mail has only the body section, the body section is printed even if this is set to Off.	On
Body Page Limit	This is to set the maximum number of the pages to be printed when receiving an E-mail. If the number of the pages to be printed exceeds the limit, the machine interrupts the printing.	5
Send Disposition	This is to set On or Off for replying to the MDN request when receiving the documents from other machines using the Internet Fax function.	OFF
Print Header	This is to set On or Off for printing the header section of the received E-mail.	ON
Print E-mail Error	This is to set On or Off for printing only the items that can be printed normally when an error occurs. The items that machine recognizes to be erroneous are not printed.	ON
Print DSN	This is to set On or Off for printing the DSN.	OFF
Print Disposition	This is to set On or Off for printing the MDN replied from a recipient that informs you the message successfully received by a recipient.	ON
Request DSN	This is to set On or Off for sending the DSN request.	ON
Confirm. Timer	This is to set On or Off for printing the alert report if the machine does not receive the MDN reply from a recipient in the time interval set in "Set Confirm. Time."	ON
Set Confirm. Time	This is to set the time interval to wait for the MDN reply before printing the alert report.	15MINS
MSG Size Limit	This is to set the maximum size for sending documents using the Internet Fax function. If the size of documents exceeds the maximum size, the machine sends the documents separately.	2.0MBYTE

There are also the E-mail properties related to the Offramp Gateway function. When you set the Receive Mode to "SMTP", you can additionally configure the following items.

Properties Name	Description
E-mail to FAX Gateway	This sets the machine to allow forwarding the document that is received by the Offramp Gateway transmission.
Gateway Print	This sets whether to print the document sent from the Internet FAX machine using the Offramp Gateway transmission. The machine prints the document before forwarding it to the facsimile, so that you can confirm what is sending using the Offramp Gateway.
Gateway Security	This sets whether to check the fax number where the document is sent before allowing the Offramp Gateway. If the fax number of the facsimile is not registered as One Touch dials or Abbreviated dials, the machine does not allow the Offramp Gateway for this document.

For further details about the Offramp Gateway Transmission, see "Offramp Gateway Setup".

3.1 Print Text Body [MENU], [4], [6], [0], [1]

This sets whether or not the body section of the received E-mail is printed

NOTE:

When the Internet Fax function is used only between other DP120F/DP125Fs, it is recommended to select OFF.

- (1) Use the [↑] or [↓] keys to select the desired option (ON or OFF), then press the [ENTER] key.

PRINT TEXT BODY 1.ON 2.OFF

ON

Selected to print the text body of a received E-mail.

OFF

Selected not to print the text body of a received E-mail.

- (2) After the "OPERATION COMPLETED" message is displayed, press the [STOP] key to return to the Standby Mode screen.

3.2 Body Page Limit [MENU], [4], [6], [0], [2]

This sets the maximum number of the pages to be printed in the range from 1 to 99 when receiving an E-mail. If the number of the pages to be printed exceeds the limit, the machine interrupts the printing.

NOTE:

The received body text data may be garbled during transferred through the Internet. This is a known problem with E-mail transmissions over the Internet. It is recommended to select ON to avoid printing of a large amount of the garbled data.

- (1) Enter the number of the pages to be printed, then press the [ENTER] key.

BODY PAGE LIMIT 5

BODY PAGE LIMIT

Enter the number of the pages to be printed. "5" is set as a default body page limit.

- (2) After the "OPERATION COMPLETED" message is displayed, press the [STOP] key to return to the Standby Mode screen.

3.3 Send Disposition [MENU], [4], [6], [0], [3]

This sets the reply to the MDN request when receiving the documents from other DP120F/DP125F using the Internet Fax transmission.

MDN: Message Disposition Notification, is used to notify the sender of the disposition of a message after it has been successfully delivered to a recipient.

NOTE:

This function is only available when the remote unit and the your Incoming E-mail server support the MDN.

- (1) Use the [↑] or [↓] keys to select the desired option (ON or OFF), then press the [ENTER] key.

SEND DISPOSITION 1.ON 2.OFF

ON

Selected to enable replying the MDN request.

OFF

Selected to disable replying the MDN request.

- (2) After the "OPERATION COMPLETED" message is displayed, press the [STOP] key to return to the Standby Mode screen.

3.4 Print Header [MENU], [4], [6], [0], [4]

This sets whether or not the header section of the received E-mail is printed.

- (1) Use the [↑] or [↓] keys to select the desired option (ON or OFF), then press the [ENTER] key.

PRINT HEADER 1.ON 2.OFF

ON

Selected to print the header section of a received E-mail.

OFF

Selected not to print the header section of a received E-mail.

- (2) After the “OPERATION COMPLETED” message is displayed, press the [STOP] key to return to the Standby Mode screen.

3.5 Print E-mail Error[MENU], [4], [6], [0], [5]

This sets you would like to print only the items that can be printed normally when an error occurs. The items that the machine recognize to be erroneous are not printed.

NOTE:

- When this is set to ON, the range of the printed section varies according to the settings of Print Text Body and Print Header.
 - When this is set to OFF, the machine interrupts printing if any error is found.
- (1) Use the [↑] or [↓] keys to select the desired option (ON or OFF), then press the [ENTER] key.

```
PRINT E-MAIL ERROR
1.ON
2.OFF
```

ON

Selected to print only the items that can be printed normally when an error occurs.

OFF

Selected not to print a received E-mail when an error occurs.

- (2) After the “OPERATION COMPLETED” message is displayed, press the [STOP] key to return to the Standby Mode screen.

3.6 Print DSN [MENU], [4], [6], [0], [6]

This sets whether or not the DSN is printed when it is announced from the E-mail server or the recipient.

DSN: *Delivery Status Notification, is used to notify the sender of the status of the message that has been sent. The status, such as failed delivery, delayed delivery, successful delivery, or the gatewaying of a message into an environment that may not support DSNs, is notified when an E-mail with the DSN request is sent.*

- (1) Use the [↑] or [↓] keys to select the desired option (ON or OFF), then press the [ENTER] key.

```
PRINT DSN
1.ON
2.OFF
```

ON

Selected to print the DSN when it is notified.

OFF

Selected not to print the DSN even if it is notified.

- (2) After the “OPERATION COMPLETED” message is displayed, press the [STOP] key to return to the Standby Mode screen.

3.7 Print Disposition [MENU], [4], [6], [0], [7]

This sets whether or not the MDN is printed when it is announced from the recipient. The machine sends the MDN request to the recipient in every transmission, so that the machine receives the MDN when the recipient supports the MDN request.

MDN: Message Disposition Notification, is used to notify the sender of the disposition of a message after it has been successfully delivered to a recipient.

NOTE:

The MDN may not reply when the environment or the recipients does not support the MDN.

- (1) Use the [↑] or [↓] keys to select the desired option (ON or OFF), then press the [ENTER] key.

```
PRINT DISPOSITION
1.ON
2.OFF
```

ON

Selected to print the MDN when it is notified.

OFF

Selected not to print the MDN even if it is notified.

- (2) After the “OPERATION COMPLETED” message is displayed, press the [STOP] key to return to the Standby Mode screen.

3.8 Request DSN [MENU], [4], [6], [0], [8]

This sets whether or not the DSN is requested when sending a document from the machine using the Internet Fax function.

DSN: *Delivery Status Notification, is used to notify the sender of the status of the message that has been sent. The status, such as failed delivery, delayed delivery, successful delivery, or the gatewaying of a message into an environment that may not support DSNs, is notified when an E-mail with the DSN request is sent.*

NOTE:

The DSN may not reply when the Incoming E-mail server of the recipient does not support or generate the DSN. In this case, the error logs are retained in the E-mail server of the recipient. These error logs may be an obstacle to the mail server. Therefore, it is recommended to select OFF for this function if you are not sure that the E-mail server of the recipient supports the DSN.

- (1) Use the [↑] or [↓] keys to select the desired option (ON or OFF), then press the [ENTER] key.

```
REQUEST DSN
1.ON
2.OFF
```

ON

Selected to send the DSN request when the E-mail has been sent from this machine.

OFF

Selected not to send the DSN request when the E-mail has been sent from this machine.

- (2) After the "OPERATION COMPLETED" message is displayed, press the [STOP] key to return to the Standby Mode screen.

3.9 E-mail to FAX Gateway [MENU], [4], [6], [0], [9]

This sets the machine to allow forwarding the document that is received by the Offramp Gateway transmission. This is available only when the Receive Mode is set to "SMTP".

NOTE:

If this is set to ON, it is recommended to set up "Gateway Print" and "Gateway Security".

- (1) Use the [↑] or [↓] keys to select the desired option (ON or OFF), then press the [ENTER] key.

```
EMAIL TO FAX GTWY
1.ON
2.OFF
```

ON

Selected to enable the Offramp Gateway transmission.

OFF

Selected to disable the Offramp Gateway transmission.

- (2) After the “OPERATION COMPLETED” message is displayed, press the [STOP] key to return to the Standby Mode screen.

3.10 Gateway Print [MENU], [4], [6], [1], [0]

This sets whether to print the E-mail that is sent to the Offramp Gateway transmission. The machine prints the document before forwarding it to the facsimile, so that you can confirm what is sending using the Offramp Gateway. This setting is available when the “E-mail to FAX GTWY” is set to ON.

- (1) Use the [↑] or [↓] keys to select the desired option (ON or OFF), then press the [ENTER] key.

```
GATEWAY PRINT
1.ON
2.OFF
```

ON

Selected to print the document before forwarding it to the Offramp Gateway.

OFF

Selected not to print the document before forwarding it to the Offramp Gateway.

- (2) After the “OPERATION COMPLETED” message is displayed, press the [STOP] key to return to the Standby Mode screen.

3.11 Gateway Security [MENU], [4], [6], [1], [1]

This sets whether to check the fax number where the document is sent before allowing the Offramp Gateway.

If the fax number of the facsimile is not registered as One Touch dials or Abbreviated dials, the machine does not allow the Offramp Gateway for this document. This setting is available when the “E-mail to FAX GTWY” is set to ON.

NOTE:

Any persons, who know the sub-domain of your machine, can send documents from another Internet Fax machine by the Offramp Gateway transmission regarding your machine as the relay station. This item is for setting the security for E-mail to FAX Gateway function.

- (1) Use the [↑] or [↓] keys to select the desired option (ON or OFF), then press the [ENTER] key.

```
GATEWAY SECURITY
1 . ON
2 . OFF
```

ON

Selected to enable the Gateway security function.

OFF

Selected to disable the Gateway security function.

- (2) After the "OPERATION COMPLETED" message is displayed, press the [STOP] key to return to the Standby Mode screen.

3.12 Confirmation Timer [MENU], [4], [6], [1], [2]

This sets whether or not the alert report is printed when the machine does not receive an MDN reply from recipients, in the time interval set in "Set Confirm. Time." When the Internet Fax message that you sent from the machine is not received successfully by recipients, you cannot get any response from the MDN. In this case, you can print the alert report tells you the machine does not receive the MDN from the recipient by setting this item ON.

NOTE:

If the Incoming E-mail server of the recipient does not support the MDN, the machine prints the alert report whether the recipient receives the document successfully or not. If you are not sure that the recipients can reply the MDN request, it is recommended to select OFF.

- (1) Use the [↑] or [↓] keys to select the desired option (ON or OFF), then press the [ENTER] key.

```
CONFIRMATION TIMER
1.ON
2.OFF
```

ON

Selected to print the alert report if the machine does not receive a MDN reply.

OFF

Selected not to print the alert report even if the machine does not receive a MDN reply.

- (2) After the "OPERATION COMPLETED" message is displayed, press the [STOP] key to return to the Standby Mode screen.

3.13 Set Confirmation Time [MENU], [4], [6], [1], [3]

This sets the time interval to wait for the MDN reply before printing the alert report. This setting is available when "Confirm. Timer" is set to ON.

- (1) Use the [↑] or [↓] keys to select the desired time interval, then press the [ENTER] key.

```
SET CONFIRM. TIME
1.15MINS
2.30MINS
3.1HR
```

```
SET CONFIRM. TIME
3.1HR
4.4HRS
5.24HRS
```

15MINS - 24HRS

Select the interval time to wait for the MDN reply before printing an alert report.

- (2) After the "OPERATION COMPLETED" message is displayed, press the [STOP] key to return to the Standby Mode screen.

3.14 MSG Size Limit [MENU], [4], [6], [1], [4]

This sets the maximum size of the documents can be sent using the Internet Fax function. If the size of documents exceeds the maximum size, the machine sends the documents separately.

NOTE:

The document that contains only one page of an image cannot be separated even if the document size exceeds the limit. In this case, the machine interrupts the job.

- (1) Use the [↑] or [↓] keys to select the desired size, then press the [ENTER] key.

```
MSG SIZE LIMIT
1.0.5MBYTE
2.1.0MBYTE
3.1.5MBYTE
```

```
MSG SIZE LIMIT
3.1.5MBYTE
4.2.0MBYTE
5.2.5MBYTE
```

0.5MBYTE - 2.5MBYTE

Select the maximum size of the documents can be sent.

- (2) After the "OPERATION COMPLETED" message is displayed, press the [STOP] key to return to the Standby Mode screen.

4. Onramp Gateway Setup

4.1 How the Onramp Gateway transmission works

Onramp Gateway uses the relay function which is one of the ITU-T Mailbox features. The ITU-T F-code compliant facsimiles can send the document to the Relay Mailbox in the machine and then the machine transfers to the E-mail addresses of other Internet Fax machines and client computers programmed in the Relay Box.

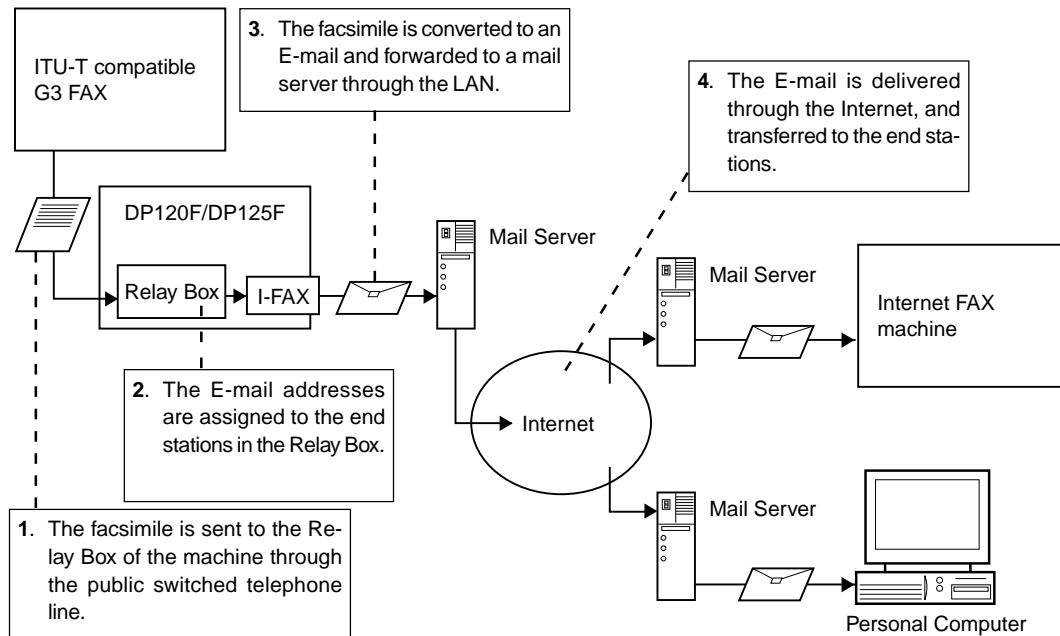


Fig. 1-4-1

4.2 How to setup for the Onramp Gateway

To use this machine as the Hub Station for Onramp Gateway transmission, set up a Relay Box in the DP120F/DP125F hub unit. Using this function, all ITU-T F-code compliant facsimiles can receive or transmit documents to and from the DP120F/DP125F. Relay Boxes must be setup prior to utilizing the DP120F/DP125F as a Relay Box Hub.

You can assign a maximum of 50 End Stations. Both E-mail addresses and facsimile numbers can be assigned in a Relay Box. When the End Stations are the facsimile numbers, you can assign them using Abbreviated Dial Numbers, One Touch Keys, and Group Numbers. However, when the End Stations are E-mail addresses, you can assign them only using Abbreviated Dial Numbers and One Touch Keys.

5. Offramp Gateway Setup

5.1 How the Offramp Gateway transmission works

This machine can be used as a Hub Station to forward E-mails from your client computer or Internet Fax machine to the any facsimile through the public switched telephone network.

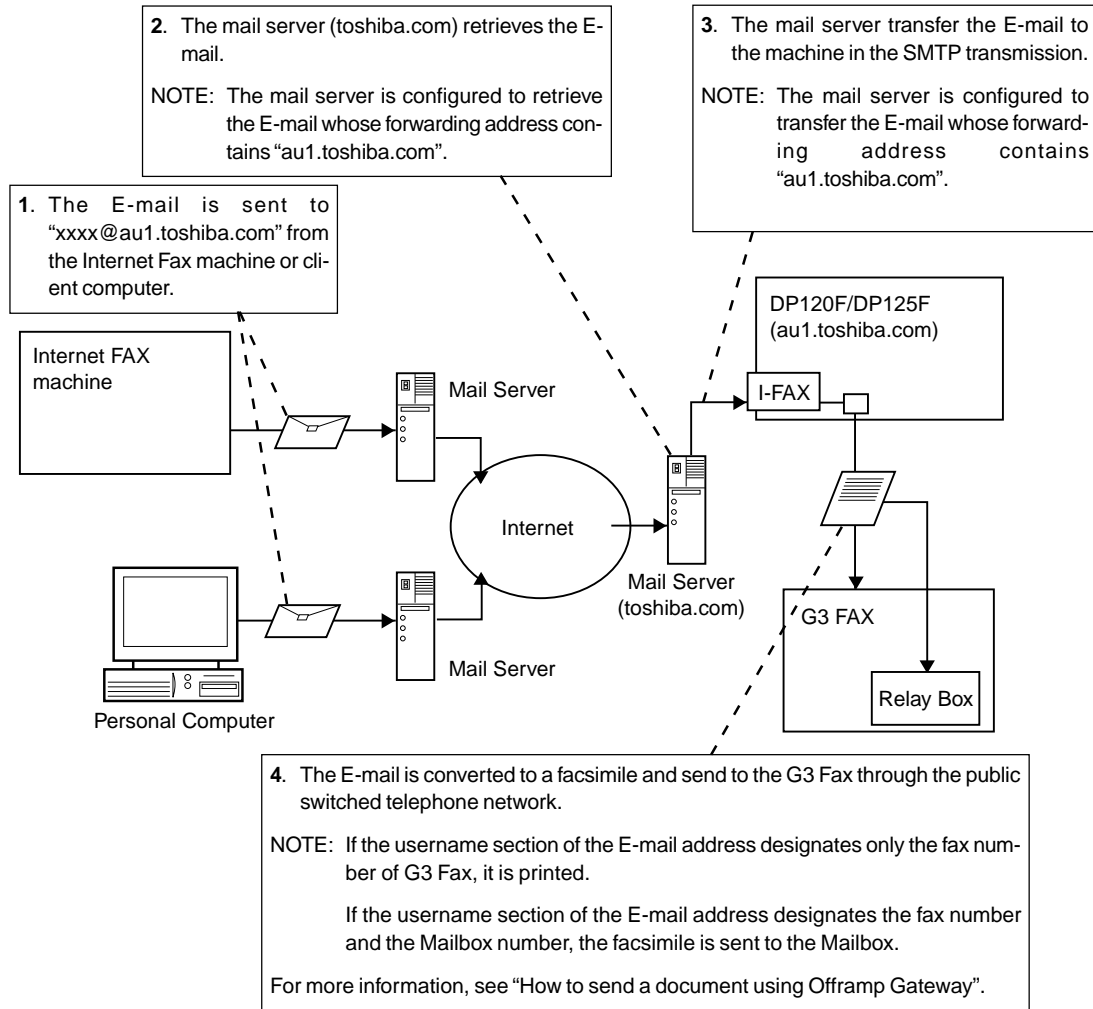


Fig. 1-5-1

This machine use Simple Mail Transfer Protocol (SMTP) to enable the Offramp Gateway transmission. "SMTP" is a server protocol for sending E-mail messages between servers. Usually the E-mail systems that transfer E-mails over the Internet use SMTP to transfer messages from one server to another. Therefore, when this machine use the SMTP to transfer E-mails, this machine works as a mail server.

For the DP120F/DP125F to receive transmissions in STMP mode from the mail server, the specific domain (that relates to the DP120F/DP125F) E-mail address must be set up on the host mail server. To set this on the mail server, the hostname of this machine must be designated. If the hostname of this machine is designated as "au1.toshiba.com", it is set to transfer the E-mail to this machine when an E-mail to "xxx@au1.toshiba.com" is delivered to the Internet.

5.2 How to send a document using Offramp Gateway

Using the Offramp Gateway transmission, you can send E-mail documents to the facsimile connected in the public switched telephone network. Also, this machine supports addressing the ITU-T Mailbox in the remote facsimile.

When you send a E-mail using the Offramp Gateway transmission, the syntax of the Offramp-email-address must be specified correctly.

● Sending to Facsimile

Offramp-email-address syntax:

FAX=xxxxxxxx@FQDN

["xxxxxxxx" is the telephone number of a facsimile.]

For example when the assigned domain name (FQDN) for this machine is "au1.toshiba.com" and the facsimile number is "1212121212":

i.e. FAX=1212121212@au1.toshiba.com

● Sending to Mailbox in Facsimile

Offramp/Mailbox-email-address syntax:

FAX=xxxxxxxx/T33S=yyyy@FQDN

["xxxxxxxx" is the telephone number of a facsimile.]

["yyyy" is the Mailbox number.]

SUPPLEMENT:

"T33S" is a syntax code to specify a Mailbox. When you send to a Mailbox of a facsimile using the Offramp Gateway, the facsimile number and the Mailbox number is separated with "/".

For example when the assigned domain name (FQDN) for this machine is "au1.toshiba.com", the facsimile number is "1212121212", and the Mailbox number is "1234":

i.e. FAX=1212121212/T33S=1234@au1.toshiba.com

NOTE:

Any international telephone number entry is not accepted for the facsimile number in the Offramp-email-address.

5.3 How to setup for the Offramp Gateway

To use this machine for the Offramp Gateway transmission, the E-mail account and E-mail properties for the Offramp Gateway must be setup correctly.

E-mail Account Setup	Description
E-mail Address	The domain of your E-mail address becomes a name added the sub-address for this machine and domain name of the SMTP server. For example, if the domain name of the mail server is "toshiba.com" and sub-address of this machine is "au1", the domain of the E-mail address for this machine will be "username@au1.toshiba.com".
Receive Mode	Set to "SMTP".
SMTP Server Address	Assign the IP address of the main SMTP server that provides the domain for this machine.

Offramp Gateway Properties Setup	Description
E-mail to FAX Gateway	This sets the machine to allow forwarding the document that is received by the Offramp Gateway transmission.
Gateway Print	This sets whether to print the document sent from the Internet Fax machine using the Offramp Gateway transmission. The machine prints the document before forwarding it to the facsimile, so that you can confirm what is sending using the Offramp Gateway.
Gateway Security	This sets whether to check the fax number where the document is sent before allowing the Offramp Gateway. If the fax number of the facsimile is not registered as One Touch dials or Abbreviated dials, the machine does not allow the Offramp Gateway for this document.

In addition, some settings are required to be operated on the main mail server (see Fig.1-5-1).

- The domain name for this machine must be assigned on the mail server.
- Configured to retrieve the E-mail whose address contains the domain name of this machine.
- Configured to transfer the E-mail to this machine when the mail server retrieve the E-mail whose address contains the domain name of this machine.

The setup procedure varies depending on the mail server applications. Refer to "Chapter 4 Mail Server Setup".

6. Additional Functions

The following additional functions are available when the Internet Fax kit is installed to the machine.

FTP Server Login Name:

This allows you to set the user name to log in the FTP server on the machine. The user name is required to transmit data between a personal computer and the machine using the TOSHIBA Viewer LAN version.

FTP Server Login Password:

This allows you to set the password to log in the FTP server on the machine. This password is required to transmit data between a personal computer and the machine using the TOSHIBA Viewer LAN version.

LAN FAX:

This allows you to set the IP address of the LAN FAX server. Only the LAN FAX server assigned here can access to this machine.

IPX/SPX Protocol:

This allows you to enable or disable the Network Interface Card to connect using the IPX/SPX protocol.

Frame Type:

This allows you to change the frame type of the Network Interface Card. When the machine connects to the NetWare server, the machine uses this frame type.

6.1 FTP Server Login Name [MENU], [3], [5], [0], [3], [0], [1]

This sets the user name to log in the FTP server. This must be set to control the machine using the TOSHIBA Viewer LAN version.

- (1) Enter the FTP login name, then press the [ENTER] key.

FTP SRV LOGIN NAME (MAX 32:) public

FTP SRV LOGIN NAME

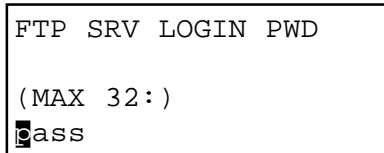
Enter the user name to login to the FTP server. "public" has been set as a default POP login name.

- (2) When the "FTP" menu is displayed, press the [STOP] key to return to the Standby Mode screen.

6.2 FTP Server Login Password [MENU], [3], [5], [0], [3], [0], [2]

This sets the password to log in the FTP server. This must be set to control the machine using the TOSHIBA Viewer LAN version.

- (1) Enter the FTP login password, then press the [ENTER] key.



```
FTP SRV LOGIN PWD
(MAX 32:)
pass
```

POP PASSWORD

Enter the password to login to the FTP server. "pass" has been set as a default FTP login password.

- (2) When the "FTP" menu is displayed, press the [STOP] key to return to the Standby Mode screen.

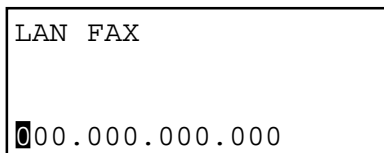
6.3 LAN FAX [MENU], [3], [5], [0], [4], [0], [1]

This sets the IP address of the LAN FAX server. Only the LAN FAX server assigned here can access to this machine.

NOTE:

LAN FAX server is a server to control the machine using the ImageVision2000 or SmartLink2000.

- (1) Enter the IP address of the LAN FAX server, then press the [ENTER] key.



```
LAN FAX
00.000.000.000
```

LAN FAX

Enter the IP address of the LAN FAX server.

- (2) After the "OPERATION COMPLETED" message is displayed, press the [STOP] key to return to the Standby Mode screen.

6.4 IPX/SPX Protocol [MENU], [3], [5], [0], [5], [0], [2]

This enables the IPX/SPX protocol and the machine to connect to a NetWare network.

- (1) Use the [↑] or [↓] keys to select the desired frame type, then press the [ENTER] key.

```
IPX/SPX  PROTOCOL
1.ON
2.OFF
```

ON

Selected to enable IPX/SPX.

OFF

Selected to disable IPX/SPX.

- (2) After the "OPERATION COMPLETED" message is displayed, the display return to the NETWORK (NOVELL) menu.
- (3) Continue to set another item, or press [0] + [1] to select "1.DONE" to exit the menu operation mode and return to the Standby Mode. The Network Interface Card starts initializing. Wait for few minutes until the Network Interface Card completes initializing.

6.5 Frame Type [MENU], [3], [5], [0], [5], [0], [3]

This sets the frame type of the Network Interface Card used for connecting to the NetWare server.

- (1) Use the [↑] or [↓] keys to select the desired frame type, then press the [ENTER] key.

```
FRAME TYPE
01.AUTO
02.802.3
03.ETHERNET II
```

```
FRAME TYPE
03.ETHERNET II
04.802.3 SNAP
05.802.2
```

AUTO

Selected to detect the frame type automatically.

802.3

Selected to set the frame type to "802.3".

ETHERNET II

Selected to set the frame type to "ETHERNET II".

802.3 SNAP

Selected to set the frame type to "802.3 SNAP".

802.2

Selected to set the frame type to "802.2".

- (2) After the "OPERATION COMPLETED" message is displayed, the display return to the NETWORK (NOVELL) menu.
- (3) Continue to set another item, or press [0] + [1] to select "1.DONE" to exit the menu operation mode and return to the Standby Mode. The Network Interface Card starts initializing. Wait for few minutes until the Network Interface Card completes initializing.

Chapter 4. MAIL SERVER SETUP

1. Lotus Domino
 - 1.1 Installing Domino Server
 - 1.2 Configuring Domino Server
 - 1.3 Creating Notes User
 - 1.4 Memorandum on Domino Environment
2. Sendmail and Qpopper
 - 2.1 Configuring Sendmail
 - 2.2 Configuring Qpopper
3. Qmail
 - 3.1 Configuring Qmail
4. Microsoft Exchange Server
 - 4.1 Configuring DNS Server
 - 4.2 Configuring Microsoft Exchange Server
5. About Client MUA

Chapter 4 Mail Server Setup

This chapter describes the Mail Server setup to enable the Internet Fax transmission of this machine.

1. Lotus Domino

This section describes an example of configuring the Lotus Domino Server R5 on Windows NT 4.0 server.

NOTE:

The instructions in this section are not always applicable to any network environments. Some settings have to be configured differently depending on the network environments or the requirements. Please remember that the instructions here are an example to set up the mail server.

1.1 Installing Domino Server

1.1.1 Installing Domino Server

- (1) Log into Windows NT server as "Administrator".
- (2) Insert the Domino Server CD-ROM to the CD-ROM drive.
- (3) The installer automatically starts. Click on [Install].
- (4) Click on [Servers].
- (5) Click on [Domino Application Server].
- (6) Click on [Custom Install].
- (7) The Lotus Domino Installation screen appears. Click on [Next].
- (8) The license agreement is displayed. Click on [Yes].
- (9) Enter the user name at the [Name] field and click on [Next].
- (10) Select the folder that the program and data are installed. Click on [Next].
- (11) Check [Domino as an NT Server] and click on [Next].
- (12) Rename the program folder name if required, and click on [Next]. Copying files starts.
- (13) After completing the file copy, the setup complete message is displayed. Remove the CD-ROM from the CD-ROM drive and check on [Yes, I want to restart my computer now.], and click on [Finish].
- (14) Reboot the Windows.

1.1.2 Setting Up Domino Server

- (1) After rebooting, log in as "Administrator". Click on [Start] and select [Programs]-[Lotus Applications]-[Lotus Domino Server] to run the Lotus Domino Server.
- (2) The [New Domino Server] tab page is displayed. Check [First Domino Server]. Then click on [>].
- (3) Check [Advanced Configuration] and click on [>].
- (4) Make sure [POP3] and [SMTP] at the [Internet Mail Packages] option are checked. (Check other items as your requirement.) Then click on [>].

- (5) Input each item of the Administration Settings. The values of each item vary depending on the network environments or requirements. Read the descriptions for each item shown the table below and designate the settings.

Category	Item	Description	Example
Organization Identity	Domino Name	Enter the domain name of the Domino Server.	domino
	Certifier Name	Enter the certifier name of the Domino Server.	domino
	Certifier Country Code	Enter the certifier country code of the Domino Server (optional).	01
	Certifier ID	Select "Allow Setup to create new certifier ID".	-
	Certifier Password	Enter the certifier password.	password
New Server Identity	Server Name	Enter the Domino Server Name.	dxm5q8
	Server's Hostname	Enter the full name of the Domino Server.	dxm5q8.ttec.com
	Server ID	Select "Allow Setup to create new server ID".	-
Administrator's Identity	Administrator's Name	First: Enter the first name of the Administrator.	-
		ML: Enter the middle name of the Administrator.	-
		Last: Enter the last name of the Administrator.	toshiba-tec
	Password	Enter the administrator password.	password
	Administrator's ID	Select "Allow Setup to create new administrator ID".	-
Network Options	Configure each item if required.		-
Communications Port	Configure each item if required.		-

- (6) After completing each item, click on [Finish].
 (7) Click on [Exit Configuration] after checking your configuration.

1.1.3 Changing the Startup option for Domino Server's Service

This operation is to configure the Domino Server's Service to be started automatically every time you start the Windows.

- (1) Click on [Start] and select [Settings]-[Control Panel] to open the Control Panel folder.
- (2) Double-click on [Services]. The Services screen appears.
- (3) Select "Lotus Domino Server (LotusDominoData)" from the Service list, and click on [Startup...].
- (4) Select [Automatic] for [Startup Type] and click on [OK].
- (5) Select "Lotus Domino Server (LotusDominoData)" from the Service list, and click on [Start]. The Domino Server start immediately. When booting up Domino Server Service, the Domino Server console appears.

1.2 Configuring Domino Server

1.2.1 Installing Notes Clients

- (1) Log into Windows NT server as "Administrator".
- (2) Insert the Domino Server CD-ROM to the CD-ROM drive.
- (3) The installer automatically starts. Click on [Install].
- (4) Click on [Clients].
- (5) Click on [All Clients].
- (6) Click on [Custom Install].
- (7) The Lotus Notes Installation screen appears. Click on [Next].
- (8) The license agreement is displayed. Click on [Yes].
- (9) Enter the user name at the [Name] field and click on [Next].
- (10) Select the folder that the program and data are installed. Click on [Next].
- (11) The screen to select components to be installed appears. There is no need to change the default settings. Click on [Next].
- (12) Rename the program folder name if required, and click on [Next]. Copying files starts.
- (13) After completing the file copy, the setup complete message is displayed. Click on [Finish].
- (14) Click on [Exit] to finish the installer.

1.2.2 Configuring Domino Server

- (1) Click on [Start] and select [Programs]-[Lotus Applications]-[Lotus Domino Administrator].
- (2) The Lotus Notes Client Configuration screen appears. Click on [Next].
- (3) Check [I want to connect to a Domino server.] and click on [Next].
- (4) Check [Set up a connection to a local area network (LAN).] and click on [Next].
- (5) Enter the name of your Domino server: server name, forward slash, then domain name of Domino (i.e. "server name/domain name of Domino"). Click on [Next].
- (6) Check [Use my name as identification] and enter the user name: administrator's name, forward slash, then domain name of Domino (i.e. "administrator's name/domain name of Domino"). Click on [Next].
- (7) Click on [Next].
- (8) Check [I don't want to create an Internet mail account] and click on [Next]. (You can create an Internet mail account later.)
- (9) Check [I don't want to connect to a news server] and click on [Next].
- (10) Check [I don't want to connect to another directory server] and click on [Next].
- (11) Check [I don't want to connect to the Internet through a proxy server] and click on [Next].
- (12) Check [Connect over my existing local area network] and click on [Next].
- (13) Connection setup has completed. Click on [Finish].
- (14) The Enter Password dialog appears. Enter the administrator password and click on [OK].
- (15) Client setup has completed. Click on [OK].
- (16) The warning message may appear to advise that the version of Internet Explorer is old. Click on [OK].
- (17) An error message appears. You can ignore it and click on [OK].
- (18) The Welcome window is displayed. Once you check the checkbox of [Don't show this again] in the upper right area, this window will no longer appear.
- (19) View the [Configuration] tab at the [Administration] tab.

- (20) Click on [Current Server Document] under [Server] in the left menu.
- (21) Click on [Edit Server] to change to the edit mode.
- (22) View the [Basics] tab and make the following settings.

Items	Description of Setting
Server name	Use the default value. (Already entered.)
Server title	Not required.
Domain name	Use the default value. (Already entered.)
Fully qualified Internet host name	Enter the complete Internet host name including the domain name. For example: dxm5q8.ttec.com (when server name is "dxm5q8" and the Internet domain name that the Domino server belongs is "ttec.com").
Cluster name	Not required.
Directory Assistance database name	Not required.
Directory Catalog database name on this server	Not required.
Optimize HTTP performance based on the following primary activity	Use the default value. (Select "Advanced (Custom Settings).")
Server build number	Unchangeable.
Administrators	Use the default value (Already entered.)
Routing tasks	Select "Mail Routing and SMTP Mail Routing".
SMTP listener task	Select "Enabled". (When the email server is used besides the Domino server, select "Disabled".)
Server's phone number(s)	Not required.
CPU count	Unchangeable.
Operating system	Not required.
Is this a Sametime server?	Select "Yes" or "No" according to your server environment.

- (23) When all settings are completed, click on [Save and Close].
- (24) Click on [Configuration] under [Server] at the left menu. Right-click on the server name of the domino server and select [Edit] to enter the edit mode.
- (25) View the [Basics] tab and make the following settings.

Items	Description of Setting
Use these settings as the default settings for all servers	Check the [Yes] checkbox.
Type-ahead	Select "Enabled".
International MIME Settings for this document	Check the [Enabled] checkbox.
Optimize LDAP queries	Select "No".
IMAP server returns exact size of message	Select "Disabled".
POP3 server returns exact size of message	Select "Disabled".
Comments	Enter if you require.

(26) Click on [Router/SMTP] tab and view the [Basics] tab. Make the following settings.

Items	Description of Setting
Number of mailboxes	Enter "2". Increase the number depending on the number of users. Low number may affect performance.
SMTP used when sending messages outside of the local internet domain	Select "Enabled".
SMTP allowed within the local internet domain	Select "All messages".
Servers within the local Notes domain are reachable via SMTP over TCP/IP	Select "Always".
Address lookup	Select "Fullname then Local Part".
Exhaustive lookup	Select "Disabled".
Relay host for messages leaving the local internet domain	No entry for the default setting. Enter the IP address for other mail server sends email through the designated mail server.
Local Internet domain smart host	Not required.
Smart host is used for all local internet domain recipients	Select "Disabled".
Host name lookup	Select "Dynamic then local".

(27) Click on the [MIME] tab and [Advanced] tab, and view the [Advanced Outbound Message Options] tab. Make the following settings.

Items	Description of Setting
Macintosh attachment conversion	Select "AppleDouble (base64 only)".
RFC822 phrase handling	Select "Use alt. name if available - otherwise DN".
Internet Mail server sends Notes private items in messages	Select "Disabled".
Notes fields to be removed from headers	Remove the setting and leave this blank.
When converting a multilingual message to MIME	Select [Send it in Unicode (UTF8)].
Character set name aliases	Not required.

(28) When all settings are completed, click on [Save and Close] to save the settings.

(29) Click on [Connection] under [Server] at the left menu, and click on [Add Connection].

(30) View the [Basics] tab and make the following settings.

Items	Description of Setting
Connection Type	Select "SMTP".
Source server	Use the default value. (Already entered.)
Connect via	Select "Direct connection".
Destination server	Enter the same entry as the Source server field.
Destination domain	Optional. Enter the "internet".
SMTP MTA relay host	Not required.

(31) Click on the [Replication/Routing] tab and make the following settings.

Items	Description of Setting
Replication task	Select "Disabled".
Replicate database of	Select "Low & Medium & High".
Replication Type	select "Pull Push".
Files/Directories to Replicate	No entry. (all if none specified).
Replication Time Limit	Not required.
Routing task	Select "SMTP Mail Routing".
Route at once if	Enter "1".
Routing cost	Enter "1".

(32) Click on the [Schedule] tab and make the following settings.

Items	Description of Setting
Connection	Select "ENABLED".
Connect at times	Enter the time to start/end connection to the server. For example: 01:00AM - 12:00PM
Repeat interval of	Enter the interval of connection in minutes.
Days of week	Enter the operation days of the week. For example: Sun, Mon, Tue, Wed, Thu, Fri, Sat

(33) When all settings are completed, click on [Save and Close] to save the settings.

(34) Click on [Domain] under [Messaging] at the left menu, and click on [Add Domain].

(35) View the [Basics] tab and make the following settings.

Items	Description of Setting
Domain type	Select "Global Domain".
Global domain name	Enter the Internet domain name. For example: ttec (in case of "ttec.com")
Global domain role	Select "R5 Internet Domains or R4.x SMTP MTA".
Use as default Global Domain (for use with all Internet protocols except HTTP)	Check the [Yes] checkbox.

(36) Click on the [Restrictions] tab and make the following settings.

Items	Description of Setting
Notes domains and aliases	Enter the domain name of the Domino server.
Alias separator character	Use the default value. ("=" is the default.)

- (37) Click on the [Conversions] tab and make the following settings under the [SMTP Address Conversion] group. (Any changes have to be made for settings under the [X.400 Address Conversion] group.)

Items	Description of Setting
Address format	Select "Name and Address".
Local primary Internet domain	Enter the Internet domain name. For example: ttec.com
Alternate Internet domain aliases	Not required.
Internet address lookup	Select "Disabled".
Local part formed from	Select "Short name".
Notes domain(s) included	Select "None".
Notes domain(s) position	Select "Left of '@'".
Notes domain separator	Select ". - period".
Outbound mail restriction	Select "Unrestricted".

- (38) When all settings are completed, click on [Save and Close] to save the settings.
 (39) Click on [Domains] under [Messaging] at the left menu, and click on [Add Domain].
 (40) View the [Basics] tab and make the following setting.

Items	Description of Setting
Domain type	Select "Foreign SMTP Domain".

- (41) Click on the [Routing] tab and make the following settings.

Items	Description of Setting
Internet Domain	Enter "*.*" (asterisks divided by a period)
Domain name	Enter the same setting as [Destination domain] set at Step 30. In this instruction, "internet" is entered.
Internet host	Not required.

- (42) When all settings are completed, click on [Save and Close] to save the settings.
 (43) Finish the Domino Administrator.

1.3 Creating Notes User

- (1) Make a copy of the following three files from the directory where the Domino is installed to any directory.
 - [Drive]:\lotus\domino\data\cert.id
 - [Drive]:\lotus\domino\data\server.id
 - [Drive]:\lotus\domino\data\user.id
- (2) Click on [Start] and select [Programs]-[Lotus Applications]-[Lotus Domino Administrator].
- (3) The warning message may appear to advise that the version of Internet Explorer is old. Click on [OK].
- (4) The Enter Password dialog appears. Enter the administrator password and click on [OK].
- (5) View the [People & Groups] tab at the [Administration] tab. Click the [People] menu at the right side of the screen, and click on [Register].
- (6) The Choose Certifier ID dialog appears. Select the "cert.id" file in the "[Drive]:\lotus\domino\data\" folder. Click on [Open].
- (7) The Enter Password dialog appears. Enter the certifier password and click on [OK].
- (8) The warning message appears to advise that the certifier ID entered contains no recovery information. Ignore this message and click on [OK].
- (9) The Register Person -- New Entry screen appears. Check the [Advanced] checkbox and click on [Basics] to view the [Basics] tab (an opened tab is marked with a red arrow). The following items are necessary or unnecessary to be set:
 - First name: Required
 - MI: Not Required
 - Last name: Required
 - Short name: Required
 - Password: Required
 - Set internet password: Required to be checked
 - Internet address: Required
 - Internet Domain: Required
- (10) Click on [ID Info] to view the [ID Info] tab. Check on the [In file] checkbox and click on [Set ID File...].
- (11) The Save ID File As dialog appears. Enter the file name and location to be saved, and click on [Save].
- (12) Click on [Add person] to temporarily add a user.
- (13) Click on [Register All] to register the user which was temporarily added.
- (14) A message, which informs you that the registration has completed, will appear. Click on [OK].
- (15) Click on the [View] menu and select [Refresh] to show the latest information of the registered users.
- (16) Please repeat the operation from step 5 to 15 until completing the registration for all users.

1.4 Memorandum on Domino Environment

Server settings will be stored into "\lotus\domino\datanames.nsf" (Domino address book). Three files, datanames.nsf, server.id, and cert.id in the "\lotus\domino" folder are important.

- Client settings are controlled by \lotus\notes\data\user.id (administrator id), name.nsf (including personal address book and client settings), desktop5.dsk (environment under which Client is started).
- There are cases that a next replication time is not set after Notes is started due to a bug. Pressing the Start button when starting Notes solves this problem.
- In case that a DNS server is not used, Note Client can access Notes Server (Domino Server) only when IP address and host name (of a PC in which Domino is installed) are written in a hosts file.

2. Sendmail and Qpopper

This section describes an example of configuring the Sendmail and Qpopper for RPM based Linux.

NOTE:

The instructions in this section are not always applicable to any network environments. Some settings have to be configured differently depending on the network environments or the requirements. Please remember that the instructions here are an example to set up the mail server.

2.1 Configuring Sendmail

2.1.1 Installing Sendmail

- (1) At first, you can check whether sendmail operates because your system is RPM based Linux. RPM based Linux is RedHat, Turbo and etc.

Enter the following command:

```
$ rpm -q -a | grep sendmail
```

- (2) If sendmail was installed our system, the package name of sendmail is displayed. If sendmail was not installed, you need to install it. Move to directory of sendmail RPM package. And the following command run. You might need to be root by su command and etc.

```
# rpm -ivh (a package name of sendmail)
```

- (3) If this command finished running, installing of sendmail is completed.

2.1.2 Running Sendmail

- (1) A Record and MX Record for this server are added to the DSN server.
- (2) Check "/etc/resolv.conf" to confirm your mail server is looking to DNS server correctly.
- (3) Check "/etc/hosts.allow" and "/etc/hosts.deny" to confirm whether your mail server is having restricted SMTP. If the status is true, modify these files. The correct method is written to the following online manual.

```
# man 5 hosts_access
```

- (4) To control sendmail, the following command run.

```
# /etc/rc.d/init.d/sendmail (start|stop|restart)
```

(Please select one of options in (.))

2.1.3 Creating a sendmail.cf file for Sendmail

This section describes the example for creating a sendmail.cf file. This example uses the WIDE Sendmail.cf Generation Package to create a sendmail.cf file.

- (1) Download the WIDE version of CF package from the Internet. You can download from the following URL: <ftp://ftp.kyoto.wide.ad.jp/pub/mail/CF/CF-3.7Wpl2.tar.gz>

- (2) Enter the following command to extract the CF-3.7Wpl2 package.

```
$ tar zxvf CF-3.7Wpl2.tar.gz
$ cd CF-3.7Wpl2
```
- (3) Enter the following command to make the programs of CF.

```
$ make cleantools
$ make tools
$ make samples
```
- (4) Enter the following command to edit ".def" file to your wished configuration. ".def" file samples are included in Standard directory.

```
$ vi sendmail-ifax.def
```

Please refer to "2.1.4 Contents of files using sendmail with iFax" for an example of ".def" file's contents.
- (5) If you use static mail routes, you need to edit a "sendmail.route" file. Enter the following command to edit "sendmail.route" file.

```
$ vi sendmail.route
```

Please refer to "2.1.4 Contents of files using sendmail with iFax" for an example of ".route" file's contents.
- (5) Enter the following command to make a "sendmail.cf" file. ".cf" file name subscribing at this line is the same as before ".def". For example, if ".def" file is "foo.def", ".cf" file is "foo.cf".

```
$ make sendmail-ifax.def
```
- (6) If you completed to make a "sendmail-ifax.cf" file, enter the following command to copy the file to an appropriate place. You might need to be root by su command and etc.

```
# mv /etc/sendmail.cf /etc/sendmail.cf.org
# mv sendmail-ifax.cf /etc/sendmail.cf
```
- (7) Enter the following command to restart Sendmail.

```
# kill -HUP (a pid of sendmail)
```

(Use "ps x" command when you would like to check a pid of sendmail.)
Or you can use the following command instead of "kill" command.

```
# /etc/rc.d/init.d/sendmail start
```

2.1.4 Contents of files using sendmail with iFax

This section describes an example for settings and contents of files according to the network environment.

Case 1

The following figure shows an example of network environment.
tais.net has IP addresses which are 159.119.*.*



In this case, MX record of tais.net set to mail.tais.net. You need to add the following content to tais.net's zone file. ";" of the head of the line mens the zone name in named.conf.

```
!--- a example of MX record setting for tais.net's zone file
@ IN MX 10 mail.tais.net
!--- a example of MX record setting for tais.net's zone file
```

sendmail-ifax.def is edited as follow:

```
I would like you to rewrite the contents suitably.
'#' of the head of the line shows a comment out.
```

```
#--- sendmail-ifax.def
# type of sendmail.cf
CF_TYPE=R8V8
# OS type (choose a file name in ostype directory)
OS_TYPE=linux-redhat
# with sendmail.mx (yes/no)
# this line always yes, maybe.
MX_SENDMAIL=yes
# local domain name (defined automatically) <Dm>
MY_DOMAIN=tais.net
# local host name (defined automatically) <Dw>
# V1: with domain name; V5: without domain name
MY_NAME=mail
# addresses which should be accepted as local
ACCEPT_ADDRS=''
# general mailer description
# If there is the smrsh program in mail server, you should write
# is as follows. When you check it, you can use which or whereis
# commands.
# usage:
# $ which smrsh
# $ whereis smrsh
PROG_MAILER_PATH='/usr/sbin/smrsh'
# resolve BITNET traffic (static/mx/no/auto)
# You may select auto to this line.
BITNET=auto
# static routing description file
```

```

STATIC_ROUTE_FILE=sendmail.route
# domain names to be delivered directly (all/none/"domain names")
DIRECT_DELIVER_DOMAINS=all
# LOCAL_HOST_* does not check senders address
# '159.119' means '159.119.*.*'.
LOCAL_HOST_IPADDR=159.119
LOCAL_HOST_DOMAIN=tais.net
# ALLOW_RELAY_* does not check relay address
ALLOW_RELAY_TO=tais.net
#--- sendmail-ifax.def

```

sendmail.route is read from sendmail-ifax.def's configuration. This file describe static routes of mail transfer. GW line is written the protocol using mail transfer and mail server name. This mail server name must be registered in /etc/hosts. DOM line is written a domain name(right side of @ mark) of the mail address.

```

#--- sendmail.route
GW smtp:ifax.tais.net
DOM tais.net
#--- sendmail.route

```

Case 2

The following figure shows another example of network environment. tais.net has IP addresses which are 159.119.*.*.



sendmail-ifax.def and tais.net's zone file sets up like Case 1. sendmail.route configuration is as follows.

```

#--- sendmail.route
GW smtp:ifax.mail.tais.net
DOM tais.net
#--- sendmail.route

```

2.2 Configuring Qpopper

2.2.1 Installing Qpopper

- (1) If you have not get Qpopper, please get the program. You can download from the Internet. The URL is "<ftp://ftp.qualcomm.com/eudora/servers/unix/popper/>".
- (2) You may have "qpopper4.x.x.tar.gz" file (latest version is "qpopper4.0.2.tar.gz"). Enter the following command to extract the files:

```

$ tar zxvf qpopper4.0.2.tar.gz
$ cd qpopper4.0

```

- (3) Enter the following command to compile Qpopper.

```
$ ./configure --enable-specialauth
```

```
$ make
```

- (4) After the command has finished, Enter the following command to install Qpopper program to your system. You might need to be root by su command and etc.

```
# make install
```

- (5) After the installation is completed, modify the "/etc/inetd.conf" file to contain the line below.

```
pop3 stream tcp nowait root /usr/local/lib/popper qpopper -s
```

- (6) Modify the "/etc/services" file to include the following line.

```
pop3 110/tcp #Post Office
```

- (7) Enter the following command to restart inetd.

```
# kill -HUP (a pid of inetd)
```

3. Qmail

This section describes an example of configuring the Qmail.

NOTE:

The instructions in this section are not always applicable to any network environments. Some settings have to be configured differently depending on the network environments or the requirements. Please remember that the instructions here are an example to set up the mail server.

3.1 Configuring Qmail

3.1.1 Installing and setting Qmail

- (1) You must set up the Qmail groups and the Qmail users before completing the programs. Enter the following command. You might need to be root by su command and etc.

```
# groupadd nofiles
# groupadd qmail
# useradd -g nofiles -d /var/qmail/alias alias
# useradd -g nofiles -d /var/qmail qmaild
# useradd -g nofiles -d /var/qmail qmail1
# useradd -g nofiles -d /var/qmail qmailp
# useradd -g qmail -d /var/qmail qmailq
# useradd -g qmail -d /var/qmail qmailr
# useradd -g qmail -d /var/qmail qmails
```

- (2) Enter the following command to create the Qmail home directory.

```
# mkdir /var/qmail
# tar xzpf qmail-1.03.tar.gz
# cd qmail-1.03
```

- (3) Enter the following command to compile the programs and create the Qmail directory tree.

```
# make setup check
```

- (4) Enter the following command to run config script.

```
# ./config
```

NOTE:

If the config script output error message is displayed, you need to edit Qmail's configuration. Please refer to "3.1.2 Qmail's Configuration Files"

- (5) Enter the following command to enable mail addresses of postmaster, MAILER-DAEMON and root.

```
# (cd ~alias; touch .qmail-postmaster .qmail-mailer-daemon .qmail-root)
# chmod 644 ~alias/.qmail*
```

- (6) Set up qmail-smtp in /etc/inetd.conf. (All must be entered on one line.)

```
smtp stream tcp nowait qmaild /var/qmail/bin/tcp-env tcp-env
/var/qmail/bin/qmail-smtpd
```

- (7) Describe setting of TCP Wrappers to /etc/hosts.allow.
- ```
tcp-env : localhost 159.119.0.0/16 : setenv = RELAYCLIENT
tcp-env : ALL : ALLOW
```
- (The part "159.119.0.0/16" must be changed suitably to your network.)
- (8) Enter the following command to copy /var/qmail/boot/home to /var/qmail/rc.
- ```
# cp /var/qmail/boot/home /var/qmail/rc
```
- (9) Enter the following command to stop the sendmail daemon.
- ```
/etc/rc.d/init.d/sendmail stop
```
- (10) Enter the following command to check whether you have any messages in the sendmail queue. A command for check is "sendmail -bp". You will have to try flushing them with "sendmail -q".
- ```
# sendmail -q
# sendmail -bp
```
- (11) Transpose the sendmail program to the Qmail attachment. Enter the following command.
- ```
cd /usr/sbin
mv sendmail sendmail.bak
chmod 0 sendmail.bak
ln -s /var/qmail/bin/sendmail sendmail
```
- (12) Comment out the comsat line in /etc/inetd.conf, and enter the following command to restart your inetd.
- ```
# /etc/rc.d/init.d/inetd restart
```
- (13) Add the following command to your boot scripts (/etc/rc.d/rc.local). This make the Qmail daemons start whenever your system reboots.
- ```
csch -cf '/var/qmail/rc &'
```
- (14) Restart your computer.

### 3.1.2 Qmail's Configuration Files

For using Qmail, there are several files for configuration.

| Control File  | Default  | Command using this file |
|---------------|----------|-------------------------|
| me            | required | all Qmail's programs    |
| defaultdomain | me       | qmail-inject            |
| defaulthost   | me       | qmail-inject            |
| locals        | me       | qmail-send              |
| plusdomain    | me       | qmail-inject            |
| rcphosts      | (none)   | qmail-smtpd             |

The descriptions of these files are as following:

### **me**

Write the FQDN of the mail server to this file. This file is used as a default value when there are not other files, defaultdomain, locals, plusdomain, and rcphosts.

Example:

```
mail.toshiba.com
```

### **defaultdomain**

Write a domain name that is added after the host part when the domain name of an E-mail address is without a dot.

Example:

```
toshiba.com
```

(In this case, an E-mail address "ifax@ifax" becomes "ifax@ifax.toshiba.com".)

### **defaulthost**

Write a domain name that is added after the name when "@domainname" is abridged from an E-mail address.

Example:

```
toshiba.com
```

(In this case, an E-mail address "ifax" becomes "ifax@toshiba.com".)

### **locals**

Write domain names which the email server transfers as a local transmission. When a received E-mail contains the domain name written in this file, the E-mail is controlled by qmail-local.

Example:

```
localhost
localhost.ifax.toshiba.com
mail.toshiba.com
ifax.toshiba.com
```

### **plusdomain**

Write a domain name that is added after "+" when the domain name of an E-mail address is finished with "+". (For example, "ifax@ifax+")

### **rcphosts**

Write domain names that the mail server should receive from the Internet. The domain name which may appear in RCPT of SMTP. The mail of domain which has not appeared in rcphosts is not received.

When writing a domain name started with a dot (for example, ".toshiba.com"), this means that the email server receives all E-mails contains the domain "toshiba.com".

### **NOTE:**

rcphosts is disregarded when environment variable RELAYCLIENT is set up. In this case, qmail-smtpd receives all mails.

### 3.1.3 Installing and setting qmail-pop3d

- (1) Enter the following commands to install checkpassword.

```
$ tar zxvf checkpassword -0.81.tar.gz
$ cd checkpassword -0.81
$ make
su
cp checkpassword /bin/
chmod 700 /bin/checkpassword
```

- (2) Check /etc/services. You need check whether there is the following line in it.

```
pop3 110/tcp
```

- (3) Set up qmail-pop3d in /etc/inetd.conf. (All must be entered on one line.)

```
pop3 stream tcp nowait root /var/qmail/bin/qmail-popup YOURHOST
/bin/checkpassword /var/qmail/bin/qmail-pop3d Maildir
```

- (4) Enter the following command to restart inetd.

```
/etc/rc.d/init.d/inetd restart
```

- (5) Set up Maildir for all accounts that use POP3. For example, creating an account for "ifax" is as following. You might need to be root by su command etc.

```
su ifax
$ cd /home/ifax
$ /var/qmail/bin/maildirmake $HOME/Maildir
$ echo ./Maildir/ > ~/.qmail
$ chmod 644 ~/.qmail
$ exit
```

## 4. Microsoft Exchange Server

This section describes an example of configuring the Microsoft Exchange Server 5.5 on Windows NT 4.0.

### NOTE:

The instructions in this section are not always applicable to any network environments. Some settings have to be configured differently depending on the network environments or the requirements. Please remember that the instructions here are an example to set up the mail server.

### 4.1 Configuring DNS Server

Before you set up the Microsoft Exchange Server, you must set up the DNS server.

#### 4.1.1 Creating new DNS server name

##### 4.1.1.1 Starting DNS Manager

- (1) Log into Windows NT server as "Administrator".
- (2) Click on [Start] and select [Programs]-[Administrative Tools (Common)]-[DNS Manager].
- (3) The Domain Name Service Manager starts.

##### 4.1.1.2 Creating DNS Server

- (1) Click on the [DNS] menu and select [New Server...].
- (2) The Add DNS Server dialog appears. Enter the name of DNS server and click on [OK].
- (3) The new DNS server is added under the Server List.

##### 4.1.1.3 Creating New Zone

When this server has not managed the domain that your mail server will belong, you must create a zone.

- (1) Select the DNS server you added from the Server List. Click on the [DNS] menu and select [New Zone...].
- (2) The Creating new zone for XXXX (XXXX is a DNS server name) dialog appears. Select [Primary] and click on [Next].
- (3) Enter the internet domain name of your local area network in the [Zone Name] field (For example: toshiba.com). The Zone File name is automatically entered when you enter the Zone Name (For example: "toshiba.com.dns" when the Zone name is "toshiba.com").
- (4) Click on [Next].
- (5) Click on [Finish] to complete creating a zone.

##### 4.1.1.4 Creating New Host

- (1) Select the zone that you created under the DNS server from Server List. The zone information details are displayed at the right window.
- (2) Click on the [DSN] menu and select [New Host...].

- (3) The New Host dialog appears. Enter the host name and IP address of the Exchange Server and click on [Add Host].
- (4) Enter the host name and IP address of the Internet Fax unit and click on [Add Host].
- (5) When all host names that you require are added, click on [Done] to close the New Host dialog.
- (6) Click on the [DNS] menu and select [New Record...] to add a MX record for the Exchange Server.
- (7) The New Resource Record dialog appears. Select "MX Record" in the Record Type list, and enter the host name and Mail Exchange Server DNS Name for the Exchange Server. At the [Preference Number], enter "10" and click on [OK].
- (8) Click on the [DNS] menu and select [New Record...] to add a MX record for the Internet Fax unit. (This is required when you perform the Offramp Gateway transmission using the Internet Fax unit.)
- (9) The New Resource Record dialog appears. Select "MX Record" in the Record Type list, and enter the host name and Mail Exchange Server DNS Name for the Internet Fax unit. At the [Preference Number], enter "10" and click on [OK].
- (10) Restart your computer (or restart the DNS Service).

## **4.2 Configuring Microsoft Exchange Server**

### **4.2.1 Installing Microsoft Exchange Server**

- (1) Insert the CD-ROM for the Microsoft Exchange Server and start the installer.
- (2) The Organization and Site screen appears. Select [Create a new site], and then enter the Organization Name and Site Name. Those will be the MTA's domain name. For example, when you enter "EXCH" for the Organization Name and "TOSHIBA" for the Site Name, the MTA's domain name will be "EXCH.TOSHIBA.com".
- (3) Click on [OK].
- (4) The Microsoft Exchange Server Setup screen appears. Click on [Run Optimizer].
- (5) The Microsoft Exchange Performance Optimizer screen appears. Click on [Next].
- (6) The screen shows how the system parameters should be configured. If you do not have to change these items, use the default settings and click on [Next].
- (7) The Warning message is displayed. Click on [Next].
- (8) The Restart Services list is displayed. Click on [Finish] to complete the installation.

### **4.2.2 Creating Internet Mail Service**

- (1) Click on [Start] and select [Programs]-[Microsoft Exchange]-[Microsoft Exchange Administrator].
- (2) The Connect to server dialog appears. Click on [Browse].
- (3) The Server Browser dialog appears. Select this server and click on [OK].
- (4) Click on [OK] to connect to the server.
- (5) The Microsoft Exchange Administrator starts.
- (7) Select the "connections" container at the left menu.
- (6) Click on the [File] menu and select [New Other]-[Internet Mail Service...].
- (7) The Internet Mail Wizard appears. Click on [Next].
- (8) Click on [Next].

- (9) Select the Exchange Server Name to install the Internet Mail Service. Click on [Next].

**NOTE:**

If you do not install the DNS server on your computer, the error message is displayed after clicking on [Next]. In this case, install the DNS server and try again. Or if the DNS server is running another PC, you have to set up the TCP/IP Protocol on this computer to use the DNS server. To do this, open the TCP/IP Protocol Properties dialog from the Network properties, and enter the Host Name and Domain of DNS server at the [DNS] tab.

- (10) Select [Use domain name system [DNS] to send mail (Typical)] and click on [Next].
- (11) Select [All internet mail addresses (Typical)] and click on [Next].
- (12) The domain name of the Internet mail address is displayed. Usually use the entered address. Click on [Next].
- (13) Select [(Create/Use) the mailbox called Administrator] and click on [Next].
- (14) Enter the administrator password and click on [Next].
- (15) Click on [Finish]. The Installing Internet Mail Service message is displayed.
- (16) After few minutes, the message is displayed that tells you the Internet Mail Service successfully installed and started. Click on [OK] to complete the operation.

### **4.2.3 Creating Internet Mail Account for Users**

- (1) Click on [Start] and select [Programs]-[Microsoft Exchange]-[Microsoft Exchange Administrator].
- (2) Select the "recipients" container at the left menu.
- (3) Click on the [File] menu and select [New Mailbox].
- (4) The Properties dialog appears. At the [General] tab, enter the user name in the [Display] field and [Alias] field, and click on [OK].
- (5) The Primary Windows NT Account dialog appears. Select [Create a new Windows NT account] and click on [OK].
- (6) The Create Windows NT Account dialog appears. Usually use the value already entered. Click on [OK].
- (7) The Warning message is displayed. This message tells that the password for new account set as no password (blank). In this case, the user can decide the password at the first time the user connects to the mail server.
- (8) Click on [OK].

**NOTE:**

If you want to set the password for an account other than allowing to user to set the password, use the User Manager in the Administrator's Tool Program folder to set a permanent password.

## 5. About Client MUA

This section describes the memorandum for settings of Client MUA on client computers. Before sending an E-mail to the Internet Fax unit from PC clients, clients must understand the restrictions and limitations of the E-mail that can be received by the Internet Fax unit.

- Most email applications can set up the format of the body text of an E-mail message: plain text format or HTML format. When an E-mail has been sent to the Internet Fax in a HTML format, the machine prints out the source text of the HTML message (that means the body texts are printed with HTML tags.) Therefore, it is recommended to use a plain text format when sending an E-mail to the Internet Fax unit from PC clients.
- The Internet Fax unit supports only the MIME format text. The text format must be set to the MIME type when sending an E-mail to the Internet Fax unit from PC clients.
- The Internet Fax unit can print out only text messages and TIFF-FX image files attached to an E-mail. In addition, the resolution of the TIFF-FX images should be 200x100, 200x200, 200x400, or 400x400.

# Chapter 5. TROUBLESHOOTING

1. Error Message
  - 1.1 Input/Output Image Error
  - 1.2 I-FAX Receive Error
  - 1.3 I-FAX Send Error
  - 1.4 Output Trap Error
  - 1.5 Analyzing MIB Error
  - 1.6 Operation Error
  - 1.7 E-mail Check Error
  - 1.8 Battery Error
  - 1.9 Others
  - 1.10 Test ErrorChap
2. Error Codes Printed on Reports
  - 2.1 Error Codes for Receiving I-Fax
  - 2.2 Error Codes for Transmitting I-Fax

# Chapter 5 Troubleshooting

This chapter describes how to download the update firmware for the Internet Fax PC Board, and the Network Interface Card.

## 1. Error Message

When an error occurs, an error message is indicated on the LCD display.

### 1.1 Input/Output Image Error

| Display            | Cause                                                                                                                             | Solution                                                                                                                                                                              |
|--------------------|-----------------------------------------------------------------------------------------------------------------------------------|---------------------------------------------------------------------------------------------------------------------------------------------------------------------------------------|
| IMAGE INPUT ERROR  | The connectors of the Internet Fax unit are not connected correctly, or either the machine or Internet Fax unit has been damaged. | Confirm that all connectors of the Internet Fax unit are connected to the machine correctly. If this Error Message is repeatedly displayed, the Internet Fax unit should be replaced. |
| IMAGE OUTPUT ERROR | The connectors of the Internet Fax unit are not connected correctly or the machine or Internet Fax unit has been damaged.         |                                                                                                                                                                                       |

### 1.2 I-FAX Receive Error

| Display              | Cause                                                                                            | Solution                                                                                                                                                                                                                                                  |
|----------------------|--------------------------------------------------------------------------------------------------|-----------------------------------------------------------------------------------------------------------------------------------------------------------------------------------------------------------------------------------------------------------|
| IMAGE DECODING ERROR | The received document includes unknown format files or damaged image or text data.               | Ask the sender to re-send a image file in the TIFF format.                                                                                                                                                                                                |
| MAIL RECEIVING ERROR | Failed to receive the document from the E-mail server.                                           | Confirm the E-mail account settings and E-mail properties are correctly configured.                                                                                                                                                                       |
| MEMORY OVERFLW       | There is not enough memory to receive or send the document.                                      | When this error message is displayed during receiving an E-mail, ask the sender to re-send the document separately to reduce the size of the document.<br>When this error is displayed during sending an E-mail, reduce the size set at "MSG Size Limit". |
| ERROR ANALY. MAIL    | The document is sent in unknown format by the E-mail server or E-mail application of the sender. | Ask the sender that the E-mail application and the E-mail server is compatible with the Internet Fax.                                                                                                                                                     |

### 1.3 I-FAX Send Error

| Display              | Cause                                          | Solution                                                                                                                                                                                                                                |
|----------------------|------------------------------------------------|-----------------------------------------------------------------------------------------------------------------------------------------------------------------------------------------------------------------------------------------|
| MAIL DECODING ERROR  | The Internet Fax unit has been damaged.        | Replace the Internet Fax unit.                                                                                                                                                                                                          |
| MAIL EDITING ERROR   | The Internet Fax unit has been damaged.        |                                                                                                                                                                                                                                         |
| MAIL SENDING ERROR   | The destination is not found.                  | Confirm the sending or forwarding address is correct.                                                                                                                                                                                   |
| SMTP SRV NOT CONNECT | The machine cannot connect to the SMTP server. | Confirm the setting of "SMTP Server Address" that the IP address of the SMTP server correctly assigned. If this Error Message is repeatedly displayed, check if the settings on the mail server are correctly setup or the mail server. |
| HOST NAME ERROR      | Host Name is not set correctly.                | Set the "Host Name" correctly.                                                                                                                                                                                                          |
| E-MAIL ADDRESS ERROR | Your E-mail address is not set correctly.      | Set the "E-mail Address" correctly.                                                                                                                                                                                                     |
| SMTP SRV NOT EXIST   | The SMTP server address is not assigned.       | Set the "SMTP Server Address".                                                                                                                                                                                                          |

### 1.4 Output Trap Error

| Display           | Cause                                                             | Solution                                                                                                                                                                                                              |
|-------------------|-------------------------------------------------------------------|-----------------------------------------------------------------------------------------------------------------------------------------------------------------------------------------------------------------------|
| OUTPUT TRAP ERROR | The Network Interface Card does not work properly while trapping. | Power your machine off, then back on. If the error condition is cleared, confirm normal operation. If this Error Message is repeatedly displayed, the Network Interface Card or Internet Fax unit should be replaced. |

### 1.5 Analyzing MIB Error

| Display   | Cause                                        | Solution                                                                                                                                                          |
|-----------|----------------------------------------------|-------------------------------------------------------------------------------------------------------------------------------------------------------------------|
| MIB ERROR | The machine receives an invalid MIB request. | Confirm the sender's computer has no problems. If this Error Message is repeatedly displayed, the Network Interface Card or Internet Fax unit should be replaced. |

## 1.6 Operation Error

| Display              | Cause                                                                                                                                                          | Solution                                                                                                                                                                 |
|----------------------|----------------------------------------------------------------------------------------------------------------------------------------------------------------|--------------------------------------------------------------------------------------------------------------------------------------------------------------------------|
| NETWORK ACCESS ERROR | The Network Interface Card or Internet Fax unit has been damaged.                                                                                              | The Network Interface Card or Internet Fax unit must be replaced.                                                                                                        |
| NETWORK INITIALIZING | The Network Interface Card is initializing.                                                                                                                    | Wait until the Network Interface Card completes initializing.                                                                                                            |
| INVALID ZERO DATA    | "0" is entered at "Body Page Limit" or "000" is set to any 8-digit section of "IP address".                                                                    | Input a correct value.                                                                                                                                                   |
| CANNOT SET TCP/IP    | This error message is displayed by setting the IP address, Subnetmask, and Default Gateway while the machine obtains the TCP/IP settings from the DHCP server. | Set OFF the "BootP/DHCP" to assign the TCP/IP manually.                                                                                                                  |
| INVALID HOST NAME    | The invalid character is entered for Host Name.                                                                                                                | Input a correct value.                                                                                                                                                   |
| INVALID E-MAIL ADDR  | The invalid character is entered for E-mail Address.                                                                                                           |                                                                                                                                                                          |
| INVALID ERR E-MAIL   | The invalid character is entered for Error E-mail Forward Address.                                                                                             |                                                                                                                                                                          |
| INVALID POP3 LOGIN   | The invalid character is entered for POP Login Name.                                                                                                           |                                                                                                                                                                          |
| INVALID POP3 PWD     | The invalid character is entered for POP Password.                                                                                                             |                                                                                                                                                                          |
| INVALID FTP LGN NAME | The invalid character is entered for FTP Server Login Name.                                                                                                    |                                                                                                                                                                          |
| INVALID FTP PASSWORD | The invalid character is entered for FTP Server Login Password.                                                                                                |                                                                                                                                                                          |
| ENTRY AREA FULL      | There is not enough memory to store the One Touch key, Speed Dial, or dialing history.                                                                         | Delete the unnecessary address data.                                                                                                                                     |
| INVALID DATA         | The communication problems in the interfaces between the Mother PCB and I-FAX PCB occur.                                                                       | Turn off the machine and then turn on to restart the machine. If the error cannot be recovered, the Internet Fax unit or the Mother PCB of the machine must be replaced. |

## 1.7 E-mail Check Error

| Display              | Cause                                                                                                     | Solution                                                                                                                                                           |
|----------------------|-----------------------------------------------------------------------------------------------------------|--------------------------------------------------------------------------------------------------------------------------------------------------------------------|
| NOT POP3 RECV. MODE  | This error message is displayed by pressing the [Check E-mail] key while the Receive Mode is set as SMTP. | Select POP for Receive Mode setting if your Incoming E-mail server is the POP server. If the Receive Mode is set to SMTP, the [Check E-mail] key is not available. |
| POP3 SRV. NOT EXIST  | The machine cannot find the POP server in the Network when checking the E-mail.                           | Make sure that the mail server is properly running on the network.                                                                                                 |
| IP ADDRESS NOT EXIST | The IP address is not assigned.                                                                           | Assign the IP address.                                                                                                                                             |
| E-MAIL NOT EXIST     | No E-mail has been received.                                                                              | -                                                                                                                                                                  |
| BAD POP3 LOGIN NAME  | The your user name is locked to log in the POP server or the password is incorrect.                       | Confirm the POP Login Password is set correctly or make sure your user name is not locked on the mail server.                                                      |
| POP3 SRV NOT CONNECT | The machine cannot connect to the POP server.                                                             | Make sure the settings for your account is configured on the mail server correctly.                                                                                |

## 1.8 Battery Error

| Display       | Cause                                                                                           | Solution                                                                                                                                |
|---------------|-------------------------------------------------------------------------------------------------|-----------------------------------------------------------------------------------------------------------------------------------------|
| LOW BATTERY   | The power of the battery of the Internet Fax unit is low.                                       | Power your machine on, then wait for a while for charging. If this Error Message is repeatedly displayed, the battery must be replaced. |
| BATTERY ERROR | The battery is not connected to the Internet Fax unit correctly or the battery is out of order. | Connect the battery to the Internet Fax unit correctly. If this error message is repeatedly displayed, replace the battery.             |

## 1.9 Others

| Display              | Cause                                                                                                                          | Solution                                     |
|----------------------|--------------------------------------------------------------------------------------------------------------------------------|----------------------------------------------|
| INTERNET FAX SENDING | This message is displayed by pressing any button on the Operation Panel while the machine is sending the E-mail.               | Wait until sending the E-mail is finished.   |
| PRINTING...          | This message is displayed by pressing any button on the Operation Panel while the machine is printing the received E-mail.     | Wait until printing the E-mail is finished.  |
| MIB ACCESSING        | This message is displayed by pressing any button on the Operation Panel while the machine is analyzing the MIB                 | Wait until analyzing the MIB is finished.    |
| FTP ACCESSING        | This message is displayed by pressing any button on the Operation Panel while the machine is transmitting the data in the FTP. | Wait until the FTP transmission is finished. |

## 1.10 Test Error

These error messages are displayed only in Test Mode.

| Display                 | Cause                                                            | Solution                                                                                                                          |
|-------------------------|------------------------------------------------------------------|-----------------------------------------------------------------------------------------------------------------------------------|
| COMMAND ERROR           | The command error occurs while performing the Network Test.      | Replace the Internet Fax unit.                                                                                                    |
| S-MEDIA NOT EXIST       | The Smart Media is not inserted while performing the Smart Test. | Insert the Smart Media in the Smart Media slot.                                                                                   |
| RAM 0B:NG               | The RAM has become defective.                                    | Replace the Internet Fax unit.                                                                                                    |
| RAM 1C:NG               |                                                                  |                                                                                                                                   |
| CHKSUM ERR:<br>PROGRAM  | The programming data has been damaged.                           | Perform firmware downloading to overwrite the data. If this Error Message is repeatedly displayed, replace the Internet Fax unit. |
| CHKSUM ERR:<br>FUNCTION | The function setting data has been damaged.                      |                                                                                                                                   |
| CHKSUM ERR:<br>LANGUAGE | The language data has been damaged.                              |                                                                                                                                   |
| CHKSUM ERR:<br>BOOT     | The boot programming data has been damaged.                      |                                                                                                                                   |

## 2. Error Codes Printed on Reports

When an Error Code is printed as a status indication on Transmission Reports, etc. related to Internet Fax transmission, refer to the following description for the applicable Error Code to determine the cause.

### 2.1 Error Codes for Receiving I-Fax

| Error Code | Cause                                                                         | How to Correct                                                                                                                                                                                                                                                                                                                       |
|------------|-------------------------------------------------------------------------------|--------------------------------------------------------------------------------------------------------------------------------------------------------------------------------------------------------------------------------------------------------------------------------------------------------------------------------------|
| 70         | Memory Overflow and "Error E-mail Forward Address" is assigned                | Contact your sender to resend the document by reducing the sent pages. Or confirm the E-mail data forwarded to the "Error E-mail Forward Address".                                                                                                                                                                                   |
| 71         | Memory Overflow                                                               | Contact your sender to resend the document by reducing the sent pages.                                                                                                                                                                                                                                                               |
| 72         | Attached File Error and "Error E-mail Forward Address" is assigned            | Confirm the settings of related Network data such as E-mail address, IP address or SMTP server address, etc. Or confirm the E-mail data forwarded to the "Error E-mail Forward Address".                                                                                                                                             |
| 73         | Attached File Error                                                           | Confirm the settings of related Network data such as E-mail address, IP address or SMTP server address, etc.                                                                                                                                                                                                                         |
| 74         | TIFF File Error                                                               | Contact your sender to resend the document with correct TIFF image files.                                                                                                                                                                                                                                                            |
| 75         | TIFF File Error and "Error E-mail Forward Address" is assigned                | Contact your sender to resend the document with correct TIFF image files. Or confirm the E-mail data forwarded to the "Error E-mail Forward Address".                                                                                                                                                                                |
| 76         | Offramp Gateway Security Error and "Error E-mail Forward Address" is assigned | Contact your sender to confirm the Offramp E-mail address (fax number) is correct because the machine cannot forward the offramp gateway document to the facsimile number not registered in the OT and ABB dials when the Gateway Security is set to ON. Or confirm the E-mail data forwarded to the "Error E-mail Forward Address". |

| Error Code | Cause                                                                                                    | How to Correct                                                                                                                                                                                                                                           |
|------------|----------------------------------------------------------------------------------------------------------|----------------------------------------------------------------------------------------------------------------------------------------------------------------------------------------------------------------------------------------------------------|
| 77         | Offramp Gateway Security Error                                                                           | Contact your sender to confirm the Offramp E-mail address (fax number) is correct because the machine cannot forward the offramp gateway document to the facsimile number not registered in the OT and ABB dials when the Gateway Security is set to ON. |
| 78         | Offramp Gateway Telephone Number and/or Sub address Error and "Error E-mail Forward Address" is assigned | Contact your sender to confirm the Offramp E-mail address (fax number) is correct. Or confirm the E-mail data forwarded to the "Error E-mail Forward Address".                                                                                           |
| 79         | Offramp Gateway Telephone Number and/or Sub address Error                                                | Contact your sender to confirm the Offramp E-mail address (fax number) is correct.                                                                                                                                                                       |

## 2.2 Error Codes for Transmitting I-Fax

| Error Code | Cause                                | How to Correct                                                                                                                                                                                                                                                                                          |
|------------|--------------------------------------|---------------------------------------------------------------------------------------------------------------------------------------------------------------------------------------------------------------------------------------------------------------------------------------------------------|
| 7A         | Memory Overflow                      | Reduce the scan resolution or the compression of scan method and resend. Or increase the limitation size set at the "MSG SIZE LIMIT" if it is not set to maximum.                                                                                                                                       |
| 7B         | Communication Error with SMTP server | Confirm the following: <ul style="list-style-type: none"> <li>- SMTP Server Address is correctly set.</li> <li>- LAN cable is correctly connected.</li> <li>- IP Address of this machine is correctly assigned.</li> <li>- E-mail Address of this machine is correctly set.</li> </ul> Then send again. |
| 7C         | Delivery Error                       | Resend the document or check the any error condition occurs in reception side. If MDN/DSN report was printed, check the report to refer the information.                                                                                                                                                |
| 7D         | Processing Error in Reception side   | Resend the document or check the any error condition occurs in reception side. If MDN/DSN report was printed, check the report to refer the information.                                                                                                                                                |



## **Chapter 6. UPDATING THE FIRMWARE**

1. Updating the Firmware in I-FAX PC Board
  - 1.1 Updating the Firmware using TOSHIBA Viewer
  - 1.2 Updating the firmware by FTP Download
2. Updating the Firmware in Network Interface Card
  - 2.1 Updating the Firmware using FTP Download
  - 2.2 UPdaitng the Firmware using Flash Update

# Chapter 6 Updating the Firmware

This chapter describes how to download the update firmware for the Internet Fax PC Board, and the Network Interface Card.

## 1. Updating the Firmware on I-FAX PC Board

There are two methods to update the firmware on I-FAX PC Board.

- Updating by TOSHIBA Viewer
- Updating by FTP Download

### 1.1 Updating the Firmware using TOSHIBA Viewer

You can use the TOSHIBA Viewer to download the firmware to the Internet Fax unit.

In order to update the firmware in the Internet Fax unit using the TOSHIBA Viewer, you must have the firmware files for the TOSHIBA Viewer.

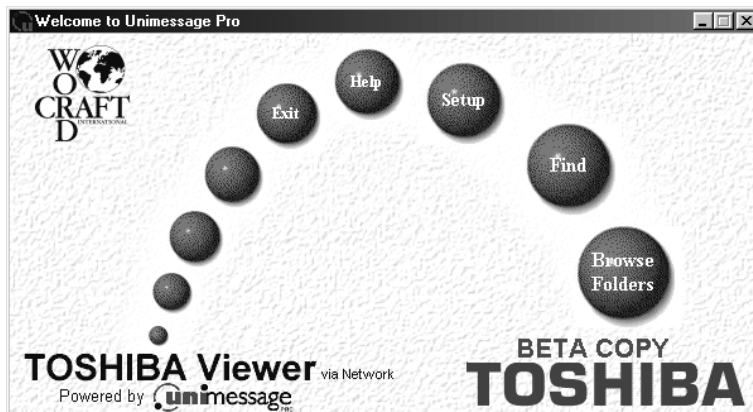
The following shows the firmware files required for the TOSHIBA Viewer:

- Internet Fax Kit program file
- Internet Fax Kit function file
- Internet Fax Kit language file
- Internet Fax Kit Boot file

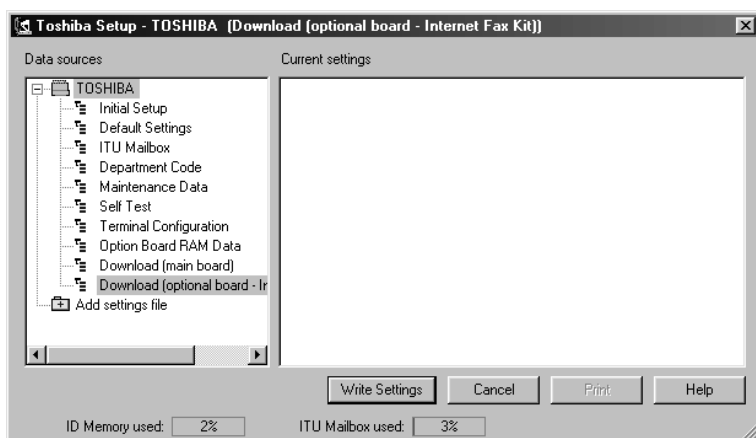
#### NOTE:

You can select the firmware files that you would like to update during the operation. Therefore, all firmware files are not necessarily required.

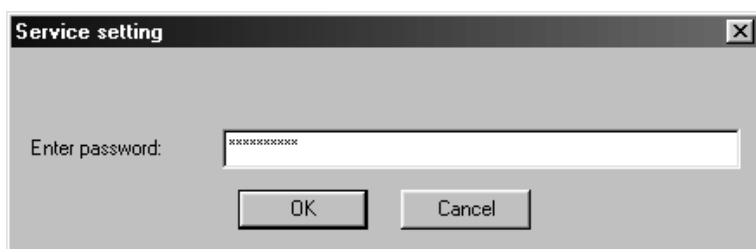
- (1) Run the TOSHIBA Viewer.
- (2) At the welcome screen of the TOSHIBA Viewer, click on [Setup]. The Toshiba Setup dialog appears.



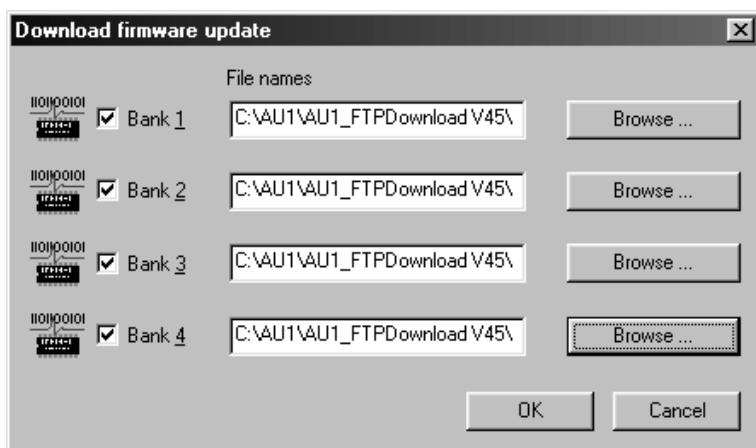
- (3) Select "Download (optional board - Internet Fax Kit)" from the Data sources list. The Service setting dialog appears.



- (4) Enter the password "TSBSERVICE" and click on [OK]. The Download firmware update dialog appears.



- (5) Check the items (Bank1, Bank2, Bank3, Bank4) that you would like to download and click [Browse...] to select a firmware file for each bank.



**CAUTION!**

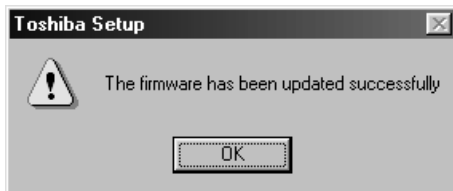
Each Bank has own file type which firmware file is downloaded. Be sure to select a right file for each bank. Following shows the file type for each bank.

- Bank1 ..... Check this for downloading the Internet Fax Kit program file
- Bank2 ..... Check this for downloading the Internet Fax Kit function file
- Bank3 ..... Check this for downloading the Internet Fax Kit language file
- Bank4 ..... Check this for downloading the Internet Fax Kit Boot file

- (6) Click on [OK] to start downloading. The Download firmware update dialog is continuously displayed during downloading.



- (7) After completing downloading successfully, the message "The firmware has been updated successfully" is displayed. Click on [OK].



## 1.2 Updating the Firmware by FTP Download

When you cannot update the firmware using either the JIG PC Board or TOSHIBA Viewer, you can download the firmware files by FTP command from the DOS prompt.

- (1) Run the DOS prompt
- (2) Enter "FTP [XXX.XXX.XXX.XXX]" at the prompt. (Enter the IP address of the facsimile instead of "[XXX.XXX.XXX.XXX].")
- (3) Enter the user name for the FTP login. (Default: public)
- (4) Enter the password for the FTP login. (Default: pass)
- (5) Enter "put [file name]". (Enter the firmware file that you want to download instead of "[file name].")
- (6) Enter "get rprt.txt". Please continuously enter "get rprt.txt" until you get "0Q" in "rprt.txt".
- (7) If you see the "0Q" in the "rprt.txt", the Internet Fax unit restarts immediately. ("0Q" means firmware downloading is succeeded.)
- (8) Enter "quit".
- (9) Please wait 1 minute.
- (10) When you download another Internet Fax Kit firmware file, please repeat the operation.

## 2. Updating the Firmware in Network Interface Card

You can update the firmware in the Network Interface Card from the personal computer using FTP Download utility or Flash Update utility according to your network environment.

- **FTP Download:** This utility is used to update the firmware in the Network Interface Card when the NIC is connected to the computer in the TCP/IP network environment.
- **Flash Update:** This utility is used to update the firmware in the Network Interface Card when the NIC is connected to the computer in the NetWare (IPX/SPX) network environment. The NetWare client software must be installed to Windows and the NetWare server is activated on the network. You must have supervisor rights on the NetWare server to run this program.

### 2.1 Updating the Firmware using FTP Download

Update the firmware in the Network Interface Card from the computer using FTP Download. Before updating, assign the IP address to the Network Interface Card if it has not been assigned.

#### **NOTE:**

While updating the NIC using the FTP Download, you should not access to the NIC HTTP, ping the unit, or use Telnet to attempt to change the IP address in any fashion since this could interfere with the FTP Download process.

- (1) Copy the update file to the local hard disk on your computer.
- (2) Click on "Start" and select "Programs".
- (3) Select the "FTP Download" in the "Programs" menu.
- (4) Click on "FTP Download" in the "FTP Download" folder.
- (5) The FTP Download screen appears.
- (6) Click on the "File" menu and click on "Download...".
- (7) The Select a file to download screen appears.
- (8) Select the folder that the update file is located at "Folders:" and select the update file at the "File name" list.
- (9) Click on [OK].
- (10) The IP Address screen appears.
- (11) Enter the IP address assigned to the Network Interface Card and click on [OK].
- (12) The Password screen appears.
- (13) Leave "Enter Unit Password" a blank and click on [OK].
- (14) The Download Status screen appears. Start downloading.
  - Do not turn off the power of the machine during downloading. It will cause to the fatal dissolution of the Network Interface Card.
- (15) The "Unit updated" message is displayed after it completes downloading.
- (16) Click on [OK].
- (17) Turn off the power of the machine and then turn it on to restart the Network Interface Card.

## **SUPPLEMENT:**

After restarting the machine, the NIC Status Sheet is automatically printed. The firmware version is listed on the sheet. Confirm the firmware version is changed to the new version.

## **2.2 Updating the Firmware using Flash Update**

Update the firmware in the Network Interface Card from the computer using Flash Update. Before updating, confirm that the NetWare client software is installed on your computer. If not, install it. The NetWare server must be activated on the network and you must have supervisor rights on the NetWare server to run this program.

- (1) Copy the update file to the local hard disk on your computer.
- (2) Click on "Start" and select "Programs".
- (3) Select the "Flash Update" in the "Programs" menu.
- (4) Click on "Flash Update" in the "Flash Update" folder.
- (5) The FTP Download screen appears.
- (6) The Select a file to download screen appears.
- (7) Select the folder that the update file is located at "Folders:" and select the update file at the "File name" list.
- (8) Click on [OK].
- (9) The Select Units To Update screen appears.
- (10) Select the machine from the list and click on [OK].
  - The machine is described with "MFP\_XXXXXX" ("XXXXXX" is the serial number of the NIC) or the printer server name that assigned to the NIC.
- (11) The Flash Update Utility screen appears. Start downloading.
  - Do not turn off the power of the machine during downloading. It will cause to the fatal dissolution of the Network Interface Card.
- (12) The "Unit updated" message is displayed after it completes downloading.
- (13) Click on [OK].
- (14) Turn off the power of the machine and then turn it on to restart the Network Interface Card.

## **SUPPLEMENT:**

After restarting the machine, the NIC Status Sheet is automatically printed. The firmware version is listed on the sheet. Confirm the firmware version is changed to the new version.



## **Chapter 7. APPENDIX**

1. List and Report
  - 1.1 E-mail Notification Reports Print Format
  - 1.2 List and Report Print Format
2. User Function Setting Initial Value List
  - 2.1 TCP/IP Configuration
  - 2.2 E-mail Account
  - 2.3 E-mail Properties
  - 2.4 Options

# Chapter 7 Appendix

## 1. List and Report

### 1.1 E-mail Notification Reports Print Format

#### 1.1.1 DSN Report

This is a notification message that the mail server has successfully or unsuccessfully delivered the E-mail message to a recipient.

#### Printing Procedure

Auto Print: if programmed

Printing will automatically start when the DSN message is received from the mail server.

#### NOTE:

To receive the DSN from the mail server, you must send an E-mail with the DSN request. Also, the mail server of the recipients should support the DSN.

#### Successful Report of DSN

```
From :System Administrator<postmaster@TOSHIBA.COM>
To :ifax<ifax@TOSHIBA.COM>
Cc :
Date :Fri, 2 Mar 2001 11:53:43 +0900
Subject :Delivered: Internet Fax MAIL
```

Your message

```
To: user01
Subject: Internet Fax MAIL
```

was delivered to the following recipient(s):

```
user01 on Fri, 2 Mar 2001 11:39:17 +0900
```

This message indicates that the E-mail was delivered successfully to the recipients.

## Unsuccessful Report of DSN

---

From :System Administrator<postmaster@TOSHIBA.COM>  
To :ifax<ifax@TOSHIBA.COM>  
Cc :  
Date :Fri, 2 Mar 2001 11:53:43 +0900  
Subject :Undelivered: Internet Fax MAIL

---

Your message

To: user01  
Subject: Internet Fax MAIL

did not reach the following recipient(s):

user01@toshiba.com on Fri, 2 Mar 2001 11:39:17 +0900  
The recipient name is not recognized  
The MTS-ID of the original message is : c=US;a=  
;p=Toshiba;I=MARSHAL0103020253GDXCQP26  
MSEXCH:IMS:Toshiba:TOSHIBA.COM:MARSHAL 0 (000C05A6) Unknown  
Recipient

This message indicates that the E-mail was not delivered successfully to the recipients.

## 1.1.2 MDN Report

This is a notification message that the recipient has successfully received the E-mail message.

### Printing Procedure

Auto Print: if programmed

Printing will automatically start when the MDN message is received from the recipient.

#### NOTE:

The MDN will not print if the E-mail message has not been successfully received by the recipient, or the recipient does not support the MDN. In this case, you can print the Alert Report that tells you have not received the MDN from the recipient.

---

```
From :<ifax@toshiba.com>
To :<user01@toshiba.com>
Cc :
Date :Fri, 2 Mar 2001 11:53:43 +0900
Subject :Disposition notification (MDN):Success
Message ID :<200103025113610.43@Ifxa.toshibatec.com>
```

---

This report relates to a message you sent with the following header fields:  
Message-id: <200103025113610.43@Ifxa.toshibatec.com>  
To: user01@toshiba.com  
Subject: Internet Fax MAIL

This is a Return Receipt for the mail that you sent to the above recipient.  
The message and attached file may have been printed or saved. This is no guarantee that the message has been read or understood.

---

```
Reporting-UA: Ifxa.toshibatec.com
Original-Recipient: rfc822;ifax@toshiba.com
Final-Recipient: rfc822:user01@toshiba.com
Original-message-ID: <200103025113610.43@Ifxa.toshibatec.com>
Disposition: automatic-action/MDN-sent-automatically;dispatched
Media-Accept-Features: (&(color=Binary)
 (image-file-structure=TIFF-limited)
 [| (image-coding=[MH,MR,MMR])
 (& (image-coding=JBIG)
 (image-coding-constraint=JBIG-T85)
 (JBIG-stripe-size=128)))
 [| (&(dpi=200)(dpi-xyratio=[200/100,1,200/400]))
 (&(dpi=300)(dpi-xyratio=1))
 (&(dpi=400)(dpi-xyratio=1))
 (paper-size=[A4,legal,letter])
 (MRC-mode=0)
 (ua-media=stationery)
```

### 1.2.3 Alert Report

This is a alert report that the recipient has not responded for the MDN.

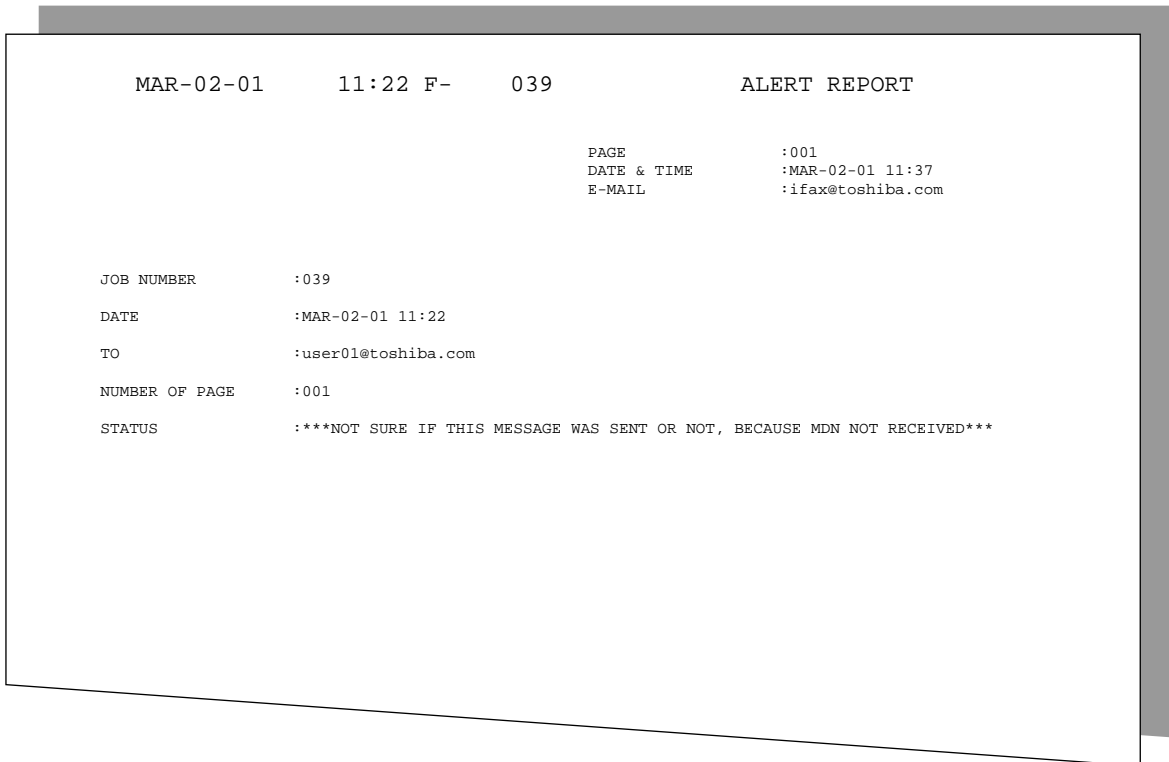
#### Printing Procedure

Auto Print: if programmed

Printing will automatically start when the time interval set has passed after the Internet Fax transmission has been operated.

#### NOTE:

This report indicates that you could not received the MDN from the recipient. This report may be printed although the E-mail message is successfully received by recipients in case the recipients do not support MDN.



## 1.2 List and Report Print Format

### 1.2.1 Transmission/Reception Journal (Communication Journal)

Transmission/Reception Journal shows the result of each communication for up to the past 150 transmission/receptions.

#### Printing Procedure

Auto Print : available if programmed

Printing will automatically start whenever 150 transmissions (or 150 receptions) are completed.

Manual Print:

- (1) Turn the Flip Panel to the "50-73" view and press the [JOURNAL] key.
- (2) Press [1] to select "1.TX & RX JOURNAL" when you want to print both Transmission Journal and Reception Journal.

Press [2] to select "2.TX JOURNAL" when you want to print a Transmission Journal.

Press [3] to select "3.RX JOURNAL" when you want to print a Reception Journal.

#### VERY IMPORTANT:

Up to date Activity Journals must be maintained by the user. In the event an electronic circuit board must be replaced in this unit, information pertaining to Scan, Print, and Drum counters must be entered into the replacement electric circuit board. This information is listed at the top of every journal.

The diagram shows a printout titled "TRANSMISSION JOURNAL" with several callouts pointing to specific fields:

- Machine Counter Information:** Points to the "PAGE" field.
- Your Station's ID Name:** Points to the "E-MAIL" field.
- E-mail Address of this facsimile unit:** Points to the "E-MAIL" field.
- Facsimile/Telephone Number of this facsimile unit, Line 1:** Points to the "TEL NUMBER1" field.
- Facsimile/Telephone Number of this facsimile unit, Line 2:** Points to the "TEL NUMBER2" field.
- Time of output of this list or report:** Points to the "TIME" field.
- List/Report Name:** Points to the "TRANSMISSION JOURNAL" title.

The printout content is as follows:

```

TRANSMISSION JOURNAL

PAGE :001
TIME :MAY-17-00 14:25
TEL NUMBER1 :12345678901234567890
TEL NUMBER2 :12345678901234567890
E-MAIL :ifax@toshiba.com
NAME :ABCDEFGHIJKLMNORSTUVWXYZ12345678901234
SCAN COUNT :1234 (000004D2)
PRINT COUNT :2345 (00000929)
DRUM COUNT :3456 (00000D80)

NBR. FILE NBR DATE TIME DURATION PAGE TO DEPT NBR ACCOUNT MODE STATUS

001 020 MAY-17 12:06 00/25 003 user02@toshiba.com 01 9999 ML 00 OK
002 020 MAY-17 14:01 59/59 009 ♦+1234567890 01 9999 ♦G3 502 P NG 20

```

Serial No.  
(lists the transmissions in the order they took place)

File No.  
(assigned to all communication jobs at the time of scanning)

Date and Time the communication started

NAM : ABCD FGH IJKL MNOP QRSTUVWXY Z12345678901234  
 SCAN COUNT : 1234 (000004D2)  
 PRINT COUNT : 2345 (00000929)  
 DRUN COUNT : 3456 (00000D80)

| NBR. | FILE NBR | DATE   | TIME  | DURATION | PAGE | TO                 | DEPT NBR | ACCOUNT | MODE      | STATUS |
|------|----------|--------|-------|----------|------|--------------------|----------|---------|-----------|--------|
| 001  | 020      | MAY-17 | 12:06 | 00/25    | 003  | user02@toshiba.com |          |         | ML 00     | OK     |
| 002  | 020      | MAY-17 | 14:01 | 59/59    | 009  | ◆+1234567890       | 01       | 9999    | ◆G3 502 P | NG 20  |

Length of each transaction:  
Minutes/Seconds

Number of Pages

Remote Station's Fax/Telephone Number or E-mail Address  
 ("◆" is alternate number of sub-address dial was used)

Department No.  
(indicates the department responsible for this transmission job; printed only when the Department Control option is ON)

Account No.  
(printed only when the Account Number option is ON and used)

Communication Mode

- G3 = G3
- EC = ECM
- EX = ECM with shortened protocol
- ML = E-mail
- HW, HR = RDC communication ("◆" is alternate number of sub-address dial was used)

|   | 1st (bps) | 2nd (Resolution) | 3rd (Mode) |
|---|-----------|------------------|------------|
| 0 | 2400      | 8x3.85           | MH         |
| 1 | 4800      | 8x7.7            | MR         |
| 2 | 7200      | 8x15.4           | MMR        |
| 3 | 9600      | -                | JBIG       |
| 4 | 12000     | 16x15.4          |            |
| 5 | 14400     |                  |            |
| 6 | V.34      |                  |            |
| 8 |           | 300dpi           |            |

Type of Communication

- P = Polling
- SR, R = Relay Communication
- SB = Mailbox Communication

Result  
 OK = success  
 NG = failure

Error Code

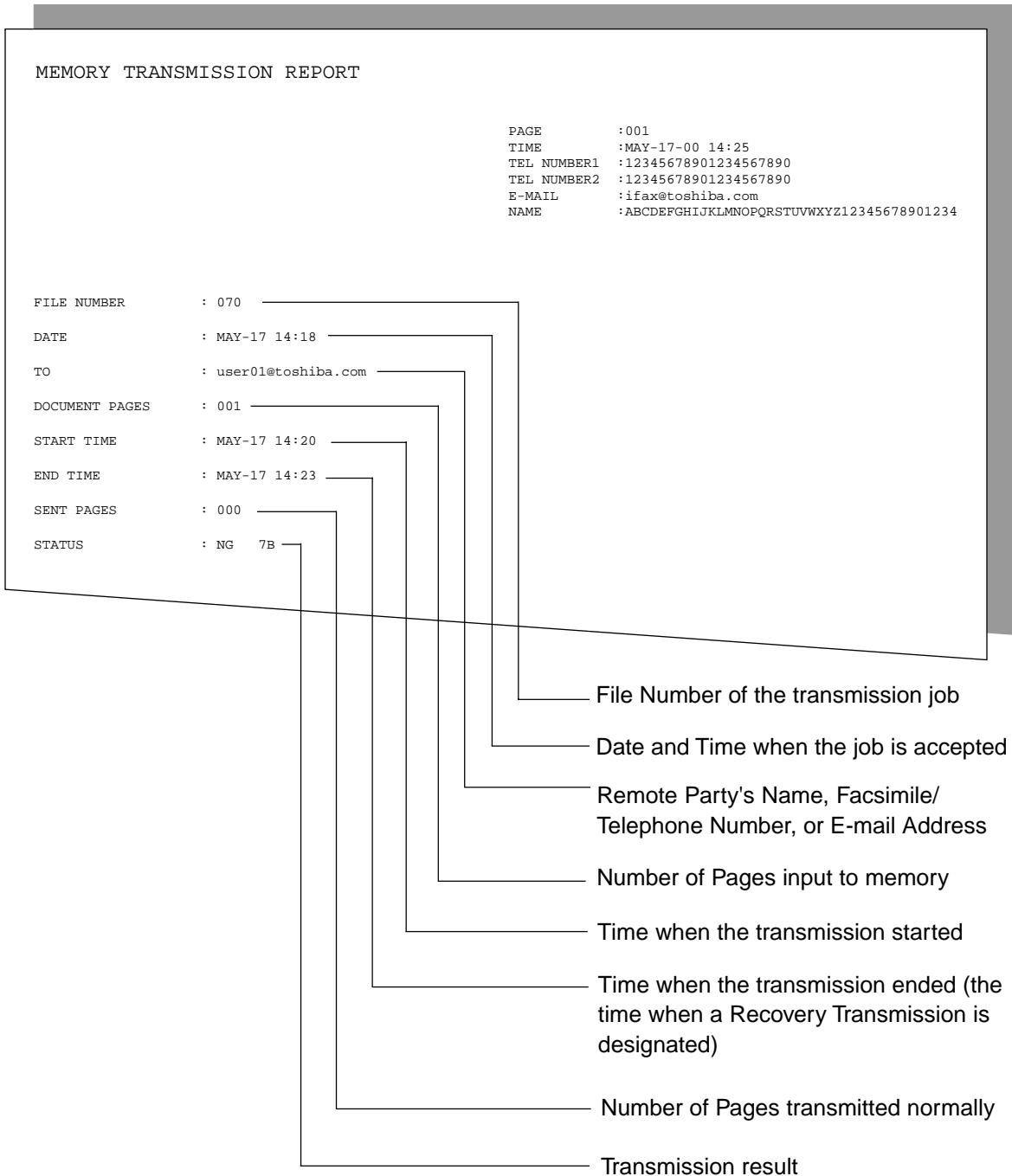
## 1.2.2 Memory Transmission Report

This is the result report printed after a Memory Transmission. (A job transmitted after the document is first scanned into memory.)

### Printing Procedure

Auto Print : if programmed

Printing will automatically start after a transmission is completed.



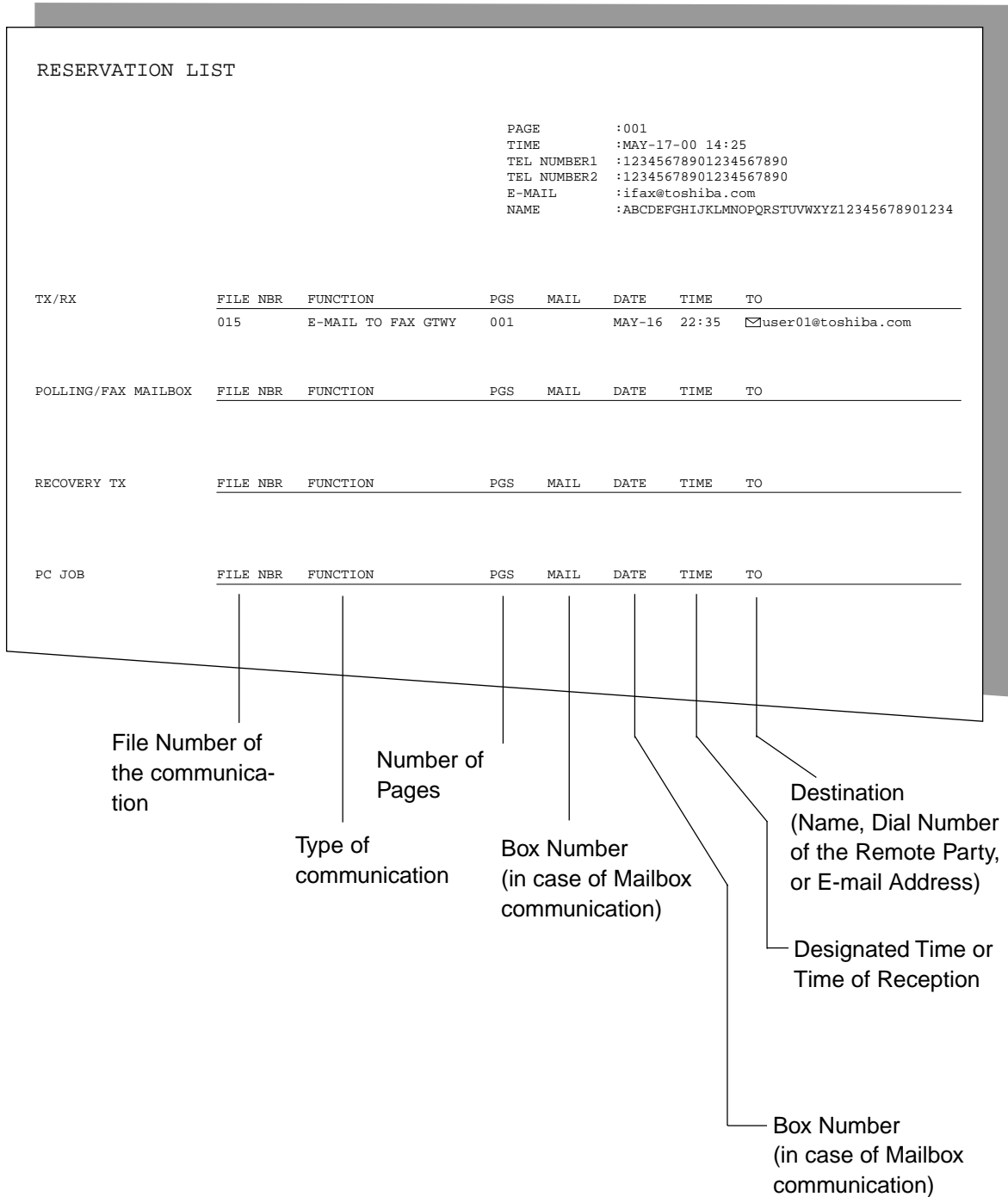
### 1.2.3 Reservation List

This is a listing of the communication jobs now reserved in memory.

#### Printing Procedure

Manual Print :

- (1) Turn the Flip Panel to the "50-73" view and press the [RESERVATION LIST] key.



## 1.2.4 Multi-Address Transmission Report

This is the result report printed after a Multi-address Transmission.

### Printing Procedure

Auto Print : if programmed

Printing will automatically start after all transmissions in the operation have been completed successfully or unsuccessfully.

```
MULTI TRANSMISSION REPORT

PAGE :001
TIME :MAY-17-00 14:25
TEL NUMBER1 :12345678901234567890
TEL NUMBER2 :12345678901234567890
E-MAIL :ifax@toshiba.com
NAME :ABCDEFGHIJKLMNQRSTUvwxyz12345678901234

FILE NUMBER : 005
DATE : MAY-17 14:18
DOCUMENT PAGES : 15
START TIME : MAY-17 10:56
END TIME : MAY-17 14:18 (RECOVERY TIME:MAY-17 14:18)

SUCCESSFUL
GROUP NUMBER
0001 ABCDEFGHIJKLMNOPQRST ABB. 001 002 003 004 005 006 007 008
 009 010
 OT 01 05
ONE TOUCH NUMBER
01 ✉user01@toshiba.com
E-MAIL
 ✉user02@toshiba.com

UNSUCCESSFUL
GROUP NUMBER
0001 AABBCDDDEEFFGGHHIIJJ OT 33 AAABBCDDDEEFFGG SENT PAGES
 01
```

Receiver where no error occurred  
SENT PAGES ... Number of pages sent normally

Receiver where the transmission was  
completed normally

## 1.2.5 Preset Dialing Number Lists

### 1.2.5.1 Alphabetical Sort List

Issues a listing of names programmed to Abbreviated Dial Numbers, One Touch Keys, and Group Numbers.

#### Printing Procedure

Manual Print :

- (1) Turn the Flip Panel to the "50-73" view and press the [TEL LIST PRINT] key.
- (2) Press [1] to select "1.BY NAME".

PHONEBOOK IN ALPHABETICAL ORDER

PAGE : 001  
TIME : MAY-17-00 14:25  
TEL NUMBER1 : 12345678901234567890  
TEL NUMBER2 : 12345678901234567890  
E-MAIL : ifax@toshiba.com  
NAME : ABCDEFGHIJKLMNOPQRSTUVWXYZ12345678901234

| NAME               | LOCATION | FAX NUMBER/E-MAIL ADDRESS                                                                                                                       |
|--------------------|----------|-------------------------------------------------------------------------------------------------------------------------------------------------|
| ABCDEFGHIJKLMNQRST | OT 01    | 1234567890123456789012345678901234567890<br>◆0987654321<br>SUB: 098765432109876543210<br>SEP: 998877665544<br>PWD: *****<br>✉user01@toshiba.com |
| BCDEFGHIJKLMNQRSTU | ABB. 001 | ✉user02@toshiba.com                                                                                                                             |

Names of Abbreviated Dial Number, One Touch Key or Group Number

Station Dial Number/E-mail Address  
✉ ..... E-mail Address  
◆ ..... Alternate Dial Number  
SUB, SEP, or PWD ..... Type of Sub-address

OT ..... One Touch Key Numbers  
ABB. .... Abbreviated Dial Numbers  
Group ... Group Numbers

### 1.2.5.2 Abbreviated Dial Number List

Issues a list of remote station dialing numbers assigned as Abbreviated Dial Numbers.

#### Printing Procedure

Manual Print :

- (1) Turn the Flip Panel to the "50-73" view and press the [TEL LIST PRINT] key.
- (2) Press [2] to select "2.ABB NUMBERS".

| ABBREVIATED TEL NUMBER LIST                                                                                                                                                              |                    |                                                                                                                                                                     |       |      |     |        |      |            |            |
|------------------------------------------------------------------------------------------------------------------------------------------------------------------------------------------|--------------------|---------------------------------------------------------------------------------------------------------------------------------------------------------------------|-------|------|-----|--------|------|------------|------------|
| PAGE :001<br>TIME :MAY-17-00 14:25<br>TEL NUMBER1 :12345678901234567890<br>TEL NUMBER2 :12345678901234567890<br>E-MAIL :ifax@toshiba.com<br>NAME :ABCDEFGHIJKLMNQRSTUvwxyz12345678901234 |                    |                                                                                                                                                                     |       |      |     |        |      |            |            |
| ABB.NBR                                                                                                                                                                                  | NAME               | TEL NUMBER/E-MAIL ADDRESS                                                                                                                                           | TIME  | MONI | BPS | REPORT | LINE | MIALMODE   |            |
| 001                                                                                                                                                                                      | ABCDEFGHIJKLMNQRST | 123456789012345678901234567890<br>1234567<br>◆0987654321<br>SUB:12345678901234567890<br>SEP:112233445566<br>PWD:*****<br>✉user01@toshiba.com<br>✉user02@toshiba.com | 23:45 | ON   | 144 | ON     | 1    |            |            |
| 109                                                                                                                                                                                      | GREENVILLE OFFICE  |                                                                                                                                                                     |       |      |     |        |      | 200x200 MH | 200x200 MH |

Abbreviated Dial Number

Station Name

Resolution

Compression

TEL NUMBER/E-MAIL ADDRESS

- ✉ ..... E-mail Address
- ◆ ..... Alternate Dial Number
- SUB, SEP, or PWD ..... Type of Sub-address

Attached Fax option Status (if any)

- Designated Time
- Line Monitoring
- Communication Speed Limit (x100)
- TX Report Issue/Non-issue Status

### 1.2.5.3 Group Number List

Issues a list of One Touch Key and Abbreviated Dial Numbers registered in Multi-address Groups or Multi-polling Groups.

#### Printing Procedure

Manual Print :

- (1) Turn the Flip Panel to the "50-73" view and press the [TEL LIST PRINT] key.
- (2) Press [3] to select "3.GROUP NUMBERS".

| GROUP NUMBER INFORMATION |                                              |                                                                                                                                                                                                                             |
|--------------------------|----------------------------------------------|-----------------------------------------------------------------------------------------------------------------------------------------------------------------------------------------------------------------------------|
|                          | PAGE :001                                    |                                                                                                                                                                                                                             |
|                          | TIME :MAY-17-00 14:25                        |                                                                                                                                                                                                                             |
|                          | TEL NUMBER1 :12345678901234567890            |                                                                                                                                                                                                                             |
|                          | TEL NUMBER2 :12345678901234567890            |                                                                                                                                                                                                                             |
|                          | E-MAIL :ifax@toshiba.com                     |                                                                                                                                                                                                                             |
|                          | NAME :ABCDEFGHIJKLMNQRSTUvwxyz12345678901234 |                                                                                                                                                                                                                             |
| GROUP NUMBER             | NAME                                         | OT/ABB. NUMBER                                                                                                                                                                                                              |
| 0001                     | ABCDEFGHIJKLMNQRST                           | OT 01 02 03 04 05 06 07 08 09 10 11 12 13 14 15<br>16 17 18 19 20<br>ABB. 001 002 003 004 005 006 007 008 009 010 011 012 013 014 015<br>016 017 018 019 020 021 022 023 024 025 026 027 028 029 030<br>031 032 033 034 999 |
| 1111                     | ABBCCDDDEEEEEE                               | ABB. 100 200 300 400 500                                                                                                                                                                                                    |
| 1999                     | ZZZZZ                                        | OT 31 32 33<br>ABB. 995 996 997 998 999                                                                                                                                                                                     |

Group Number

Group Name

One Touch Key Numbers and Abbreviated Dial Numbers belonging to the Group:

OT ..... One Touch Key Numbers  
ABB. .... Abbreviated Dial Numbers

### 1.2.5.4 One Touch Number List

Issues a list of dial numbers of the remote stations assigned to One Touch Dial Keys.

#### Printing Procedure

Manual Print :

- (1) Turn the Flip Panel to the "50-73" view and press the [TEL LIST PRINT] key.
- (2) Press [4] to select "4.ONE TOUCH NBRS".

ONE TOUCH NUMBER INFORMATION

PAGE : 001  
 TIME : MAY-17-00 14:25  
 TEL NUMBER1 : 12345678901234567890  
 TEL NUMBER2 : 12345678901234567890  
 E-MAIL : ifax@toshiba.com  
 NAME : ABCDEFGHIJKLMNOPQRSTUVWXYZ12345678901234

| OT NBR | NAME               | TEL NUMBER/E-MAIL ADDRESS                                                                                                                                           | TIME  | MONI | BPS | REPORT | LINE | MIALMODE                 |
|--------|--------------------|---------------------------------------------------------------------------------------------------------------------------------------------------------------------|-------|------|-----|--------|------|--------------------------|
| 01     | ABCDEFGHIJKLMNQRST | 123456789012345678901234567890<br>1234567<br>◆0987654321<br>SUB:12345678901234567890<br>SEP:112233445566<br>PWD:*****<br>☐user01@toshiba.com<br>☐user02@toshiba.com | 23:45 | ON   | 144 | ON     | 2    |                          |
| 09     | ABB.NBR            |                                                                                                                                                                     |       |      |     |        |      | 200x200 MH<br>200x200 MH |

One Touch Key Number

Station Name

Abbreviated Dial Number, Group Number, actual Dial Number, or E-mail Address

☐ ..... E-mail Address

◆ ..... Alternate Dial Number

SUB, SEP, or PWD ..... Type of Sub-address

Attached Fax option Status (if any)

Designated Time

Line Monitoring

Communication Speed Limit (x100)

TX Report Issue/Non-issue Status

Resolution

Compression

## 1.2.6 Function List

Issues a list to confirm the functions currently set in this facsimile unit.

### Printing Procedure

Manual Print :

- (1) Press the [Menu] key to display the main menu.
- (2) Press [2] to select "2.LITS".
- (3) Press [1] to select "1.FUNCTION".

### Function List (First Copy)

| FUNCTION LIST            |                                         |
|--------------------------|-----------------------------------------|
| PAGE                     | :001                                    |
| TIME                     | :MAY-17-00 14:25                        |
| TEL NUMBER1              | :12345678901234567890                   |
| TEL NUMBER2              | :12345678901234567890                   |
| E-MAIL                   | :ifax@toshiba.com                       |
| NAME                     | :ABCDEFGHIJKLMNQRSTUvwxyz12345678901234 |
| DIAL TYPE(LINE1) : MF    |                                         |
| DIAL TYPE(LINE2) : MF    |                                         |
| CALL NUMBER :            |                                         |
| KEYBOARD TYPE : QWERTY   |                                         |
| MEMORY SIZE : 8MB        |                                         |
| MACHINE SETTING          |                                         |
| RINGER VOLUME            | : 4                                     |
| ALARM VOLUME             | : 3                                     |
| KEY TOUCH VOLUME         | : 4                                     |
| MONITOR VOLUME           | : 4                                     |
| SUPER POWER SAVER        | : MANUAL                                |
| PRINTER POWER SAVER      | : ON                                    |
| START TIME               | : 00:00                                 |
| END TIME                 | : 00:00                                 |
| FAX SEPARATOR PAGE       | : OFF                                   |
| COPY SEPARATOR PAGE      | : OFF                                   |
| PC SEPARATOR PAGE        | : OFF                                   |
| SEPARATOR PAGE TRAY      | : AUTO                                  |
| ACCOUNT CODE             | : OFF                                   |
| PRINT DENSITY            | : 0                                     |
| DOCUMENT LENGTH          | : 1m                                    |
| LINE MONITOR             | : OFF                                   |
| RECEIVE INTERVAL         | : 3MIN                                  |
| ECM                      | : ON                                    |
| DOCUMENT MODE            | : STD                                   |
| CONTRAST                 | : NORMAL                                |
| COLLATED COPY            | : OFF                                   |
| LETTER HEAD PAPER        | : OFF                                   |
| REDIAL MODE INTERVAL     | : 1MIN                                  |
| REDIAL MODE COUNTER      | : 5                                     |
| AUTO RECEIVE MODE        | : AUTO                                  |
| RING DELAY               | : 1                                     |
| AUTO RECEIVE MODE(LINE2) | : TX/RX                                 |
| TX SETTINGS              |                                         |
| MEMORY TX                | : ON                                    |
| SECURITY TX              | : OFF                                   |
| COVER SHEET              | : OFF                                   |
| RECOVERY TX              | : OFF                                   |
| TTI                      | : INSIDE                                |
| SEND AFTER SCAN          | : OFF                                   |
| RX SETTINGS              |                                         |
| SECURE RX                | : OFF                                   |
| MEMORY RX                | : ON                                    |
| RX REDUCTION             | : ON                                    |
| DISCARD                  | : ON                                    |
| REV.ORDER PRINT          | : OFF                                   |
| PRIVILEGED RX            | : OFF                                   |
| RTI                      | : OFF                                   |
| RX MULTI COPY            | : 1                                     |
| REPORT & LIST            |                                         |
| JOURNAL                  |                                         |
| MANUAL                   | : TX & RX                               |
| AUTO                     | : ON                                    |
| FAX/POLL/RELAY REPORTS   |                                         |
| COMMUNICATION REPORT     | : ON ERROR                              |
| A5 SIZE PRINT            | : OFF                                   |
| MEMORY TX                | : ON ERROR (IMAGE)                      |
| A5 SIZE PRINT            | : OFF                                   |
| MULTI TX                 | : ON ERROR (IMAGE)                      |
| MULTI POLL               | : ON ERROR                              |
| RELAY ORIGINATOR         | : ON ERROR (IMAGE)                      |
| RELAY STATION            | : ON ERROR (IMAGE)                      |
| RELAY DESTINATION        | : ON ERROR (IMAGE)                      |
| RECEPTION LIST           |                                         |
| LOCAL MAILBOX            | : OFF                                   |
| REMOTE MAILBOX           | : OFF                                   |
| RELAY STATION            | : ON                                    |
| REMOTE SERVICE           |                                         |
| REMOTE ACCESS            | : OFF                                   |
| DOWNLOAD                 | : NO JOB                                |
| RDC PASSWORD             | :                                       |
| TOTAL PAGE               |                                         |
| SCAN                     | : 237                                   |
| PRINT                    | : 231                                   |

## Function List (Second Copy)

### FUNCTION LIST

PAGE :001  
TIME :MAY-17-00 14:25  
TEL NUMBER1 :12345678901234567890  
TEL NUMBER2 :12345678901234567890  
E-MAIL :ifax@toshiba.com  
NAME :ABCDEFGHIJKLMNQRSTUUVWXYZ12345678901234

NETWORK (TCP/IP)  
BOOTP/DHCP : OFF  
IP ADDRESS : 192.1.4.34  
SUBNET MASK : 255.255.0.0  
DEFAULT GATEWAY : 0.0.0.0  
HOST NAME : ifax.toshiba.com

NETWORK (E-MAIL)  
E-MAIL ADDRESS : ifax@toshiba.com  
ERR E-MAIL FW ADDR : admin@toshiba.com  
RECEIVE MODE : POP  
DELIVERY NOTIFICATION : NOT SUPPORTED (POP)  
POP SERVER ADDR : 192.1.5.121  
POP TIME : 10MINUTES  
POP LOGIN NAME : ifax  
POP PASSWORD : pass  
SMTP SERVER ADDR : 192.1.5.121

NETWORK (FTP)  
FTP SRV LOGIN NAM : public  
FTP SRV LOGIN PWD : pass

NETWORK (LAN FAX)  
LAN FAX SRV ADDR : 0.0.0.0

NETWORK (NOVELL SETTING)  
IPX/SPX PROTOCOL : ENABLE  
FRAME TYPE : AUTO

E-MAIL  
PRINT TEXT BODY : ON  
BODY PAGE LIMIT : 05  
SEND DISPOSITION : ON  
PRINT HEADER : ON  
PRINT E-MAIL ERR : ON  
PRINT DSN : ON  
PRINT DISPOSITION : ON  
REQUEST DSN : ON  
E-MAIL TO FAX GTWY : OFF  
GATEWAY PRINT : ON  
GATEWAY SECURITY : ON  
CONFIRM. TIMER : ON  
SET CONFIRM. TIME : 15MINUTES  
MSG SIZE LIMIT : 2.0MBYTE

FLASH ROM (OPTION)  
PROGRAM : 1AUWWTS1SPA01045  
: DEC-11-00  
LANGUAGE : 2AUWWTS1SPA01015  
: SEP-01-00

## 1.2.7 Menu List

Issues a list of menu items through which functions or options can be set. This list can be a useful guide during machine programming.

### Printing Procedure

Manual Print :

- (1) Press the [Menu] key to display the main menu.
- (2) Press [5] to select "5.MENU LIST".

### Function List (First Copy)

```
MENU LIST

PAGE :001
TIME :MAY-17-00 14:25
TEL NUMBER1 :12345678901234567890
TEL NUMBER2 :12345678901234567890
E-MAIL :ifax@toshiba.com
NAME :ABCDEFGHIJKLMNQRSTUvwxyz12345678901234

1.COMM. OPTIONS
 1.PAGE NUMBER
 2.LINE MONITOR
 3.TURNAROUND POLL
 4.ECM
 5.SECURITY TX
2.LISTS
 1.FUNCTION
 2.DEPARTMENT
 3.ITU MAILBOX
3.INITIAL SETUP
 1.LANGUAGE
 2.DATE & TIME
 3.TERMINAL ID
 4.DIAL TYPE
 5.NETWORK
 01.TCP/IP
 01.DONE
 02.BOOTP/DHCP
 03.IP ADDRESS
 04.SUBNET MASK
 05.DEFAULT GATEWAY
 06.HOST NAME
 02.E-MAIL
 01.E-MAIL ADDRESS
 02.ERR EMAIL FW ADDR
 03.RECEIVE MODE
 04.POP SERVER ADDR
 05.POP TIME
 06.POP LOGIN NAME
 07.POP PASSWORD
 08.SMTP SERVER ADDR
 03.FTP
 01.FTP SRV LOGIN NAM
 02.FTP SRV LOGIN PWD
 04.LAN FAX
 01.LAN FAX SRV ADDR
 05.NETWORK (NOVELL)
 01.DONE
 02.IPX/SPX PROTOCOL
 03.FRAME TYPE

4.DEFAULT SETTING
 1.MACHINE SETTINGS
 01.SPEAKER VOLUME
 01.RINGER VOLUME
 02.ALARM VOLUME
 03.KEY TOUCH VOLUME
 04.MONITOR VOLUME
 02.POWER SAVER
 03.SEPARATOR PAGE
 04.DEPARTMENT CODE
 05.ACCOUNT CODE
 06.PRINTER DENSITY
 07.DOCUMENT LENGTH
 08.LINE MONITOR
 09.RECEIVE INTERVAL
 10.ECM
 11.DOCUMENT MODE
 12.COLLATE COPY
 13.LETTER HEAD PAPER
 14.REDIAL MODE
 01.INTERVAL
 02.COUNTER
 15.AUTO RECEIVE MODE
 16.LINE-2 MODE
 2.TX SETTINGS
 01.MEMORY TX
 02.SECURITY TX
 03.COVER SHEET
 04.RECOVERY TX
 05.TTI
 06.SEND AFTER SCAN
 3.RX SETTINGS
 01.SECURE RX
 02.MEMORY RX
 03.RX REDUCTION
 04.DISCARD
 05.REV.ORDER PRINT
 06.PRIVILEGED RX
 07.RTI
 08.RX MULTI COPY
```

## Function List (Second Copy)

### MENU LIST

PAGE :001  
TIME :MAY-17-00 14:25  
TEL NUMBER1 :12345678901234567890  
TEL NUMBER2 :12345678901234567890  
E-MAIL :ifax@toshiba.com  
NAME :ABCDEFGHIJKLMNPOQRSTUVWXYZ12345678901234

- 4.REPORTS & LIST
  - 01.JOURNAL
  - 02.COMM. REPORT
    - 01.TX REPORT
    - 02.MEMORY-TX REPORT
    - 03.MULTI-ADD REPORT
    - 04.MULTIPOLL REPORT
    - 05.RELAY ORG.REP
    - 06.RELAY STN.REP
    - 07.SET RELAY END REP
  - 03.RECEPTION LIST
    - 01.LOCAL MAILBOX
    - 02.REMOTE MAILBOX
    - 03.RELAY

- 5.REMOTE SERVICE
  - 01.REMOTE ACCESS
  - 02.DOWNLOAD
  - 03.RDC PASSWORD
  - 04.SUPPLY ORDER

- 6.E-MAIL
  - 01.PRINT TEXT BODY
  - 02.BODY PAGE LIMIT
  - 03.SEND DISPOSITION
  - 04.PRINT HEADER
  - 05.PRINT E-MAIL ERR
  - 06.PRINT DSN
  - 07.PRINT DISPOSITION
  - 08.REQUEST DSN
  - 09.EMAIL TO FAX GTWY
  - 10.GATEWAY PRINT
  - 11.GATEWAY SECURITY
  - 12.CONFIRM. TIMER
  - 13.SET CONFIRM. TIME
  - 14.MSG SIZE LIMIT

5.MENU LIST

- 9.TEST MODE
  - 1.AUTO TEST
  - 2.INDIVIDUAL TEST
    - 01.ADF TEST
    - 02.KEY TEST
    - 03.LED TEST
    - 04.LCD TEST
    - 05.SPEAKER TEST
    - 06.SWITCH TEST
    - 07.TEST PRINT
  - 3.TEST RESULT LIST

## 1.2.8 Power Failure List

This facsimile has a battery to back up the document memory contents. However, when the power is turned off for a lengthy period (due to a power failure, etc.), the communication data stored in memory will be cleared. A list of the File Numbers of those cleared communications will be printed.

### Printing Procedure

Auto Print :

This list is automatically printed after recovery from a power failure event.

POWER FAILURE LIST

PAGE :001  
 TIME :MAY-17-00 14:25  
 TEL NUMBER1 :12345678901234567890  
 TEL NUMBER2 :12345678901234567890  
 E-MAIL :ifax@toshiba.com  
 NAME :ABCDEFGHIJKLMNQRSTUWXYZ12345678901234

| <u>TX/RX</u> | <u>FILE NBR</u> | <u>FUNCTION</u> |  |  |  |  |
|--------------|-----------------|-----------------|--|--|--|--|
|              | 001             | MULTI TX        |  |  |  |  |
|              | 005             | POLLING RX      |  |  |  |  |
|              | 006             | PRG. CONT POLL  |  |  |  |  |
|              | 010             | MULTI POLLING   |  |  |  |  |

| <u>POLLING/FAX M-BOX/MAIL BOX</u> | <u>FILE NBR</u> | <u>FUNCTION</u>  | <u>MAIL</u>          | <u>FROM</u>    | <u>DATE</u> | <u>TIME</u> |
|-----------------------------------|-----------------|------------------|----------------------|----------------|-------------|-------------|
|                                   | 101             | POLLING          |                      | LOCAL          | MAY-16      | 11:23       |
|                                   | 106             | CONFIDENTIAL BOX | *1234567890#12345678 | 99999999999999 | MAY-17      | 07:55       |
|                                   | 107             | BULLETIN BOARD   | #####123#999*        | LOCAL          | MAY-17      | 07:55       |

| <u>MEMORY RECEPTION</u> | <u>FILE NBR</u> | <u>FUNCTION</u> | <u>MAIL</u> | <u>FROM/TO</u>    | <u>DATE</u> | <u>TIME</u> |
|-------------------------|-----------------|-----------------|-------------|-------------------|-------------|-------------|
|                         | 222             | EMAIL           |             | ✉ifax@toshiba.com | MAY-16      | 21:37       |

| <u>RECOVERY TX</u> | <u>FILE NBR</u> | <u>FUNCTION</u> |
|--------------------|-----------------|-----------------|
|                    | 333             | EMAIL           |

File Number of the communication

Type of communication

Box Number (in case of Mailbox communication)

Station where the communication or the Mailbox is input

Date and Time of Input

## 2. User Function Setting Initial Value List

### 2.1 TCP/IP Configuration

|                 |               |
|-----------------|---------------|
| BootP/DHCP      | :ON           |
| IP Address      | :Not assigned |
| Subnet mask     | :Not assigned |
| Default Gateway | :Not assigned |
| Host Name       | :Not assigned |

### 2.2 E-mail Account

|                              |               |
|------------------------------|---------------|
| E-mail Address               | :Not assigned |
| Error E-mail Forward Address | :Not assigned |
| Receive Mode                 | :POP          |
| POP Server Address           | :Not assigned |
| POP Time                     | :10MINS       |
| POP Login Name               | :public       |
| POP Password                 | :pass         |
| SMTP Server Address          | :Not assigned |

### 2.3 E-mail Properties

|                       |           |
|-----------------------|-----------|
| Print Text Body       | :ON       |
| Body Page Limit       | :5        |
| Send Disposition      | :OFF      |
| Print Header          | :ON       |
| Print E-mail Error    | :ON       |
| Print DSN             | :OFF      |
| Print Disposition     | :ON       |
| Request DSN           | :ON       |
| E-mail to FAX Gateway | :OFF      |
| Gateway Print         | :ON       |
| Gateway Security      | :ON       |
| Confirmation Timer    | :15MINS   |
| MSG Size Limit        | :2.0MBYTE |

## 2.4 Options

|                           |               |
|---------------------------|---------------|
| FTP Server Login Name     | :public       |
| FTP Server Login Password | :pass         |
| LAN FAX                   | :Not assigned |
| IPX/SPX Protocol          | : ON          |
| Frame Type                | :AUTO         |

**TOSHIBA**

**TOSHIBA TEC CORPORATION**

1-1, KANDA NISHIKI-CHO, CHIYODA-KU, TOKYO, 101-8842 JAPAN