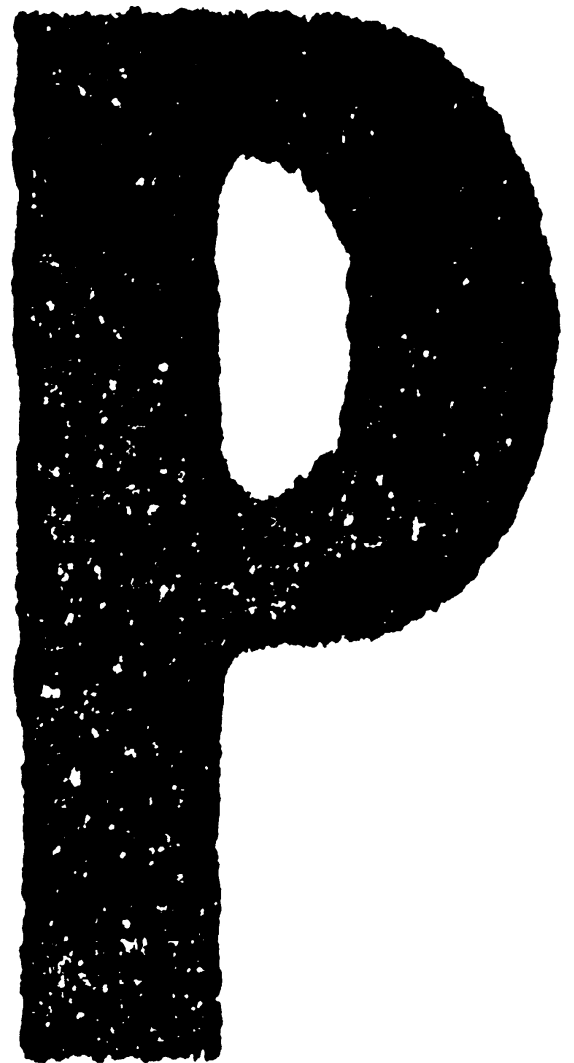


TOSHIBA

SERVICE PARTS LIST

SINGLE PASS FEEDER

MR-2014



Copyright 2002

TOSHIBA TEC CORPORATION

TOSHIBA

SERVICE PARTS LIST

SINGLE PASS FEEDER

MR-2014

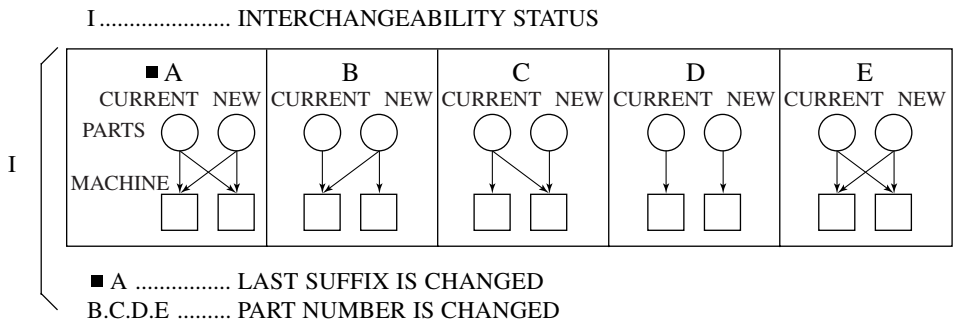
EXPLANATION OF SERVICE-PARTS LIST

1. HOW TO READ THE PARTS LIST

- (1) Number of pieces
The number of pieces in the list denotes total pieces used per unit. But the numbers in the list for PACKING MATERIAL and ACCESSORY denote total pieces used per machine.
- (2) One pack of screws in the list includes 50 pieces.
- (3) ABBREVIATED CODES

QTY/PAC	QTY one piece PAC one pack 1/P one piece packed in polyethylene bag 1/S one piece packed in special pack 1/C one piece packed in carton box 1/PP one piece packed in paper and polyethylene bag 1/KP one piece packed in polyethylene bag with cardboard 1/D one piece packed in polyethylene-cushion bag 1/SB one piece packed in shielding bag N/A not available
---------	---

P	P PURPOSE A ADD B DELETE C CHANGE D QTY, CHANGE E MISENTRY F OMISSION
---	---



2. HOW TO PLACE ORDER FOR PARTS

- (1) The parts handled as service parts are only those with their "QTY/PACK" column listed with a quantity other than "N/A***" or "SUPPLY".
Those parts with "N/A***" are listed only for the purpose of showing the mechanical construction, those listed with "SUPPLY" are handled only as a sales item, and therefore both types of parts are not supplied as service parts.
- (2) Orders for any parts which form a component of a semi-assembled unit are not acceptable.
Note: All the screws and nuts used are ISO standard.

3. REGION

NAD	115V/60Hz, UL & CSA
TWD	110V/60Hz, TAIWAN
SAD	127V/60Hz, SAUDI ARABIA
ASD	220V 50/60Hz, ASIA, etc.
AUD	240V/50Hz, AUSTRALIA
MJD	230-240V 50/60Hz, EUROPE
UKD	230-240V 50/60Hz, UNITED KINGDOM

NOTICE EXPLICATIVE DE LA LISTE DES PIECES DE RECHANGE

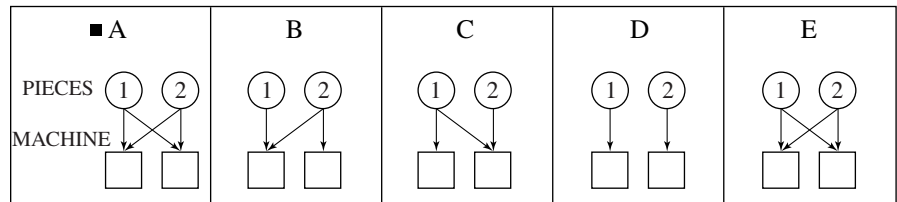
1. COMMENT UTILISER LA LISTE DES PIECES DE RECHANGE

- (1) Nombre de pièces
Le nombre de pièces indiqué sur la liste est le nombre total de pièces utilisées pour chaque unité.
Toutefois, le nombre indiqué sur la liste EMBALLAGE ACCESSOIRES est le nombre total de pièces utilisées pour chaque machine.
- (2) Un paquet de vis indiqué sur la liste contient 50 vis.
- (3) ABREVIATIONS

QTY	une pièce		
PAC	un paquet		
Q'TY/PAC	{	1/P	une pièce emballée dans un sac en polyéthylène
		1/S	une pièce emballée dans un sac spécial
		1/C	une pièce emballée dans une boîte en carton
		1/PP	une pièce emballée dans un sac en papier et en polyéthylène
		1/KP	une pièce emballée dans un sac en polyéthylène avec carton
		1/D	une pièce emballée dans un sac rembourré en polyéthylène
1/SB	une pièce emballée dans		
N/A***	non disponible		

P	BUT
{	A AJOUTER
	B SUPPRIMER
	C MODIFIER
	D CHANGEMENT DE QUANTITE
	E INSCRIPTION ERRONEE
	F OMISSION

I INTERCHANGEABILITE



- ① ACTUELLE ② NOUVELLE
- A LE DERNIER SUFFIXE EST CHANGE
- B.C.D.E LE NOMBRE DE PIECES EST CHANGE

2. COMMENT COMMANDER LES PIECES

- (1) Les pièces de rechange sont uniquement celles qui sont mentionnées dans la colonne "Q'TY/PACK" avec une quantité autre que "N/A***" ou "SUPPLY".
Les pièces dans la colonne "N/A***" sont mentionnées uniquement dans le but d'indiquer la construction mécanique. Les pièces dans la colonne "SUPPLY" sont destinées uniquement à la vente. Par conséquent, ces deux types de pièces ne sont pas fournies en tant que pièces de rechange.
- (2) Les commandes de toute pièce formant un élément ou une unité semi-assemblée ne seront pas acceptées.
Nota: Toutes les vis et tours le écrous seront conformes au code ISO.

3. PAYS

NAD	115V/60Hz, UL & CSA
TWD	110V/60Hz, TAIWAN
SAD	127V/60Hz, ARABIE SAOUDITE
ASD	220V
		50/60Hz, ASIE, etc.
AUD	240V/50Hz, AUSTRALIE
MJD	230-240V
		50/60Hz, EUROPE
UKD	230-240V
		50/60Hz, ROYAUME-UNI

ERKLÄRUNG DES ERSATZTEIL-KATALOGES

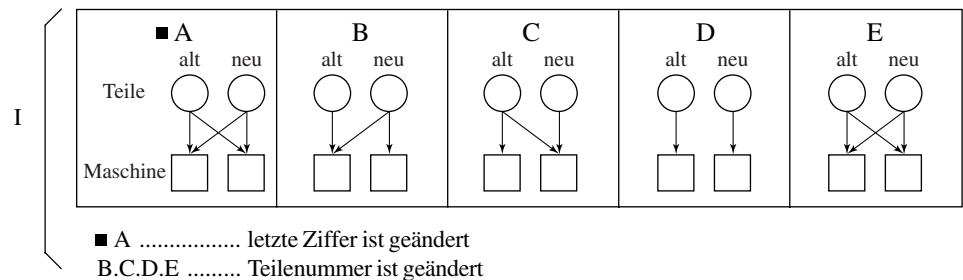
1. WIE LIEST MAN DIE TEILELISTE?

- (1) Die Teileanzahl
Die Anzahl der Teile in der Liste, drücken die gesamten Teile pro Verpackungseinheit aus. Aber die Zahl in der Liste "Packing" (Verpackung) und "Accessory" (Zubehör) beschreibt die gesamte Teileanzahl pro Maschine.
- (2) Eine Verpackungseinheit SCHRAUBEN enthält 50 Stück.
- (3) Abkürzungscode

QTY/PAC	QTY	Stück
	PAC	Packung
	1/P	ein Stück in einem Plastikbeutel
	1/S	ein Stück in einer Spezialverpackung
	1/C	ein Stück in einem Karton
	1/PP	ein Stück in Papier und einem Plastikbeutel
	1/KP	ein Stück in einem Plastikbeutel mit Pappdeckel
	1/D	ein Stück in einem gepolsterten Plastikbeutel
N/A	nicht lieferbar	
1/SB	ein Stück in einer Schutzhülle	

P	P	Zweck
	A	Zusätzlich
	B	Entfernen
	C	Ändern
	D	Menge geändert
	E	Fehlangabe
	F	Weglassen

I Austauschbar untereinander



2. WIE WERDEN ERSATZTEILE BESTELLT?

- (1) Die Ersatzteile für den Service haben in der Spalte "QTY/PACK" eine Nummer.
Die Teile mit der Angabe "N/A***" sind nur aufgeführt, um die technische Konstruktion zu zeigen und sind einzeln nicht lieferbar.
Die Bezeichnung "SUPPLY" weist darauf hin, daß dieses Teil als Zubehör gehandelt wird und beim Verkauf bestellt werden muß.
- (2) Bestellungen für Einzelteile, die einer Baueinheit angehören können nicht akzeptiert werden.
Hinweis: Alle Schrauben und Muttern werden nach dem ISO-Standard hergestellt.

3. REGION

NAD	115V/60Hz, UL & CSA
TWD	110V/60Hz, TAIWAN
SAD	127V/60Hz, SAUDI-ARABIEN
ASD	220V 50/60Hz, ASIEN, usw.
AUD	240V/50Hz, AUSTRALIEN
MJD	230-240V 50/60Hz, EUROPA
UKD	230-240V 50/60Hz, GROSSBRITANNIEN

SPIEGAZIONE DELLA LISTA DEI PEZZI DI RICAMBIO

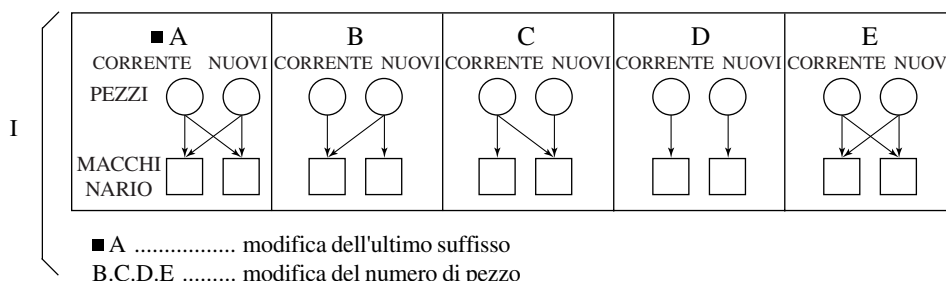
1. COME LEGGERE LA LISTA DEI PEZZI DI RICAMBIO

- (1) Numero dei pezzi
Il numero dei pezzi indica il totale dei pezzi per elemento. I numeri nella lista del materiale d'imballaggio e accessori indicano il totale dei pezzi per macchina.
- (2) Nella lista, un pacco di viti contiene 50 viti.
- (3) ABBREVIAZIONI

QTY/PAC	{	QTY	un pezzo
		PAC	un pacco
		1/P	un pezzo imballato in sacco di polietilene
		1/S	un pezzo imballato in pacco speciale
		1/C	un pezzo imballato in scatola di cartone
		1/PP	un pezzo imballato in sacco di polietilene e carta
		1/KP	un pezzo imballato in sacco di polietilene con cartone
		1/D	un pezzo imballato in sacco morbido di polietilene
	1/SB	un pezzo imballato in sacco di protezione	
	N/A	non disponibile	

P	{	P	scopo
		A	aggiunta
		B	annullamento
		C	modifica
		D	modifica QTY
		E	ingresso errato
		F	omissione

I stato di intercambiabilità



2. ORDINAZIONE DEI PEZZI

- (1) I pezzi usati come pezzi di ricambio sono elencati nella colonna "QTY/PACK" con una quantità differente da "N/A****" o "SUPPLY".
I pezzi con "N/A****" sono elencati solamente per mostrare la costruzione meccanica e quelli con "SUPPLY" sono elencati solamente come articoli di vendita: ciò significa che questi due tipi di pezzi non sono forniti come pezzi di ricambio.
- (2) L'ordinazione dei pezzi non viene accettata quando questi pezzi formano un componente di un messo elemento.
Nota: Tuttle le viti e i dadi sono standard ISO.

3. NAZIONE

NAD	115V/60Hz, UL & CSA
TWD	110V/60Hz, TAIWAN
SAD	127V/60Hz, ARABIA SAUDITA
ASD	220V
	50/60Hz, ASIA, ecc.
AUD	240V/50Hz, AUSTRALIA
MJD	230-240V
	50/60Hz, EUROPA
UKD	230-240V
	50/60Hz, GRAN BRETAGNA

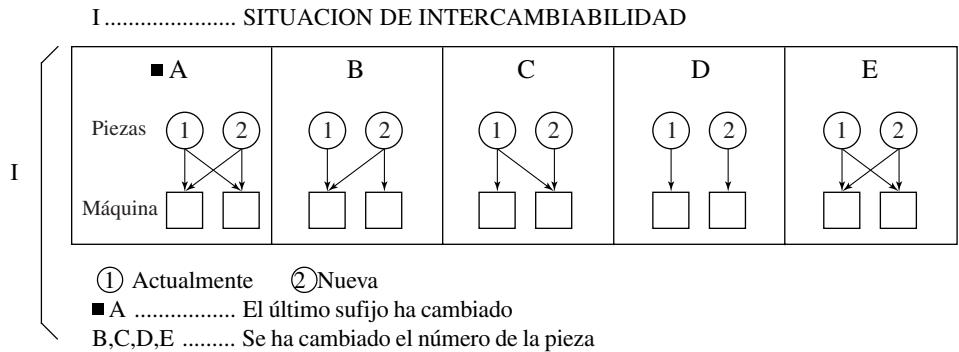
EXPLICACION DE LA LISTA DE PIEZAS DE SERVICIO

1. Cómo se lee la lista de piezas

- (1) El número de piezas
El número de piezas en la lista especifica las piezas totales usada pou unidad, mientras que el número en la lista para METERIAL DE EMBALAJE y ACCESORIOS especifica las piezas totales usadas por máquina.
- (2) En el paquete de tornillos se incluyen 50 unidades.
- (3) Códigos abreviados

QTY/PAC	{	QTY	una pieza
		PAC	una paquete
		1/P	una pieza empaquetada en la bolsa de politileno
		1/S	una pieza empaquetada en paquete especial
		1/C	una pieza empaquetada en caja de cartón
		1/PP	una pieza empaquetada en papel y bolsa de politileno
		1/KP	una pieza empaquetada en bolsa de politileno con cartón
		1/D	una pieza empaquetada en bolsa almohadillada de politileno
		1/SB	una pieza empaquetada en una
N/A	bolsa protegida		

P	{	P	PROPOSITO
		A	AÑADIR
		B	BORRAR
		C	CAMBIO
		D	CANTIDAD, CAMBIO
		E	ENTRADA ERRONEA
		F	OMISION



2. Cómo realizar un pedido de piezas

- (1) Las piezas consideradas como piezas de servicio son sólo aquellas designadas con Q'TY/PACK y no las designadas con N/A ... o SUPPLY.
Aquellas piezas con N/A ... se ponen en lista sólo con el propósito de mostrar la construcción mecánlca. Aquéllas piezas designadas bajo SUPPLY se consideran sólo como un artículo para ventas y por lo tanto ambos tipos de piezas no se consideran como piezas de servicio.
- (2) Los pedidos para cualquier pieza que forme un componente de la unidad semiensamblada no será aceptados.
NOTA: todos los tornillos y tuercas son del estandar ISO.

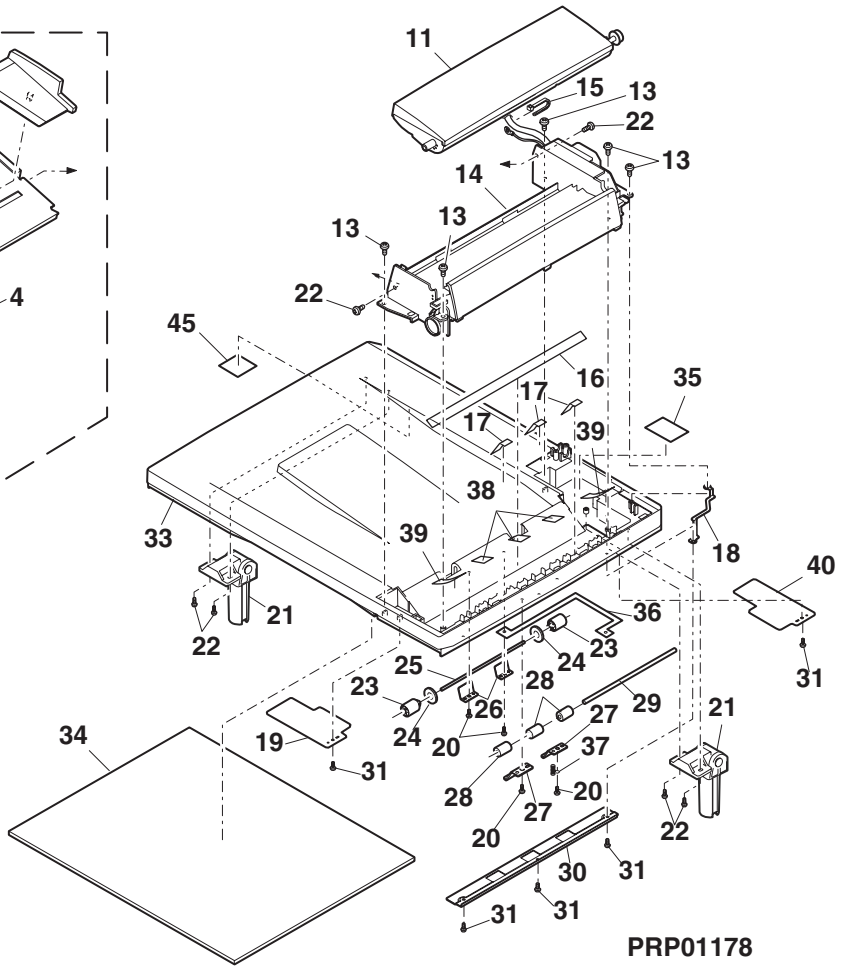
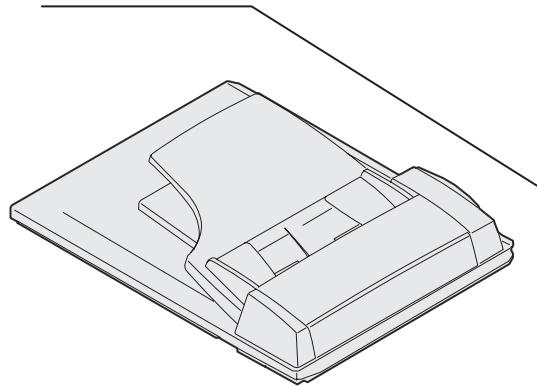
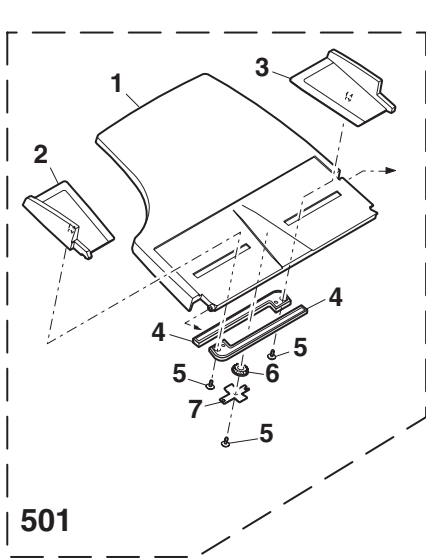
3. PAISES

NAD	115V/60Hz, UL & CSA
TWD	110V/60Hz, TAIWAN
SAD	127V/60Hz, SAUDI ARABIA
ASD	220V
	50/60Hz, ASIA, etc.
AUD	240V/50Hz, AUSTRALIA
MJD	230-240V
	50/60Hz, EUROPA
UKD	230-240V
	50/60Hz, GRAN BRETAÑA

CONTENTS

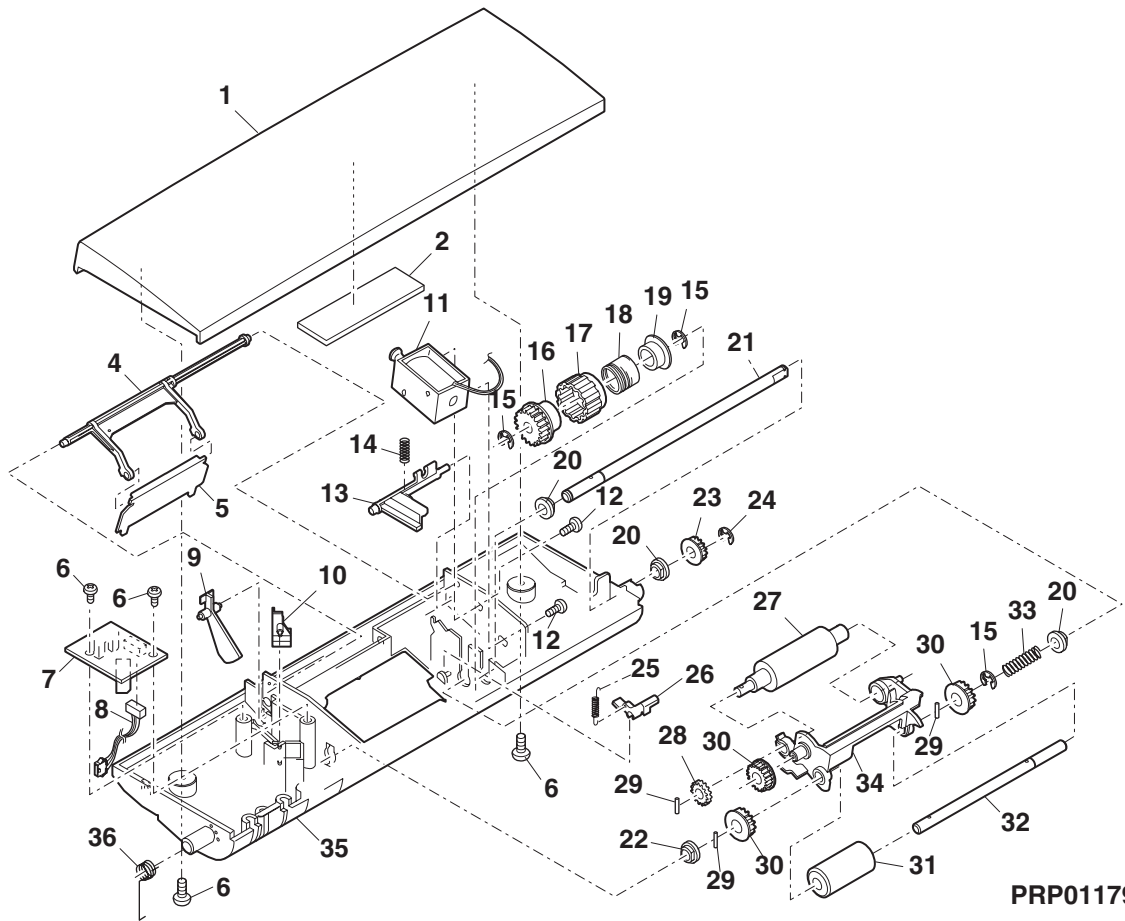
1. TRAY
2. PAPER PICKUP BLOCK
3. PAPER FEED BLOCK
4. PACKING

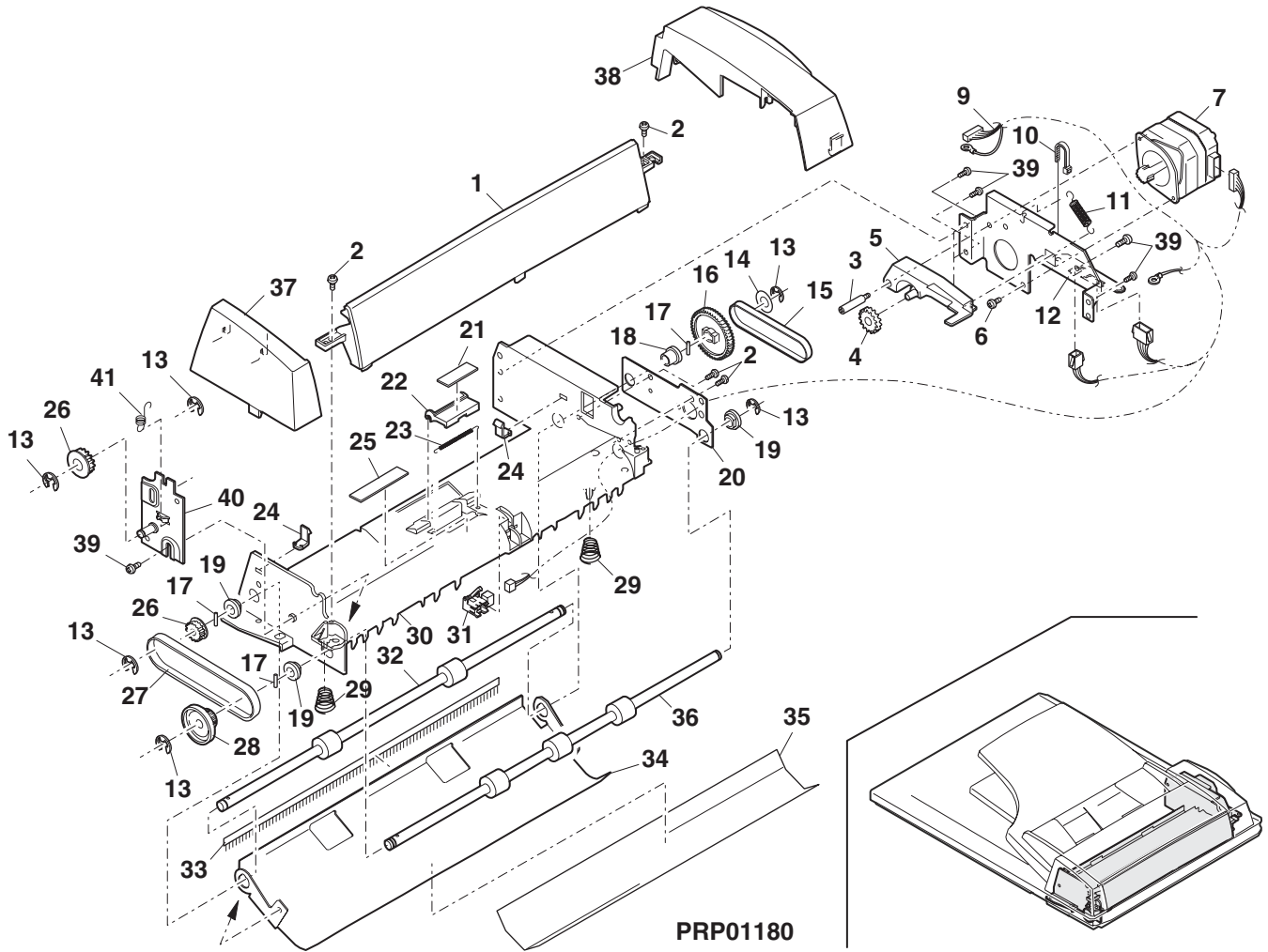
PARTS NUMBER INDEX

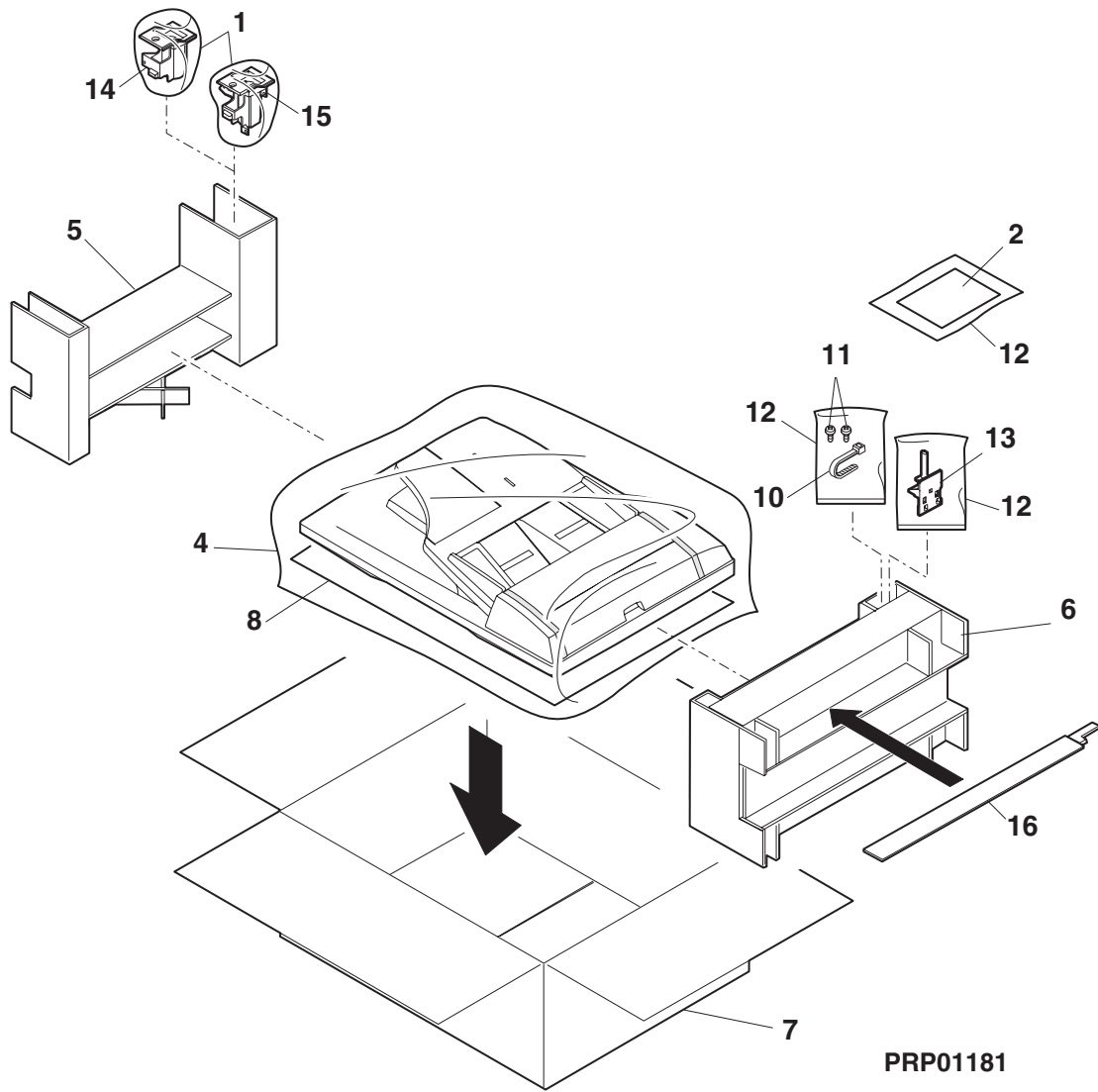


PRP01178

ITEM NO.	PARTS NO.	PARTS NAME	QTY / PAGE	QTY / PACK	P	I	R	BSI NO.	TO	FROM	SERIAL NO.	REMARKS	C
1	6LA58625900	Original tray	1	1									
2	6LA58625500	Control plate F	1	1									
3	6LA58625600	Control plate R	1	1									
4	41330538000	MF rack gear	2	1									
5	41330608100	Screw M3X8	3	1									
6	41330537100	M feed gear	1	1									
7	41330530600	Control plt SP	1	1									
11	6LA58617700	SPF pickup unit	1	1									
13	41330607000	Screw M4X10	5	1									
14	6LA58617800	SPF trans. Unit	1	1									
15	41330513400	Wire band	1	1									
16	6LA58632200	Base tray sheet	1	1									
17	41330552700	Transport sheet	3	1									
18	41330531000	Earth SP	1	1									
19	6LA58632000	OC sheet	1	1									
20	41330606500	Screw M3X8	4	1									
21	6LA58626200	SPF hinge	2	1									
22	41330607700	Screw M4X14	6	1									
23	41330539600	Delivery roller	2	1									
24	41330556800	Sponge	2	1									
25	41330541300	Delivery shaft	1	1									
26	41330531500	Delivery spring	2	1									
27	41330530700	Transport SP	2	1									
28	41330539500	Trans. roller	3	1									
29	41330541200	Transport shaft	1	1									
30	41330518500	Base tray plate	1	1									
31	41330522400	Screw M3X8	5	1									
33	6LA58625800	Base tray	1	1									
34	6LA58630100	OC mat	1	1									
35	41330554800	MT press sheet	1	1									
36	41330555000	Earth sheet SPF	1	1									
37	41330528600	PS earth SP SPF	1	1									
38	6LA58632300	Rear side mylar	3	1									
39	6LA58632400	Rear side mylar	2	1									
40	6LA58632500	OC sheet mylar	1	1									
45	6LA58632100	Bk detect sheet	1	1									
501	6LA58619900	SPF org try unt	1	1									







PARTS NO.	PARTS NAME	Q' TY	Q' TY	PAGE	ITEM NO.	PIR	B S I NO.	SERIAL NO.	REMARKS	LOCATION	C
		PAGE	PACK								
41330504100	SPF sensor PWB	1	1	2	7						
41330511100	OPN/CLS ext.	1	1	2	1						
41330513000	JAM release LV	1	1	3	28						
41330513400	Wire band	1	1	1	15						
		1	1	3	10						
		1	1	4	10						
41330514200	Clutch boss	1	1	2	19						
41330514500	M bushing C	1	1	2	22						
41330514600	M bushing C	3	1	2	20						
41330515500	Frame R	1	1	3	20						
41330515600	Drive frame	1	1	3	12						
41330518500	Base tray plate	1	1	1	30						
41330519800	Plate	1	1	3	22						
41330521400	Paper stopper	1	1	2	5						
41330522300	Screw	1	1	3	3						
41330522400	Screw M3X8	5	1	1	31						
41330523700	Drive arm	1	1	3	5						
41330523800	Solenoid arm	1	1	2	13						
41330523900	Stopper arm	1	1	2	4						
41330524000	Pick up arm	1	1	2	34						
41330525100	Detect LV Act	1	1	2	9						
41330525200	OPN/CLS LV Act	1	1	2	10						
41330528000	Pressure spring	1	1	3	23						
41330528100	Paper guide SP	2	1	3	29						
41330528500	PF spring	1	1	2	33						
41330528600	PS earth SP SPF	1	1	1	37						
41330529000	MF clutch SP B	1	1	2	18						
41330529900	PF frame spring	1	1	2	36						
41330530600	Control pit SP	1	1	1	7						
41330530700	Transport SP	2	1	1	27						
41330530800	OPN/CLS lock SP	2	1	3	24						
41330531000	Earth SP	1	1	1	18						
41330531500	Delivery spring	2	1	1	26						
41330531600	Drive arm SP	1	1	3	11						
41330531700	Clutch pawl SP	1	1	2	25						
41330531800	Solenoid arm SP	1	1	2	14						
41330532400	BELT B75MXL4.8	1	1	3	27						
41330532500	Belt 83MXL4.8	1	1	3	15						
41330532700	Bearing	1	1	3	18						
41330533400	Bearing B-F6-7	3	1	3	19						
41330536600	Gear 48T/15T	1	1	3	16						
41330536800	Clutch gear 20T	1	1	2	16						
41330537100	M feed gear	1	1	1	6						
41330537300	Gear 27T	1	1	3	4						
41330537400	Gear 16T	1	1	2	28						
41330537600	Gear 20T	3	1	2	30						
41330538000	MF rack gear	2	1	1	4						
41330538800	20MXL pulley	1	1	2	23						
41330538900	22MXL pulley	2	1	3	26						
41330539500	Trans. roller	3	1	1	28						
41330539600	Delivery roller	2	1	1	23						
41330540700	MPF roller	1	1	2	31						
41330541200	Transport shaft	1	1	1	29						
41330541300	Delivery shaft	1	1	1	25						
41330541500	Clutch shaft	1	1	2	21						
41330543700	Front cover	1	1	3	37						
41330543800	Rear cover	1	1	3	38						
41330546700	Paper guide	1	1	3	34						
41330547900	Hinge guide L	1	1	4	14						
41330548000	Hinge guide R	1	1	4	15						
41330548300	U-turn PA guide	1	1	3	1						
41330550600	SPF clt sleeve	1	1	2	17						
41330552400	White sheet	1	1	3	35						
41330552700	Transport sheet	3	1	1	17						
41330552800	FLG sheet DUP2	1	1	3	14						
41330553400	Sheet	1	1	3	21						
41330554800	MT press sheet	1	1	1	35						
41330555000	Earth sheet SPF	1	1	1	36						
41330556300	PF sheet	1	1	3	25						
41330556800	Sponge	2	1	1	24						

PARTS NO.	PARTS NAME	Q' TY / PAGE	Q' TY / PACK	PAGE	ITEM NO.	PIR	B S I NO.	SERIAL NO.	REMARKS	LOCATION	C
41330556900	Stopper sponge	11		2	2						
41330557500	Clutch pawl	11		2	26						
41330566000	Inlet sensor	11		3	31						
41330567000	SPF motor	11		3	7						
41330568600	PU solenoid	11		2	11						
41330570400	Packing add L	11		4	5						
41330570500	Packing add R	11		4	6						
41330571500	OC sheet	11		4	8						
41330572600	Bag 120X180mm	21		4	1						
41330572700	Bag 60X100mm	31		4	12						
41330573300	Bag 790X740mm	11		4	4						
41330605500	Screw M3X5	11		3	6						
41330605600	Screw M3X6	21		2	12						
41330606500	Screw M3X8	41		1	20						
		41		2	6						
41330606700	Screw M3X12	41		3	2						
41330607000	Screw M4X10	51		1	13						
41330607400	Screw M3X10	51		3	39						
41330607700	Screw M4X14	61		1	22						
41330608100	Screw M3X8	31		1	5						
41330608600	Screw M3X8	21		4	11						
41330609000	Spring pin 2X7	31		2	29						
41330609300	E-ring	11		2	24						
41330609500	E-ring	31		2	15						
41330609600	E-ring	61		3	13						
6LA58617700	SPF pickup unit	11		1	11						
		11		2	901						
6LA58617800	SPF trans. Unit	11		1	14						
		11		3	901						
6LA58618600	SPF tension plt	11		3	40						
6LA58619900	SPF org try unt	11		1	501						
6LA58621800	SPF IF harness	11		3	9						
6LA58622100	Sensor harness	11		2	8						
6LA58623000	Bk sensor unit	11		4	13						
6LA58624000	Rear cover	11		4	16						
6LA58624600	PF frame	11		2	35						
6LA58625200	Spring pin	31		3	17				2. 5X9		
6LA58625500	Control plate F	11		1	2						
6LA58625600	Control plate R	11		1	3						
6LA58625800	Base tray	11		1	33						
6LA58625900	Original tray	11		1	1						
6LA58626200	SPF hinge	21		1	21						
6LA58628100	SPF tension SP	11		3	41						
6LA58628900	PS roller	11		3	36						
6LA58629000	Delivery roller	11		3	32						
6LA58629200	Pickup roller	11		2	27						
6LA58629300	PF shaft	11		2	32						
6LA58629600	Discharge brush	11		3	33						
6LA58630100	OC mat	11		1	34						
		11		4	101						
6LA58630500	Trans. PA guide	11		3	30						
6LA58632000	OC sheet	11		1	19						
6LA58632100	Bk detect sheet	11		1	45						
6LA58632200	Base tray sheet	11		1	16						
6LA58632300	Rear side mylar	31		1	38						
6LA58632400	Rear side mylar	21		1	39						
6LA58632500	OC sheet mylar	11		1	40						

TOSHIBA

TOSHIBA TEC CORPORATION

1-1, KANDA NISHIKI-CHO, CHIYODA-KU, TOKYO, 101-8842 JAPAN