

TOSHIBA

Print Kit

**OPERATOR'S MANUAL/
FOR PRINTER FUNCTION
Local Setup**

CP120F/125F

E1-26505

FCC NOTICE

This equipment has been tested and found to comply with the limits for a Class A digital device, pursuant to Part 15 of the FCC Rules. These limits are designed to provide reasonable protection against harmful interference when the equipment is operated in a commercial environment. This equipment generates, uses, and can radiate radio frequency energy and, if not installed and used in accordance with the instruction manual, may cause harmful interference to radio communications. Operation of this equipment in a residential area is likely to cause harmful interference in which case the user will be required to correct the interference at his own expense.

WARNING:

Changes or modification made to this equipment, not expressly approved by Toshiba Tec or parties authorized by Toshiba Tec could void the user's authority to operate the equipment.

"THIS DIGITAL APPARATUS DOES NOT EXCEED THE CLASS 'A' LIMITS FOR RADIO NOISE EMISSIONS FROM DIGITAL APPARATUS SET OUT IN THE RADIO INTERFERENCE REGULATIONS OF THE CANADIAN DEPARTMENT OF COMMUNICATIONS".

"LE PRESENT APPREIL NUMERIQUE N'EMET PAS DE BRUITS RADIOELECTRIQUES DEPASSANT LES APPLICABLES AUX APPAREILS NUMERIQUES DE LA CLASSE 'A' PRESCRITES DANS LE REGLEMENT SUR LE BROUILLAGE RAIODELECTRIQUE EDICTE PAR LE MINISTERE DES COMMUNICATIONS DU CANADA."

For European models only:

WARNING:

This product complies with Class A for network connection. In a domestic environment this product may cause radio interference in which case the user may be required to take adequate measures.

1. Do not touch the connector terminal when disconnecting the cables of peripheral equipment.
2. Before opening any covers or removing any units from the copier, discharge the static electricity from your body by touching a metal part of the copier.

This product is carrying the CE-Mark in accordance with the related European Directives. Responsible for CE-marking is Toshiba Europe GmbH Hammfelddamm 8,41460 Neuss, Germany. Phone +49-2131-158-01.

No part of this manual may be copied in whole or part without permission.

The contents of this manual may change without notification.

Trademarks described in this manual:

- Ethernet is a registered trademark of US Xerox Corporation.
- The official name of Windows 95 is Microsoft Windows 95 Operating System.
- The official name of Windows 98 is Microsoft Windows 98 Operating System.
- Microsoft, Windows, Windows NT, Microsoft Internet Explorer, and the brand names and product names of other Microsoft products are trademarks or registered trademarks of US Microsoft Corporation in the US and other countries.
- IBM PC/AT is a registered trademark of US International Business Machine Corporation.
- Destiny™ is a registered trademark of Destiny Technology Corporation.
- WinPanel™ is a registered trademark of Destiny Technology Corporation.
- NetPanel™ is a registered trademark of Destiny Technology Corporation.
- TrueType is a trademark of US Apple Computer Inc.
- Other company names and product names in this manual are the trademarks or registered trademarks of their respective companies.

Intellectual Property Rights for softwares

- Destiny®, LaserAct®, PageStyler®, DPOS®, are the registered trademark of Destiny Technology Corporation.
- WinPanel™, NetPanel™, are the registered trademark of Destiny Technology Corporation.
- LaserAct® 6 Copyright ©1992-2000, Destiny Technology Corp. Ver.2.0 All Rights Reserved.
- PageStyler®II Copyright ©1995-2000, Destiny Technology Corp. Ver.2.0 All Rights Reserved.
- WinPanel™ Copyright ©1995-2000, Destiny Technology Corp. Ver.1.0 All Rights Reserved.
- NetPanel™ Copyright ©1995-2000, Destiny Technology Corp. Ver.1.0 All Rights Reserved.
- Copyright © TOSHIBA TEC Corp. 2000 All Rights Reserved.
- Copyright 1998, AGFA Division, Bayer Corp.
- Copyright © 1999-2000 Netsilicon, Inc. All Rights Reserved.

Thank you for purchasing Toshiba Tec's GA-1020 PCL Printer Unit. This operator's manual explains how to set up the printer, correctly use its functions, and troubleshoot when something goes wrong. Read this manual before using your printer unit. Keep this operator's manual within easy reach so that you may use it to achieve quality printing results every time and make the most of your printer's functions.

*This operator's manual applies to the printing functions of the GA-1020.

TABLE OF CONTENTS

■ INTRODUCTION	5
SYSTEM REQUIREMENTS	6
PC/AT machine, or its equivalent	6
EXAMPLES OF CONNECTING THE PRINTER	7
Example of connection in local mode	7
Example of connection in a client-server type network	7
Example of connection in a peer-to-peer type network	7
SETUP FLOW	8
Local Connection	8
Network Connection	8
■ INSTALLING THE PRINTER DRIVER	9
INSTALLED COMPONENTS	10
Features of Each Printer Driver	10
Features of the TOSHIBA Status Display	10
INSTALLING THE PRINTER DRIVER TO Windows	11
UNINSTALLING THE PRINTER DRIVER	17
INSTALLING THE AGFA FONT MANAGER	18
Install AGFA Font Manager	18
Uninstall AGFA Font Manager	21
Description of Screen	22
Getting Started with AGFA Font Manager	23
■ PRINTING	25
PRINTING IN Windows 95/98/NT4.0	26
Printing	26
Canceling a Print Job	29
■ SETTINGS FOR PRINTING	31
DISPLAYING THE PRINTER PROPERTIES	32
Setting the Initial Values for Printing	33
Printing Though an Application	34
SCREEN DETAILS	35
[Paper] Tab	37
[Enlarge/Reduce Printing] Screen	40
<i>Enlarge/Reduce Printing by Paper Size</i>	42
<i>Enlarge/Reduce Printing by Zoom</i>	43
[Margin] Tab	44
[Output] Tab	46
[Special Printing] Screen	49
[Cover Sheet] Tab	50

[Watermark] Tab	52
The Screen of Registration and Edit	54
[Print Quality] Tab	56
For the PCL-5e Driver	56
For the PCL-XL Driver	58
[Option] Tab	59
[Other] Tab	61
■ TOSHIBA STATUS DISPLAY FUNCTION	63
STARTING TOSHIBA STATUS DISPLAY	64
Environmental Requirements	64
Type of Screen	65
Description of Screen	66
PRINTER SETTING	67
Screen Details	67
[Paper] Tab	69
[Printer Setting] Tab	71
[Test Print] Tab	73
[PCL Font] Tab	81
[NIC Configuration] Tab	82
[Configuration] Tab	84
<i>Clearing Print Counter</i>	85
<i>Changing Password</i>	86
■ OPERATING ON THE OPERATION PANEL	87
PCL OPTION	88
Data Clear	89
Form Feed	90
Print Status	91
Print Font	92
Continuous Feed	93
Bypass Setting	94
Job Cancel	95
■ TROUBLESHOOTING	97
WHEN AN ERROR MESSAGE IS DISPLAYED.....	98
WHEN PRINTING CANNOT BE PERFORMED.....	100
■ SPECIFICATIONS, AND OTHERS	101
SPECIFICATIONS OF THE PRINTER UNIT	102
LIST OF INTERNAL PCL FONTS	103
PRINTER CABLE SPECIFICATIONS	105

INTRODUCTION

INSTALLING THE PRINTER DRIVER

PRINTING

SETTINGS FOR PRINTING

TOSHIBA STATUS DISPLAY FUNCTION

OPERATING ON THE OPERATION PANEL

TROUBLE-SHOOTING

SPECIFICATIONS, AND OTHERS



INTRODUCTION

SYSTEM REQUIREMENTS

This machine can be connected to the following computers.

PC/AT machine, or its equivalent

This machine can be used in local mode via a parallel printer cable, on a client-server network via Windows NT or NetWare, or on a peer-to-peer network via TCP/IP or IPX/SPX.

- Hardware

Display Resolution : 640 x 480 dots or more

- OS

Microsoft Windows 95 Operating System, English Version

Microsoft Windows 98 Operating System, English Version

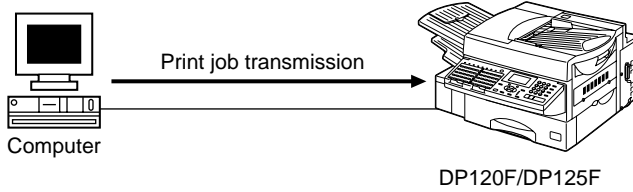
Microsoft Windows NT Workstation Operating System 4.0, English Version

Microsoft Windows NT Server Network Operating System 4.0, English Version

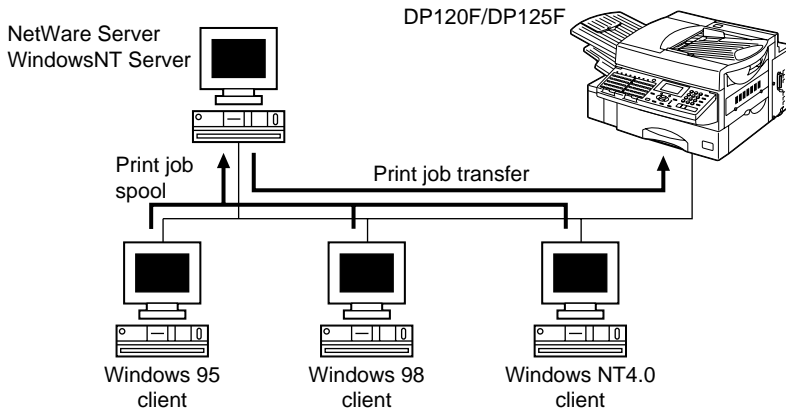
EXAMPLES OF CONNECTING THE PRINTER

The configuration of this machine is shown below.

Example of connection in local mode (parallel connection)

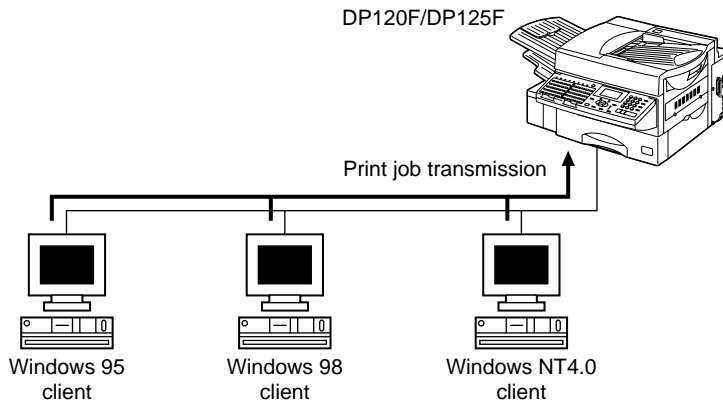


Example of connection in a client-server type network



* This configuration requires an optional network interface card.

Example of connection in a peer-to-peer type network



* This configuration requires an optional network interface card.

SETUP FLOW

Local Connection (Connecting with Parallel Printer Port)

Using the printer when connected by parallel cable to a computer running Windows 95/98/NT.

Install the Printer Driver	Install the appropriate Printer Driver for the Operating System used. (See "INSTALLING THE PRINTER DRIVER.")
Bypass Tray Setting	Configure the Bypass tray setting. (See "OPERATING ON THE OPERATION PANEL.")
Setup the [Option] Tab	Configure Options. (See "SETTINGS FOR PRINTING-[Option] Tab.")

Network Connection (Connecting with Network Interface Card)

Using the printer on a client-server network with Windows NT server, or on a peer-to-peer TCP/IP and IPX/SPX network requires an optional network interface card.

* Refer to OPERATOR'S MANUAL/FOR PRINTER FUNCTION - Network Setup for further details.

INSTALLING THE PRINTER DRIVER

INSTALLED COMPONENTS

The printer software installation includes the printer drivers and the TOSHIBA Status Display.

Features of Each Printer Driver

Several printer drivers are available for this machine. Please select the appropriate driver when printing to achieve optimal output.

PCL-5e : The PCL-5e driver is recommended when printing mostly text and when print speed is important.

PCL-XL : The PCL-XL driver is recommended for printing graphics.

SUPPLEMENT:

Several printer drivers may be installed on one computer.

Features of the TOSHIBA Status Display

The TOSHIBA Status Display can monitor the printer status, whenever certain events occur on the printer, such as paper jam, paper out, and so on. The system can report them to users. Users can also set the printer configuration information through the system.

NOTES:

- The Printer Drivers and TOSHIBA Status Display is provided for each OS. Be certain to use the right tools for your OS.
- This CD-ROM contains a "README" file which describes precautions to keep in mind about the printer drivers and various applications. Please read it before installing the Printer Drivers and TOSHIBA Status Display.

INSTALLING THE PRINTER DRIVER TO Windows

This section describes the installation of the printer drivers and the Status Display to Windows 95/98 or NT4.0 when your DP120F/DP125F is connected in local mode. If your DP120F/DP125F is connected to a peer-to-peer type network or client server network, see the OPERATOR'S MANUAL/FOR PRINTER FUNCTION - Network Setup.

SUPPLEMENTS:

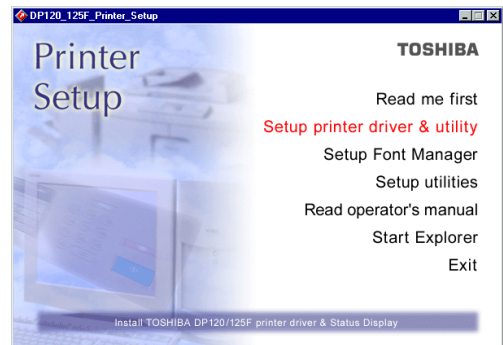
- This manual describes settings for Windows 95. The setting details are similar for Windows 98 and NT.
- To install the printer driver to Windows NT4.0, "Full Control" access rights will be necessary. A log on must be performed as a member of Administrators or Power Users group. For further details on access rights, see the Windows NT manual.

NOTE:

- Before installing the printer drivers and TOSHIBA Status Display, please be sure to exit from all of the programs in Windows.
- When your DP120F/DP125F is connected in local mode, the Windows Plug-and-Play function automatically starts the installation of the device driver in some environments. You can install the printer drivers by following this function as well as the Windows Add Printer prompts. However, it is highly recommended that you select cancel at any prompts and instead install from the CD-ROM. This will ensure that all printer drivers and TOSHIBA Status Display components are installed at the same time.

1 Insert the CD-ROM into the CD-ROM drive.

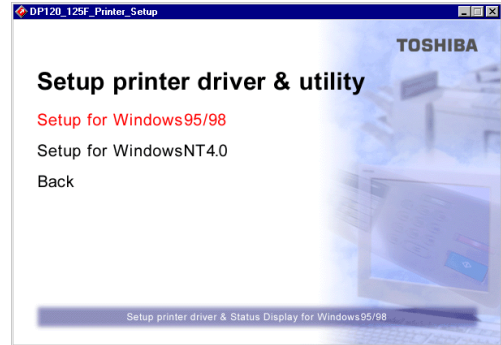
- The menu screen appears.
- If the menu screen is not automatically displayed, or when the printer drivers and the TOSHIBA Status Display is installed via the network, double-click on "DP120_125F_Printer_Setup.exe" in the Menu folder of the CD-ROM, that may be found in the Windows Explorer.



2 Click on [Setup printer driver & utility].

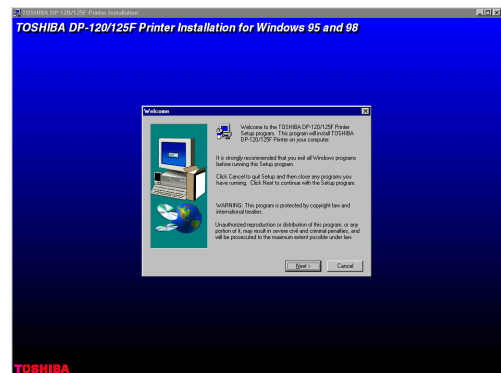
3 Click on the Setup for Windows button of your Windows Version.

- Click on [Setup for Windows 95&98] for Windows 95/98.
- Click on [Setup for WindowsNT4.0] for Windows NT4.0 Workstation or Windows NT Server 4.0.
- The Welcome screen appears.



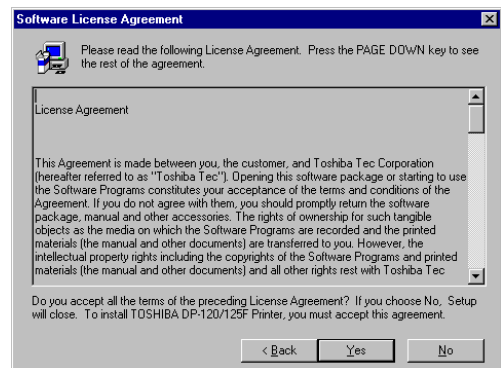
4 Click on [Next].

- The Software License Agreement screen appears. Please be sure to read through the agreement.



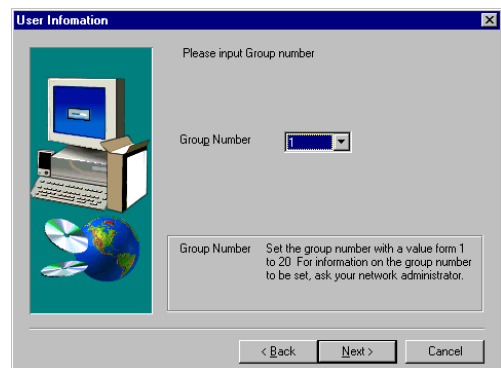
5 Click on [Yes].

- The User Information screen appears.



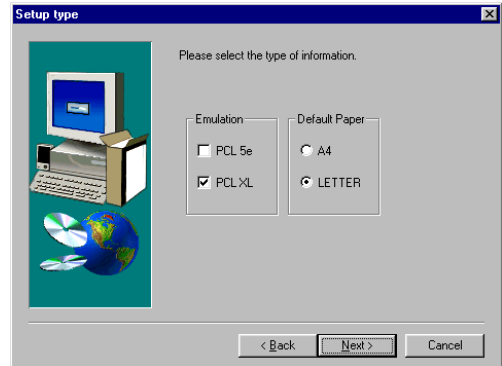
6 Select the [Group Number], and click on [Next].

- Group Number:
Set the group number with a value from 1 to 20.
For information on the group number to be set, ask your administrator.
- The Setup Type screen appears.



7 Select the “Emulation” and “Default Paper.”

- Emulation:
This designates the type of driver.
Check the emulation to be used. You can install multiple drivers in one installation.
- Default Paper:
Select the default paper to be used.

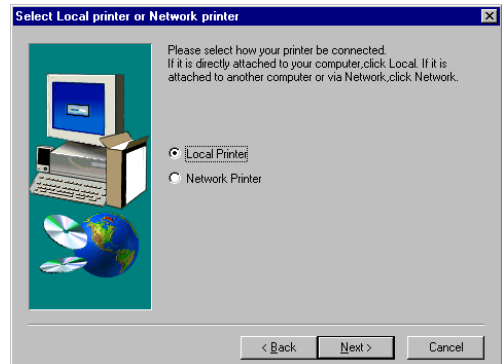


8 Click on [Next].

- The Select Local printer or Network printer screen appears.

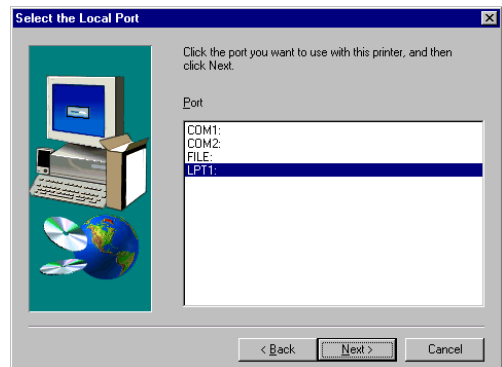
9 Select “Local Printer” and click on [Next].

- If your DP120F/DP125F is connected to a peer-to-peer type network or client server network, see OPERATOR’S MANUAL/FOR PRINTER FUNCTION - Network Setup.
- The Select the Local Port screen appears.



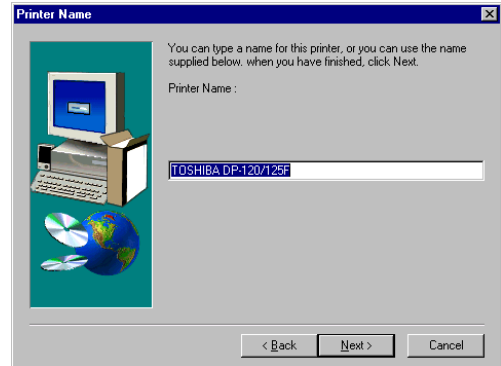
10 Select the Local Port "LPT1:", and click on [Next].

- The Printer Name screen appears.



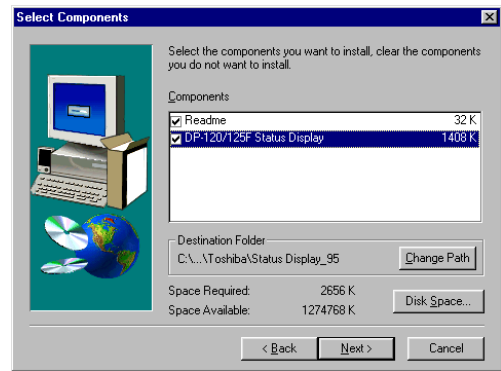
11 Enter the printer name, and click on [Next].

- The default printer name is automatically entered. If you do not need to change the name, click on [Next].
- The Select Components screen appears.



12 Check the components you want to install.

- Readme:
Install the README.TXT for the TOSHIBA Status Display.
- DP-120/125F Status Display:
Install the TOSHIBA Status Display.



13 Select the drive and path for the components to be installed.

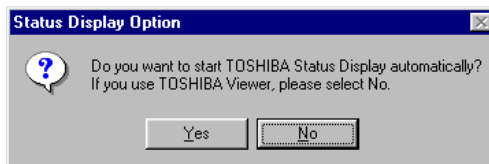
- [Change Path] button:
The Select Folder screen appears from which a folder can be selected or created to install the application into.
- [Disk Space...] button:
The Available Disk Space screen appears from which a disk drive with sufficient space to install the application can be selected.

14 Click on [Next].

- If you checked on "DP-120/125F Staus Display" to be installed, the Status Display Option screen appears.

15 Decide whether the Status Display is automatically started.

- If you want the Status Display to be started automatically when the computer is started, click on [Yes].
- If you want the Status Display to be started manually, click on [No].
- The Select Program Folder screen appears.



NOTE:

If you use the TOSHIBA Viewer, please select [No]. The Status Display and the TOSHIBA Viewer cannot be used at the same time.

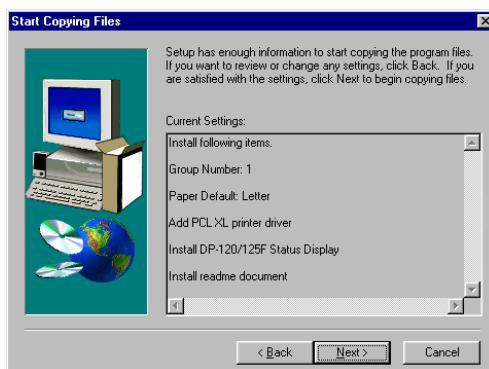
16 Select the Program Folder to be created, and click on [Next].

- The Start Copying Files screen appears.



17 Click on [Next].

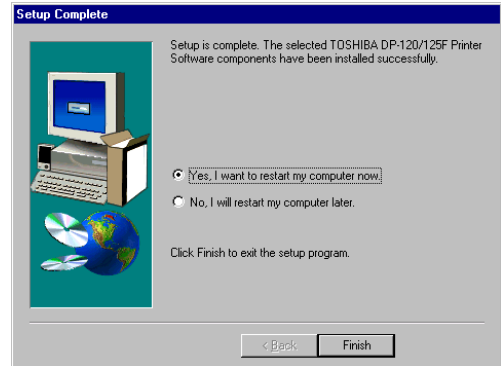
- Start the file copy. After completing the file copy, the Setup Complete screen appears.



18 Select “Yes, I want to restart my computer now.” and click on [Finish].

- You must restart Windows before using the printer drivers and software.

19 Complete the installation and restart your computer.



UNINSTALLING THE PRINTER DRIVER

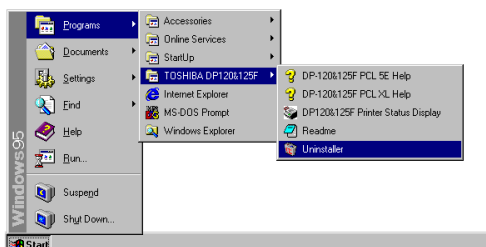
SUPPLEMENTS:

- If only printer drivers were installed by means of "Add Printers" or "Plug-and-Play", then just delete the printer icons from the Printer folder.
- If you only delete the printer icon from the Printers folder, the TOSHIBA Status Display will no longer be available.

Please make sure that all Toshiba printer utilities have been shut-down before uninstalling.

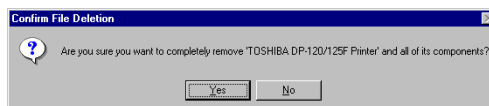
1 Run the Uninstall.exe.

- The shortcut to the Uninstall.exe can be found in the "TOSHIBA DP120&125F" program group folder, within the "Programs" folder.
- The Confirm File Deletion screen appears.



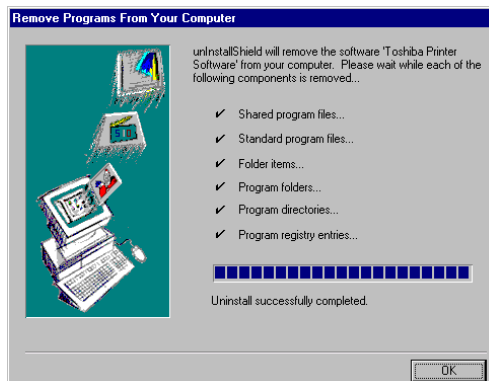
2 Click on [Yes].

- Start removing programs.



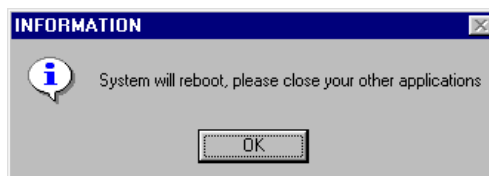
3 After removing programs are completed, click on [OK].

- The INFORMATION screen appears.
- If the TOSHIBA Status Display has not been installed to your computer, the INFORMATION screen does not appear and complete the uninstallation.



4 Click on [OK].

- Your computer is restarted.



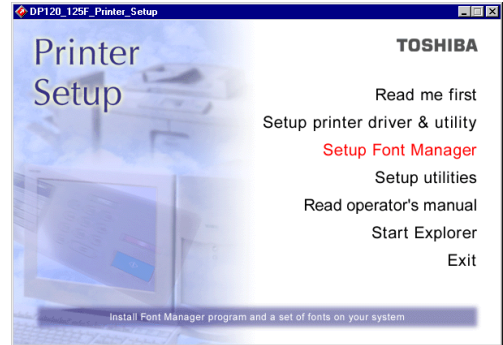
INSTALLING THE AGFA FONT MANAGER

Install AGFA Font Manager

The AGFA Font Manager application is used to install, uninstall, preview and categorize fonts on a computer.

1 Insert the CD-ROM into the CD-ROM drive.

- The menu screen appears.
- If the menu screen is not automatically displayed, or when the AGFA Font Manager is installed via the network, double-click on "DP120_125F_Printer_Setup.exe" in the Menu folder of the CD-ROM, that may be found in the Windows Explorer.



2 Click on the [Setup Font Manager].

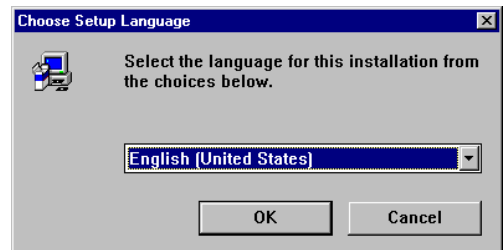
3 Click on the [Setup].

- The Choose Setup Language screen appears.



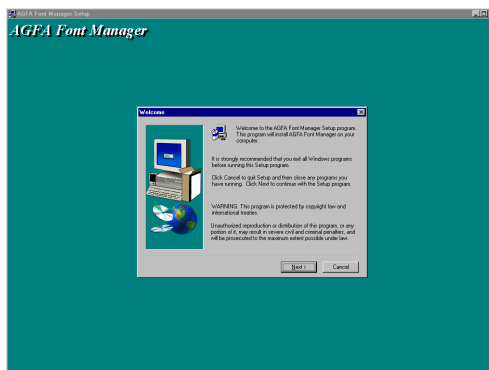
4 Select the Setup Language and click on [OK].

- The Welcome screen appears.



5 Click on [Next].

- The Select Components screen appears.



6 Check the components you want to install.

- Programs Files:
Install the AGFA Font Manager program.
- Fonts:
Install the default fonts to the AGFA Font Manager.

7 Select the drive and path for the components to be installed.

- [Browse...] button:
The Select Folder screen appears from which a folder can be selected or created to install the application into.
- [Disk Space...] button:
The Available Disk Space screen appears from which a disk drive with sufficient space to install the application can be selected.

8 Click on [Next].

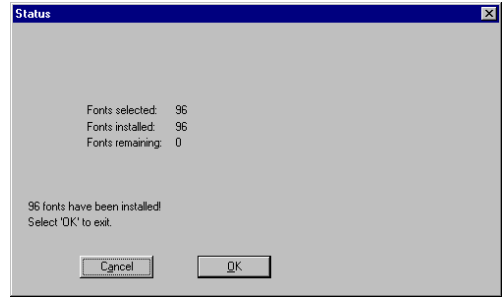
- Installation of the AGFA Font Manager and fonts begins.



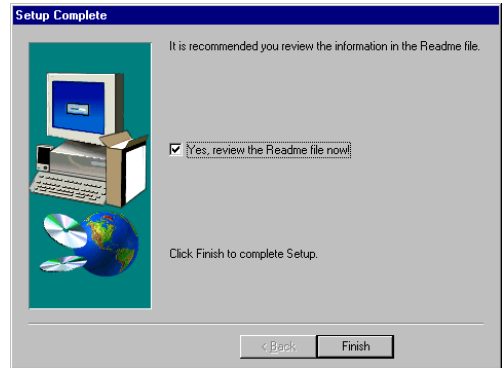
IMPORTANT:

While installation is under way, never take out the CD-ROM. Otherwise, the “AGFA Font Manager” may not be installed correctly.

9 Click on [OK].



10 Click [Finish].
● Installation is complete.

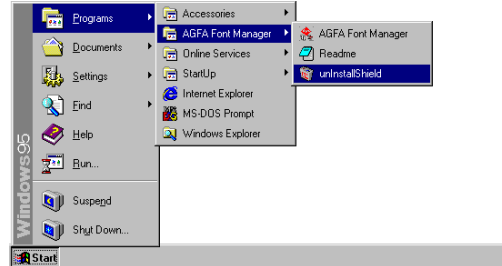


Uninstall AGFA Font Manager

Please make sure that all programs have been shut-down before uninstalling.

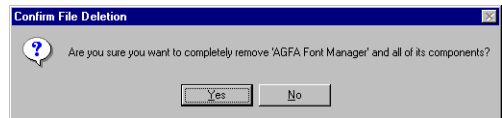
1 Run the Uninstall.exe.

- The shortcut to the Uninstall.exe can be found in the "AGFA Font Manager" program group folder, within the "Programs" folder.
- The Confirm File Deletion screen appears.



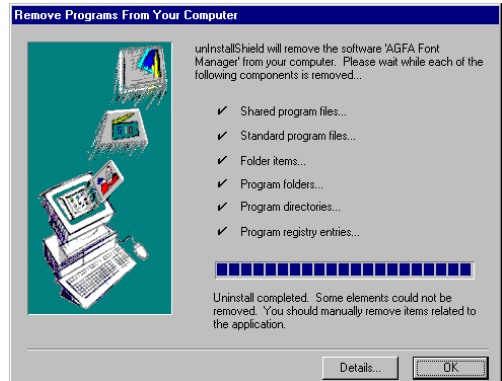
2 Click on [Yes].

- Start removing programs.

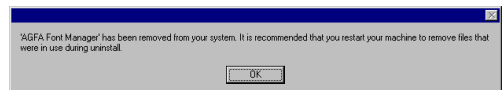


3 Click on [OK].

- You must restart Windows to complete the uninstall process.



4 Click on [OK] and restart your computer.

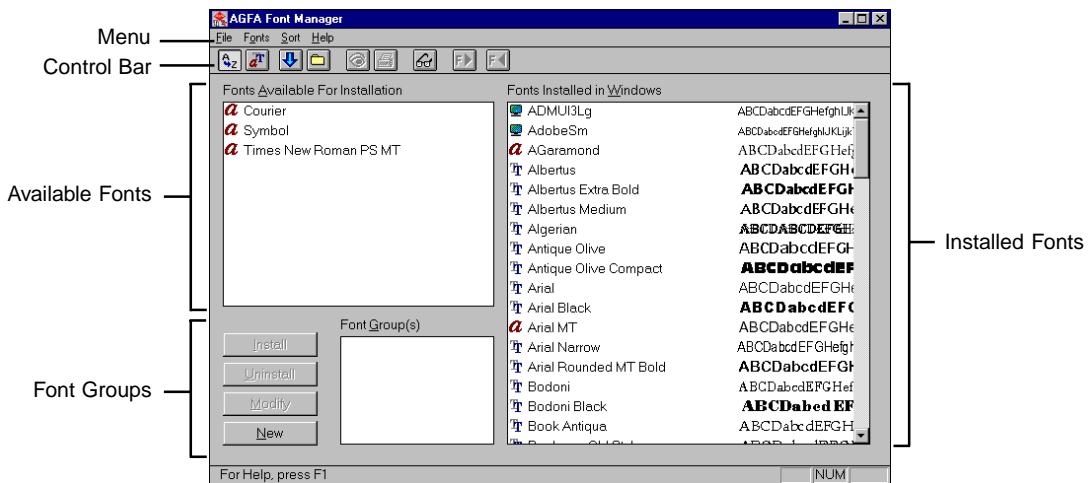


AGFA Font Manager can manage your fonts in Windows.

It can:

- Install and uninstall fonts in Windows.
- Load new fonts from distribution diskettes.
- Search your local and network drives for fonts.
- Preview the fonts on your computer or network.
- Create font groups for personal or workgroup projects.
- Sort your fonts in a variety of ways, etc.

Description of Screen



- **Menu** AGFA Font Manager conveniently allows you to access basic operations through menu items. Please see the Help to learn more about them.
- **Control Bar** AGFA Font Manager has a control bar to allow quick access to basic functions. Please see the Help to learn more about them.
- **Available Fonts** Display the list of available fonts. It is from this list that you can select fonts to install in Windows.
- **Installed Fonts** Display the family name of fonts which are installed and active under Windows.
- **Font Groups** Create, delete, and modify the font groups. Font grouping allows you to create custom collections of fonts and give them meaningful names. Font collections can represent different working scenarios, different users of your computer, or different styles you want to convey.

NOTE:
For further details of items and operating the AGFA Font Manager, press F1 to display the HELP window.

Getting Started with AGFA Font Manager

Install Fonts

- Select one or more fonts to install from the Available Fonts list (the left list box).
- Click on [Install Fonts] button.

View Font Samples

- Select a font in the Available Fonts list or Installed Fonts list.
- Click on [Preview Fonts] button.

Print Font Samples

- Select a font in the Available Fonts list or Installed Fonts list.
- Click [Print Samples] button.
- Click [OK] in the [Print Samples] dialog box to print the samples.

Search for Fonts

You can search for fonts on floppy disks, CD-ROMs, your hard disk, or network.

- Use the [Search for Fonts] button.
- Select where you want to search for fonts.
- Click on [OK].

Uninstall Fonts

- Select one or more fonts to be uninstalled from the Installed Fonts list.
- Click on [Uninstall Fonts] button.

Use Help

For more information about AGFA Font Manager, choose Help Topics in the Help menu.

PRINTING

PRINTING IN Windows 95/98/NT4.0

The following describes the printing procedure for Windows 95/98/NT4.0 applications and how to cancel a print job. The application "WordPad" is used as an example.

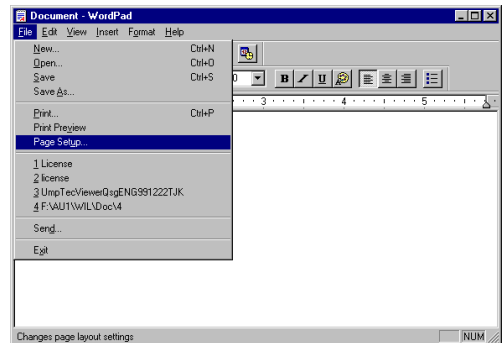
IMPORTANT:

The printing procedure may vary depending on the application. For further details, refer to the instructions and HELP attached to the application.

Printing

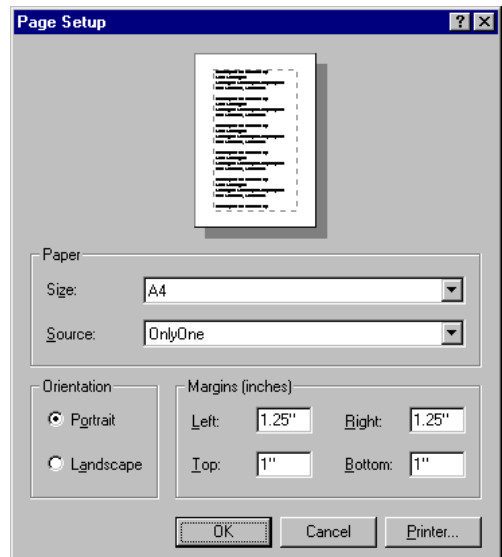
1 Open a WordPad document, then click on [Page Setup...] in the [File] menu.

- The [Page Setup] screen appears.

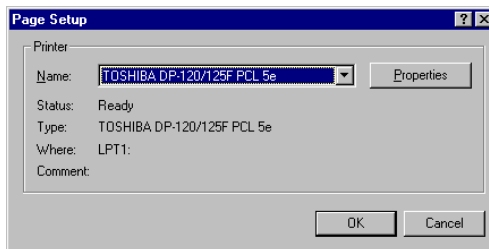


2 Click on [Printer...].

- The [Page Setup for Printer] screen appears.



- 3 Select the printer driver that you installed for the DP120F/DP125F, then click on [OK].

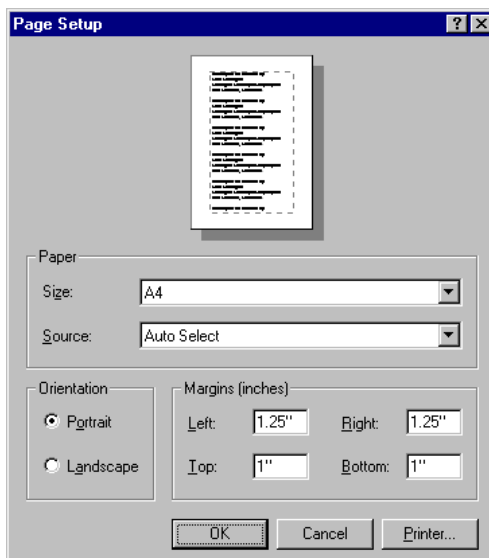


IMPORTANT:

- The [Name] displayed here is the name given to the printer driver when it was installed, or the name as it is displayed on the icon in Window's [Printer] folder.

- 4 Select the paper size and feeding direction, then click on [OK].

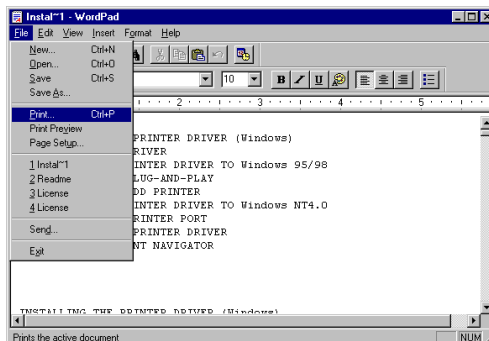
- Set the [Size] field to an appropriate paper size.
- Set the [Source] field to a paper feeder which contains paper corresponding to the selected paper size. If no particular feeder needs to be specified, set to "Auto Select".



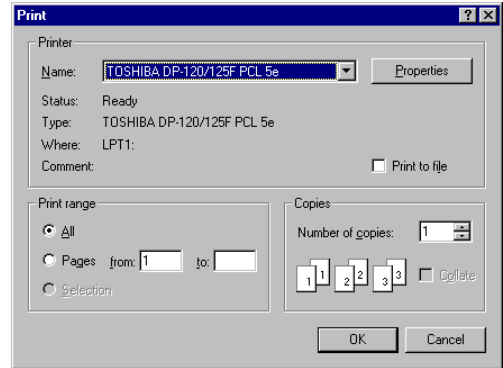
- 5 Create text using WordPad.

- 6 Click on [Print...] in the [File] menu.

- The [Print] screen appears.



- 7** Make sure the [Name] field corresponds to the name of the installed printer.



IMPORTANT:

- For printing in various ways (enlarged/reduced printing, Layout printing, etc.), click on [Properties] for the printer driver settings.
For the information of the printer driver properties, see the “PRINTER DRIVER SETTINGS.”

- 8** Click on the [OK] button.
- Printing begins.

- 9** The printed pages come out.
- Check the printout.

IMPORTANT:

If you can not print, see “TROUBLESHOOTING-WHEN PRINTING CANNOT BE PERFORMED...” .

Canceling a Print Job

1 Double-click on the printer icon displayed in the Windows Taskbar.

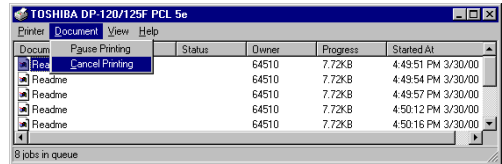
- The printer window appears.
- Alternatively, you can open Window's Printer folder and double-click the printer icon to display pending print jobs.



2 Select the document whose printing is to be canceled.

3 Click on [Cancel Printing] in the [Document] menu.

- The selected document is deleted, and printing is canceled.



SETTINGS FOR PRINTING

DISPLAYING THE PRINTER PROPERTIES

The printer can handle various printing situations by changing the Printer's Property settings. There are two ways to display the Printer's Properties. The tabs displayed vary depending on the way the properties are accessed.

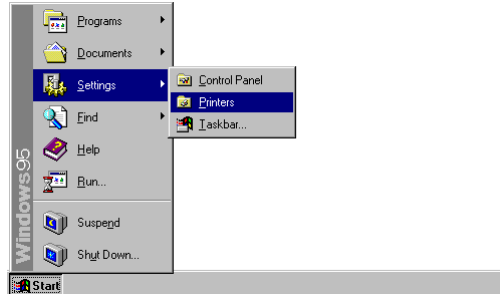
- Setting initial values of the Printer Properties through the Printers Folder:
 - The following tabs are displayed:
General, Details, Sharing, Paper, Margin, Output, Cover Sheet, Watermark, Print Quality, Option, Other
 - The [General], [Details], and [Sharing] tabs are for settings related to Windows 95/98/NT4.0.

- Setting the Printer Property through the Print Dialog of each application:
 - For printing through an application, you may change required items from the initial values. The new settings will be effective only for that application. When printing in any other application, those settings will no longer be effective. Please note, however, even the initial values are changed in some applications.
 - For displaying the Printer Properties through an application, neither the [General], [Details] nor [Sharing] tabs will be displayed.

Setting the Initial Values for Printing

The settings here will be the initial values of settings for printing through applications:

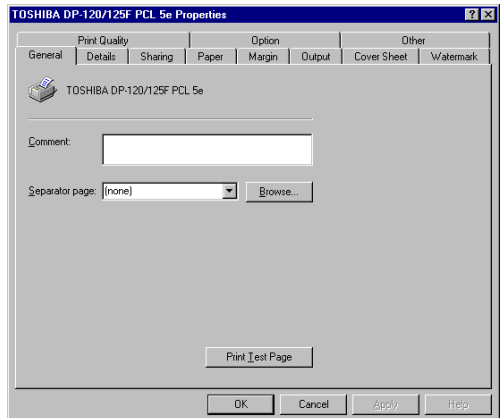
- 1 Click on the [Start] button, click on [Settings] and click on [Printers].



- 2 Select the icon for this printer, and select [Properties] from the [File] menu.



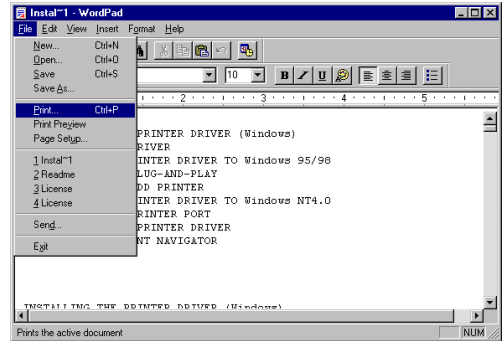
- 3 The properties screen of the printer appears.



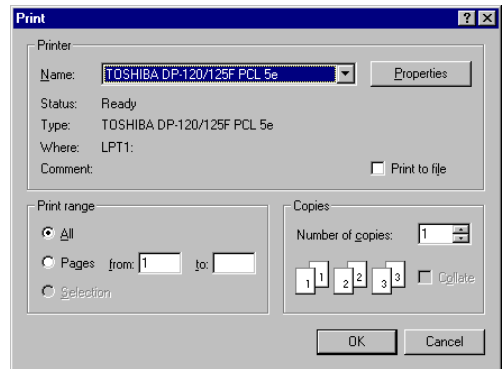
Printing Though an Application

Let's explain the procedure using "WordPad" as an example. The procedure to display the properties vary for each application. For further details, see the instructions for the application or see the HELP.

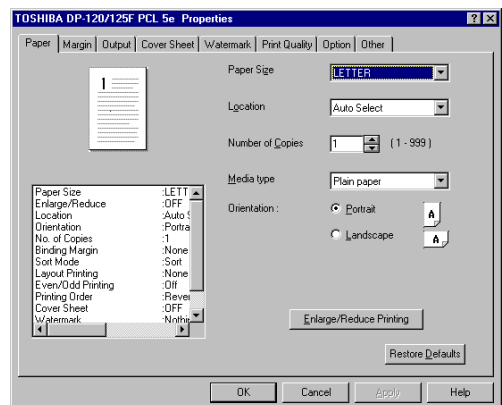
- 1 Click on [Print...] in the [File] menu.
 - The [Print] screen appears.



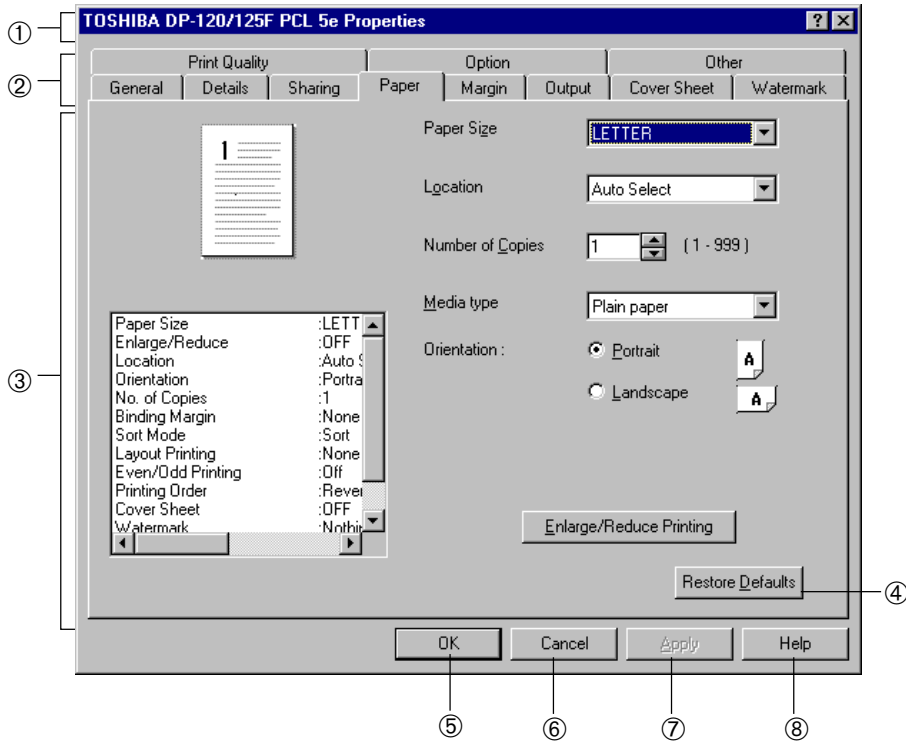
- 2 Click on [Properties].



- 3 The property screen of the printer appears.



SCREEN DETAILS



SETTINGS FOR PRINTING

① Printer Name

Displays the name given to the printer driver when it was installed, or the name as it is displayed on the icon in Window's Printer folder.

② Item Tabs

The setting menu items of the printer driver are displayed as tabs. Clicking on a tab will display the setting contents of the selected tab. The tabs displayed vary depending on the way the properties are accessed.

SUPPLEMENTS:

- The following description covers the tabs exclusive to settings for this printer: [Option] [Paper] [Margin] [Output] [Watermark] [Cover Sheet] [Print Quality] [Other]
- Other tabs displayed, such as [General] [Details] and [Sharing] are related to the functions of Windows 95/98/NT4.0. For further details, see the instructions for Windows or the HELP.

③ **Setting Contents**

Setting contents for each selected tab are displayed. For further details, see the instructions for each tab on the following pages.

④ **[Restore Defaults]**

Click on this to return the settings to the original factory defaults. This button is not provided on some tabs.

⑤ **[OK]**

Click on this to enter the input settings and complete the printer driver settings.

⑥ **[Cancel]**

Click on this to cancel the input settings and exit the printer driver settings.

⑦ **[Apply]**

Click on this to enter the input settings.

⑧ **[Help]**

Click on this when you want to see the HELP texts for the printer driver.

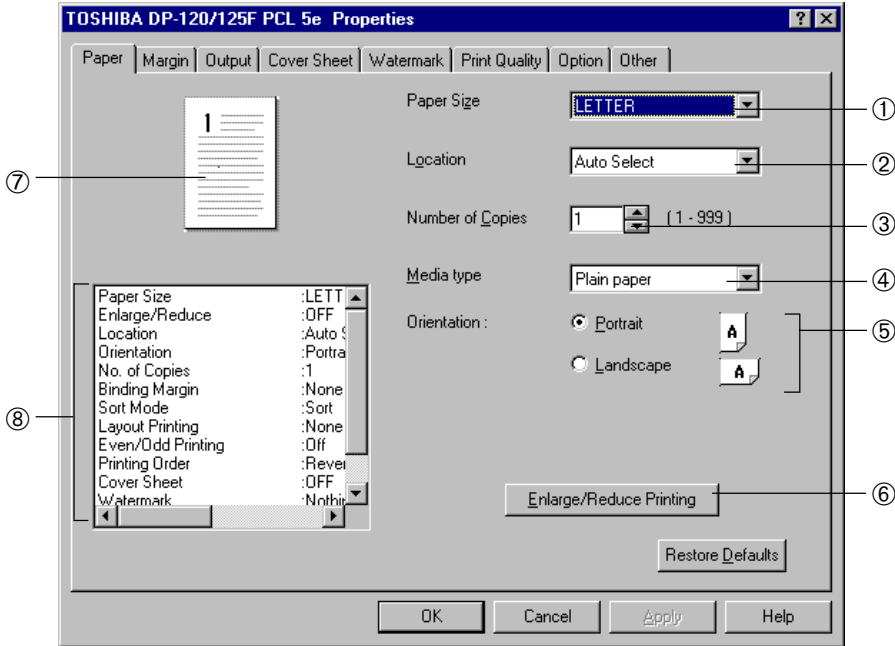
SUPPLEMENT:

Some applications may require their own settings. Also, some settings may differ from those in this printer driver. In such cases, please see the instructions for each application.

[Paper] Tab

This sets the properties of the paper for printing.

Setting items are for the paper size, tray location for feeding paper, number of copies, orientation for printing, media type of the paper, and enlarged or reduced printing.



① Paper Size

This selects the size of paper for printing.

NOTE: By selecting the Main Paper Size System when installing the printer driver, the default paper size value is set. Selecting the “A” System sets “A4” here, and selecting the “LT” system sets “LETTER” here, as the initial value.

- A4
- A5
- B5
- LEGAL
- LETTER
- STATEMENT
- FOLIO
- Env-#10
- Env-Monarch

SUPPLEMENT:

When the Bypass Tray is not installed in your DP120F/DP125F, only A4, LEGAL and LETTER are available for the Paper Size.

② Location

This selects the source for feeding paper. When paper of different sizes is loaded on several paper sources, select a paper feed method to use paper of an appropriate size.

NOTE: It is set to "Auto Select" when shipped from the factory.

- Auto Select

Automatically selects the paper set in the the printer according to the document size for feeding.

- Cassette1

Feeds paper from the Upper Recording Paper Tray.

- Cassette2 (Optional)

Feeds paper from the Middle Recording Paper Tray.

- Cassette3 (Optional)

Feeds paper from the Lower Recording Paper Tray.

- Stack Feed Bypass (Standard for DP125F and Optional for DP120F)

Paper is fed from the Bypass Tray.

③ Number of Copies

This sets the number of printed copies.

You can set any integer in the range from 1 to 999.

NOTE: It is set with "1" when shipped from the factory.

④ Media type

This sets the media type of the paper.

NOTE: It is set to "Plain paper" when shipped from the factory.

- Plain paper

Select this when using the general plain paper.

- Envelopes

Select this when using envelopes. This is available only when the Bypass Tray is installed.

- Transparencies

Select this when using transparent sheets. This is available only when the Bypass Tray is installed.

- Labels

Select this when using label paper. This is available only when the Bypass Tray is installed.

- Cardstocks

Select this when using cardstock paper. This is available only when the Bypass Tray is installed.

- Letterhead

Select this when using letterhead paper. This is available only when A4 or LETTER is selected for the Paper Size.

⑤ Orientation

This sets the paper printing direction, to either "Portrait" or "Landscape."

NOTE: It is set to "Portrait" when shipped from the factory.

⑥ [Enlarge / Reduce Printing]

Click on this for changing the size of the printed page image.

This [Enlarge / Reduce Printing] screen appears to allow setting the print data.

See [Enlarge / Reduce Printing] screen.

Enlarge/Reduce Printing is not available when:

- "Layout Printing" is checked on in Output.
- "Raster" is set for the Graphic mode in Print Quality with PCL-5e
- "Env-#10" or "Env-Monarch" is selected for the Paper Size.

⑦ Setting Confirmation Screen

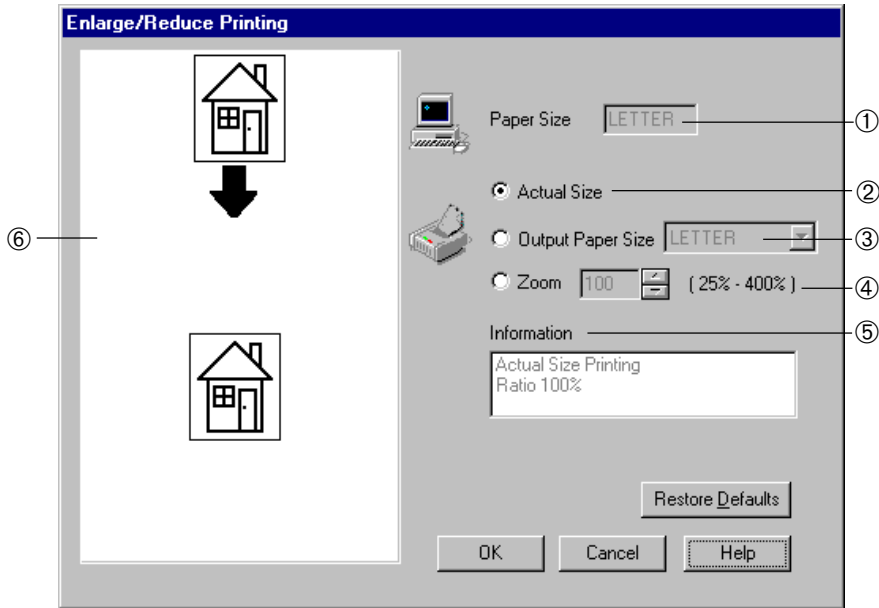
The status of the printed page with the input settings is displayed as an illustration.

⑧ Setting Confirmation List

The current settings for the printer driver is displayed.

[Enlarge / Reduce Printing] Screen

This screen appears by clicking on the [Enlarge / Reduce Printing] in the [Paper] Tab. You may change the magnification to print enlarged or reduced copies.



① Paper Size

Displays the paper size set for the [Paper Size] in the [Paper] tab.

② Actual Size

Select this for printing actual size.

③ Output Paper Size

This sets the size of print paper.

④ Zoom

This sets the zoom ratio for printing using a numeric value.

Any integer from 25 to 400 (%) can be set for the print zoom ratio.

⑤ Information

Displays the printing status and information on zoom ratio.

⑥ Setting Confirmation Screen

Displays the status of zoom settings as an illustration.

The pre-zoom status is displayed at the top, while the post-zoom status is displayed at the bottom.

(The display of the status is merely an image for comparison, it differs from the actual size.)

Relationship Between Paper Sizes and Reproduction Ratios

Output Size Paper Size	A4	A5	B5	FOLIO	LEGAL	LETTER	STATEMENT
A4	100	71	86	100	103	94	67
A5	141	100	122	141	146	133	94
B5	115	82	100	115	119	109	109
FOLIO	90	63	78	100	103	85	65
LEGAL	84	59	72	93	100	78	60
LETTER	97	69	84	97	100	100	65
STATEMENT	138	97	119	150	154	129	100

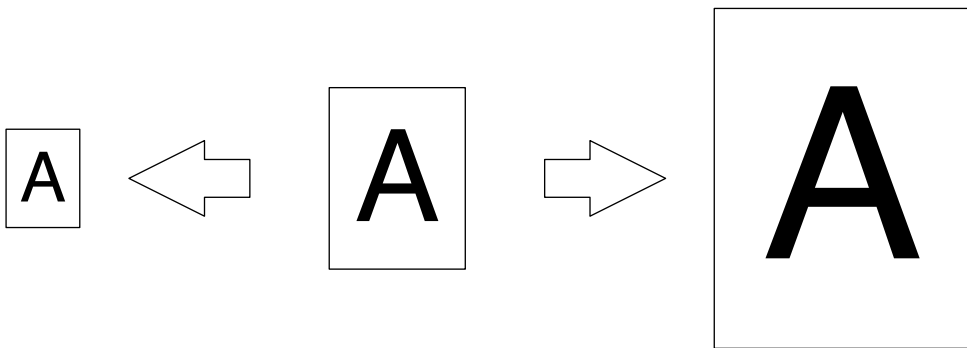
Unit : %

SUPPLEMENTS:

- When a watermark is designated, the designated watermark is enlarged/reduced for printing.
- When no gutter is set in Binding Margin, the designated Width of a Binding Margin is retained without being influenced by the enlarge/reduce printing.

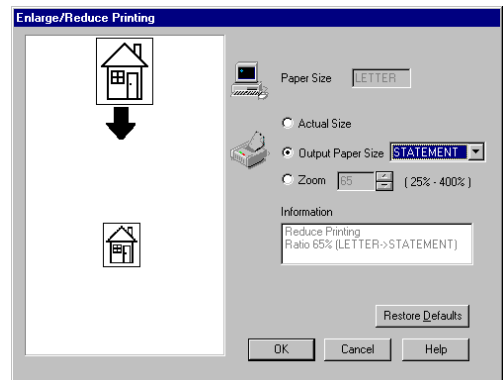
Enlarge / Reduce Printing by Paper Size

Enlarge/reduce printing is performed according to the size of paper to be printed.



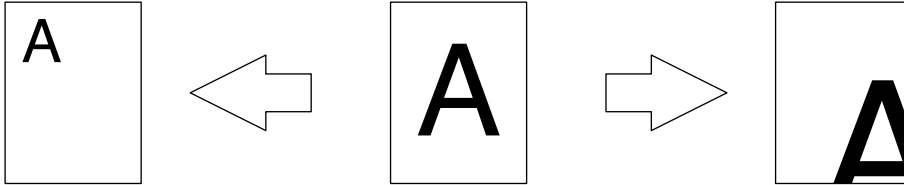
Example: To print a LETTER size document into STATEMENT size:

- 1 Display the [Enlarge / Reduce Printing] screen.**
- 2 Click on the check circle for Output Paper Size setting.**
- 3 Click on [▼] to display selective items, then click on “STATEMENT.”**
 - In the Information field, “Reduce Printing, Ratio 65% (LETTER->STATEMENT)” is displayed.
 - The Setting Confirmation Screen is displayed as in the figure on the right.
- 4 Click on [OK].**
 - The settings are entered and the [Paper] tab is displayed.



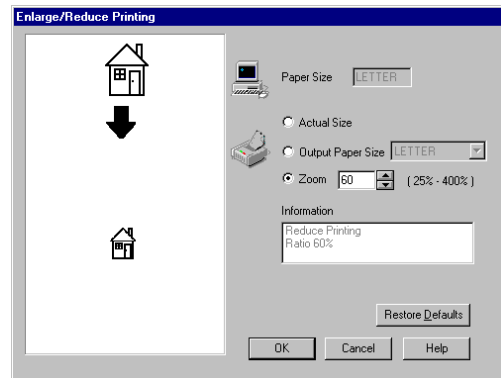
Enlarge / Reduce Printing by Zoom

Enlarge/reduce printing is made by designating the zoom ratio. Paper size remains unchanged.



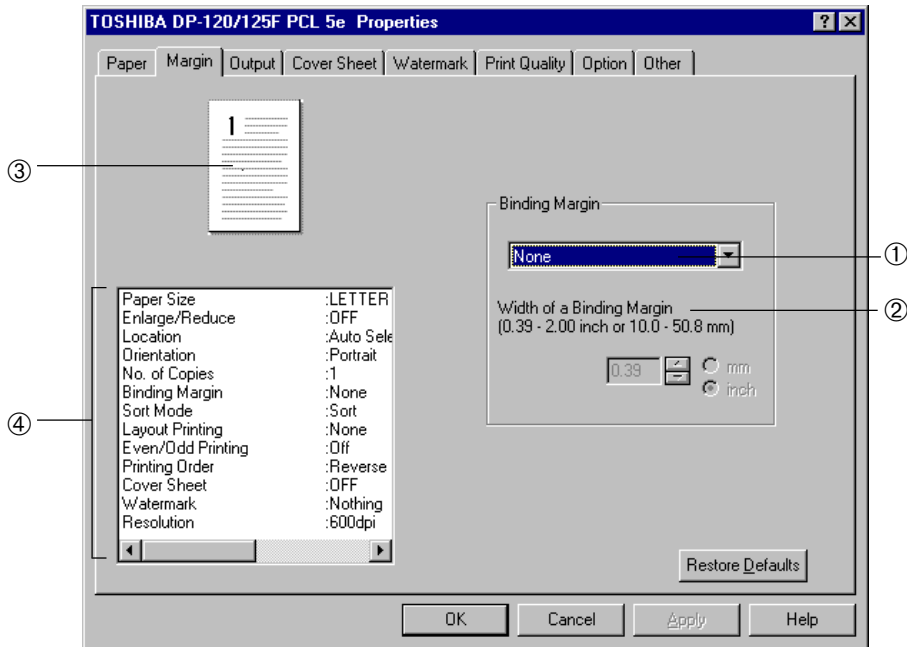
Example: To print a document into zoom ratio of 60%:

- 1 Display the [Enlarge / Reduce Printing] screen.**
- 2 Click on the check circle for Zoom setting.**
- 3 Click on [▲] or [▼] to set the zoom ratio to “60%.” (Or, you may directly input a required zoom rate in the list box.)**
 - In the Information field, “Reduce Printing, Ratio 60%” is displayed.
 - The illustration in the Setting Confirmation Screen is displayed as in the figure on the right.
- 4 Click on [OK].**
 - The settings are entered and the display returns to the [Paper] tab.



[Margin] Tab

This sets the gutter or margin space.



① Binding Margin

This selects whether or not the Binding Margin is set on paper to be printed.

NOTE: It is set with "None" when shipped from the factory.

● None

Select this when no gutter is to be set.

● Left

Select this when the gutter is set on the left side.

● Right

Select this when the gutter is set on the right side.

● Top

Select this when the gutter is set on the top side.

② Width of a Binding Margin

This sets the gutter width in millimeters or inches.

For setting in millimeters, select "mm" and set a value in the range from 10.0 to 50.8 mm in units of 0.1 mm.

For setting in inches, select "inch" and set a value in the range from 0.39 to 2.00 inches in units of 0.01 inch.

NOTE: It is set with 10.0 mm (0.39 inch) when shipped from the factory.

SUPPLEMENT:

When any gutter is set in Binding Margin, the Binding Margin will be added to the Width of a Paper Margin.

③ **Setting Confirmation Screen**

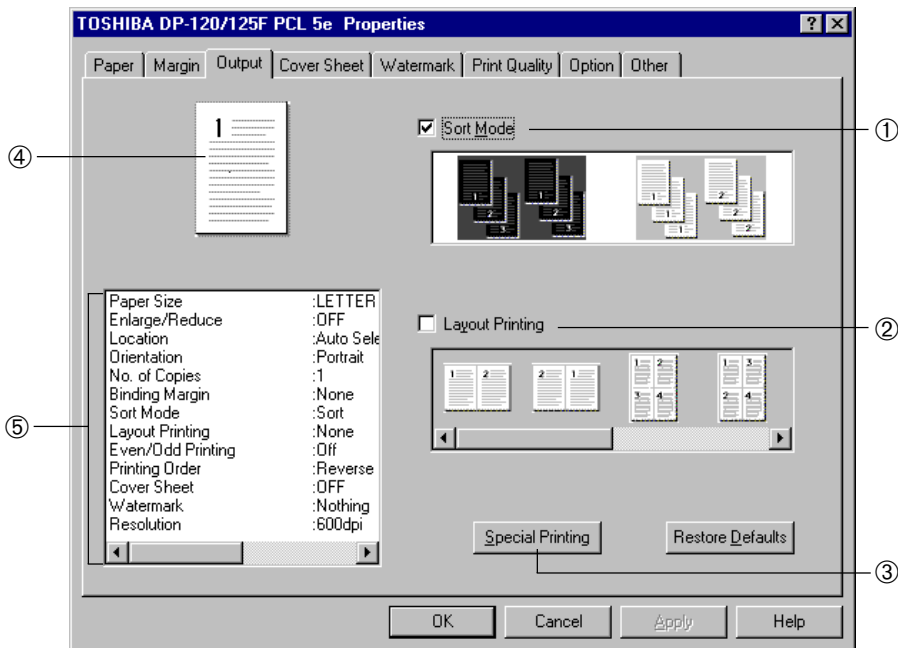
The status of printing with the input settings is displayed as an illustration.

④ **Setting Confirmation List**

The current settings for the printer driver are displayed.

[Output] Tab

This sets sorting, Layout printing (printing multiple pages on one sheet), and special printing.



① Sort Mode

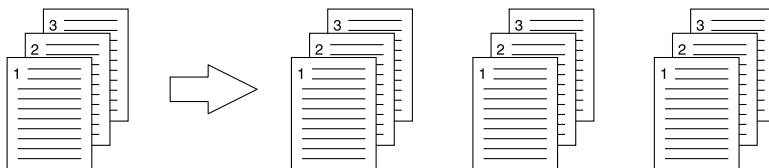
When multiple copies are made of the same document, printed sheets can be sorted. This function is useful for printing meeting materials and questionnaires.

For sort printing, check the checkbox, then click on the illustration for your requirement.

NOTE: It is set to "Sort" when shipped from the factory.

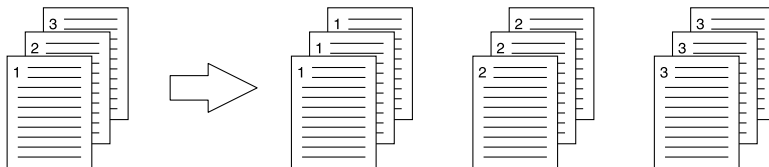
● Sort

Select this for sort-printing only (1, 2, 3...1, 2, 3...).



● Group

Select this for group-printing (1, 1, 1..2, 2, 2...i.e., to print copies of the same pages as a group).



② Layout Printing

Not available when enlarge/reduce printing is selected and/or Raster Graphics mode is selected on the Print Quality tab of the PCL-5e driver.

This sets Layout printing (to print multiple page images size-reduced on one page).

For Layout Printing, check the check box, then click on whichever illustration desired.

NOTE: It is not checked off when shipped from the factory.

- 2 in 1 right order

Print images of 2 pages are placed in the forward sequence on one page.

- 2 in 1 reverse portrait

Print images of 2 pages are placed in the backward sequence on one page.

- 4 in 1 right order landscape

Print images of 4 pages are placed in the forward and horizontal sequence on one page.

- 4 in 1 right order portrait

Print images of 4 pages are placed in the forward and vertical sequence on one page.

- 4 in 1 reverse landscape

Print images of 4 pages are placed in the backward and horizontal sequence on one page.

- 4 in 1 reverse portrait

Print images of 4 pages are placed in the backward and vertical sequence on one page.

- 9 in 1

Print images of 9 pages are placed on one page.

- 16 in 1

Print images of 16 pages are placed on one page.

NOTE:

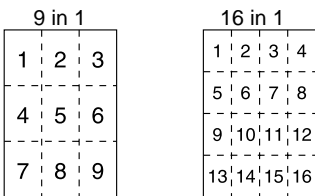
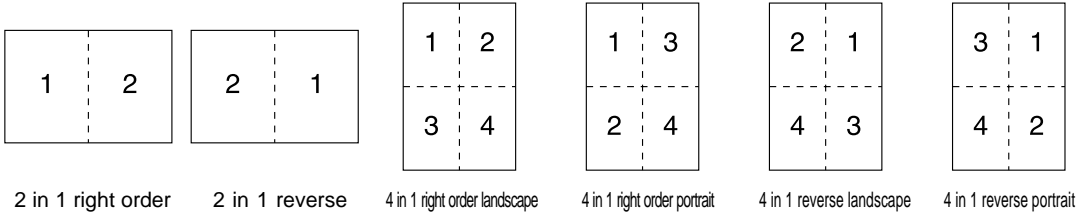
Two or more pages with different rotation cannot be printed on one page even if the Layout Printing is selected. If a page with different rotation is encountered during printing, that page will be printed on a separate sheet of paper and the print job will continue.

SUPPLEMENTS:

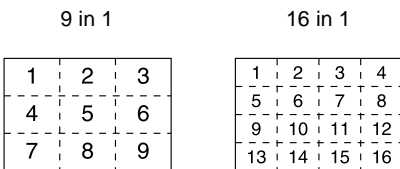
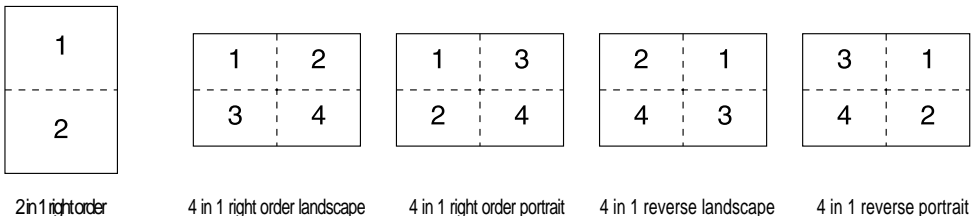
Placing Sequence of Layout Printing:

The placing sequence (layout) on the page differs depending on the “Orientation” setting in the [Paper] Tab (see “Orientation”).

●When the “Orientation” is set to “Portrait”:



●When the “Orientation” is set to “Landscape”:



③ [Special Printing]

Click on this button for printing with special settings such as printing even and odd pages separately, and managing the printing order.

The [Special Printing] screen appears. See the [Special Printing] screen.

④ Setting Confirmation Screen

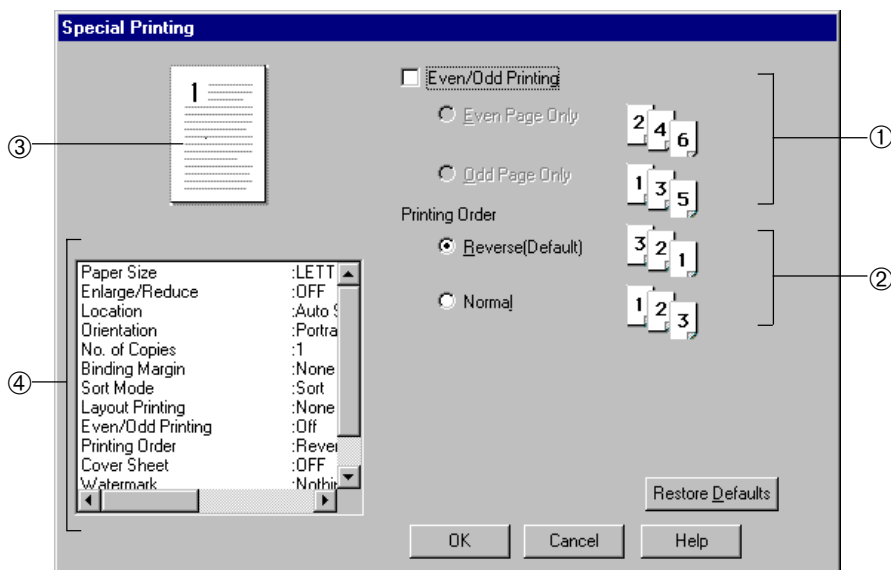
Displays the status of printing with the input settings as an illustration.

⑤ Setting Confirmation List

Displays the current settings for the printer driver.

[Special Printing] Screen

This screen appears when clicking on the [Special Printing] button in the [Output] tab. It allows setting of the Even/Odd Printing and the Printing Order.



① Even/Odd Printing

Check on this when you want to print only even pages or odd pages.

NOTE: It is checked off when shipped from the factory.

● Even Page Only

Print even pages of the document.

● Odd Page Only

Print odd pages of the document.

② Printing Order

Select the printing order to determine if the document will start printing from the last page or the first page.

NOTE: It is set to "Reverse" when shipped from the factory.

③ Setting Confirmation Screen

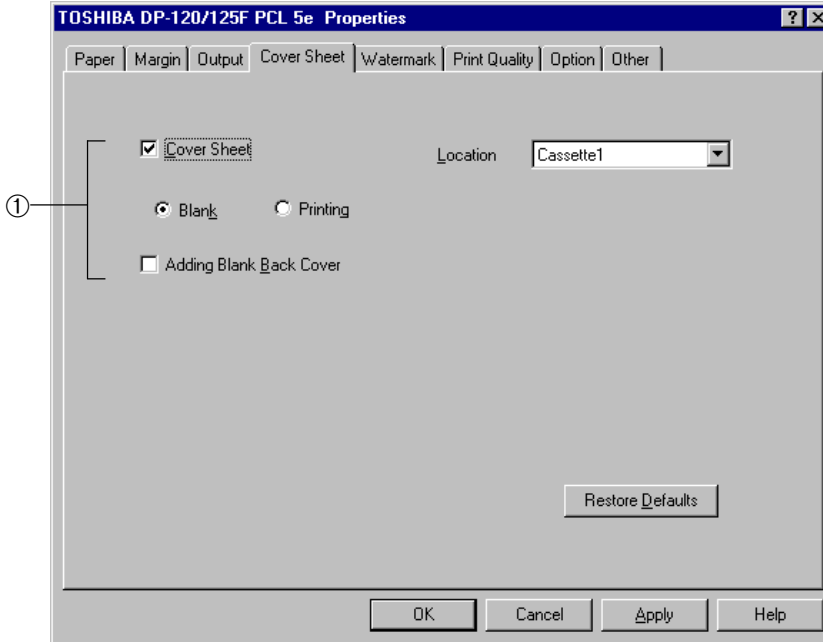
Displays the status of printing with the input settings as an illustration.

④ Setting Confirmation List

Displays the current settings for the printer driver.

[Cover Sheet] Tab

This tab page is used to add a blank cover sheet, back cover sheet, or print a first page on different paper fed from a selected location. This is useful when you want to add or print a cover page in different color of paper, and different size of paper.



① **Cover Sheet** (Grayed out when Layout Printing is selected)

Check this checkbox when a cover sheet is attached.

● **Blank**

Click on this radio button to add a blank sheet for a cover sheet. You can select the location to use different paper.

● **Printing**

Click on this radio button to print the first page of the document using different paper, fed from a selected location.

● **Location**

Selects the cassette that supplies paper for the cover sheet.

● **Adding Blank Back Cover**

Check this checkbox when a back cover sheet is added. The back cover sheet can be inserted as a blank sheet.

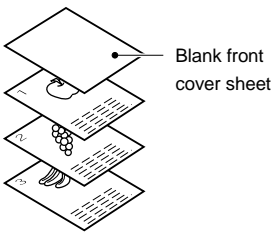
SUPPLEMENTS:

● Cover Sheet

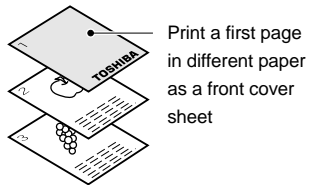
The cassette other than the cassette usually used is selected to supply paper for the first or last page attached as a front or back cover. The cover sheet can be inserted and printed.

Ex: 3 pages printed on one side of paper

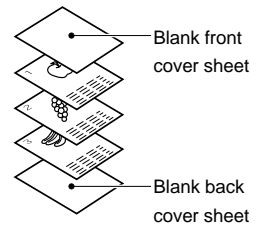
1) Front cover insertion



2) Front cover printing



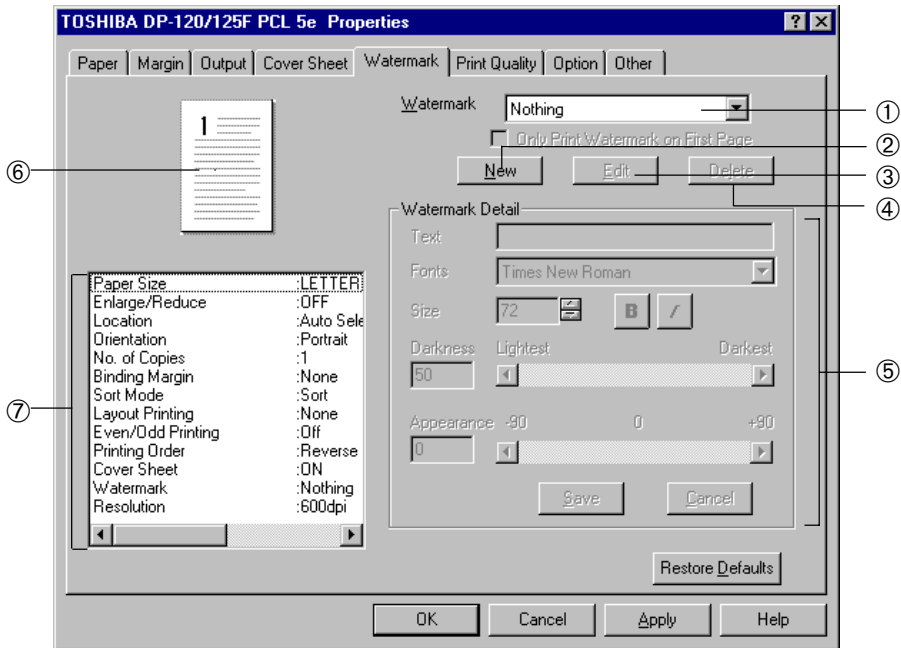
3) Front cover insertion and back cover insertion



[Watermark] Tab

This sets a Watermark printed over documents to be printed through applications.

A maximum of 30 different Watermarks (including “Nothing”) may be entered as watermark files.



① Watermark

This sets Watermarks to be used or edited.

For using a Watermark only on the first page, check the check box.

NOTE: It is set with “Nothing” when shipped from the factory.

● Nothing

Select this for not using any Watermark.

● Company Confidential

● Company Private

● Company Proprietary

● Confidential

● COPY

● Copyright

● Draft

● File Copy

● Final

● For Internal Use Only

● Preliminary

● Proof

● Review Copy

● Sample

● Top Secret

● Urgent

② [New]

Click on this for creating a new Watermark.

③ [Edit]

Click on this for editing a Watermark.

Click on it only when a Watermark to be edited has been selected.

④ [Delete]

Click on this for deleting the selected Watermark.

⑤ Watermark Detail screen

Settings here become enabled after clicking on the [New] or [Edit] buttons.

Details on Watermarks are set here.

See “The screen of Registration and Edit” .

⑥ Setting Confirmation Screen

Displays the status of printing with the input settings as an illustration.

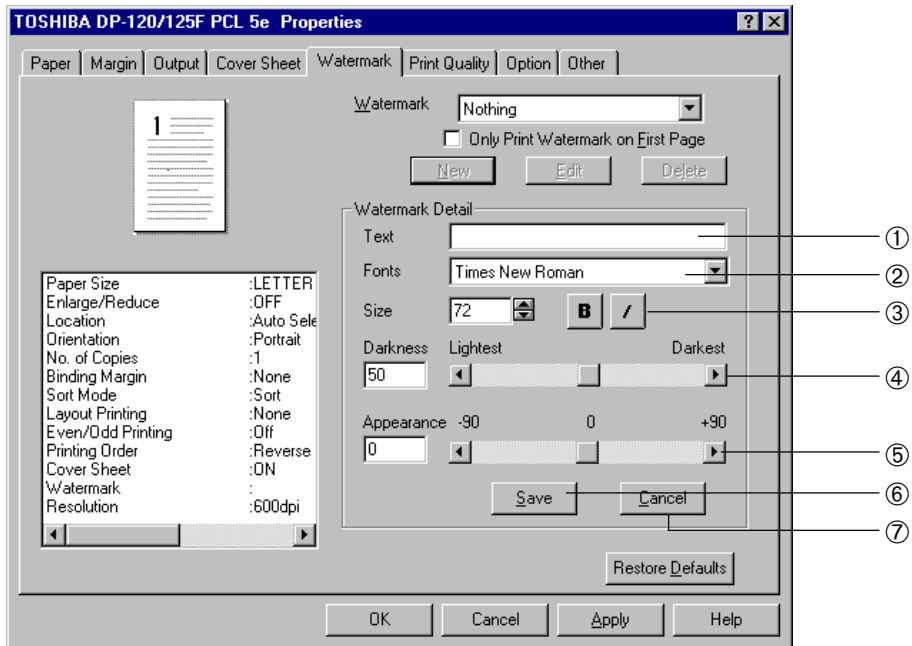
⑦ Setting Confirmation List

Displays the current settings for the printer driver.

NOTES:

- If the default Watermarks are deleted or edited, they cannot be restored.
- The Watermark is set to “nothing” by clicking on [Restore Defaults].
A Watermark that has been deleted or edited cannot be restored to the default settings by the [Restore Defaults] button.

The Screen of Registration and Edit (Watermark Entry/Edit Screen)



① Text

Inputs and displays the name of the Watermark to be created or edited.

② Fonts

This sets the font for the Watermark to be created or edited.

③ Size

This sets the font size for the Watermark to be created or edited.

The size value can be set in the range of 8 to 400 pt in units of 1 pt.

Each font can further be set with its font style of Bold and Italic.

NOTE: It is set with "72 pt" when shipped from the factory.

④ Darkness

This sets shading (darkness) of the Watermark to be created or edited.

The shading can be set in a range from 0 (lightest) to 100 (darkest) in units of 1 point.

NOTE: "50" is selected when shipped from the factory.

⑤ Appearance

This sets the appearance (angle) of the Watermark to be created or edited.

The appearance can be set in a range from -90 degrees to 90 degrees in units of 1 degree.

NOTE: "0 degree (horizontal)" is selected when shipped from the factory.

⑥ **[Save]**

Click on this to enter a new Watermark or to enter edited Watermark settings.

⑦ **[Cancel]**

Click on this to cancel the procedure for creating or editing a Watermark.

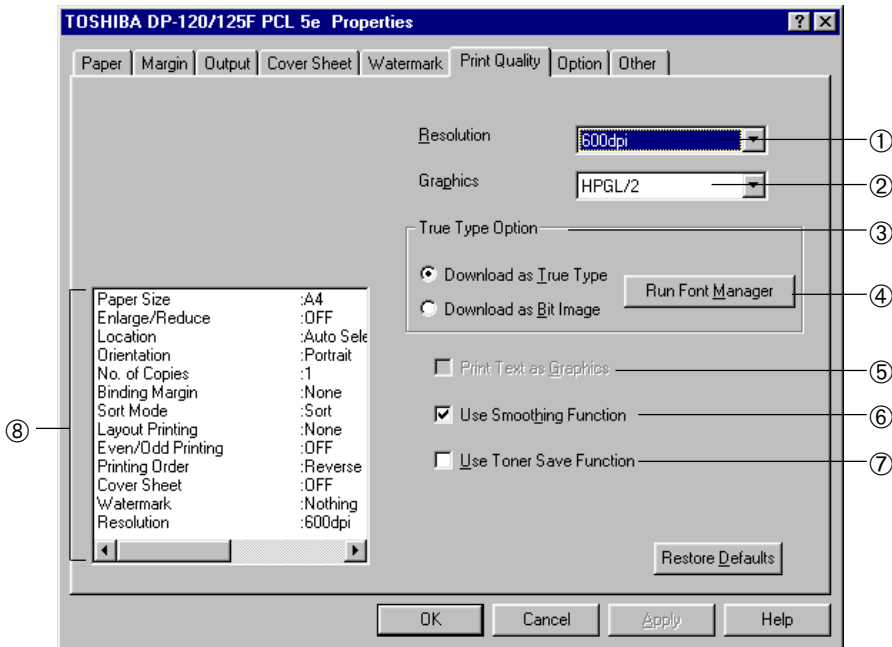
[Print Quality] Tab

This sets properties to the printing quality.

Settings are for grayscale, graphic mode, bitmap compression, Font Manager starting, TrueType fonts and Smoothing process.

The screen will differ depending on the driver. The following shows a description for each driver.

For the PCL-5e Driver



① Resolution

This sets the resolution for printing.

NOTE: It is set with "600dpi" when shipped from the factory.

- 600dpi

Select this to print documents with an emphasis on resolution over speed.

- 300dpi

Select this to print documents with an emphasis on speed over resolution.

② Graphics

This designates which configuration is used for sending the graphics information to the printer.

NOTE: It is set with "HPGL/2" when shipped from the factory.

- Raster

This prints all the graphics as raster images.

- This cannot be set when "Layout printing" is set at the Output tab.

- HPGL/2

This prints some geometrical patterns faster.

- When "HPGL/2" is selected, the "Print Text as Graphics" is not available.

③ TrueType Options

This sets TrueType fonts to be used for printing.

NOTE: It is set with “Download as TrueType” when shipped from the factory.

- Download as TrueType

TrueType fonts are downloaded as software fonts, which makes the print speed faster.

- Download as Bit Image

TrueType fonts are converted to images before printing, which makes the print speed slower.

④ [Run Font Manager]

Click on this to start the AGFA Font Manager.

⑤ Print Text as Graphics

Check this checkbox to print text as graphics.

This setting is available when “Raster” is selected in Graphics.

⑥ Use Smoothing Function

Check this checkbox when the smoothing function is to be used.

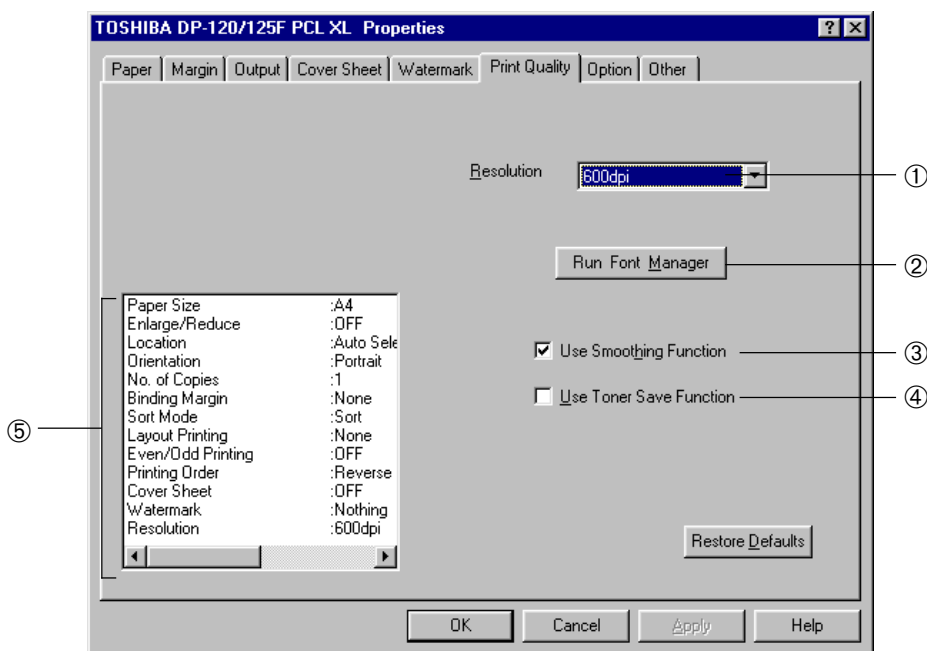
⑦ Use Toner Save Function

Check this checkbox when the toner save function is to be used.

⑧ Setting Confirmation List

Displays the current settings for the printer driver.

For the PCL-XL Driver



① Resolution

This sets the resolution for printing.

NOTE: It is set with "600dpi" when shipped from the factory.

● 600dpi

Select this to print documents with an emphasis on resolution over speed.

● 300dpi

Select this to print documents with an emphasis on speed over resolution.

② [Run Font Manager]

Click on this to start the AGFA Font Manager.

③ Use Smoothing Function

Check this checkbox when the smoothing function is to be used.

④ Use Toner Save Function

Check this checkbox when the toner save function is to be used.

⑤ Setting Confirmation List

Displays the current settings for the printer driver.

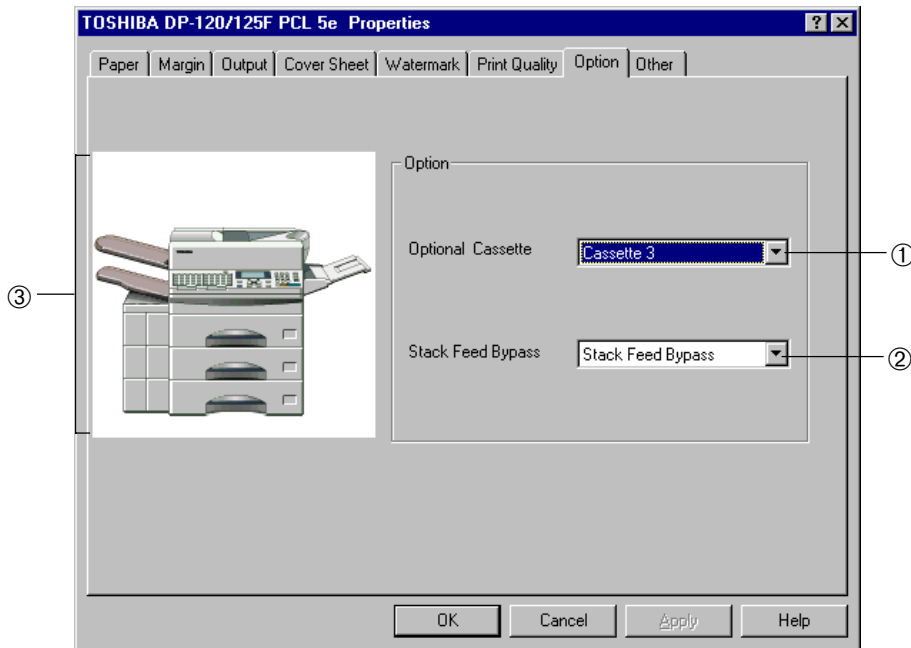
[Option] Tab

This tab sets whether optional devices for this printer are installed or not.

Items to be set depend on the options configuration. It is recommended that such items be set before printing or setting the [Other] tab page.

SUPPLEMENTS:

- If you do not know the options configuration for the machine, you can see the information about the installed options on the [Configuration] Tab of the Printer Settings dialog using the TOSHIBA Status Display. For further details about the TOSHIBA Status Display refer to the section “TOSHIBA STATUS DISPLAY FUNCTION” in this manual.
- If your DP120F/125F is connected to a network, you can see the information for installed options by the NetPanel. Ask your administrator for the URL of using NetPanel. For further details about NetPanel and the tray properties, refer to the section “NETPANEL FUNCTION” in OPERATOR’S MANUAL/FOR PRINTER FUNCTION - Network Setup.



① Optional Cassette

This selects how the optional cassettes are installed.

NOTE: “Not Install” is selected when shipped from the factory.

- Not Install

Select this when no optional cassette is installed.

- Cassette 2

Select this when the optional Lower Recording Paper Tray is installed.

- Cassette 3

Select this when the optional Middle Recording Paper Tray and the optional Lower Recording Paper Tray are installed.

② Stack Feed Bypass

This selects how the Bypass Tray is installed.

NOTE: "Not Install" is selected when shipped from the factory.

- Not Install

Select this when no optional cassette is installed.

- Stack Feed Bypass

Select this when the Bypass Tray is installed.

SUPPLEMENT:

If your computer is running Windows NT 4.0, it is necessary to log on with "Administrators" or "Power Users" group privileges to setup the "Option." Refer to the Windows NT Manual for log-on details.

NOTE:

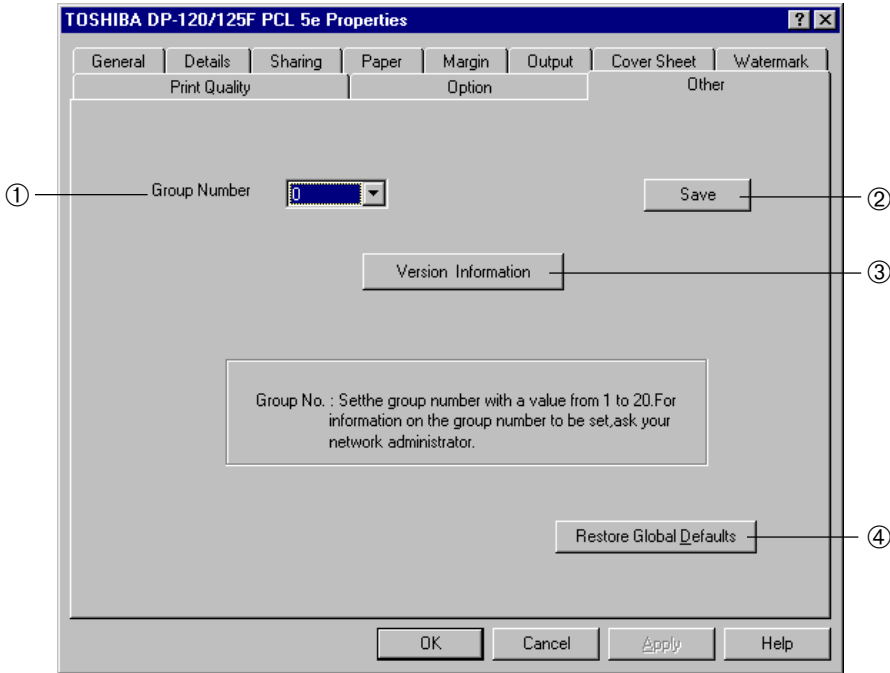
If you want to use the Bypass tray to print, please enable the Bypass setting on the printer's Operation Panel. To set the Bypass Setting on the Operation Panel, see "OPERATING ON THE OPERATION PANEL - BYPASS SETTING."

③ Optional Device Installed Status

The status of optional cassettes and the Bypass Tray are indicated in the illustration.

[Other] Tab

Displays the entered Group Numbers, and information on the version.



① Group Number

Displays the Group Number entered at the time of installing the printer driver.

Otherwise the Group Number can be entered or selected on this tab when the printer driver is installed by the Add Printer wizard.

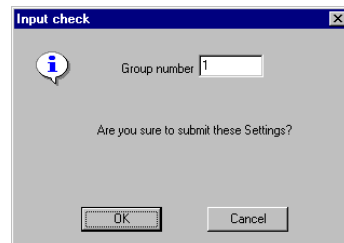
② Save

Click this button to save the Group Number that you assigned.

When you click this button, the Input check screen appears.

Click [OK] to submit the setting.

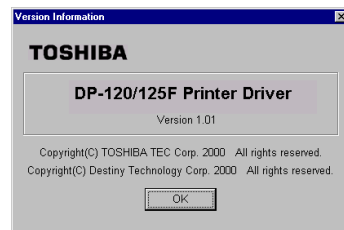
This is not available if you have already set the Group Number.



③ [Version Information]

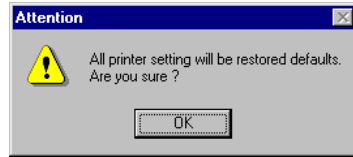
Click on this to display information on the version.

The version information screen at right appears.



④ [Restore Global Defaults]

Settings for the Printer Properties are set to the defaults except Group Number, Saved Watermarks, and Option Tab Page.



TOSHIBA STATUS DISPLAY FUNCTION

STARTING TOSHIBA STATUS DISPLAY

The TOSHIBA Status Display can monitor the printer status, whenever certain events occur on the printer, such as paper jam, paper out and so on. Users can also set the printer configuration information through the system.

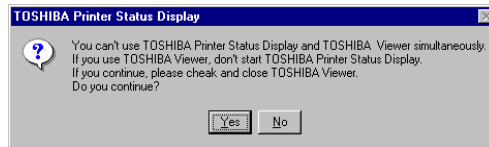
Environmental Requirements

The TOSHIBA Status Display can be used in the following environment:

- Applicable OS : Windows 95, Windows 98, Windows NT4.0
- Local I/F : IEEE1284 (Compatible mode, ECP)
- BIOS Setting : ECP enabled

NOTES:

- The TOSHIBA Status Display cannot be operated when your printer is connected in a network environment.
- The TOSHIBA Status Display cannot be operated when the TOSHIBA Viewer is running on your PC. Everytime you start the Status Display, the alert message will be displayed. Please make sure to exit the TOSHIBA Viewer before you start the Status Display and click on [Yes] to start the Status Display.



SUPPLEMENT:

If the TOSHIBA Status Display cannot be operated, ensure the following details are satisfied:

- Using the right cable to connect the printer and your computer. Refer to "SPECIFICATION, OPTIONS, AND OTHERS - PRINTER CABLE SPECIFICATIONS."
- The ECP setting in the BIOS of your computer is enabled.

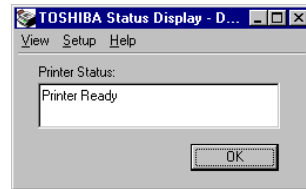
The Status Display will automatically start if you clicked [Yes] at the prompt that asked you whether the Status Display will automatically start during the installation. If you clicked [No] at the prompt, select the shortcut to the TOSHIBA Status Display in the TOSHIBA DP120&125F folder in Programs from the Start menu to start the TOSHIBA Status Display.

Type of Screen

The TOSHIBA Status Display has three types of the screen views.

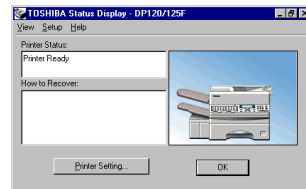
● Reduce View

This screen only displays the printer status. To display this screen, select Reduce on the View menu. When you first start the TOSHIBA Status Display this screen appears.



● ExPand View

This screen displays the printer status, how to recover if any problems occur, and the image of the printer status. To display this screen, select ExPand on the View menu.



● Icon View

The TOSHIBA Status Display icon is displayed on the status area of the Task bar. The icon color will change according to the printer status.

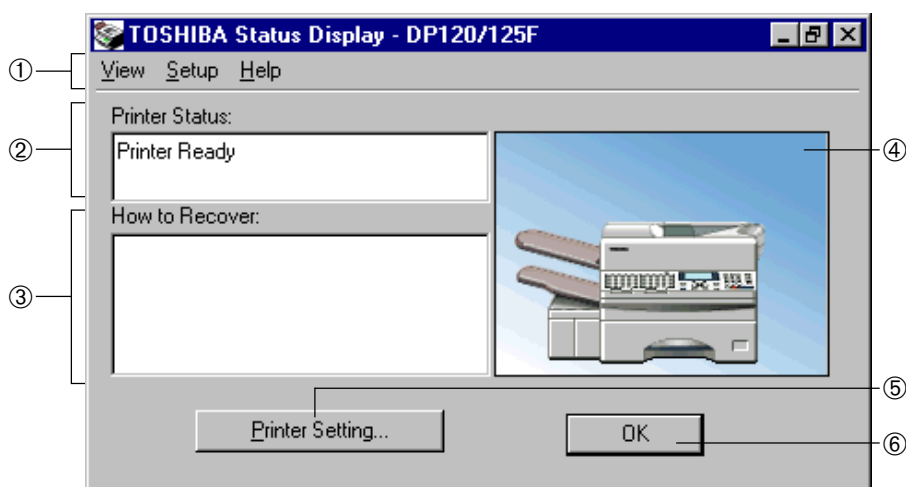


- Blue: The printer detects no error or warning.
- Yellow: The printer detects warnings.
- Red: The printer detects errors.

SUPPLEMENT:

If the icon color is either yellow or red, view the TOSHIBA Status Display in ExPand view and see the printer status and how to recover to solve the problems. Refer to "TROUBLESHOOTING - WHEN AN ERROR MESSAGE IS DISPLAYED..." for further details about the printer status.

Description of Screens



① Menus

Menus to operate the TOSHIBA Status Display.

● View menu

- Expand View the TOSHIBA Status Display in ExPand view mode.
- Reduce View the TOSHIBA Status Display in Reduce view mode.
- Exit Exit the TOSHIBA Status Display.

● Setup menu

- Printer Setting... Set up the printer configuration. Printer Setting screen appears.
- Communication Reset Reset and reconnect the communication between the computer and the printer.

● Help menu

- Help View the Help topic.
- About View the Version Information screen.

② Printer Status

Display the status of the printer.

③ How to Recover

Display the message that indicates the solutions when something occurs.

④ Status Bitmap

Display the image that indicates the printer status.

⑤ [Printer Setting...]

Click this button to set up the printer configuration. The Printer Setting screen appears.

⑥ [OK]

Minimize the TOSHIBA Status Display. The TOSHIBA Status Display icon remains on the status area of the Task bar.

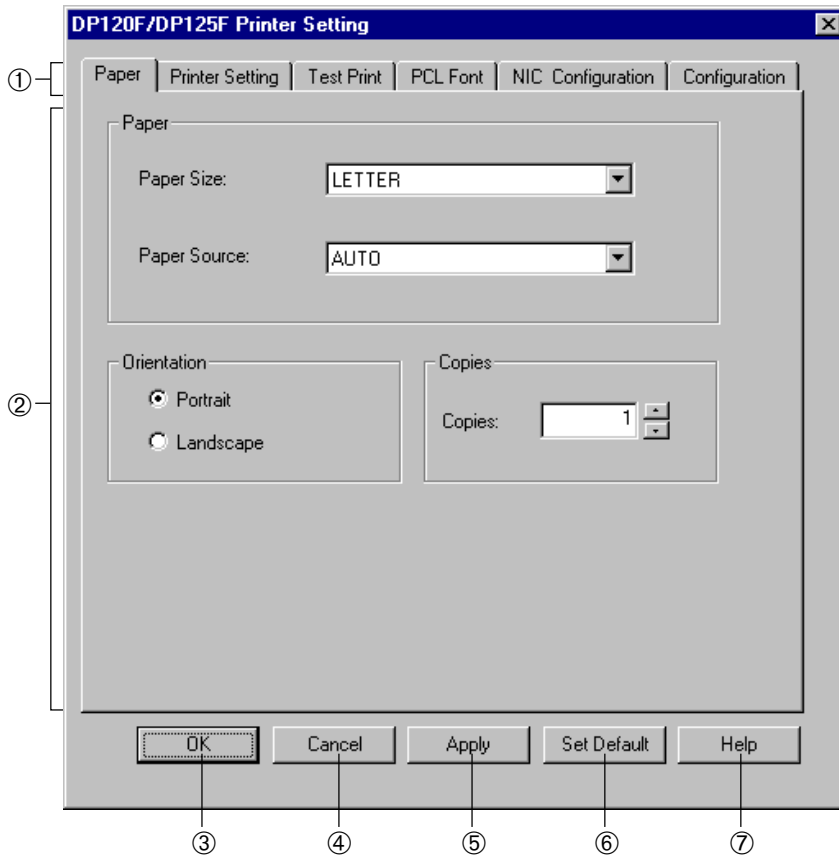
PRINTER SETTING

You can configure your printer settings using the TOSHIBA Status Display.

NOTE:

Please make sure that your DP120F/DP125F is correctly connected to your computer and the printer status of the TOSHIBA Status Display indicates the connection is active.

Screen Details



① Item Tabs

The setting menu items for the printer properties are displayed as tabs. The setting contents for a particular tab can be displayed by clicking on the tab.

② Setting Contents

Setting contents for each selected tab are displayed. For further details, see the instructions for each tab on the following pages.

③ [OK]

Click on this to enter the input values and complete the printer setting.

④ **[Cancel]**

Click on this to cancel the input values and exit the printer setting.

⑤ **[Apply]**

Click on this to enter the input values.

⑥ **[Set Default]**

Click on this to return the setting contents to the original factory default values.

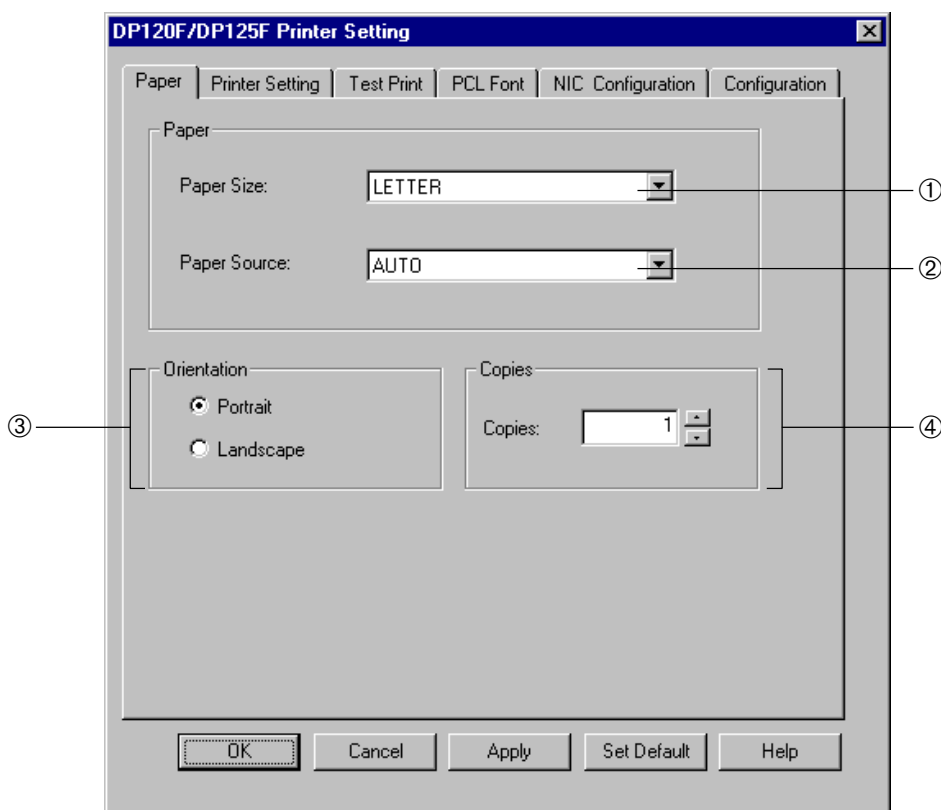
⑦ **[Help]**

Click on this when you want to see the HELP texts for the printer settings.

[Paper] Tab

This sets the paper properties for printing. The settings are only applied when printing is performed without the printer driver.

Setting items are for the paper size, paper source, destination, number of copies, and orientation.



① Paper Size

This selects the size of paper used for printing.

- A4
- A5
- B5
- LEGAL
- LETTER
- STATEMENT
- FOLIO
- MONARCH
- COM10

NOTES:

When the Bypass Tray is not installed to your DP120F/DP125F, only A4, LEGAL and LETTER are available for the Paper Size.

② Paper Source

This selects the paper feed source for printing. If several different paper sizes are loaded into different paper sources, select the paper feed method which will use paper of an appropriate size.

NOTE: It is set with "AUTO" when shipped from the factory.

- AUTO

Automatically selects paper from the tray corresponding to the appropriate paper size.

- CASSETTE1

Feeds paper from the Upper Recording Paper Tray.

- CASSETTE2 (Optional)

Feeds paper from the Middle Recording Paper Tray.

- CASSETTE3 (Optional)

Feeds paper from the Lower Recording Paper Tray.

- STACK FEED BYPASS (Standard for DP125F and Optional for DP120F)

Paper is fed from the Bypass Tray.

③ Orientation

This sets the paper printing direction, to either "Portrait" or "Landscape."

NOTE: It is set to "Portrait" when shipped from the factory.

④ Copies

This sets the number of printed copies.

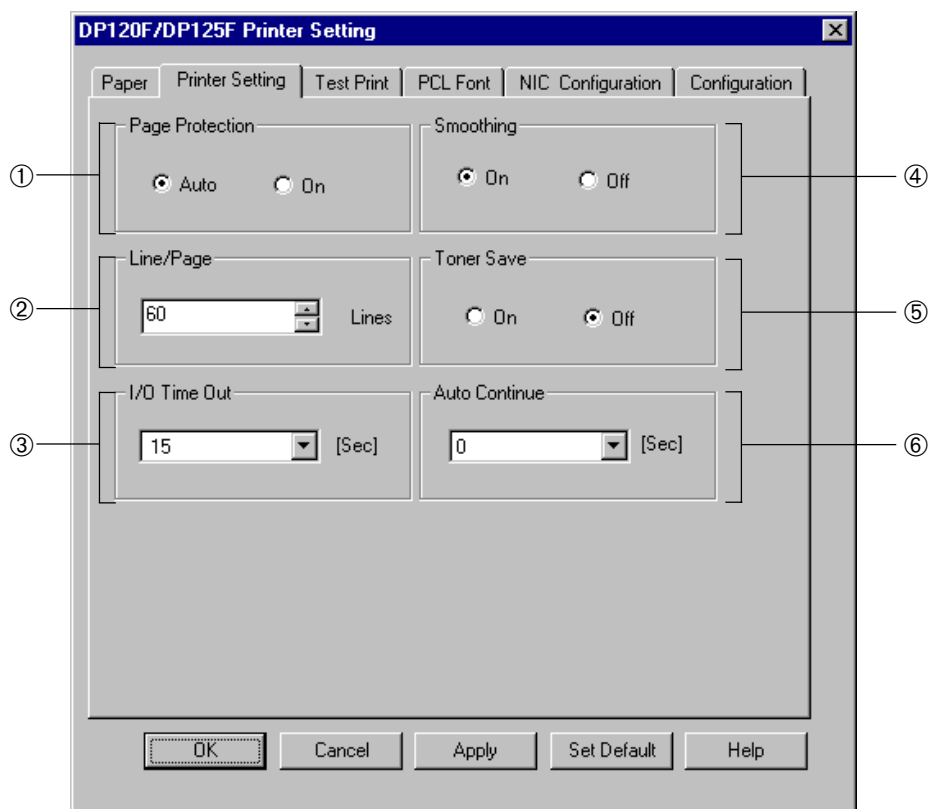
You can set any integer in the range from 1 to 999.

NOTE: It is set with "1" when shipped from the factory.

[Printer Setting] Tab

This configures the printer settings. The settings are only applied when printing is performed without the printer driver.

Setting items are for the page protection, line/page, toner save, I/O time out, auto continue, and smoothing.



① Page Protection

This sets the page protection function. A data overrun error may occur during the printing operation when there is a large amount of printing data in a page, because the system cannot analyze the data in time and stop the printing. Page protection reserves additional memory and waits until the page is fully composed before starting the print operation in order to avoid a data overrun error.

- Auto The printer analyzes each page and turns on page protection automatically only when it is required.
- On The printer always keeps sufficient memory reserved to ensure that a page can be fully composed.

② Line/Page

Select the number of lines which can be printed on one page. This only applies when printing text documents from an application which does not utilize a page setup feature. (i.e. The text is printing from MS-DOS.)

NOTE: It is automatically set depending on the paper size.

The Default of Line/Page depending on the Paper Sizes

Orientation Paper Size	Portrait	Landscape
A4	64	43
A5	43	28
B5	53	36
FOLIO	71	43
LEGAL	78	45
LETTER	60	45
STATEMENT	45	27
MONARCH	39	17
COM10	51	18

③ I/O Time Out

This sets the time out interval that the printer will wait if there is an interruption while receiving a print job. The Auto Continue setting determines what the printer will do next after the time out value is reached.

NOTE: It is set with "15" when shipped from the factory.

④ Smoothing

This setting enables/disables the Smoothing feature. This is only applied when printing is performed without the printer driver.

NOTE: It is set with "On" when shipped from the factory.

⑤ Toner Save

This setting enables/disables the Toner Saving feature. This is only applied when printing is performed without the printer driver.

NOTE: It is set to "Off" when shipped from the factory.

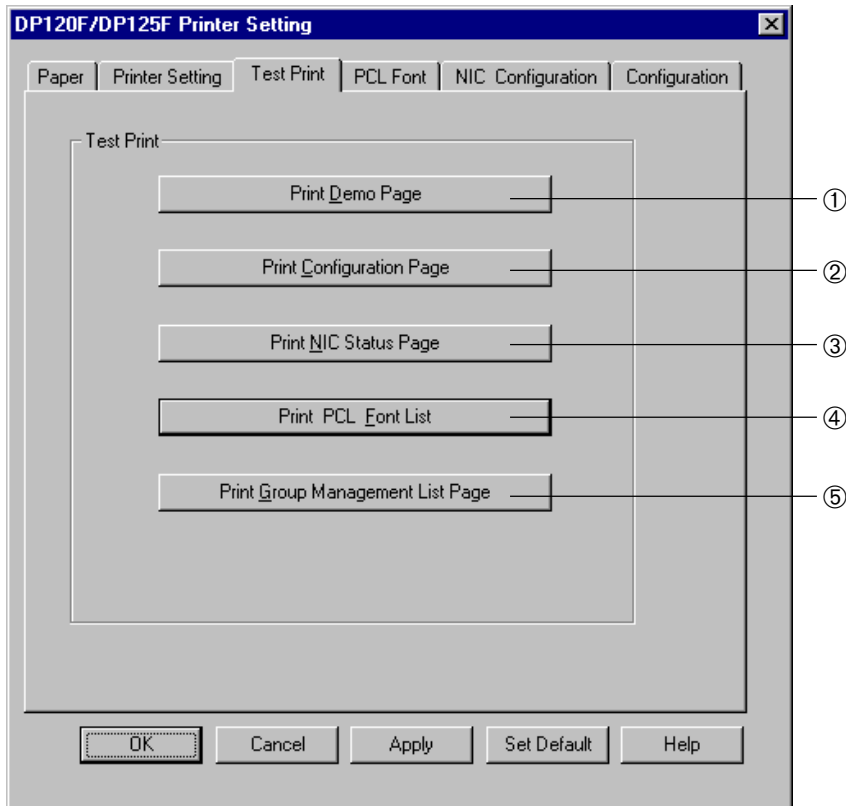
⑥ Auto Continue

This sets the duration for which the printer will automatically attempt to recover from a print job error.

NOTE: It is set to "0" when shipped from the factory.

[Test Print] Tab

This operates the test printing.



① Print Demo Page

Click this to print a page that demonstrates the features and functions of the printer.

② Print Configuration Page

Click this to print a page that describes the printer's current settings.

③ Print NIC Status Page

Click this to print a page that describes the printer's NIC status. This is not available when the optional NIC is not installed in your DP120F/DP125F.

④ Print PCL Font List

Click this to print a page that lists the printer's PCL fonts.

⑤ Print Group Management List Page

Click this to print a page that lists the printer's current group counts for each group.

The followings are the samples for the Test Print.

● Demo Page

TOSHIBA

DP120/125F

Demo Page

■ High-speed printing

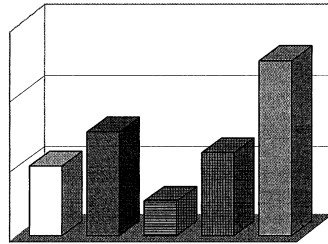
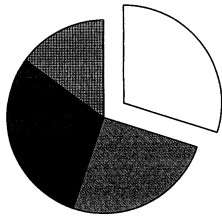
The PowerPC401 (75MHz) processor provides high-speed printing of complicated data.

■ High quality printing

Offers 600 X 600 dpi resolution to respond to the needs for high quality image printing For word processing, DTP, and CAD.

■ Various options

A wide variety of options, provides scalability according to users' applications.



Outline Font
ONQING LOW

Direction

Area Fill
FILL MODE

- Courier
- CG Times
- Antique Olive
- Albertus Medium
- Garamond
- Helvetica Bold
- ITC Avant Grade Gothic Book
- New Century Schoolbook Roman
- ☎)(■)ⓂⓂ)(■)ⓂⓂ
- ITC Zapf Dingbaats
- Letter Gothic Bold
- Line Printer

● Configuration Page

TOSHIBA
DP120/125F

Configuration Page

Paper Setting

Paper Size
 Cassette 1 = A4
 Cassette 2 =
 Cassette 3 =
 Stack Feed Bypass =
 Paper Source = Automatic
 Copies = 1
 Orientation = Portrait

Printer Setting

Page Protection = AUTO
 Line/Page = 64
 I/O Time Out = 15 sec
 Smoothing = ON
 Toner Save = OFF
 Auto Continue = 0 sec

Font Setting

Font Size = 12.00pt
 Font Pitch = 10.00cpi
 Symbol Set = PC-8
 Typeface = Courier

Configuration

Network Card = Not Installed
 Total Memory = 8 MB
 Total Page Count = 977

Version

Controller F/W Version = Q.C3.02 (0517)

Network

TCP/IP =
 DHCP =
 IP Address =
 Subnetmask =
 Default Gateway =
 IPX/SPX =
 Frame Type =
 Apple Talk =

Option

Cassette 2 = Not Installed
 Cassette 3 = Not Installed
 Stack Feed Bypass = Disable

● NIC Status Page

```
-----  
Unit Serial No: 000074                      Version: 09.08  
Network Address: 00:80:91:20:00:4a  
Network Topology: Ethernet                   Connector: RJ45  
Network Speed: 10 Megabits  
Novell Network Information                   enabled  
  Print Server Name: MFP_000074  
  Password Defined: No  
  Preferred Server Name not defined  
  Directory Services Context not defined  
  Frame Type: 802.2 On 802.3  
Peer-to-Peer Information                     enabled  
  Frame Type: 802.2 On 802.3  
  Network ID: 71c6b162 h  
TCP/IP Network Information                   enabled  
  Frame Type: Ethernet II                   Protocol Address: Not Configured  
  Subnet Mask: 255.0.0.0                     Default Gateway: 0.0.0.0  
  DNS Address: 0.0.0.0  
  WINS Name: MFP_000074  
IPP Network Information                       enabled  
  Internet Printing Protocol                 http://0.0.0.0:631/Print  
AppleTalk Network Information                disabled  
-----  
Novell inactive  
Peer-to-Peer Connection Information  
  Printer Name: MFP_000074  
AppleTalk Inactive  
TCP/IP Connection Information  
  Port Number : 10001  
-----
```

● PCL Font List 1

TOSHIBA
DP120/125F

PCL Font List 1

Internal Scalable and Bitmapped Fonts

Font Number	Typeface	Pitch/Point	Escape Sequence
000	Courier	Scale	<esc>###<esc>(sOp***h0s0b4099T
001	CG Times	Scale	<esc>###<esc>(s1p\$\$\$v0s0b4101T
002	CG Times Bold	Scale	<esc>###<esc>(s1p\$\$\$v0s3b4101T
003	<i>CG Times Italic</i>	Scale	<esc>###<esc>(s1p\$\$\$v1s0b4101T
004	CG Times Bold Italic	Scale	<esc>###<esc>(s1p\$\$\$v1s3b4101T
005	CG Omega	Scale	<esc>###<esc>(s1p\$\$\$v0s0b4113T
006	CG Omega Bold	Scale	<esc>###<esc>(s1p\$\$\$v0s3b4113T
007	<i>CG Omega Italic</i>	Scale	<esc>###<esc>(s1p\$\$\$v1s0b4113T
008	CG Omega Bold Italic	Scale	<esc>###<esc>(s1p\$\$\$v1s3b4113T
009	<i>Coronet</i>	Scale	<esc>###<esc>(s1p\$\$\$v1s0b4116T
010	Clarendon Condensed	Scale	<esc>###<esc>(s1p\$\$\$v4s3b4140T
011	Univers Medium	Scale	<esc>###<esc>(s1p\$\$\$v0s0b4148T
012	Univers Bold	Scale	<esc>###<esc>(s1p\$\$\$v0s3b4148T
013	<i>Univers Medium Italic</i>	Scale	<esc>###<esc>(s1p\$\$\$v1s0b4148T
014	Univers Bold Italic	Scale	<esc>###<esc>(s1p\$\$\$v1s3b4148T
015	Univers Medium Condensed	Scale	<esc>###<esc>(s1p\$\$\$v4s0b4148T
016	Univers Bold Condensed	Scale	<esc>###<esc>(s1p\$\$\$v4s3b4148T
017	<i>Univers Medium Condensed Italic</i>	Scale	<esc>###<esc>(s1p\$\$\$v5s0b4148T
018	Univers Bold Condensed Italic	Scale	<esc>###<esc>(s1p\$\$\$v5s3b4148T
019	Antique Olive	Scale	<esc>###<esc>(s1p\$\$\$v0s0b4168T
020	Antique Olive Bold	Scale	<esc>###<esc>(s1p\$\$\$v0s3b4168T
021	<i>Antique Olive Italic</i>	Scale	<esc>###<esc>(s1p\$\$\$v1s0b4168T
022	Garamond Antiqua	Scale	<esc>###<esc>(s1p\$\$\$v0s0b4197T
023	Garamond Halbfett	Scale	<esc>###<esc>(s1p\$\$\$v0s3b4197T
024	<i>Garamond Kursiv</i>	Scale	<esc>###<esc>(s1p\$\$\$v1s0b4197T
025	Garamond Kursiv Halbfett	Scale	<esc>###<esc>(s1p\$\$\$v1s3b4197T
026	<i>Marijgold</i>	Scale	<esc>###<esc>(s1p\$\$\$v0s0b4297T
027	Albertus Medium	Scale	<esc>###<esc>(s1p\$\$\$v0s1b4362T
028	Albertus Extra Bold	Scale	<esc>###<esc>(s1p\$\$\$v0s4b4362T
029	Arial	Scale	<esc>###<esc>(s1p\$\$\$v0s0b16602T
030	Arial Bold	Scale	<esc>###<esc>(s1p\$\$\$v0s3b16602T
031	<i>Arial Italic</i>	Scale	<esc>###<esc>(s1p\$\$\$v1s0b16602T
032	Arial Bold Italic	Scale	<esc>###<esc>(s1p\$\$\$v1s3b16602T
033	Times New	Scale	<esc>###<esc>(s1p\$\$\$v0s0b16901T
034	Times New Bold	Scale	<esc>###<esc>(s1p\$\$\$v0s3b16901T

Symbol set, *** Pitch : .10 - 576, \$\$\$ Point Size : .25 - 999.75

● PCL Font List 3

TOSHIBA
DP120/125F

PCL Font List 3

Internal Scalable and Bitmapped Fonts

Font Number	Typeface	Pitch/Point	Escape Sequence
070	Courier Bold	Scale	<esc>{###<esc>(s0p***h0s3b4099T
071	<i>Courier Italic</i>	Scale	<esc>{###<esc>(s0p***h1s0b4099T
072	Courier Bold Italic	Scale	<esc>{###<esc>(s0p***h1s3b4099T
073	Letter Gothic	Scale	<esc>{###<esc>(s0p***h0s0b4102T
074	Letter Gothic Bold	Scale	<esc>{###<esc>(s0p***h0s3b4102T
075	<i>Letter Gothic Italic</i>	Scale	<esc>{###<esc>(s0p***h1s0b4102T
076	CourierPS	Scale	<esc>{###<esc>(s0p***h0s0b24579T
077	CourierPS Bold	Scale	<esc>{###<esc>(s0p***h0s3b24579T
078	<i>CourierPS Oblique</i>	Scale	<esc>{###<esc>(s0p***h1s0b24579T
079	CourierPS Bold Oblique	Scale	<esc>{###<esc>(s0p***h1s3b24579T
080	Line Printer	16.67/8.5	<esc>(0N<esc>(s0p16.67h8.5v0s0b0T
081	Line Printer	16.67/8.5	<esc>(1U<esc>(s0p16.67h8.5v0s0b0T
082	Line Printer	16.67/8.5	<esc>(2N<esc>(s0p16.67h8.5v0s0b0T
083	Line Printer	16.67/8.5	<esc>(3R<esc>(s0p16.67h8.5v0s0b0T
084	Line Printer	16.67/8.5	<esc>(5N<esc>(s0p16.67h8.5v0s0b0T
085	Line Printer	16.67/8.5	<esc>(6N<esc>(s0p16.67h8.5v0s0b0T
086	Line Printer	16.67/8.5	<esc>(8U<esc>(s0p16.67h8.5v0s0b0T
087	Line Printer	16.67/8.5	<esc>(10U<esc>(s0p16.67h8.5v0s0b0T
088	Line Printer	16.67/8.5	<esc>(11U<esc>(s0p16.67h8.5v0s0b0T
089	Line Printer	16.67/8.5	<esc>(12U<esc>(s0p16.67h8.5v0s0b0T

Symbol set, *** Pitch : .10 - 576, \$\$\$ Point Size : .25 - 999.75

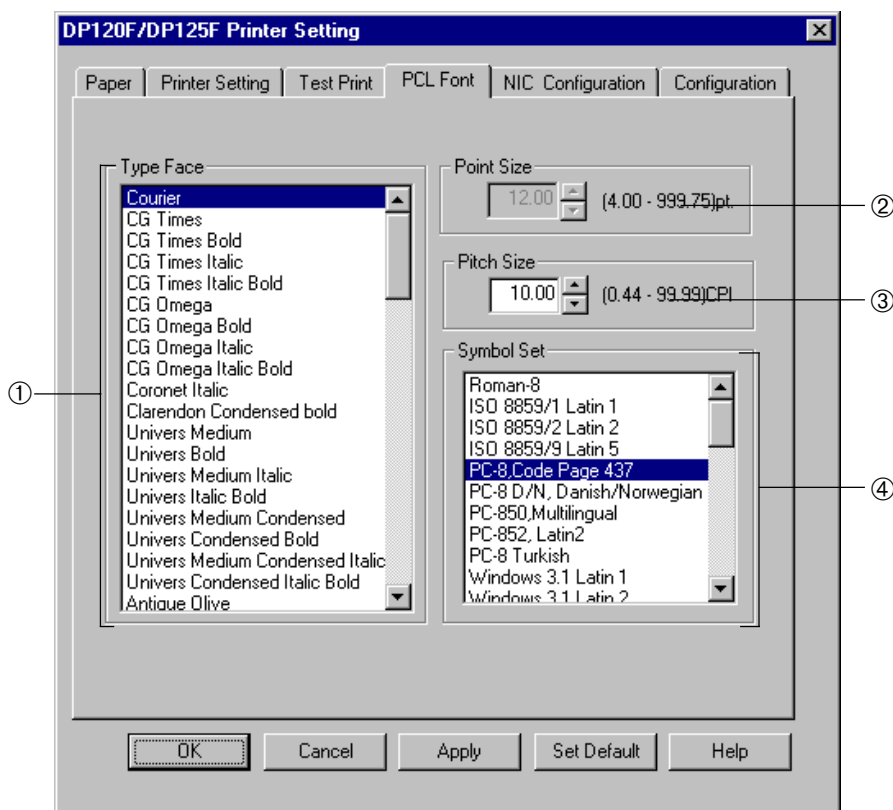
● Group Management List Page

TOSHIBA
DP120/125F Group Management List Page

Group Number	Print Number
1	10748114
2	66
3	0
4	0
5	0
6	0
7	0
8	0
9	0
10	0
11	0
12	0
13	0
14	0
15	0
16	0
17	0
18	0
19	0
20	0
Other	838861156
Total Page Count	849609336

[PCL Font] Tab

This sets the PCL font and Symbol Set to be used to print text when no font has been assigned. (i.e. The text is printed from MS-DOS.)



① Type Face

Select the font to use for printing.

② Point Size

This sets the point size for the selected font. This is available when the proportional font is selected at Type Face.

③ Pitch Size

This sets the pitch size for the selected font. This is available when the non-proportional font is selected at Type Face.

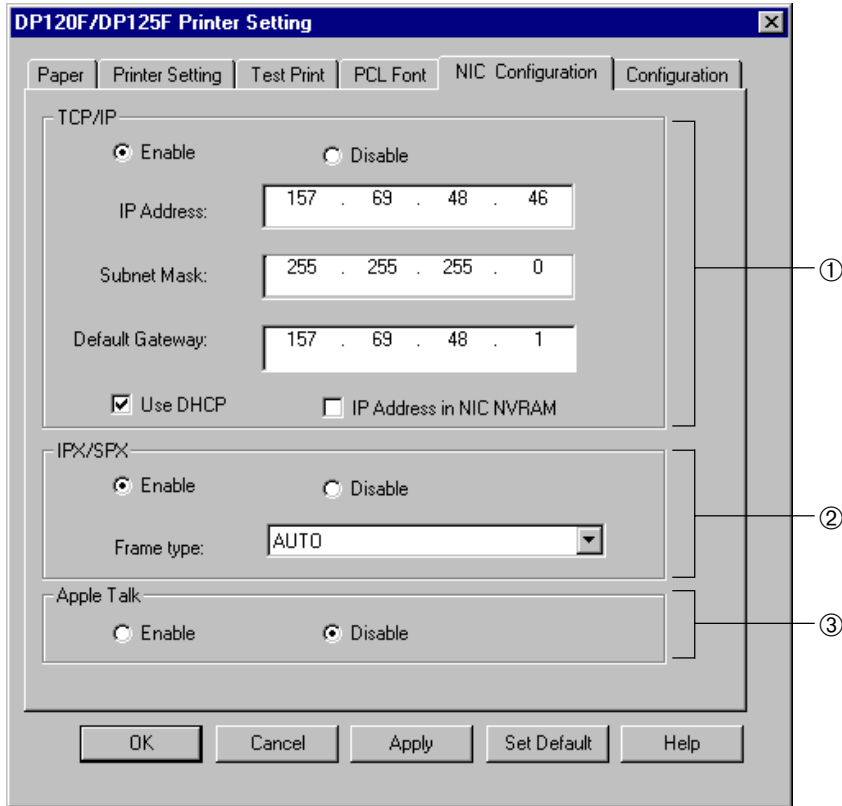
④ Symbol Set

Select the Symbol Set to use for printing.

[NIC Configuration] Tab

This sets the configuration for the Network Interface Card. You can set TCP/IP, IP address, Subnetmask, Default gateway, IPX/SPX, and frame type.

This is only available when the optional NIC kit (GF-1010) is installed in your DP120F/DP125F.



① TCP/IP

Set the TCP/IP configuration.

- Enable/Disable

Select enable or disable the TCP/IP.

- IP Address

This sets the IP address of the NIC.

- Subnetmask

This sets the Subnet Mask of the NIC.

- Default Gateway

This sets the Default Gateway for the NIC.

- Use DHCP

Check this to obtain the IP address automatically from the DHCP server.

- IP Address in NIC NVRAM

Check this to save an IP address that was obtained from a DHCP server.

SUPPLEMENT:

TCP/IP cannot be set to “Disable” when the PCL Print kit (GA-1020) is installed.

② **IPX/SPX**

Set the IPX/SPX configuration.

- **Enable/Disable**

Select enable or disable the IPX/SPX.

- **Frame type**

Select this to set the frame type from AUTO, 8022, 8023, ETHERNET or 8023SNAP.

③ **Apple Talk**

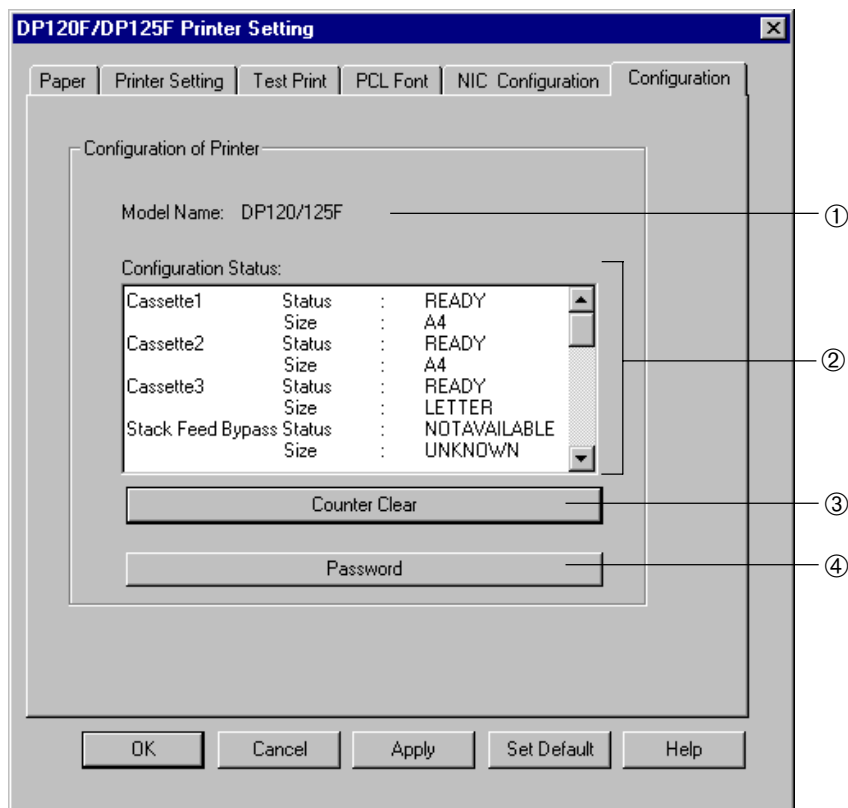
Select enable or disable to connect through AppleTalk protocol.

NOTE:

After you modify the settings, please turn off the power and restart the DP120F/125F.

[Configuration] Tab

This displays the configuration status for the printer, and allows you to clear the print counter and set the password for the group.



① Printer Name

The printer name is displayed.

② Configuration Status

The configuration status for the printer is displayed.

③ Counter Clear

Click this to clear the print counter for a group.

④ Password

Click this to set or change the print counter password.

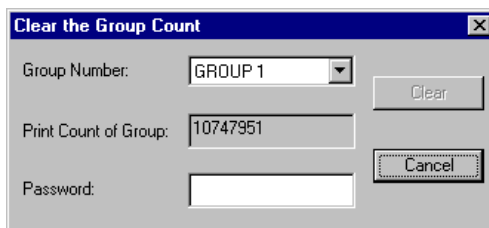
Clearing Print Counter

- 1 **Click on [Counter Clear].**
 - The [Clear the Group Count] screen appears.



- 2 **Select Group Number and enter the password.**

- If you have not set the printer counter password, move the cursor to the password field and the [Clear] button will be available.

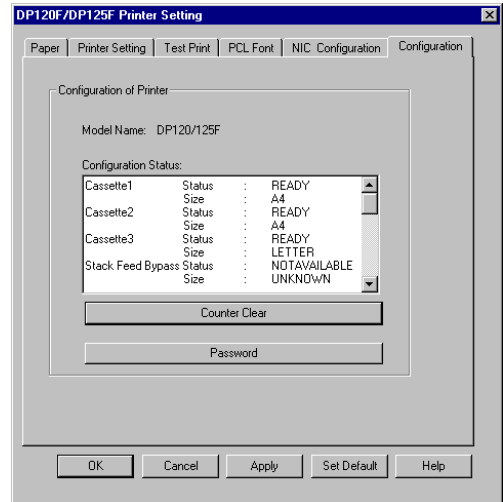


- 3 **Click on [Clear].**
 - To cancel clearing the print counter click on [Cancel].

Changing Password

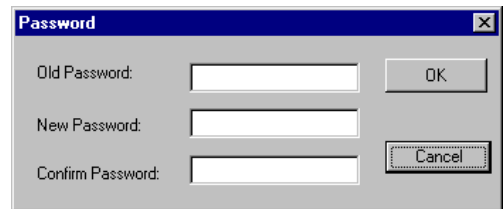
1 Click on [Password].

- The [Password] screen appears.



2 Enter the Old Password, New Password and Confirm Password.

- Old Password
Enter the old password.
- New Password
Enter the new password that you want to set.
- Confirm the Password
Enter the new password again for confirmation.



NOTE:

If you have not set the printer counter password, leave the Old password field blank.

3 Click on [OK].

- To cancel changing the password click on [Cancel].

OPERATING ON THE OPERATION PANEL

PCL OPTION

This sections describes the printer function settings on the Operation Panel of the machine. This function on the Operation Panel is only available when the Print Unit is installed on your machine.

The following are printer function items that can be configured on the Operation Panel.

DATA CLEAR: Reset the Print Unit. This is used to clear the data and initialize the Print Unit. All data that has already been received will be deleted without printing.

FORM FEED: Print the jobs that do not include the “End of Job” data. The jobs that do not include the “End of Job” data are not printed and saved in the memory of the Print Unit. This is used to print those jobs.

PRINT STATUS: Print the Configuration Page listing the PCL settings.

PRINT FONT: Print the list of PCL fonts.

CONTINUOUS FEED: Continue printing when the machine shows a warning status. When the warning status, “Load XX paper in XX Tray,” is displayed on the LCD Display on the Operation Panel, the machine stops and pauses printing until the paper is loaded in the tray. This is used to force the job to print.

BYPASS SETTING: This enables or disables the bypass tray. When the bypass tray is installed in your machine, this must be set to “Enable” to use the bypass tray.

JOB CANCEL: Cancel a job in progress. This only cancels jobs in the process of printing. When a job is being received from the computer, the printer waits until the job is completely received before cancelling the job.

SUPPLEMENT:

For further details about the Operation Panel of this machine, refer to DP120F/DP125F OPERATOR’S MANUAL.

Data Clear

NOTE:

It is highly recommended that this function not be performed while receiving a print job from the computer. Doing so will cause garbage data to be printed.

- 1 Turn the Flip Panel to the "50-73" view and press the PCL PRINT key.

PCL PRINT



- 2 Press **1** on the Dial Keypad to select DATA CLEAR.

PCL OPTION

1. DATA CLEAR
2. FORM FEED
3. PRINT STATUS

- 3 Press **1** on the Dial Keypad to select YES.

- To cancel the data clear, press [2] on the Dial Keypad.

DATA CLEAR?

1. YES
2. NO

- 4 The data is cleared

- The DATA CLEAR ACCEPTED message appears. After 2 sec., return to the Standby Mode.

DATA CLEAR ACCEPTED

Form Feed

NOTE:

This function is not available if no feed data exists in memory, or other jobs which are not from the Print Unit, such as copying or printing a facsimile, are in progress. In such cases, the "NOT ALLOWED NOW" message is displayed.

- 1 Turn the Flip Panel to the "50-73" view and press the PCL PRINT key.

PCL PRINT



- 2 Press (2) on the Dial Keypad to select FROM FEED.

```
PCL OPTION
1. DATA CLEAR
2. FORM FEED
3. PRINT STATUS
```

- 3 Press (1) on the Dial Keypad to select YES.

- To cancel the form feed, press (2) on the Dial Keypad.

```
FORCED FORM FEED?
1. YES
2. NO
```

- 4 Print the jobs stored in the memory.

- The FORM FEED ACCEPTED message appears. After 2 sec., return to the Standby Mode.

```
FORM FEED ACCEPTED
```

```
MAY-12-00 FRI11:59AM
WARMING UP
RESIDUAL MEMORY 100%
PRINTING FROM PC
```

Print Status

NOTE:

This function is not available when jobs which are not from the Print Unit, such as copying or printing a facsimile, are in progress. In such cases, the "NOT ALLOWED NOW" message is displayed.

- 1 Turn the Flip Panel to the "50-73" view and press the PCL PRINT key.

PCL PRINT



- 2 Press **3** on the Dial Keypad to select PRINT STATUS.

```
PCL OPTION
1. DATA CLEAR
2. FORM FEED
3. PRINT STATUS
```

- 3 Print the Configuration Page.

```
MAY-12-00 FRI11:59AM
WARMING UP
RESIDUAL MEMORY 100%
PRINTING FROM PC
```

SUPPLEMENT:

You can print the Configuration Page using the TOSHIBA Status Display as well. See "TOSHIBA STATUS DISPLAY FUNCTION - [Test Print] Tab" for a sample of the Configuration Page.

Print Font

NOTE:

This function is not available when jobs which are not from the Print Unit, such as copying or printing a facsimile, are in progress. In such cases, the "NOT ALLOWED NOW" message is displayed.

- 1 Turn the Flip Panel to the "50-73" view and press the PCL PRINT key.

PCL PRINT



- 2 Press 4 on the Dial Keypad to select PRINT STATUS.

- Items 4 to 5 are outside of the LCD frame. Use or to display and highlight the desired item.

```
PCL OPTION
2. FORM FEED
3. PRINT STATUS
4. PRINT FONT
```

- 3 Print the PCL Font Lists.

```
MAY-12-00 FRI11:59AM
WARMING UP
RESIDUAL MEMORY 100%
PRINTING FROM PC
```

SUPPLEMENT:

You can print the PCL Font Lists using the TOSHIBA Status Display as well. See "TOSHIBA STATUS DISPLAY FUNCTION - [Test Print] Tab" for a sample of the PCL Font Lists.

Continuous Feed

NOTE:

This function is not available while a print job is in the process of printing. In this case, the "NOT ALLOWED NOW" message is displayed.

SUPPLEMENTS:

- When "Auto Continue" is set to "0", the warning status is not displayed.
- When "Auto Continue" is set to a value other than "0", the warning status is displayed for the time set in "Auto Continue."
- This function is the same as the action which occurs when the "Auto Continue" time interval expires.

For further details about "Auto Continue," see "TOSHIBA STATUS DISPLAY FUNCTION - [Printer Setting] Tab."

- 1 The warning status is displayed on the LCD Display.

```
MAY-12-00 FRI11:59AM  
  
RESIDUAL MEMORY 100%  
LOAD A4 IN BYPASS
```

- 2 Turn the Flip Panel to the "50-73" view and press the PCL PRINT key.

PCL PRINT



- 3 Press **5** on the Dial Keypad to select CONTINUOUS FEED.

- Items 4 to 5 are outside of the LCD frame. Use

or to display and highlight the desired item.

```
PCL OPTION  
3. PRINT STATUS  
4. PRINT FONT  
5. CONTINUOUS FEED
```

- 4 Print the job.

```
MAY-12-00 FRI11:59AM  
WARMING UP  
RESIDUAL MEMORY 100%  
PRINTING FROM PC
```

Bypass Setting



When the Bypass Tray is installed in your machine, this item must be set to "Enable".

- 1** Turn the Flip Panel to the "50-73" view and press the PCL PRINT key.

PCL PRINT



- 2** Press **6** on the Dial Keypad to select **BYPASS SETTING**.

- Items 4 to 5 are outside of the LCD frame. Use  or  to display and highlight the desired item.

PCL OPTION
4. PRINT FONT
5. CONTINUOUS FEED
6. BYPASS SETTING

- 3** Press **1** on the Dial Keypad to select **ENABLE**.

- Press **2** on the Dial Keypad to select **DISABLE**.

- **ENABLE:** When the Bypass tray is installed, select this.
- **DISABLE:** When the Bypass tray is not installed, select this.

BYPASS SETTING
1. ENABLE
2. DISABLE

- 4** The Bypass Setting is completed.
- The OPERATION COMPLETED message appears. After 2 sec., return to the Standby Mode.

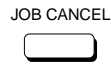
OPERATION COMPLETED

Job Cancel

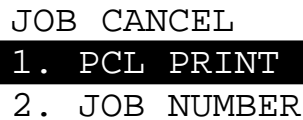
NOTES:

- This function is available while the print job is in the process of being printed or received. There are 5 other job types that also can be canceled: TRANSMIT, RECEIVE, POLLING, POLLING RESERVE, and JOB NUMBER. Refer to DP120F/DP125F OPERATOR'S MANUAL for other types of jobs. If there is no print job, then the "NO ENTRY" message is displayed.
- If the print job is canceled during printing, some blank paper may output to the tray.




- 1 In Standby Mode, press **JOB CANCEL** key.



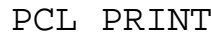
- 2 Press **1** on the Dial Keypad to select **PCL PRINT**.

A rectangular LCD display showing the text "JOB CANCEL" at the top. Below it, a menu is displayed with two options: "1. PCL PRINT" and "2. JOB NUMBER". The first option is highlighted with a black background.

SUPPLEMENT:

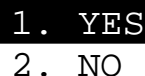
The menu items for **JOB CANCEL** may vary according to the number of jobs reserved for printing. If **PCL PRINT** is not 1 and it is not shown in the LCD frame, use  or  to display and highlight **PCL PRINT**. Then press the number of **PCL PRINT** or .

- 3 Press .

A rectangular LCD display showing the text "PCL PRINT".

- 4 Press **1** on the Dial Keypad to cancel the print job.

- To exit without canceling the job, press **2** on the Dial Keypad.

A rectangular LCD display showing the text "CANCEL ?".A rectangular LCD display showing a menu with two options: "1. YES" and "2. NO". The first option is highlighted with a black background.

- 5** **The job is canceled.**
- Return to Standby Mode.

TROUBLESHOOTING

WHEN AN ERROR MESSAGE IS DISPLAYED...

When an error message is displayed on the Status Display, please find the error in the column of "Error Message Displayed," then follow the instructions in the column of "Action."

TOSHIBA Status Display Error Messages

Error Message Displayed	Action
Fatal Error on Controller Memory	Turn off the power and call for service.
Fatal Error on Controller NVRAM	Turn off the power and call for service.
Fatal Error on Memory	Turn off the power and call for service.
Fatal Error on Fan Motor	Turn off the power and call for service.
Fatal Error on Fuser	Turn off the power and call for service.
Fatal Error on Scanner	Turn off the power and call for service.
Fatal Error on Main Motor	Turn off the power and call for service.
Fatal Error on NIC	Turn off the power and call for service.
Fatal Error on Flash ROM Checksum Error	Turn off the power and call for service.
Fatal Error on Engine I/F	Turn off the power and call for service.
Fatal Error on Controller Option Memory	Turn off the power and call for service.
Paper Empty on Stack Feed Bypass	Load the paper on Stack Feed Bypass
Paper Empty on Cassette1	Load the paper on Cassette 1
Paper Empty on Cassette2	Load the paper on Cassette 2
Paper Empty on Cassette3	Load the paper on Cassette 3
Paper Ejection Error	Clear the paper jam at the paper exit.
Paper Jam on Printer Inside	Open the Main Cover and clear the paper jam.
Paper Insertion Error	Clear the paper jam at the paper feeding entrance.
NIC Card Not Available	-
NIC Card Not Ready	-
Main Cover Open	Close the Main Cover.
Toner Empty	Please change Toner.
No Tray	Check if the Tray is mounted correctly.
Change Drum	Replace the Process Unit.
No Process Unit	Set the Process Unit.
Data Transfer Error on Network	Transfer again
Job too Complex	<ol style="list-style-type: none"> 1. Set the Page Protection ON. 2. Print the data with lower resolution. 3. Simplify the job. 3. Add the optional memory.
Memory Overflow	<ol style="list-style-type: none"> 1. Simplify the job. 2. Add the optional memory
Drum Life	Prepare a new drum cartridge.
Paper Length Mismatch	<ol style="list-style-type: none"> 1. Load the correct paper. 2. Select the correct tray.
Toner Low	Prepare a new toner cartridge.

Error Message Displayed	Action
Load A4 on Cassette1	Load A4 size paper on Cassette 1.
Load Letter on Cassette1	Load Letter size paper on Cassette 1.
Load Legal on Cassette1	Load Legal size paper on Cassette 1.
Load A4 on Cassette2	Load A4 size paper on Cassette 2.
Load Letter on Cassette2	Load Letter size paper on Cassette 2.
Load Legal on Cassette2	Load Legal size paper on Cassette 2.
Load A4 on Cassette3	Load A4 size paper on Cassette 3.
Load Letter on Cassette3	Load Letter size paper on Cassette 3.
Load Legal on Cassette3	Load Legal size paper on Cassette 3.
Load A4 on Stack Feed Bypass	Load A4 size paper on Stack Feed Bypass.
Load Letter on Stack Feed Bypass	Load Letter size paper on Stack Feed Bypass.
Load Legal on Stack Feed Bypass	Load Legal size paper on Stack Feed Bypass.
Load A5 on Stack Feed Bypass	Load A5 size paper on Stack Feed Bypass.
Load B5 on Stack Feed Bypass	Load B5 size paper on Stack Feed Bypass.
Load FOLIO on Stack Feed Bypass	Load FOLIO size paper on Stack Feed Bypass.
Load Statement on Stack Feed Bypass	Load Statement size paper on Stack Feed Bypass.
Load COM10 on Stack Feed Bypass	Load COM10 size paper on Stack Feed Bypass.
Load Monarch on Stack Feed Bypass	Load Monarch size paper on Stack Feed Bypass.
Load A4	Load A4.
Load Letter any Tray	Load Letter.
Load Legal any Tray	Load Legal.
Data Existing	-
Processing	-
Warming Up	Wait for a while.
Canceling	Wait for a while.
Printer Ready	-
Printing	-
Waiting	Wait for a while.
Initializing	Wait for a while.
Using By Another Job	Wait for a while.
Printer Power Off or Communication Error	1. Power on the printer. 2. Check if the cable is connected property.

WHEN PRINTING CANNOT BE PERFORMED...

When printing is not activated even after commanded from the computer, check the following:

Check Item	Action
Is the power ON?	Turn ON the power of the machine.
Is the printer cable disconnected?	Connect the printer cable correctly.
Is an appropriate printer cable used?	Please use an appropriate printer cable. When you guess the cable is cut, replace it with a new one. The printer cable varies depending on the computer to be connected. See "PRINTER CABLE SPECIFICATIONS" .
Is paper set?	Set paper in the required cassette.
Is any error message displayed?	Confirm the error message, then do the required action.

NOTES:

- * After performing any of the actions above, do the Test Print. See "[Test Print] Tab" .
If the Test Printing cannot be performed, please call for service.
- * If the printer is used on a network, ask the network administrator.

SPECIFICATIONS, AND OTHERS

SPECIFICATIONS OF THE PRINTER UNIT

Item	Specifications
Product Name	GA-1020
Print Speed	Max. 12 pages/minute
Paper Size	A4, A5, B5, FOLIO, LEGAL, LETTER, STATEMENT, COM10, MONARCH (A5, B5, FOLIO, STATEMENT, COM10, MONARCH is available for DP120F when optional Bypass Tray is installed.)
Interface	Conforming to IEEE-P1284 (Standard, Nibble Mode, ECP Mode)
Memory	Standard: SDRAM 8 Megabytes
Emulation	PCL-5e, PCL-XL
PCL Fonts	80 Roman Fonts
Applicable Computers:	IBM PC/AT computer and compatible. Display Resolution: 640 x 480 dpi or more OS: Microsoft Windows 95 Operating System Microsoft Windows 98 Operating System Microsoft Windows NT Workstation Operating System 4.0 Microsoft Windows NT ServerNetwork Operating System 4.0

LIST OF INTERNAL PCL FONTS

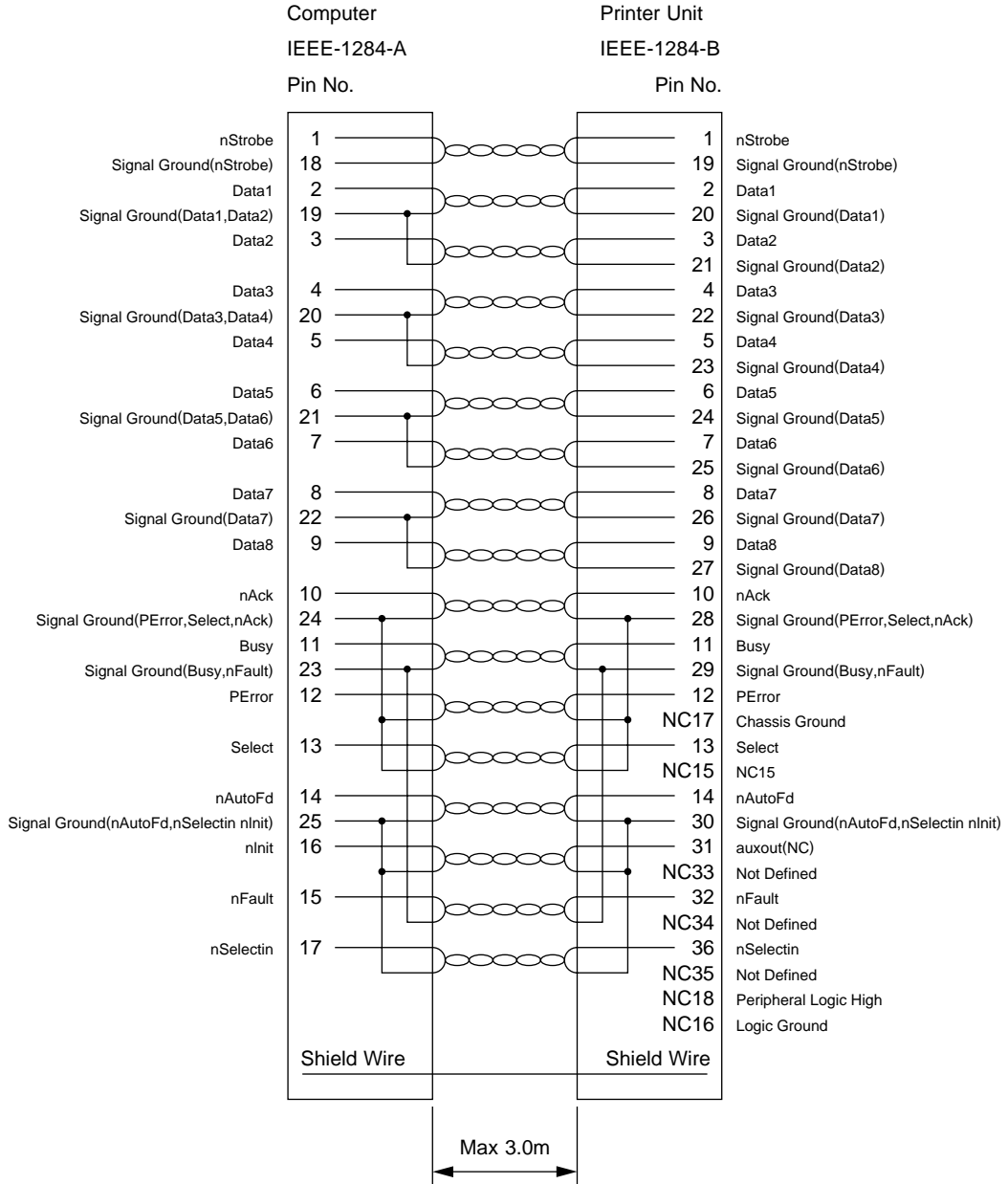
The following table shows the internal PCL fonts of this printer:

Font Number	Typeface	Pitch/Point	Escape Sequence
000	Courier	Scale	<esc>###<esc>(s0p***h0s0b4099T
001	CG Times	Scale	<esc>###<esc>(s1p\$\$\$v0s0b4101T
002	CG Times Bold	Scale	<esc>###<esc>(s1p\$\$\$v0s3b4101T
003	<i>CG Times Italic</i>	Scale	<esc>###<esc>(s1p\$\$\$v1s0b4101T
004	CG Times Bold Italic	Scale	<esc>###<esc>(s1p\$\$\$v1s3b4101T
005	CG Omega	Scale	<esc>###<esc>(s1p\$\$\$v0s0b4113T
006	CG Omega Bold	Scale	<esc>###<esc>(s1p\$\$\$v0s3b4113T
007	<i>CG Omega Italic</i>	Scale	<esc>###<esc>(s1p\$\$\$v1s0b4113T
008	CG Omega Bold Italic	Scale	<esc>###<esc>(s1p\$\$\$v1s3b4113T
009	<i>Coronet</i>	Scale	<esc>###<esc>(s1p\$\$\$v1s0b4116T
010	Clarendon Condensed	Scale	<esc>###<esc>(s1p\$\$\$v4s3b4140T
011	Univers Medium	Scale	<esc>###<esc>(s1p\$\$\$v0s0b4148T
012	Univers Bold	Scale	<esc>###<esc>(s1p\$\$\$v0s3b4148T
013	<i>Univers Medium Italic</i>	Scale	<esc>###<esc>(s1p\$\$\$v1s0b4148T
014	Univers Bold Italic	Scale	<esc>###<esc>(s1p\$\$\$v1s3b4148T
015	Univers Medium Condensed	Scale	<esc>###<esc>(s1p\$\$\$v4s0b4148T
016	Univers Bold Condensed	Scale	<esc>###<esc>(s1p\$\$\$v4s3b4148T
017	<i>Univers Medium Condensed Italic</i>	Scale	<esc>###<esc>(s1p\$\$\$v5s0b4148T
018	Univers Bold Condensed Italic	Scale	<esc>###<esc>(s1p\$\$\$v5s3b4148T
019	Antique Olive	Scale	<esc>###<esc>(s1p\$\$\$v0s0b4168T
020	Antique Olive Bold	Scale	<esc>###<esc>(s1p\$\$\$v0s3b4168T
021	<i>Antique Olive Italic</i>	Scale	<esc>###<esc>(s1p\$\$\$v1s0b4168T
022	Garamond Antiqua	Scale	<esc>###<esc>(s1p\$\$\$v0s0b4197T
023	Garamond Halbfett	Scale	<esc>###<esc>(s1p\$\$\$v0s3b4197T
024	<i>Garamond Kursiv</i>	Scale	<esc>###<esc>(s1p\$\$\$v1s0b4197T
025	Garamond Kursiv Halbfett	Scale	<esc>###<esc>(s1p\$\$\$v1s3b4197T
026	<i>Marigold</i>	Scale	<esc>###<esc>(s1p\$\$\$v0s0b4297T
027	Albertus Medium	Scale	<esc>###<esc>(s1p\$\$\$v0s1b4362T
028	Albertus Extra Bold	Scale	<esc>###<esc>(s1p\$\$\$v0s4b4362T
029	Arial	Scale	<esc>###<esc>(s1p\$\$\$v0s0b16602T
030	Arial Bold	Scale	<esc>###<esc>(s1p\$\$\$v0s3b16602T
031	<i>Arial Italic</i>	Scale	<esc>###<esc>(s1p\$\$\$v1s0b16602T
032	Arial Bold Italic	Scale	<esc>###<esc>(s1p\$\$\$v1s3b16602T
033	Times New	Scale	<esc>###<esc>(s1p\$\$\$v0s0b16901T
034	Times New Bold	Scale	<esc>###<esc>(s1p\$\$\$v0s3b16901T
035	<i>Times New Italic</i>	Scale	<esc>###<esc>(s1p\$\$\$v1s0b16901T
036	Times New Bold Italic	Scale	<esc>###<esc>(s1p\$\$\$v1s3b16901T
037	Helvetica	Scale	<esc>###<esc>(s1p\$\$\$v0s0b24580T
038	Helvetica Bold	Scale	<esc>###<esc>(s1p\$\$\$v0s3b24580T
039	<i>Helvetica Oblique</i>	Scale	<esc>###<esc>(s1p\$\$\$v1s0b24580T
040	Helvetica Bold Oblique	Scale	<esc>###<esc>(s1p\$\$\$v1s3b24580T
041	Helvetica Narrow	Scale	<esc>###<esc>(s1p\$\$\$v4s0b24580T
042	Helvetica Narrow Bold	Scale	<esc>###<esc>(s1p\$\$\$v4s3b24580T
043	<i>Helvetica Narrow Oblique</i>	Scale	<esc>###<esc>(s1p\$\$\$v5s0b24580T

Symbol set, *** Pitch : .10 - 576, \$\$\$ Point Size : .25 - 999.75

PRINTER CABLE SPECIFICATIONS

IBM PC/AT



SPECIFICATIONS, AND OTHER

NOTE: The printer cable must be shield-structured.

TOSHIBA TEC CORPORATION

1-1, KANDA NISHIKI-CHO, CHIYODA-KU, TOKYO, 101-8442, JAPAN