

EPSON STYLUS™ COLOR 440

Online Guide

f o r W i n d o w s



Introduction

Opening the Online Guide

Installing Microsoft® Internet Explorer 4.0

System Requirements

4009000

Introduction

This CD-ROM includes the following online guides;

❑ **Setup Guide**

To start using the printer, see this first.

(Or you can use the paper Setup & Daily Use Guide)

It contains the instructions and information about System Requirements, Safety Instructions, Setting Up, and Starting To Print.

❑ **Reference Guide***

To learn more about your printer, see this guide.

It contains the information on printer driver settings, printing on special paper, problem solving, printer specifications, and customer support.

You can install this guide in your hard disk.

❑ **Color Guide***

To learn more about color printing, see this guide.

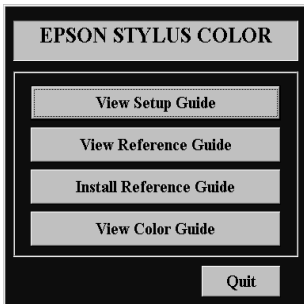
It includes samples and troubleshooting information that will help answer your questions about color printing.

* To read these guides requires an HTML browser to be installed.

Opening the Online Guides

Follow the steps below to open your online guide.

1. Insert the online guide CD in your CD-ROM drive.
2. The dialog box on the right appears.
If it does not, double-click the My Computer icon, double-click the CD-ROM icon, then double-click ESC440.exe.
3. Click the appropriate button.



To install the Reference Guide on your hard disk, click Install Reference Guide and follow the on-screen instructions. When installation is complete, a Reference Guide icon appears in the EPSON folder. Double-click the icon to open the guide.

Note:

If your hard disk does not have enough space, you can view the Reference Guide directly from the CD without installing.

Installing Microsoft® Internet Explorer 4.0

An HTML browser is required to use the Reference Guide and the Color Guide. If you do not have an HTML browser, install Microsoft Internet Explorer 4.0 from the online guide CD.

Note:

The copy of Internet Explorer included on the CD-ROM is a fully configured version. However, a minimum configuration is sufficient to view the Reference Guide and Color Guide. If you already have an HTML browser installed, you probably will not have to install Internet Explorer.

Note for Windows NT 4.0 users:

Before installing Microsoft Internet Explorer 4.0, you need to install the Windows NT Service Pack 3. Follow the instructions located on the `Browser\Win95nt\NT4sp3\Readme.txt` in the CD. Read also `License.txt` in the same directory.

-
1. Insert the online guide CD in your CD-ROM drive. If the dialog box on the previous page appears, click Quit.
 2. Double-click the My Computer icon, then double-click the CD-ROM icon.
 3. Double-click the Browser folder .
 4. For Windows 95 or NT 4.0: double-click Win95nt then double-click le40.
For Windows 3.1: double-click Win31.
 5. Double-click the le4setup.exe (for Windows 95 or NT 4.0) or the Setup.exe (for Windows 3.1) and follow the instructions on the screen.

System Requirements

To use this online guide CD, you need Microsoft Windows[®] 3.1, 95 or NT 4.0 and the following;

Minimum system: i386/25 MHz (for Windows 3.1)
i486/25 MHz (for Windows 95/ NT 4.0)
(Pentium or better recommended)

Memory: 16 MB (32 MB or more recommended)

Hard disk space: 20 MB
8 MB to install the Reference Guide
15 MB to install Microsoft Internet
Explorer 4.0

CD-ROM drive: Double-speed
(Quad-speed or better recommended)

Sound: Audio board with speakers or headphones

Monitor: 640 x 480 pixel or 800 x 600 pixel,
with High Color(16bit) or True Color(32bit)
setting

Browser: HTML browser
(Microsoft Internet Explorer 4.0, etc.)

