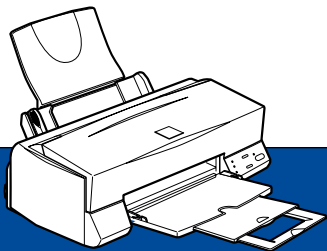


EPSON

Color Ink Jet Printer



EPSON STYLUS™ COLOR 460

Printer Software

3002782-00

All rights reserved. No part of this publication may be reproduced, stored in a retrieval system, or transmitted in any form or by any means, electronic, mechanical, photocopying, recording, or otherwise, without the prior written permission of SEIKO EPSON CORPORATION. The information contained herein is designed only for use with this EPSON printer. EPSON is not responsible for any use of this information as applied to other printers.

Neither SEIKO EPSON CORPORATION nor its affiliates shall be liable to the purchaser of this product or third parties for damages, losses, costs, or expenses incurred by the purchaser or third parties as a result of: accident, misuse, or abuse of this product or unauthorized modifications, repairs, or alterations to this product, or (excluding the U.S.) failure to strictly comply with SEIKO EPSON CORPORATION's operating and maintenance instructions.

SEIKO EPSON CORPORATION shall not be liable for any damages or problems arising from the use of any options or any consumable products other than those designated as Original EPSON Products or EPSON Approved Products by SEIKO EPSON CORPORATION.

SEIKO EPSON CORPORATION shall not be held liable for any damage resulting from electromagnetic interference that occurs from the use of any interface cables other than those designated as EPSON Approved Products by SEIKO EPSON CORPORATION.

EPSON is a registered trademark and EPSON Stylus is a trademark of SEIKO EPSON CORPORATION.

Microsoft and Windows are registered trademarks of Microsoft Corporation.

General Notice: Other product names used herein are for identification purposes only and may be trademarks of their respective owners. EPSON disclaims any and all rights in those marks.

Copyright © 1999 by SEIKO EPSON CORPORATION, Nagano, Japan.

About Your Printer Software

The EPSON Stylus COLOR 460 printer software CD-ROM contains all the software you'll need to use your new ink jet printer. Your printer software includes the following:

❑ **Printer driver**

The printer driver is the software that runs, or “drives”, your printer. With it, you can make settings such as print quality, speed, media type, and paper size.

❑ **Utilities**

The Nozzle Check, Head Cleaning, and Print Head Alignment utilities help you keep your printer in top operating condition. EPSON Status Monitor 3 (for Windows) or EPSON StatusMonitor (for Macintosh) notifies you of printer errors and displays printer status information such as the amount of ink remaining. The Status Monitor also guides you when replacing ink cartridges.

❑ Online Guides

The following online guides are provided to help you learn more about your printer and color printing.

Reference Guide	To learn more about your printer, see this guide. It includes detailed information on making printer driver settings, printing on special paper, and troubleshooting. You can view this guide directly from the CD, or install it on your computer and view it from your hard disk.
Color Guide	See this guide to learn about color imaging basics and advanced techniques. It includes samples and troubleshooting information to help answer your color printing questions. View it directly from the CD.

Note:

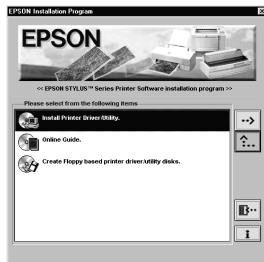
A web browser must be installed on your computer to read these guides.

Starting the Printer Software

For Windows

Insert the printer software CD-ROM in the CD-ROM drive. The Installer dialog box appears as shown on the right:

If it does not, double-click the **My Computer** icon. Click the **CD-ROM** icon, then select **Open** from the file menu. Then double-click **Epssetup.exe**.



Installing the Printer Driver

*To install the printer driver, double-click **Install Printer Driver/Utility** to start the printer software installation. For more information, see your User's Guide.*

Opening the Online Guides

*To install or view the online guides, double-click **Online Guide**, then follow the on-screen instructions. For more information, see page 5.*

For Macintosh

Insert the printer software CD-ROM in the CD-ROM drive. The EPSON window appears.

Installing the Printer Driver

*To install the printer driver, double-click the **Install Printer Driver/Utility** folder, then double-click the **Installer** icon to start the printer software installation. For more information, see your User's Guide.*

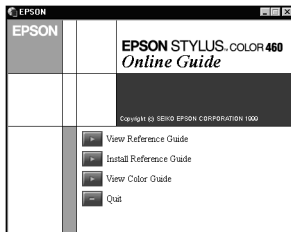
Opening the Online Guides

*To install or view the online guides, double-click the **Online Guide** folder, double-click **EPSON STYLUS COLOR 460**, then follow the on-screen instructions. For more information, see page 6.*

Opening the Online Guides

For Windows

1. Double-click **Online Guide** from the Installer dialog box.
2. Click the appropriate **View** button to open the guide of your choice.



To install the Reference Guide on your hard disk, click **Install**

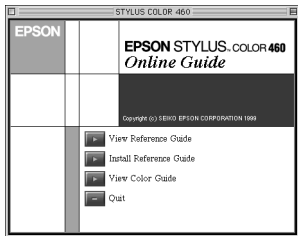
Reference Guide and follow the on-screen instructions. When the installation is complete, a **ESC460 Guide** icon appears in the EPSON folder. Double-click the icon to open the guide.

Note:

If your hard disk does not have enough space to install the Reference Guide, view it directly from the CD.

For Macintosh

1. Double-click the **Online Guide** folder in the EPSON window.
2. Double-click **EPSON STYLUS COLOR 460**. The dialog box on the right appears.
3. Click the appropriate **View** button to open the guide of your choice.



To install the Reference Guide on your hard disk, click **Install Reference Guide** and follow the on-screen instructions. When the installation is complete, a **View Reference Guide** icon appears in the EPSON folder. Double-click the icon to open the guide.

Note:

If your hard disk does not have enough space to install the Reference Guide, view it directly from the CD.

Installing Microsoft[®] Internet Explorer

A Web browser is required to view the online guides. If you do not know whether you have a web browser installed on your computer, try to view an online guide. If you receive a message instructing you to install a browser, follow the instructions in this section to install Microsoft Internet Explorer from the software CD.

For Windows

Note for Windows NT 4.0 users:

Before installing Microsoft Internet Explorer, you need to install the Windows NT Service Pack 3 or later.

-
1. Insert the software CD in your CD-ROM drive. If the Installer dialog box appears, click **Quit**.
 2. Double-click the **My Computer** icon. Click the **CD-ROM** icon, then select **Open** from the File menu.
 3. Double-click the **Browser** folder.
 4. Double-click **Win95nt** then double-click **ie**.
 5. Double-click **ie5 setup.exe** (the number may vary by version) for Windows 95/98 or NT 4.0, and follow the on-screen instructions.

For Macintosh

1. Insert the software CD in your CD-ROM drive.
2. Double-click the **Browser** folder.
3. Follow the on-screen instructions to install Internet Explorer.

System Requirements for Online Guides

For Windows

System:	Microsoft Windows [®] 95, 98, or NT 4.0
CPU:	i486/25 MHz (for Windows 95 / NT 4.0) i486/66 MHz (for Windows 98) (Pentium or better recommended)
Memory:	16 MB (32 MB or more recommended)
Hard disk space:	5 MB to install the Reference Guide 45 MB to install Microsoft Internet Explorer
CD-ROM drive:	Double-speed (Quad-speed or better recommended)

Display:	640 x 480 pixel or 800 x 600 pixel resolution, with High Color (16 bit) or True Color (32 bit) setting
Browser:	Web browser (Microsoft Internet Explorer 4.0 or later recommended)

For Macintosh

System:	System 7.5.1 (System 7.6 or later recommended)
Memory:	16 MB (32 MB or more recommended)
Hard disk space:	4 MB to install the Reference Guide 15 MB to install Microsoft Internet Explorer
CD-ROM drive:	Double-speed (Quad-speed or better recommended)
Display:	Color monitor with 640 x 480 pixel resolution or greater (Thousands of colors recommended)
Browser:	Web browser (Microsoft Internet Explorer 4.0 or later recommended)

EPSON

Color Ink Jet Printer

EPSON STYLUS...COLOR 460

Printer Software



4010781-00