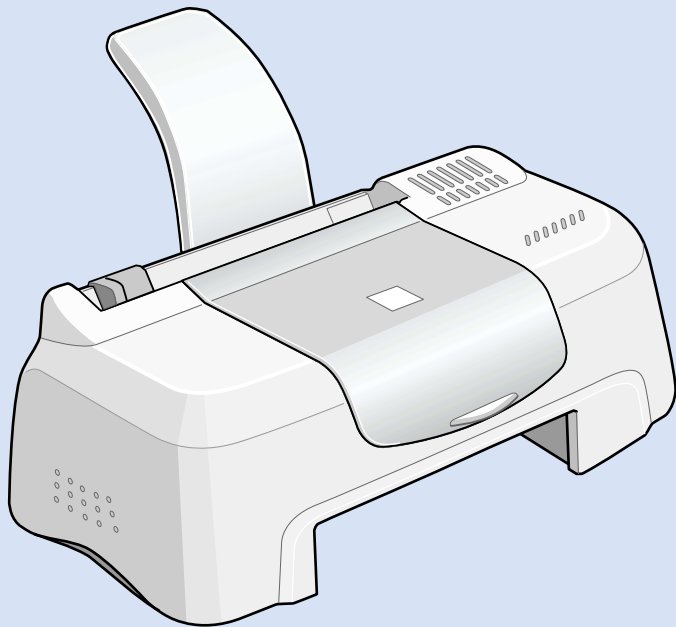


# EPSON STYLUS™ COLOR 480



## *Daily Use Guide*

**EPSON®**

# EPSON STYLUS™ COLOR 480

## Daily Use Guide

<b><i>Where to Find Information</i></b> . . . . .	<b>2</b>
<b><i>Safety Instructions</i></b> . . . . .	<b>3</b>
Important Safety Instructions . . . . .	3
A Few Precautions . . . . .	4
For United Kingdom Users . . . . .	6
Warnings, Cautions, and Notes . . . . .	7
<b><i>Loading Special Paper, Envelopes, and Other Media</i></b>	<b>7</b>
Loading Special Paper and Other Media . . . . .	7
Loading Envelopes . . . . .	8
<b><i>Using the Printer Software</i></b> . . . . .	<b>9</b>
Printer Software Introduction . . . . .	9
Making Changes to Printer Settings . . . . .	10
Getting Information Through Online Help . . . . .	14
<b><i>Checking Printer Status</i></b> . . . . .	<b>15</b>
Using EPSON Status Monitor 3 . . . . .	15
<b><i>Replacing Ink Cartridges</i></b> . . . . .	<b>16</b>
<b><i>Maintenance</i></b> . . . . .	<b>17</b>
Checking the Print Head Nozzles . . . . .	17
Cleaning the Print Head . . . . .	18
Aligning the Print Head . . . . .	19
<b><i>Troubleshooting</i></b> . . . . .	<b>20</b>
Error Messages . . . . .	20
Typical Problems and Solutions . . . . .	20
Where to Get Help . . . . .	20
<b><i>Options and Consumable Products</i></b> . . . . .	<b>21</b>
Options and Consumable Products . . . . .	21

# Where to Find Information

## Setup Guide

This guide will help you set up and begin using your printer. It includes information on setting up your printer and installing the printer software.

## Daily Use guide

This guide provides information on normal printer operation. It also contains troubleshooting tips and customer support information.

## Online guides included on the CD-ROM

The guides contained on the CD-ROM included with your printer will help you learn more about your printer and color printing. To view these guides, you must have a Web browser installed on your computer.

**Reference Guide** Provides detailed information about printer software settings, printing on special paper, maintenance, and problem solving.

All rights reserved. No part of this publication may be reproduced, stored in a retrieval system, or transmitted in any form or by any means, electronic, mechanical, photocopying, recording, or otherwise, without the prior written permission of SEIKO EPSON CORPORATION. The information contained herein is designed only for use with this EPSON printer. EPSON is not responsible for any use of this information as applied to other printers.

Neither SEIKO EPSON CORPORATION nor its affiliates shall be liable to the purchaser of this product or third parties for damages, losses, costs, or expenses incurred by the purchaser or third parties as a result of: accident, misuse, or abuse of this product or unauthorized modifications, repairs, or alterations to this product, or (excluding the U.S.) failure to strictly comply with SEIKO EPSON CORPORATION's operating and maintenance instructions.

SEIKO EPSON CORPORATION shall not be liable for any damages or problems arising from the use of any options or any consumable products other than those designated as Original EPSON Products or EPSON Approved Products by SEIKO EPSON CORPORATION.

SEIKO EPSON CORPORATION shall not be held liable for any damage resulting from electromagnetic interference that occurs from the use of any interface cables other than those designated as EPSON Approved Products by SEIKO EPSON CORPORATION.

EPSON is a registered trademark and EPSON Stylus is a trademark of SEIKO EPSON CORPORATION.

Microsoft and Windows are registered trademarks of Microsoft Corporation.

*General Notice: Other product names used herein are for identification purposes only and may be trademarks of their respective owners. EPSON disclaims any and all rights in those marks.*

Copyright © 2000 by SEIKO EPSON CORPORATION, Nagano, Japan.



Printed on Recycled Paper.

# Safety Instructions

---

## Important Safety Instructions

Read all of these instructions before using your printer. Also, be sure to follow all warnings and instructions marked on the printer.

- ❑ Do not block or cover the openings in the printer's cabinet. Do not insert objects through the slots.
- ❑ Take care not to spill liquid on the printer.
- ❑ Use only the type of power source indicated on the printer's label.
- ❑ Connect all equipment to properly grounded power outlets. Avoid using outlets on the same circuit as photocopiers or air control systems that regularly switch on and off.
- ❑ Avoid electrical outlets controlled by wall switches or automatic timers.
- ❑ Keep the entire computer system away from potential sources of electromagnetic interference, such as loudspeakers or the base units of cordless telephones.
- ❑ Do not use a damaged or frayed power cord.
- ❑ Unplug the printer's power cord from the electrical outlet when you do not use the printer for a long period of time.
- ❑ If you use an extension cord with the printer, make sure the total ampere rating of the devices plugged into the extension cord does not exceed the cord's ampere rating. Also, make sure the total ampere rating of all devices plugged into the wall outlet does not exceed the wall outlet's ampere rating.
- ❑ Do not attempt to service the printer yourself.

- ❑ Unplug the printer and refer servicing to qualified service personnel under the following conditions:

The power cord or plug is damaged; liquid has entered the printer; the printer has been dropped or the cabinet damaged; the printer does not operate normally or exhibits a distinct change in performance.

- ❑ If you use the printer in Germany, observe the following:

To provide adequate short-circuit protection and over-current protection for this printer, the building installation must be protected by a 10/16 Amp circuit breaker.

Bei Anschluß des Druckers an die Stromversorgung muß sichergestellt werden, daß die Gebäudeinstallation mit einer 10/16 A-Sicherung abgesichert ist.

---

## ***A Few Precautions***

Take note of the following when using the printer, handling the ink cartridges, or choosing a location for the printer.

### ***When using the printer***

- ❑ Do not put your hand inside the printer or touch the ink cartridges during printing.
- ❑ Do not move the print head by hand; otherwise, you may damage the printer.
- ❑ Before transporting the printer, make sure the print head is in the home (far right) position and the ink cartridges are in place.

### ***When handling the ink cartridges***

- ❑ Keep ink cartridges out of the reach of children. Do not allow children to drink from or otherwise handle the cartridges.
- ❑ If ink gets on your skin, wash it off with soap and water. If it gets in your eyes, flush them immediately with water.

- ❑ Do not shake an ink cartridge; this can cause leakage.
- ❑ Install the ink cartridge immediately after you remove it from its package. Leaving the cartridge unpacked for a long time before use may result in reduced print quality.
- ❑ Once you install an ink cartridge, do not open the clamp or remove the cartridge except to replace it with a new one. Otherwise, the cartridge may become unusable.
- ❑ Do not use an ink cartridge beyond the date printed on the cartridge carton. For best results, use up the ink cartridges within six months of installing them.
- ❑ Do not dismantle the ink cartridges or try to refill them. This could damage the print head.

### ***When choosing a place for the printer***

- ❑ Place the printer on a flat, stable surface that extends beyond the printer base in all directions. The printer will not operate properly if it is tilted or at an angle.
- ❑ Leave enough space in front of the printer for paper to be ejected smoothly.
- ❑ Avoid places subject to rapid changes in temperature and humidity. Also, keep the printer away from direct sunlight, strong light, or heat sources.
- ❑ Avoid places subject to shocks and vibrations.
- ❑ Leave enough room around the printer to allow for sufficient ventilation.
- ❑ Place the printer near a wall outlet where the plug can be easily unplugged.

***Note for French-speaking users:***

*Placez l'imprimante près d'une prise de courant d'où la fiche peut être débranchée facilement.*

- ❑ Avoid places subject to dust.

---

## ***For United Kingdom Users***

### ***Use of options***

EPSON (UK) Limited shall not be liable against any damages or problems arising from the use of any options or consumable products other than those designated as Original EPSON Products or EPSON Approved Products by EPSON (UK) Limited.

### ***Safety information***



#### ***Warning:***

*This appliance must be earthed. Refer to the rating plate for voltage and check that the appliance voltage corresponds to the supply voltage.*

#### ***Important:***

The wires in the mains lead fitted to this appliance are coloured in accordance with the following code:

*Green and yellow — Earth*

*Blue — Neutral*

*Brown — Live*

#### ***If you have to fit a plug:***

As the colours of the mains lead of this appliance may not match coloured markings used to identify the terminals in a plug, please proceed as follows:

The green and yellow wire must be connected to the terminal in the plug which is marked with the letter E or the earth symbol ( $\perp$ ).

The blue wire must be connected to the terminal in the plug marked with the letter N.

The brown wire must be connected to the terminal in the plug marked with the letter L.

If damage occurs to the plug, replace the cord set or consult a qualified electrician.

Replace fuses only with a fuse of the correct size and rating.

---

## Warnings, Cautions, and Notes



### **Warnings**

*must be followed carefully to avoid bodily injury.*



### **Cautions**

*must be observed to avoid damage to your equipment.*

### **Notes**

*contain important information and useful tips on the operation of your printer.*

## Loading Special Paper, Envelopes, and Other Media

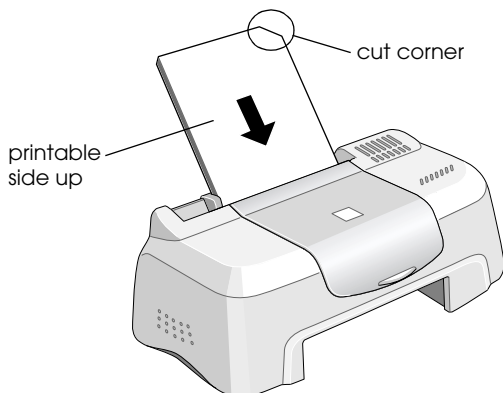
---

### Loading Special Paper and Other Media

You can print on a wide variety of special media, including ink jet paper, photo quality glossy film, photo paper, transparencies, index cards, and adhesive sheets.

When loading special media distributed by EPSON, read the instruction sheets packed with the media first and keep the following points in mind. For more details on using such media, see “Paper Handling” in the online *Reference Guide*.

- ❑ Make sure the printable side of the paper is facing up when loading media into the sheet feeder. See the instruction sheets packed with the media to determine which side is the printable surface. Some media have cut corners to help identify the correct loading direction, as shown in the illustration.



- ❑ Make sure the paper stack fits under the arrow mark located on the inside surface of the left edge guide.
- ❑ The loading capacity for EPSON special media is explained in Loading Special Paper and Other Media section in the online *Reference Guide*.

## ***About special media cleaning sheets***

Cleaning sheets packaged with EPSON special media should not be used with this printer. The cleaning function performed by these sheets is not necessary with this type of printer, and the sheets could jam in the printer.

---

## ***Loading Envelopes***

When printing on envelopes, please note the following:

- ❑ You can load up to 10 envelopes into the sheet feeder.

**Note:**

*The folding quality and thickness of envelopes varies widely. If the total thickness of the stack of envelopes exceeds 10 mm, press each envelope in the stack flat before loading.*

- ❑ Load envelopes flap edge first with the flap side down.
- ❑ Do not use envelopes that are curled or folded. Make sure to flatten the envelope flaps before loading. Avoid using envelopes that are too thin; they may curl during printing.
- ❑ Select Plain Paper as the Media Type setting in the printer driver.

## ***Using the Printer Software***

---

### ***Printer Software Introduction***

The printer software which comes with your printer includes a printer driver and printer utilities. The printer driver lets you choose from a wide variety of settings to get the best results from your printer. The printer utilities help you check the printer and keep it in top operating condition.

### ***Accessing the printer software***

You can access the printer software from most Windows applications, or from the Windows Start menu (Windows 98, 95, 2000 and NT 4.0).

When you access the printer software from a Windows application, the settings you make apply only to the application you are using.

When you access the printer software from the Start menu, the settings you make apply to all of your Windows applications.

## ***From Windows applications***

1. From the File menu, click Print or Print Setup.
2. In the dialog box that appears, click Printer, Setup, Options, or Properties. (Depending on your application, you may need to click a combination of these buttons.) The printer driver opens.

## ***From the Windows Start menu***

1. Click Start, point to Settings, then click Printers.
2. For Windows 95 and 98, select your printer, then click Properties on the File menu. For Windows 2000, select your printer, then click Printing Preferences on the File menu. For NT 4.0, select your printer, then click Document Defaults on the File menu. The printer driver opens.

---

## ***Making Changes to Printer Settings***

The printer driver features the following menus and settings.

Main:      Media Type, Ink, Mode

Paper:     Paper Size, Copies, Orientation, Printable Area

Layout:    Reduce/Enlarge, Multi-Page, Watermark

The Mode settings on the Main menu are arranged to give you four levels of control over the printer driver:

Automatic, PhotoEnhance, Custom, Advanced

In addition to making comprehensive Mode settings that affect overall print quality, you can also modify individual aspects of your printout using the Paper and Layout menus. For more information about the Paper and Layout menus, see your online *Reference Guide*.

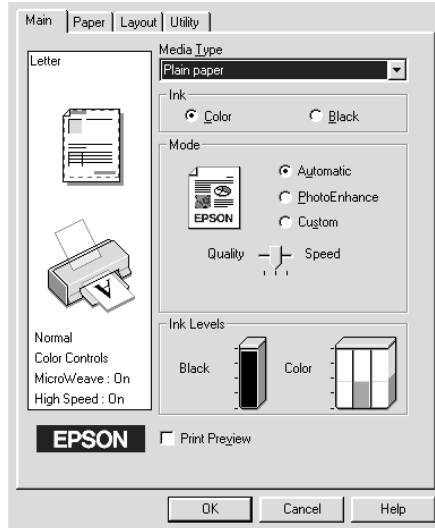
## Making the Media Type setting

The Media Type setting determines what other settings are available, so you should always make this setting first.

On the Main menu, select the Media Type setting that matches the media which is loaded in the printer. To find out what Media Type you are using, find your media in the list on Making the Media Type setting in the online *Reference Guide*, and refer to the corresponding Media Type under which it is grouped. For some media, there are several Media Type settings to choose from.

## Using the Automatic mode

When Automatic is selected as the Mode setting on the Main menu, the printer driver takes care of all detailed settings based on the current Media Type and Ink settings. To make the Ink setting, click **COLOR** to print in color, or **BLACK** to print in black-and-white or grayscale. To make the Media Type setting, see “Making the Media Type setting” on page 11.

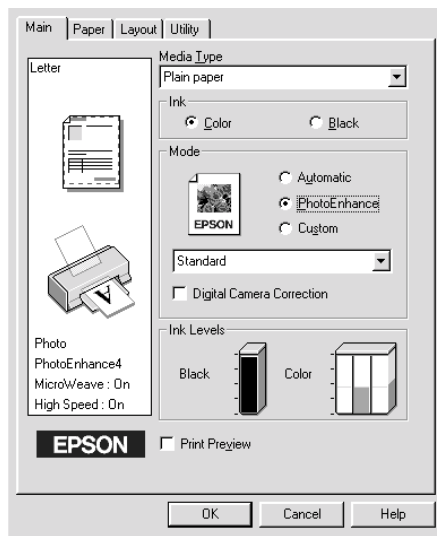


**Note:**

Depending on the media selected in the Media Type list (while Automatic is selected), a slider appears under the Custom radio button that lets you choose from Quality or Speed settings. Select Quality when print quality is more important than speed.

## Using the PhotoEnhance mode

The PhotoEnhance mode provides a variety of image-correction settings that you can apply to your photo images before printing. PhotoEnhance does not affect your original data.



**Note:**

- ❑ This mode is only available when printing 16-, 24-, or 32-bit color data.
- ❑ Printing with PhotoEnhance selected may increase the time required for printing, depending on your computer system and the amount of data contained in your image.

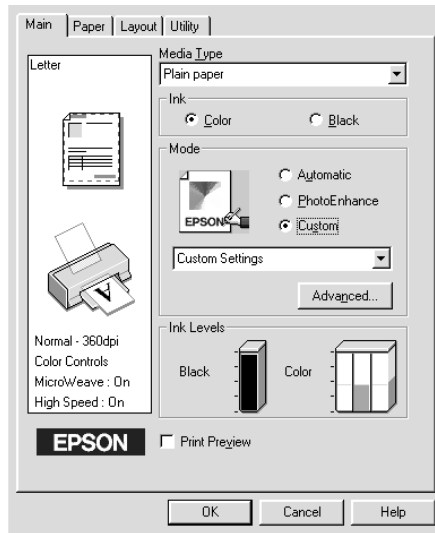
You can select from the following settings.

<b>Standard</b>	This setting provides standard image correction for most photos. Try this first.
<b>People</b>	This setting is best for photos of people.
<b>Nature</b>	This setting is best for outdoor scenery such as mountains, sky, and oceans.
<b>Soft Focus</b>	This setting makes your photos look as if they were taken with a soft-focus lens.
<b>Sepia</b>	This setting applies a sepia tone to your photos.

Selecting PhotoEnhance also enables the Digital Camera Correction check box. Select this check box when you are printing photos taken with a digital camera to give your printed images the smooth, natural appearance of photographs taken with a film camera.

## Using the Custom mode

The Custom mode offers ready-made settings designed for printing text and graphs and for applying a color-matching method. You can also create and save your own custom settings.



You can select from the following ready-made settings.

<b>ICM</b> (For Windows 98, 95 and 2000)	This setting automatically adjusts printout colors to match colors on your screen. ICM stands for Image Color Matching.
<b>sRGB</b>	This setting is best for color matching with other sRGB devices.

Follow the steps below to select a Custom setting.

1. Select Custom as the Mode setting on the Main menu.
2. Click anywhere in the list box to open it, then select the most appropriate setting for the type of document or image you wish to print.
3. When you select a Custom setting, other settings such as Print Quality, Halftoning, and Color Adjustment are made automatically. Changes to these settings are reflected in the display on the left side of the Main menu.
4. Before printing, be sure to verify the Media Type and Ink settings, as they may be affected by the Custom setting you select. See “Making the Media Type setting” on page 11.

## ***Previewing your printout***

Select the Print Preview check box on the Main menu when you wish to view a preview of your document before printing.

---

## ***Getting Information Through Online Help***

Your printer software has an extensive online help feature, which provides you with instructions on printing, making printer driver settings, and using printer utilities.

## Accessing help from your application

Open the File menu and choose Print or Print Setup. Then click Printer, Setup, Options, or Properties. (Depending on your application, you may need to click a combination of these buttons.) Click Help at the bottom of the Main, Paper, Layout, and Utility menus for help related to the items on that menu.

You can get specific help related to any item on a menu by right-clicking the item, then clicking the What's This? command.

## Accessing help from the Windows Start menu

Click the Start button, point to Programs and Epson (for Windows 98 and 95) or EPSON Printers (for Windows 2000 and NT 4.0), then click EPSON Stylus COLOR 480 Help. The help contents window opens.

# Checking Printer Status

---

## Using EPSON Status Monitor 3

EPSON Status Monitor 3 displays detailed information on the printer status.

**Note:**

*Before using EPSON Status Monitor 3, be sure to read its README file. To open this file, click Start, point to Programs and then EPSON or EPSON Printers, then click EPSON Stylus COLOR 480 Readme.*

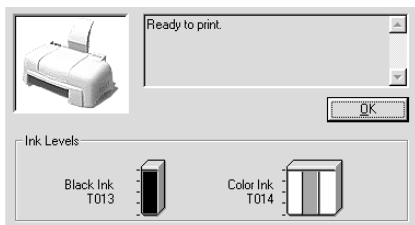
## Accessing EPSON Status Monitor 3

There are two ways to access EPSON Status Monitor 3.

- ❑ Double-click the printer-shaped shortcut icon on the Windows taskbar. See "Monitoring Preferences" in the online *Reference Guide*.

- ❑ Open the printer driver, click the Utility tab, then click EPSON Status Monitor 3.

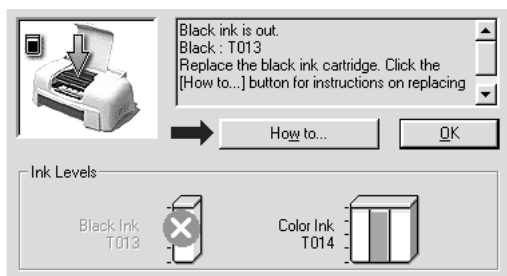
When you access EPSON Status Monitor 3, the following window appears.



## Replacing Ink Cartridges

The Status Monitor 3 utility lets you monitor the remaining ink levels from your computer and view on-screen instructions for replacing a low or empty ink cartridge.

When an ink cartridge is low or empty, click the **How to** button in the Status Monitor's Printer Status window; the print head moves to the ink cartridge replacement position. Follow the on-screen instructions to replace the cartridge.



For more information on using the Status Monitor, see "Using EPSON Status Monitor 3" in the online *Reference Guide*.

**Note:**

*If you need to replace an ink cartridge before it is empty, use the Ink Cartridge Replacement utility from the Utilities menu in your EPSON printer driver.*

Please read Warnings, Caution notes and other notes about Ink Cartridges on Replacing an Empty Ink Cartridge section in the online *Reference Guide* before replacing the ink cartridges.

## Maintenance

---

### Checking the Print Head Nozzles

If you find that the printed image is unexpectedly faint or dots in the printed image are missing, you may be able to identify the problem by checking the print head nozzles.

You can check the print head nozzles from your computer with the Nozzle Check utility, accessed through the printer software or the shortcut icon.

### Using the Nozzle Check utility

**Note:**

- ❑ *Before using the utility, make sure that A4 or Letter size paper is loaded in the sheet feeder.*
- ❑ *Do not use the Nozzle Check utility while printing is in progress; otherwise, your printout may be marred.*

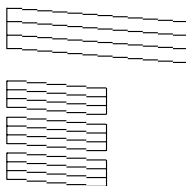
There are two ways to access the utility:

- ❑ Right-click the printer-shaped icon on the Windows taskbar and select Nozzle Check.
- ❑ Access the printer software and click the Utility tab, then click the Nozzle Check button.

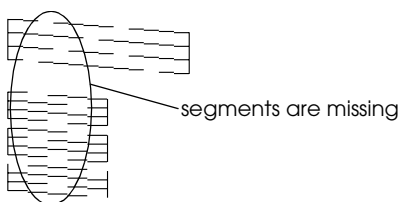
After opening the utility, follow the on-screen instructions.

The printer prints an operation check page including your printer's ROM version information, the ink counter code, and a nozzle check pattern. Below are sample printouts.

Good sample



Print head needs to be cleaned



The above sample is in black and white, but the actual test prints in color (CMYK).

If the nozzle check page does not print satisfactorily (for example, if any segment of the printed lines is missing) there is a problem with the printer. This could be a clogged ink nozzle or a misaligned print head. See the next section for details on cleaning the print head. For information on aligning the print head, see “Aligning the Print Head” on page 19.

---

## ***Cleaning the Print Head***

If you find that the printed image is unexpectedly faint or dots in the printed image are missing, you may be able to solve these problems by cleaning the print head, which ensures that the nozzles are delivering ink properly.

You can clean the print head from your computer using the Head Cleaning utility, accessed through the printer software or the shortcut icon.

**Note:**

- ❑ *Print head cleaning uses both color and black ink. To avoid wasting ink, clean the print head only if print quality declines; for example, if the printout is blurry or the color is incorrect or missing.*
- ❑ *Use the Nozzle Check utility first to confirm that the print head needs to be cleaned. This saves ink.*
- ❑ *Do not start the Head Cleaning or Nozzle Check utility while printing is in progress; otherwise, your printout may be marred.*

## **Using the Head Cleaning utility**

**Note:**

*If the Status Monitor or Progress Meter displays a message indicating that the ink cartridges need replacing, you cannot clean the print head. Replace the appropriate ink cartridge first.*

There are two ways to access the utility:

- ❑ *Right-click the printer-shaped icon on the Windows taskbar and select Head Cleaning.*
- ❑ *Access the printer software and click the Utility tab, then click the Head Cleaning button.*

After opening the utility, follow the on-screen instructions.

---

## **Aligning the Print Head**

If you notice a misalignment of vertical lines, you may be able to solve this problem from your computer with the Print Head Alignment utility.

**Note:**

*Do not start the Print Head Alignment utility while printing is in progress; otherwise, your printout may be marred.*

There are two ways to access the utility:

- ❑ Right-click the printer-shaped icon on the Windows taskbar and select Print Head Alignment.
- ❑ Access the printer software and click the Utility tab, then click the Print Head Alignment button.

After opening the utility, follow the on-screen instructions.

## ***Troubleshooting***

---

### ***Error Messages***

The Status Monitor 3 utility provides status messages and a graphic display showing the current state of the printer.

If a problem occurs while printing, an error message appears in the Progress Meter window. Click the How To button to have the Status Monitor provide instructions for dealing with the problem.

### ***Typical Problems and Solutions***

Most printer problems have simple solutions. Find the problem in the Problem Solver section in the online *Reference Guide* and apply the recommended solution.

### ***Where to Get Help***

If your printer is not operating properly and you cannot solve the problem using the troubleshooting information in your printer documentation, contact customer support services for assistance.

Customer support will be able to help you much more quickly if you provide them with the following information.

- ❑ Serial number of your printer  
(The serial number label is on the back of the printer)
- ❑ Printer model
- ❑ Brand and model of your computer
- ❑ Printer software version  
(Click ABOUT in your printer driver)
- ❑ Windows version you are using
- ❑ Software application(s) you normally use with your printer  
and their version number(s)

## Options and Consumable Products

---

### Options and Consumable Products

#### Options

EPSON supplies the following interface cable for your printer. However, you can use any interface cable that meets these specifications. See your computer manual for any additional requirements.

Parallel Interface Cable (shielded) C83602\* from D-SUB 25-pin (computer) to 36-pin Amphenol 57 Series (printer)

This cable supports bidirectional communication.

**Note:**

- ❑ *The asterisk (\*) is a substitute for the last digit of the product number, which varies by location.*
- ❑ *Depending on your geographic location, this cable may not be supplied.*

**Caution:**

*Use only interface cables which meet the specifications listed above. Using other cables not covered by EPSON warranties may cause the printer to malfunction.*

## **Consumable products**

The following ink cartridges and EPSON special media are available for your printer.

### **Ink cartridges**

You can use the following cartridges with your printer.

Black ink cartridge	T013
Color ink cartridge	T014

**Note:**

*The product numbers of ink cartridges may vary by location.*

### **EPSON special media**

EPSON offers specifically designed media for ink jet printers to meet most high-quality printing needs.

EPSON Premium Ink Jet Plain Paper (A4)	S041214
EPSON 360 dpi Ink Jet Paper (A4)	S041059 S041025
EPSON 360 dpi Ink Jet Paper (Letter)	S041060 S041028
EPSON Photo Quality Ink Jet Paper (A4)	S041061 S041026
EPSON Photo Quality Ink Jet Paper (Letter)	S041062 S041029
EPSON Photo Quality Ink Jet Paper (Legal)	S041067 S041048
EPSON Photo Quality Ink Jet Cards (A6)	S041054
EPSON Photo Quality Ink Jet Cards (5 × 8")	S041121

EPSON Photo Quality Ink Jet Cards (8 × 10")	S041122
EPSON Photo Quality Self Adhesive Sheets (A4)	S041106
EPSON Ink Jet Note Cards A6 (with envelopes)	S041147
EPSON Ink Jet Greeting Cards 5 × 8" (with envelopes)	S041148
EPSON Ink Jet Greeting Cards 8 × 10" (with envelopes)	S041149
EPSON Photo Quality Glossy Film (A4)	S041071
EPSON Photo Quality Glossy Film (Letter)	S041072
EPSON Photo Quality Glossy Film (A6)	S041107
EPSON Ink Jet Transparencies (A4)	S041063
EPSON Ink Jet Transparencies (Letter)	S041064
EPSON Photo Paper (A4)	S041140
EPSON Photo Paper (Letter)	S041141
EPSON Photo Paper (4 × 6")	S041134
EPSON Photo Paper (100 × 150 mm)	S041255
EPSON Photo Paper (200 × 300 mm)	S041254
EPSON Photo Paper Cards (A4)	S041177
EPSON Photo Stickers 16 (A6)	S041144
EPSON Photo Stickers 4 (A6)	S041176
EPSON Panoramic Photo Paper (210 × 594 mm)	S041145
EPSON Iron-On Cool Peel Transfer Paper (A4)	S041154
EPSON Iron-On Cool Peel Transfer Paper (Letter)	S041153 S041155
EPSON Matte Paper-Heavyweight (A4)	S041256 S041258 S041259
EPSON Matte Paper-Heavyweight (Letter)	S041257

**Note:**

*The availability of special media varies by location.*





**EPSON®**