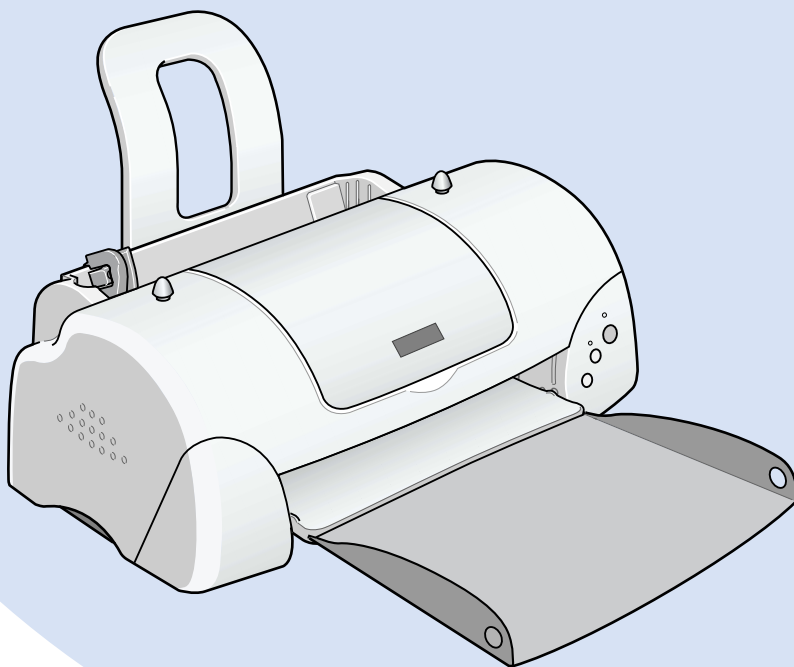


# EPSON STYLUS™ COLOR 680



## *Daily Use Guide*

**EPSON®**

# EPSON STYLUS™ COLOR 680

## Daily Use

<b><i>Where to Find Information</i></b> . . . . .	<b>2</b>
<b><i>Safety Instructions</i></b> . . . . .	<b>3</b>
Important Safety Instructions . . . . .	3
A Few Precautions . . . . .	4
For United Kingdom Users . . . . .	7
Warnings, Cautions, and Notes . . . . .	8
<b><i>Loading Special Paper, Envelopes, and Other Media</i></b> . . . . .	<b>8</b>
Loading Envelopes . . . . .	9
<b><i>Printing with Windows</i></b> . . . . .	<b>9</b>
Accessing the printer software . . . . .	9
Making Changes to Printer Settings . . . . .	10
Previewing your printout . . . . .	12
<b><i>Printing with Macintosh</i></b> . . . . .	<b>12</b>
Printer Software Introduction . . . . .	12
Making Changes to Printer Settings . . . . .	12
Previewing your printout . . . . .	13
<b><i>Replacing Ink Cartridges</i></b> . . . . .	<b>13</b>
Using the printer's control panel . . . . .	13
<b><i>Maintenance</i></b> . . . . .	<b>14</b>
Checking the Print Head Nozzles . . . . .	14
Cleaning the Print Head . . . . .	15
Aligning the Print Head . . . . .	16
Correcting USB Problems . . . . .	17
<b><i>Options and Consumable Products</i></b> . . . . .	<b>20</b>
Options and Consumable Products . . . . .	20

# Where to Find Information

## Setup Guide

This guide will help you set up and begin using your printer. It includes information on setting up your printer and installing the printer software.

## Daily Use guide

This guide provides information on normal printer operation. It also contains troubleshooting tips and customer support information.

## Reference Guide included on the CD-ROM

The Reference Guide contained on the CD-ROM included with your printer provides detailed information about printer software settings, printing on special paper, maintenance, and problem solving.

All rights reserved. No part of this publication may be reproduced, stored in a retrieval system, or transmitted in any form or by any means, electronic, mechanical, photocopying, recording, or otherwise, without the prior written permission of SEIKO EPSON CORPORATION. The information contained herein is designed only for use with this EPSON printer. EPSON is not responsible for any use of this information as applied to other printers.

Neither SEIKO EPSON CORPORATION nor its affiliates shall be liable to the purchaser of this product or third parties for damages, losses, costs, or expenses incurred by the purchaser or third parties as a result of: accident, misuse, or abuse of this product or unauthorized modifications, repairs, or alterations to this product, or (excluding the U.S.) failure to strictly comply with SEIKO EPSON CORPORATION's operating and maintenance instructions.

SEIKO EPSON CORPORATION shall not be liable for any damages or problems arising from the use of any options or any consumable products other than those designated as Original EPSON Products or EPSON Approved Products by SEIKO EPSON CORPORATION.

SEIKO EPSON CORPORATION shall not be held liable for any damage resulting from electromagnetic interference that occurs from the use of any interface cables other than those designated as EPSON Approved Products by SEIKO EPSON CORPORATION.

EPSON is a registered trademark and EPSON Stylus is a trademark of SEIKO EPSON CORPORATION.

Microsoft and Windows are registered trademarks of Microsoft Corporation.

*General Notice: Other product names used herein are for identification purposes only and may be trademarks of their respective owners. EPSON disclaims any and all rights in those marks.*

Copyright © 2000 by SEIKO EPSON CORPORATION, Nagano, Japan.



**Printed on Recycled Paper.**

# Safety Instructions

---

## Important Safety Instructions

Read all of these instructions before using your printer. Also, be sure to follow all warnings and instructions marked on the printer.

- Do not block or cover the openings in the printer's case. Do not insert objects through the slots.
- Take care not to spill liquid on the printer.
- Use only the type of power source indicated on the printer's label.
- Connect all equipment to properly grounded power outlets. Avoid using outlets on the same circuit as photocopiers or air control systems that regularly switch on and off.
- Avoid electrical outlets controlled by wall switches or automatic timers.
- Keep the entire computer system away from potential sources of electromagnetic interference, such as loudspeakers or the base units of cordless telephones.
- Do not use a damaged or frayed power cord.
- If you use an extension cord with the printer, make sure that the total ampere rating of the devices plugged into the extension cord does not exceed the cord's ampere rating. Also, make sure that the total ampere rating of all devices plugged into the wall outlet does not exceed the wall outlet's ampere rating.
- Do not attempt to service the printer yourself.
- Unplug the printer and refer servicing to qualified service personnel under the following conditions:

The power cord or plug is damaged; liquid has entered the printer; the printer has been dropped or the case damaged; the printer does not operate normally or exhibits a distinct change in performance.

- ❑ If you plan to use the printer in Germany, the building installation must be protected by a 10 or 16 amp circuit breaker to provide adequate short-circuit protection and over-current protection for this printer.


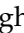

---

## ***A Few Precautions***

Take note of the following when using the printer, handling the ink cartridges, or choosing a location for the printer.

### ***When using the printer***

Observe the following:

- ❑ Do not put your hand inside the printer or touch the ink cartridges during printing.
- ❑ Do not move the print head by hand; otherwise, you may damage the printer.
- ❑ Remove your printouts from the output tray shortly after printing ; otherwise, the output tray may wrap.
- ❑ Always turn the printer off using the  power button. When this button is pressed, the  power light flashes briefly and then goes out. Do not unplug the printer or turn off the power to the outlet until the  power light stops flashing.
- ❑ Before transporting the printer, make sure that the print head is in the home (far right) position and the ink cartridges are in place.

## ***When handling the ink cartridges***

Observe the following:

- ❑ Keep ink cartridges out of the reach of children. Do not allow children to drink from or otherwise handle the cartridges.
- ❑ Be careful when you handle the used ink cartridges, as there may be some ink remaining around the ink supply port. If ink gets on your skin, wash the area thoroughly with soap and water. If discomfort or vision problems remain after a thorough flushing, see a doctor immediately.
- ❑ Do not shake an ink cartridge; this can cause leakage.
- ❑ Install the ink cartridge immediately after you remove it from its package. Leaving the cartridge unpacked for a long time before use may result in reduced print quality.
- ❑ Do not use an ink cartridge beyond the date printed on the cartridge carton. For best results, use up the ink cartridges within six months of installing them.
- ❑ Do not dismantle the ink cartridges or try to refill them. This could damage the print head.
- ❑ After bringing an ink cartridge inside from a cold storage site, allow it to warm up at room temperature for at least three hours before using it.
- ❑ Store ink cartridges in a cool, dark place.
- ❑ Do not touch the green IC chip on the side of the cartridge. This may affect normal operation and printing.
- ❑ In this ink cartridge, the IC chip retains a variety of cartridge related-information, such as the amount of ink remaining, so that a cartridge may be removed and reinserted freely. However, each time the cartridge is inserted, some ink is consumed because the printer automatically performs a reliability check.

- ❑ If you remove an ink cartridge for later use, protect the ink supply area from dirt and dust and store it in the same environment as the printer. Note that there is a valve in the ink supply port, making covers or plugs unnecessary, but care is needed to prevent the ink from staining items that the cartridge touches. Do not touch the ink cartridge ink supply port or surrounding area.

## ***When choosing a place for the printer***

Observe the following:

- ❑ Place the printer on a flat, stable surface that extends beyond the printer base in all directions. The printer will not operate properly if it is tilted or at an angle.
- ❑ Leave enough space in front of the printer for paper to be fully ejected.
- ❑ Avoid places subject to rapid changes in temperature and humidity. Also, keep the printer away from direct sunlight, strong light, or heat sources.
- ❑ Avoid places subject to shocks and vibrations.
- ❑ Avoid places subject to dust.
- ❑ Leave enough room around the printer to allow for sufficient ventilation.
- ❑ Place the printer near a wall outlet where the plug can be easily unplugged.

## For United Kingdom Users

### Use of options

EPSON (UK) Limited shall not be liable against any damages or problems arising from the use of any options or consumable products other than those designated as Original EPSON Products or EPSON Approved Products by EPSON (UK) Limited.

### Safety information



**Warning:**

*This appliance must be earthed. Refer to the rating plate for voltage and check that the appliance voltage corresponds to the supply voltage.*

**Important:**

The wires in the mains lead fitted to this appliance are coloured in accordance with the following code:

Green and yellow — Earth  
 Blue — Neutral  
 Brown — Live

Green and yellow	Earth
Blue	Neutral
Brown	Live

**If you have to fit a plug:**

As the colours of the mains lead of this appliance may not match the coloured markings used to identify the terminals in a plug, please proceed as follows:

The green and yellow wire must be connected to the terminal in the plug which is marked with the letter E or the earth symbol ( $\perp$ ).

The blue wire must be connected to the terminal in the plug marked with the letter N.

The brown wire must be connected to the terminal in the plug marked with the letter L.

If damage occurs to the plug, replace the cord set or consult a qualified electrician.

Replace fuses only with a fuse of the correct size and rating.

---

## **Warnings, Cautions, and Notes**



### **Warnings**

*must be followed carefully to avoid bodily injury.*



### **Cautions**

*must be observed to avoid damage to your equipment.*

### **Notes**

*contain important information and useful tips on the operation of your printer.*

## **Loading Special Paper, Envelopes, and Other Media**

You can print on a wide variety of special media, including ink jet paper, photo quality glossy film, photo paper, transparencies, index cards, and adhesive sheets.

When loading special media distributed by EPSON, read the instruction sheets packed with the media first. For more details on using special media, see “Paper Handling” in the online *Reference Guide*.

---

## Loading Envelopes

When printing on envelopes, please note the following:

- You can load up to 10 envelopes at a time in the sheet feeder.

**Note:**

*The folding quality and thickness of envelopes varies widely. If the total thickness of the stack of envelopes exceeds 10 mm, press each envelope in the stack flat before loading. If print quality declines when a stack of envelopes is loaded, load one envelope at a time.*

- Load envelopes flap edge first with the flap side down.
- Do not use envelopes that are curled or folded. Flatten the envelope flaps before loading. Avoid using envelopes that are too thin as they may curl during printing.
- Select Plain Paper as the Media Type setting in the printer driver.

## Printing with Windows

The printer software which comes with your printer includes a printer driver and printer utilities. The printer driver lets you choose from a wide variety of settings to get the best results from your printer. The printer utilities help you check the printer and keep it in top operating condition.

---

## Accessing the printer software

### From Windows applications

For accessing the printer software, click Print or Print Setup from the File menu. In the dialog box that appears, click Printer, Setup, Options, or Properties. (Depending on your application, you may need to click a combination of these buttons.) The printer driver opens.

When you access the printer software from a Windows application, the settings that you make apply only to the application you are using.

### ***From the Start menu (Windows 98, 95, 2000, and NT 4.0)***

For accessing the printer software, click Start, point to Settings, then click Printers. For Windows 98 and 95 users, select your printer, then click Properties on the File menu. For Windows 2000 users, select your printer, then click Printing Preferences on the File menu. For Windows NT 4.0 users, select your printer, then click Document Defaults on the File menu. The printer driver opens.

When you access the printer software from the Start menu, the settings that you make apply to all of your Windows applications.

### ***From the Control Panel (Windows 3.1)***

For accessing the printer software, double-click the Control Panel icon in the Main program group and double-click the Printer icon. Select your printer in the Installed Printer list and click Setup. The printer driver opens.

---

## ***Making Changes to Printer Settings***

The printer driver features the following menus and settings.

Main:       Media Type, Ink, Mode, Print Preview

Paper:       Paper Size, Copies, Orientation, Printable Area

Layout:     Reduce/Enlarge, Multi-Page, Watermark

#### ***Note:***

*The Layout menu is available for Windows 98, 95, 2000, and NT 4.0 users.*

The Mode settings on the Main menu are arranged to give you three levels of control over the printer driver.

<b>Automatic</b>	When this mode is selected, the printer driver takes care of all detailed settings based on the current Media Type and Ink settings. To make the Ink setting, click Color to print in color, or Black to print in black-and-white or grayscale. Depending on the media selected in the Media Type list (while Automatic is selected), a slider appears under the Custom radio button that lets you choose from Quality or Speed settings. Select Quality when print quality is more important than speed.
<b>PhotoEnhance</b>	This mode provides a variety of image-correction settings that you can apply to your photos before printing. PhotoEnhance does not affect your original data. This mode is only available when printing 16-, 24-, or 32-bit color data.
<b>Custom</b>	This mode offers ready-made settings designed for printing text and graphs and for applying a color-matching method. You can also create and save your own custom settings using the Advanced settings.

In addition to making comprehensive Mode settings that affect overall print quality, you can also modify individual aspects of your printout using the Paper and Layout menus. For more information about the Paper and Layout menus, see your online *Reference Guide*.

## ***Making the Media Type setting***

The Media Type setting determines what other settings are available, so you should always make this setting first. On the Main menu, select the Media Type setting that matches the media that is loaded in the printer.

---

## ***Previewing your printout***

Select the Print Preview check box on the Main menu when you wish to view a preview of your document before printing.

## ***Printing with Macintosh***

---

### ***Printer Software Introduction***

The printer software which comes with your printer includes a printer driver and printer utilities. The printer driver lets you choose from a wide variety of settings to get the best results from your printer. The printer utilities help you check the printer and keep it in top condition.

---

### ***Making Changes to Printer Settings***

You will find the printer driver settings in the following dialog boxes.

- Print dialog box (click Print on the File menu of your application or click Options in the Page Setup dialog box)
- Page Setup dialog box (click Page Setup on the File menu of your application)
- The Mode settings in the Print dialog box are arranged to give you four levels of control over the printer driver.

In addition to making comprehensive Mode settings that affect overall print quality, you can also modify individual aspects of your printout using the settings contained in the Page Setup and the Layout dialog boxes.


## Making the Media Type setting

The Media Type setting determines what other settings are available, so you should always make this setting first.

In the Print dialog box, select the Media Type setting that matches the paper you loaded in the printer.

---

## Previewing your printout

Click the  Preview icon button in the Print dialog box. The Print button changes into a Preview button.

## Replacing Ink Cartridges

---

### Using the printer's control panel

The printer's indicator lights will inform you when it is time to obtain a replacement ink cartridge and when it is time to replace an empty cartridge. You can also check ink levels and start the ink cartridge replacement procedure from your computer using the How to button in the Status Monitor's Print Status window.



**Caution:**

- EPSON recommends the use of genuine EPSON ink cartridges. Other products not manufactured by EPSON may cause damage to your printer not covered by EPSON's warranties.*
- Leave the old cartridge installed in the printer until you have obtained a replacement; otherwise, ink remaining in the print head nozzles may dry out.*
- Do not refill the ink cartridges. The printer calculates the amount of ink remaining using an IC chip on the ink cartridge. Even if the cartridge is refilled, the amount of ink remaining will not be recalculated by the IC chip and the amount of ink available for use will not change.*

**Note:**

- ❑ *You cannot continue printing with one ink cartridge empty, even if the other cartridge still contains ink. Before printing, replace the empty cartridge.*
- ❑ *In addition to the ink used during document printing, ink is consumed during the print head cleaning operation and during the self-cleaning cycle which is performed when the printer is turned on, and during ink charging when the ink cartridge is installed in the printer.*

## **Maintenance**

---

### **Checking the Print Head Nozzles**

If you find that the printed image is unexpectedly faint or dots in the printed image are missing, you may be able to identify the problem by checking the print head nozzles.

You can check the print head nozzles from your computer using the Nozzle Check utility in the printer software, or from the printer itself by using the printer's control panel buttons.

### **Using the Nozzle Check utility**

**Note:**

*Do not use the Nozzle Check utility while printing is in progress; otherwise, your printout may be marred.*

#### **For Windows users**

Click the Utility tab in the printer software, then click the Nozzle Check button.

#### **For Macintosh users**

Access the Print or Page Setup dialog box and click the  Utility icon button, then click the Nozzle Check button in the Utility dialog box.

---

## **Cleaning the Print Head**

If you find that the printed image is unexpectedly faint or dots in the printed image are missing, you may be able to solve these problems by cleaning the print head, which ensures that the nozzles are delivering ink properly.

You can clean the print head from your computer using the Head Cleaning utility in the printer software, or from the printer itself by using the printer's control panel buttons.

**Note:**

- Print head cleaning uses both color and black ink. To avoid wasting ink, clean the print head only if print quality declines; for example, if the printout is blurry or the color is incorrect or missing.*
- Use the Nozzle Check utility first to confirm that the print head needs to be cleaned. This saves ink.*
- Do not start the Head Cleaning or Nozzle Check utility while printing is in progress; otherwise, your printout may be marred.*

## **Using the Head Cleaning utility**


**Note:**

*If the error light is flashing, you can not clean the print head. Replace the appropriate ink cartridge first.*

### **For Windows users**

Click the Utility tab in the printer software, then click the Head Cleaning button.

### **For Macintosh users**

Access the printer software and click the  Utility icon button in the Print or Page Setup dialog box, then click the Head Cleaning button.

---

## ***Aligning the Print Head***

If you notice a misalignment of vertical lines, you may be able to solve this problem from your computer using the Print Head Alignment utility in your printer software. Refer to the appropriate section below.


***Note:***

*Do not start the Print Head Alignment utility while printing is in progress; otherwise, your printout may be marred.*

### ***For Windows users***

Click the Utility tab in the printer software, then click the Print Head Alignment button.

### ***For Macintosh users***

Access the printer software and click the  Utility icon button in the Print or Page Setup dialog box, then click the Print Head Alignment button.

---

## **Correcting USB Problems**

If you are having difficulty using your printer with a USB connection, read the information in this section.

### ***Make sure that your computer is a Windows 98 or Windows 2000 pre-installed model***

Your computer must be a Windows 98 or Windows 2000 pre-installed model. You may not be able to install or run the USB Printer Driver on a computer which was not originally equipped with a USB port or which has been upgraded from Windows 95 to Windows 98 or 2000.

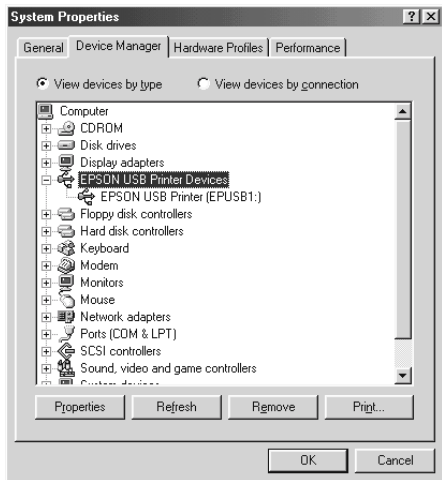
### ***Make sure that EPSON USB Printer Devices appears on the Device Manager menu (for Windows 98 only)***

If you canceled the plug-and-play driver installation before the procedure was complete, either the USB printer device driver or the printer driver may be incorrectly installed.

Follow the steps below to check the installation and reinstall the drivers.

1. Turn the printer on. Plug the USB cable into the printer and the computer.
2. Right-click the My Computer icon on your desktop, then click Properties.
3. Click the Device Manager tab.

If your drivers are correctly installed, EPSON USB Printer Devices should appear on the Device Manager menu.



If EPSON USB Printer Devices does not appear on the Device Manager menu, click the plus (+) sign beside Other devices to view the installed devices.



If USB Printer appears under Other devices, the USB printer device driver is not installed correctly. If EPSON Stylus COLOR 680 appears, the printer driver is not installed correctly.

If neither USB Printer nor EPSON Stylus COLOR 680 appears under Other devices, click Refresh or unplug the USB cable from the printer, then plug it into the printer again.

4. Under Other devices, select USB Printer or EPSON Stylus COLOR 680, and click Remove. Then, click OK.

5. When the following dialog box appears, click OK. Then click OK to close the System Properties dialog box.



6. Turn off the printer and restart your PC. Then, reinstall the drivers from the beginning, following the instructions in the *Setup Guide*.

## ***Printer does not work correctly with the USB cable***

If your printer does not work correctly with the USB cable, try one or more of these solutions:

- Use the USB cable recommended.
- If you use a USB hub, connect the printer to the first tier of the hub, or connect the printer directly to the computer's USB port.
- For Windows 98, try reinstalling the USB printer device driver and the printer software. First, uninstall EPSON Printer Software using the Add/Remove Programs utility in the Control Panel, then uninstall EPSON USB Printer Devices. Next, reinstall the software as described in *Setup Guide*. If EPSON USB Printer Devices is not registered in the Add/Remove Programs list, access the CD-ROM and double-click epusbun.exe. in Win9x folder. Then follow the on-screen instructions.

# Options and Consumable Products

---

## Options and Consumable Products

The following options and consumable products are available for your printer.

### Options

You can use any interface cables that meet these specifications. See your computer manual for any additional requirements.

- Parallel Interface Cable (shielded) from D-SUB 25-pin (computer) to 36-pin Amphenol 57 Series (printer)
- USB Interface Cable (shielded) from Series A4-pin (computer) to series B 4-pin (printer).



**Caution:**

*Use only interface cables which meet the specifications listed above.*

### Consumable products

The following ink cartridges and EPSON special media are available for your printer.

#### Ink cartridges

You can use the following cartridges with your printer.

Black ink cartridge	T017
Color ink cartridge	T018

**Note:**

*The product numbers of ink cartridges may vary by location.*

## Media types

EPSON offers specially-designed media for ink jet printers to meet most high-quality printing needs.

EPSON Premium Ink Jet Plain Paper (A4) S041214

360 dpi Ink Jet Paper

EPSON 360 dpi Ink Jet Paper (A4) S041059  
S041025

EPSON 360 dpi Ink Jet Paper (Letter) S041060  
S041028

EPSON Iron-On Cool Peel Transfer Paper (A4) S041154

EPSON Iron-On Cool Peel Transfer Paper (Letter) S041153  
S041155

Photo Quality Ink Jet Paper

EPSON Photo Quality Ink Jet Paper (A4) S041061  
S041026

EPSON Photo Quality Ink Jet Paper (Letter) S041062  
S041029

EPSON Photo Quality Ink Jet Paper (Legal) S041067  
S041048

EPSON Photo Quality Ink Jet Cards (A6) S041054

EPSON Photo Quality Ink Jet Cards (5 × 8") S041121

EPSON Photo Quality Ink Jet Cards (8 × 10") S041122

EPSON Photo Quality Self Adhesive Sheets (A4) S041106

EPSON Ink Jet Note Cards A6 (with envelopes) S041147

EPSON Ink Jet Greeting Cards 5 × 8"  
(with envelopes) S041148

EPSON Ink Jet Greeting Cards 8 × 10"  
(with envelopes) S041149

## Matte Paper-Heavyweight

EPSON Matte Paper-Heavyweight (A4)	S041256
	S041258
	S041259

EPSON Matte Paper-Heavyweight (Letter)	S041257
--	---------

## Photo Paper

EPSON Photo Paper (A4)	S041140
------------------------	---------

EPSON Photo Paper (Letter)	S041141
----------------------------	---------

EPSON Photo Paper (4 × 6")	S041134
----------------------------	---------

EPSON Photo Paper (100 × 150 mm)	S041255
----------------------------------	---------

EPSON Photo Paper (200 × 300 mm)	S041254
----------------------------------	---------

EPSON Panoramic Photo Paper (210 × 594 mm)	S041145
--	---------

EPSON Photo Paper Cards (A4)	S041177
------------------------------	---------

## Photo Quality Glossy Film

EPSON Photo Quality Glossy Film (A4)	S041071
--------------------------------------	---------

EPSON Photo Quality Glossy Film (Letter)	S041072
--	---------

EPSON Photo Quality Glossy Film (A6)	S041107
--------------------------------------	---------

EPSON Photo Stickers 16 (A6)	S041144
------------------------------	---------

EPSON Photo Stickers 4 (A6)	S041176
-----------------------------	---------

## Ink Jet Transparencies

EPSON Ink Jet Transparencies (A4)	S041063
-----------------------------------	---------

EPSON Ink Jet Transparencies (Letter)	S041064
---------------------------------------	---------

Premium Glossy Photo Paper

EPSON Premium Glossy Photo Paper (A4) S041287

S041297

EPSON Premium Glossy Photo Paper (Letter) S041286

**Note:**

*The availability of special media varies by location.*



The EPSON logo is displayed in a bold, blue, sans-serif font. It is positioned within a blue circular arc that is partially visible at the bottom right of the page. A registered trademark symbol (®) is located to the upper right of the word "EPSON".

**EPSON®**